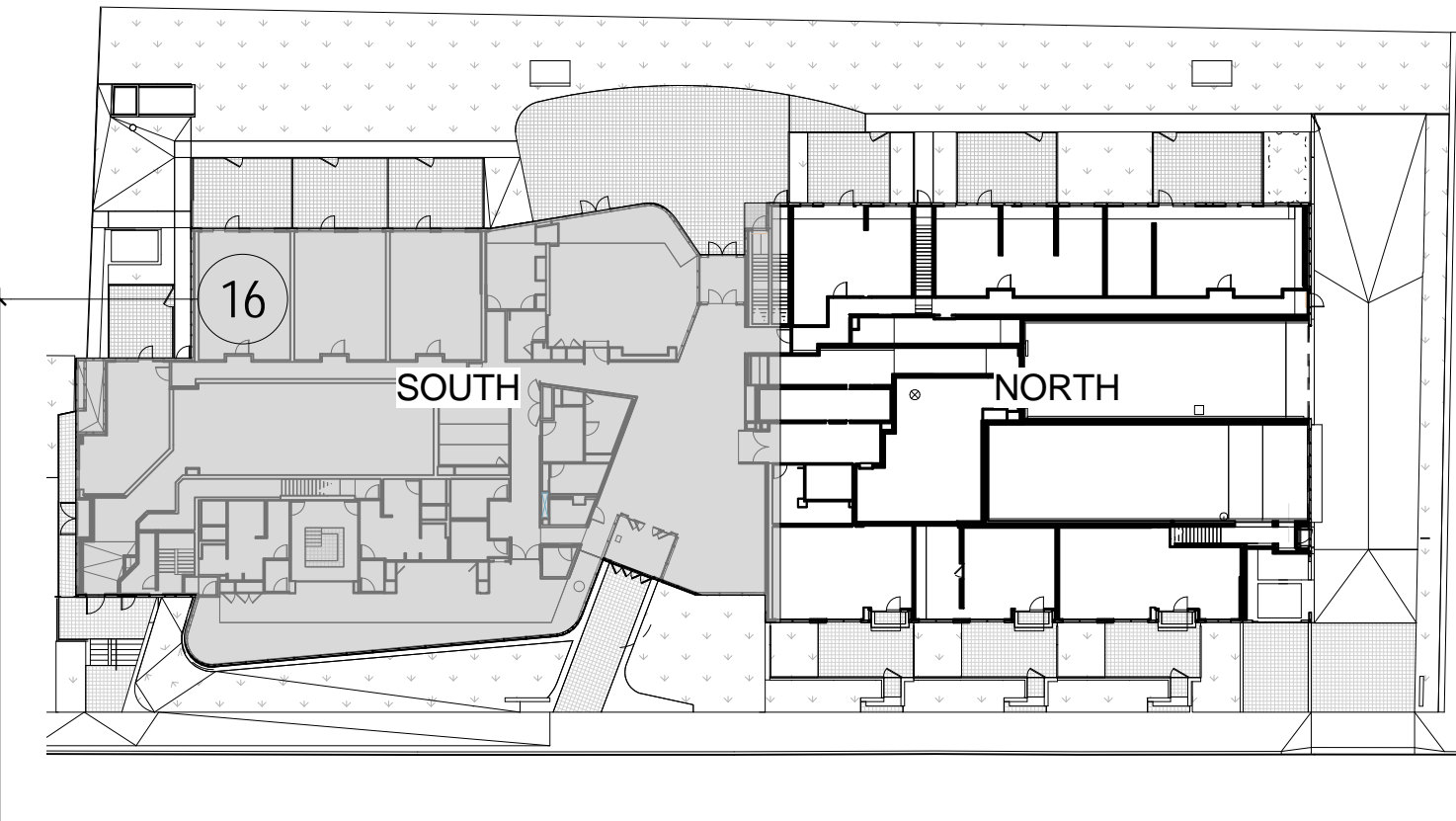


CEILING NOTES

1. TYPICAL GYPSUM BULKHEAD W/ ACUSTIC INSULATION.
2. CEILING TYPE C1 W/ ACUSTIC INSULATION AT BATHROOMS AND LAUNDRY CLOSETS TYP.
3. KITCHEN BULKHEAD @ 2450mm AFF TYP U.N.O.
4. ALL PLUMBING PENETRATING SLAB ABOVE TO BE WRAPPED W/ 38mm ACUSTIC BATT EXCEPT IN BATHROOM CEILINGS.
5. PARTITIONS AROUND C1 CEILINGS TO BE FILLED W/ ACUSTIC BATT ABOVE THE CEILING. EXTEND GYPSUM TO USL SLAB ABOVE ON ONE SIDE OF PARTITION MIN.
6. WHERE PLUMBING FROM ABOVE IS LOCATED OVER A ROOM BELOW OTHER THAN A BATHROOM, PROVIDE AN INSULATED C1 CEILING, PLUS WRAP THE PLUMBING IN ACUSTIC BATT.



SO
SPADINA QUEEN
TRIDEL

METRIC SCALE DRAWING
FIRST FLOOR ELEV. +93.60m

No. ISSUED/REVISIONS FOR DATE:

1	Issued for SPA	2013-03-28
2	Issued for Coordination	2013-04-11
3	Issued for Coordination	2013-04-11
4	Revised for SPA	2014-01-10
5	Issued for Coordination	2014-02-28
6	Issued for Elevator Tender	2014-04-07
7	Issued for Coordination	2014-04-07
8	Issued for 10% Completion	2014-05-21
9	Issued for Permit	2014-05-28
10	Issued for Coordination	2014-06-23
11	Revised for Permit	2014-07-01
12	Revised for Permit	2014-08-22
13	Issued for Tender	2014-08-28
14	Issued for Tender	2014-08-28
15	Revised for SPA	2014-10-21
16	Issued for Tender	2014-10-21
17	Issued for Tender	2015-01-29
18	Issued for 40% DCI	2015-04-24
19	Issued for Coordination	2015-04-24
20	Issued for Tender	2015-05-05
21	Issued for 40% DCI	2015-05-05
22	Issued for 40% DCI	2015-07-11
23	Issued for 40% DCI	2015-07-14

SQ ALEXANDRA PARK - BLOCK 11
38 CAMERON ST. TORONTO, ONTARIO M5T 2H2

project no. 12-1115
scale: As indicated
drawn by: TA
reviewed by: HA
date: 2014-09-22

Tepple Architects
LEVEL 1 PLAN SOUTH
1:50