

**WALL ASSEMBLIES**

<p><b>(W1A) 240 mm WINDOW WALL - METAL SPANDREL PANEL</b></p> <p>R - 20.8 NOMINAL VALUE R - 8.0 EFFECTIVE VALUE</p>	<p><b>(W1B) 240 mm WINDOW WALL - 1 HOUR FRR</b></p> <p>1 HOUR FRR ULC W-507 R - 18.4 NOMINAL VALUE R - 7.1 EFFECTIVE VALUE</p>	<p><b>(W1C) 275 mm WINDOW WALL - METAL SPANDREL PANEL ON CONC. STRUCTURE</b></p> <p>R - 29.9 NOMINAL VALUE R - 11.6 EFFECTIVE VALUE</p>	<p><b>(W1D) 240 mm WINDOW WALL - METAL SPANDREL PANEL WITH LOUVERS</b></p> <p>R - 20.8 NOMINAL VALUE R - 8.0 EFFECTIVE VALUE</p>	<p><b>(W1E) 240 mm WINDOW WALL - METAL SPANDREL PANEL AT SHADOW BOX</b></p> <p>R - 21.4 NOMINAL VALUE R - 8.0 EFFECTIVE VALUE</p>	<p><b>(W1F) 225 mm WINDOW WALL - METAL SPANDREL PANEL PARAPET</b></p> <p>R - 21.4 NOMINAL VALUE R - 8.0 EFFECTIVE VALUE</p>	<p><b>(W1G) 191 mm STICK BUILT CAPPED CURTAIN WALL SYSTEM</b></p> <p>R - ## NOMINAL VALUE R - ## EFFECTIVE VALUE</p>
<p><b>(W2A) 62 mm CHANNEL PROFILE GLAZING SYSTEM</b></p> <p>R - ## NOMINAL VALUE R - ## EFFECTIVE VALUE</p>	<p><b>(W2B) SHADOW BOX GLAZING SYSTEM WITH INSULATION ON CONCRETE STRUCTURE</b></p> <p>R - 25 NOMINAL VALUE R - 11.6 EFFECTIVE VALUE</p>	<p><b>(W2C) 62 mm CHANNEL PROFILE GLAZING SYSTEM ON GALV. STEEL METAL FRAMING</b></p> <p>R - 20.0 NOMINAL VALUE R - 7.7 EFFECTIVE VALUE</p>	<p><b>(W2D) 157 mm METAL PANEL ON CONC. STRUCTURE</b></p> <p>R - 20.0 NOMINAL VALUE R - 7.7 EFFECTIVE VALUE</p>	<p><b>(W2E) 180 mm METAL SPANDREL PANEL AT BALCONY</b></p> <p>R - 20 NOMINAL VALUE R - 7.7 EFFECTIVE VALUE</p>	<p><b>(W2F) NON-COMBUSTIBLE EIFS RAINSCREEN ON CONC. STRUCTURE/CONC. BLOCK</b></p> <p>R - 20 NOMINAL VALUE R - 7.7 EFFECTIVE VALUE</p>	<p><b>(W2G) NON-COMBUSTIBLE EIFS RAINSCREEN ON CONC. STRUCTURE/CONC. BLOCK</b></p> <p>R - 35 NOMINAL VALUE R - 13.6 EFFECTIVE VALUE</p>
<p><b>(W3) ARCHITECTURAL CONCRETE</b></p> <p>REFER TO SPECIFICATIONS</p>	<p><b>(W3B) STONE CLADDING ON CONCRETE STRUCTURE</b></p> <p>R - 7.5</p>	<p><b>(W3C) CONCRETE BLOCK ON CONCRETE STRUCTURE</b></p> <p>R - 7.5 TO 9.0</p>	<p><b>(W3D) INSULATION ON CONCRETE STRUCTURE OR BLOCK WALL</b></p> <p>R - 11.6</p>			

**ROOFS**

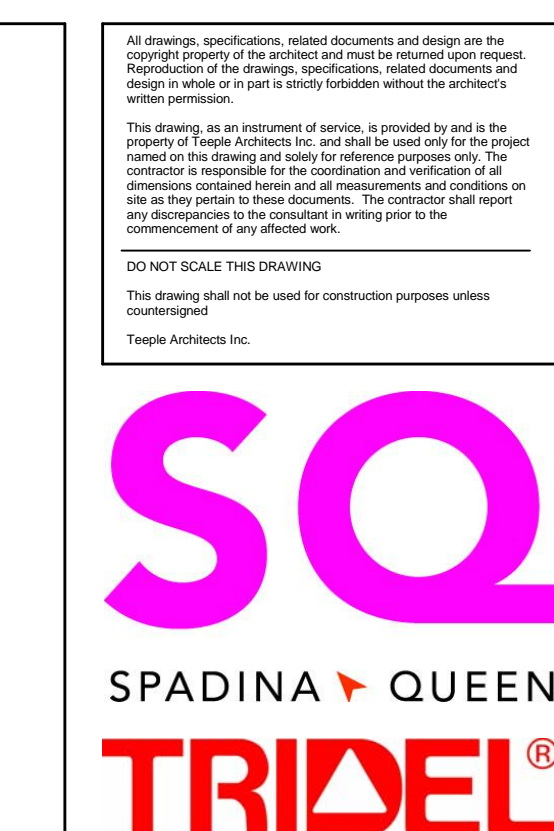
<p><b>(R1A) EXTENSIVE GREEN ROOF - STAIR J/R ROOF</b></p> <p>R - 30 MIN. NOMINAL VALUE</p>	<p><b>(R1B) GREEN ROOF - PENHOUSE LEVEL</b></p> <p>R - 30 MIN. NOMINAL VALUE</p>	<p><b>(R1C) GRAVEL BALLASTED INSULATED ROOF</b></p> <p>R - 30 MIN. NOMINAL VALUE</p>	<p><b>(R1D) CONCRETE PAVER BALLASTED INSULATED ROOF</b></p> <p>R - 30 MIN. NOMINAL VALUE</p>	<p><b>(R1E) PAVER ON TERRACE - LOW PROFILE</b></p> <p>R - 30 MIN. NOMINAL VALUE</p>	<p><b>(R1F) CONCRETE PAVER ON TERRACE - HIGH PROFILE</b></p> <p>R - 30 MIN. NOMINAL VALUE</p>	<p><b>(R1G) PAVER ON TERRACE - HEAT TRACED</b></p> <p>R - 30 MIN. NOMINAL VALUE</p>
<p><b>(R2) SLOPED CAST-IN-PLACE CONCRETE BALCONY</b></p> <p>R - 30 MIN. NOMINAL VALUE</p>	<p><b>(R2B) CONCRETE PAVING ON PARKING ROOF</b></p> <p>R - 30 MIN. NOMINAL VALUE</p>					

**SOFFITS**

<p><b>(S1) PREFINISHED SUSPENDED METAL SOFFIT SYSTEM</b></p> <p>R - 30 NOMINAL VALUE R - 11.6 EFFECTIVE VALUE</p>	<p><b>(S1A) PREFINISHED SUSPENDED METAL SOFFIT SYSTEM - COLD VENTILATED</b></p> <p>R - 20 NOMINAL VALUE</p>	<p><b>(S1B) PREFINISHED SUSPENDED METAL SOFFIT SYSTEM WITH HEATED PLENUM</b></p> <p>R - 20 NOMINAL VALUE</p>	<p><b>(S1C) PREFINISHED SUSPENDED METAL SOFFIT SYSTEM</b></p> <p>R - 20 NOMINAL VALUE</p>	<p><b>(S1D) HEATED SOFFIT WITH EIFS</b></p> <p>R - 25 NOMINAL VALUE</p>
-----------------------------------------------------------------------------------------------------------------------	-------------------------------------------------------------------------------------------------------------	--------------------------------------------------------------------------------------------------------------	-------------------------------------------------------------------------------------------	-------------------------------------------------------------------------

**FOUNDATION WALLS**

<p><b>(FW1) FOUNDATION WALL AGAINST ROW/CAISSON WALL SHORING SYSTEM</b></p> <p>NOTE: 1. ALL FORM TILE HOLES TO BE FILLED (REFER TO SPECIFICATIONS FOR DETAILS) 2. REFER TO SHORING DRAWINGS FOR ADDITIONAL INFORMATION AND DETAILS 3. REFER TO SOILS REPORT PREPARED BY GEOTECHNICAL ENGINEER</p> <p>NOTE: 1. ALL FORM TILE HOLES TO BE FILLED (REFER TO SPECIFICATIONS FOR DETAILS) 2. REFER TO SHORING DRAWINGS FOR ADDITIONAL INFORMATION AND DETAILS 3. REFER TO SOILS REPORT PREPARED BY SOIL CONSULTANT 4. AT LOWER LEVELS, WHERE SHALE OR OTHER HARD-STONE SUBSTRATE IS PRESENT, APPLY A LEVELING MEDIUM OVER THE SUBSTRATE TO EVEN OUT IRREGULARITIES, AS PER SOIL REPORT. COORDINATE LOCATION AND APPLICATION WITH GEOTECHNICAL ENGINEER</p>	<p><b>(FW2) FOUNDATION WALL AGAINST SHORING SYSTEM WITH TIMBER LAGGING</b></p> <p>NOTE: 1. ALL FORM TILE HOLES TO BE FILLED (REFER TO SPECIFICATIONS FOR DETAILS) 2. REFER TO SHORING DRAWINGS FOR ADDITIONAL INFORMATION AND DETAILS 3. REFER TO SOILS REPORT PREPARED BY GEOTECHNICAL ENGINEER</p> <p>NOTE: 1. ALL FORM TILE HOLES TO BE FILLED (REFER TO SPECIFICATIONS FOR DETAILS) 2. REFER TO SHORING DRAWINGS FOR ADDITIONAL INFORMATION AND DETAILS 3. REFER TO SOILS REPORT PREPARED BY GEOTECHNICAL ENGINEER</p>	<p><b>(FW3) FOUNDATION WALL WITH GRANULAR BACK FILL</b></p> <p>NOTE: 1. ALL FORM TILE HOLES TO BE FILLED (REFER TO SPECIFICATIONS FOR DETAILS) 2. REFER TO SHORING DRAWINGS FOR ADDITIONAL INFORMATION AND DETAILS 3. REFER TO SOILS REPORT PREPARED BY GEOTECHNICAL ENGINEER</p> <p>NOTE: 1. ALL FORM TILE HOLES TO BE FILLED (REFER TO SPECIFICATIONS FOR DETAILS) 2. REFER TO SHORING DRAWINGS FOR ADDITIONAL INFORMATION AND DETAILS 3. REFER TO SOILS REPORT PREPARED BY GEOTECHNICAL ENGINEER</p>
-----------------------------------------------------------------------------------------------------------------------------------------------------------------------------------------------------------------------------------------------------------------------------------------------------------------------------------------------------------------------------------------------------------------------------------------------------------------------------------------------------------------------------------------------------------------------------------------------------------------------------------------------------------------------------------------------------------------------------------------------------------------------------------	----------------------------------------------------------------------------------------------------------------------------------------------------------------------------------------------------------------------------------------------------------------------------------------------------------------------------------------------------------------------------------------------------------------------------------------------------------------------------------------------------------------------------------------------------	---------------------------------------------------------------------------------------------------------------------------------------------------------------------------------------------------------------------------------------------------------------------------------------------------------------------------------------------------------------------------------------------------------------------------------------------------------------------------------------------------------------------------------



METRIC SCALE DRAWING  
FIRST FLOOR ELEV. +93.60m

No.	ISSUED/REVISION FOR	DATE
1	Issued for Coordination	2014-05-02
2	Issued for O&A Completion	2014-05-23
3	Issued for Permit	2014-06-23
4	Issued for Permit	2014-06-23
5	Revised for Permit	2014-07-01
6	Revised for Permit	2014-08-22
7	Issued for Tender	2014-09-22
8	Issued for Tender	2014-09-22
9	Issued for Tender	2015-05-28
10	Issued for AS/G	2015-06-17
11	Issued for AS/G	2015-11-11
12	Issued for Final Tender	2015-06-19

project no: 12-115  
scale: As indicated  
drawn by: T4  
checked by: H4  
date: 2014-09-22