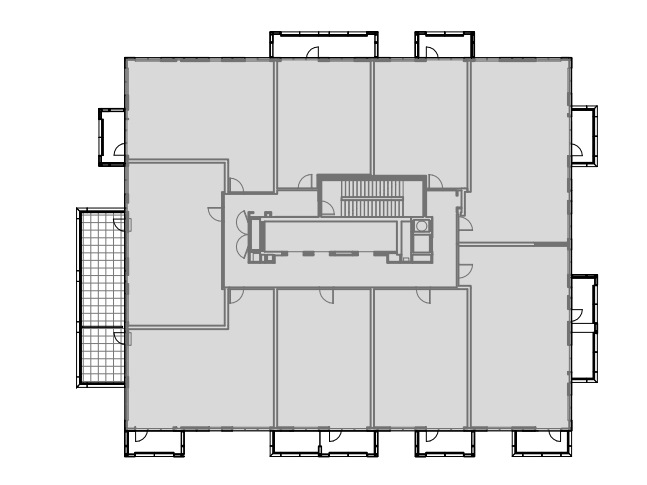


AS/4 NOTES:
CEILING & BULKHEADS REVISED WITH AS/4 REVISIONS NOT CLOUDED

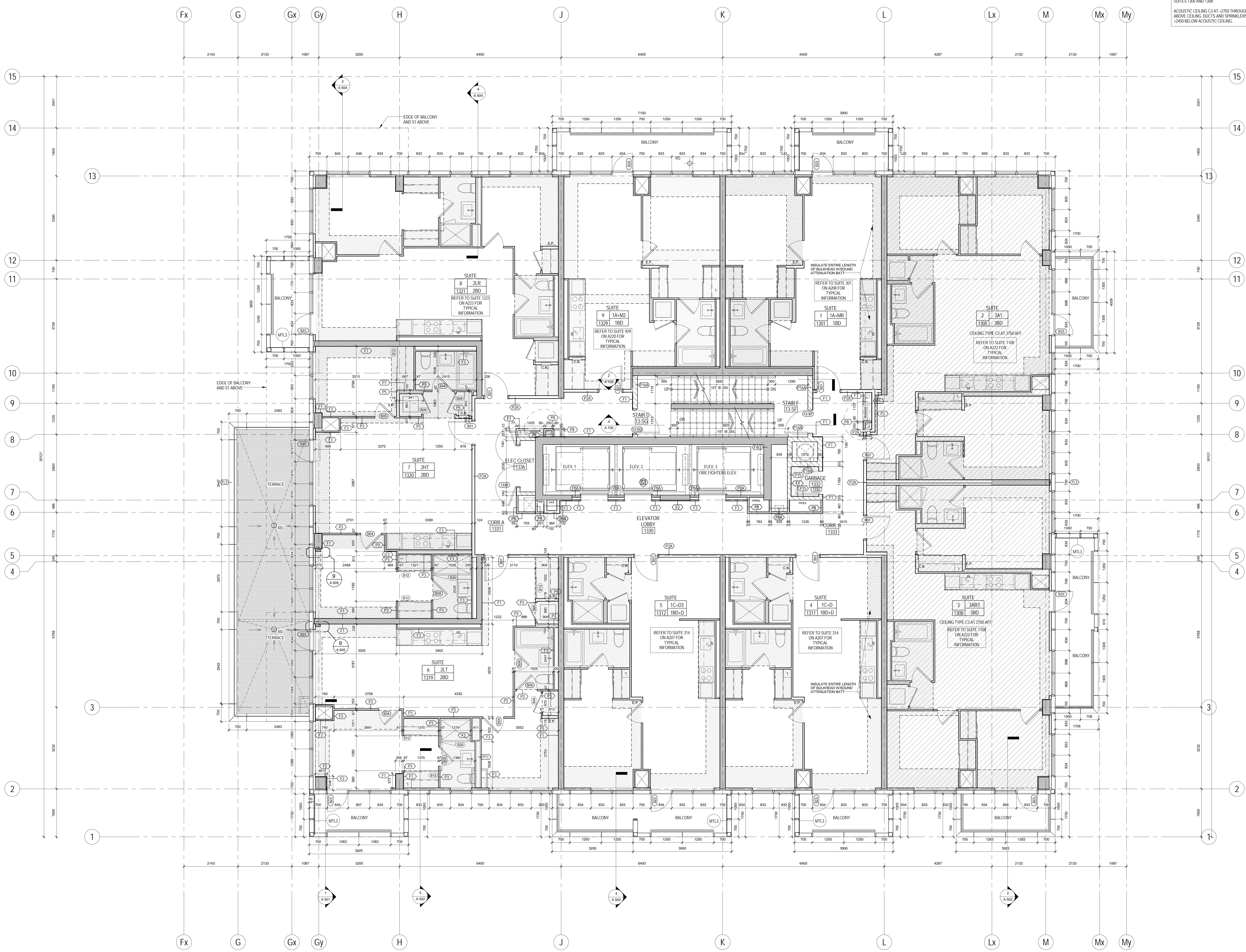
- CEILING NOTES:
1. TYPICAL GYPSUM BULKHEAD W/0 ACOUSTIC INSULATION
 2. CEILING TYPE C1 W/ ACOUSTIC INSULATION AT BATHROOMS AND LAUNDRY CLOSETS TYP.
 3. KITCHEN BULKHEAD @ 2450mm AFF TYP. U.N.O. (@ 2290mm AFF ON LEVELS 3 AND 4)
 4. ALL PLUMBING PENETRATING SLAB ABOVE TO BE WRAPPED W/ 38mm ACOUSTIC BATT EXCEPT IN BATHROOM CEILING.
 5. PARTITIONS AROUND C1 CEILING TO BE FILLED W/ ACOUSTIC BATT ABOVE THE CEILING. EXTEND GYPSUM TO US SLAB ABOVE ON ONE SIDE OF PARTITION MIN.
 6. WHERE PLUMBING FROM ABOVE IS LOCATED OVER A ROOM BELOW OTHER THAN A BATHROOM, PROVIDE AN INSULATED C1 CEILING, PLUS WRAP THE PLUMBING IN ACOUSTIC BATT.

PLAN DRAWING LEGEND:

- DENOTES PAINTED: CIA GYPSUM BULKHEAD AT 2750 AFF UNLESS NOTED
- DENOTES ACOUSTIC GYPSUM CEILING C3 CONTINUOUS ABOVE BULKHEADS & DROPPED CEILING. PAINTED FINISH AT EXPOSED LOCATIONS
- YELLOW METAL PANEL CLADDING
- EXTERIOR WALL ASSEMBLIES W/TA UNLESS NOTED OTHERWISE
- DENOTES BARRIER-FREE DESIGNATED RESIDENTIAL SUITE
- DENOTES ROOF DRAIN AND ROOF DRAINAGE LAYOUT. REFER ALSO TO SLAB EDGE PLANS FOR SLOPES AND SLAB ELEVATIONS
- REFER TO DWG. A420 FOR DETAILS OF WINDOW WASHING SYSTEMS
- ANCHOR POINT
- DAWIT BASE
- RECESSED DAWIT BASE
- RECESSED ROOF ANCHOR
- ROOF ANCHOR
- ROOF ANCHOR - WALL MOUNTED
- WINDOW WASHING RIGGING SLEEVE



SUITES 1306 AND 1308
ACOUSTIC CEILING C3 AT +2750 THROUGHOUT SUITE. ROUTE RWL ABOVE CEILING. DUCTS AND SPRINKLERS IN TYP. BULKHEADS AT +2450 BELOW ACOUSTIC CEILING.



PROJECT NO. 12-115
SCALE: As indicated
DRAWN BY: TAU
REVIEWED BY: SA
DATE: 2014-09-22



METRIC SCALE DRAWING
FIRST FLOOR ELEV. +93.60m

No.	ISSUED/REVISION FOR	DATE
1	Issued for SPA	2013-03-24
2	Issued for Coordination	2013-04-11
3	Issued for Coordination	2013-04-11
4	Revised for SPA	2014-01-10
5	Issued for Coordination	2014-02-20
6	Issued for Tender Tender	2014-04-07
7	Issued for Coordination	2014-04-23
8	Issued for 10% Completion	2014-05-21
9	Issued for Permit	2014-05-28
10	Issued for Coordination	2014-06-23
11	Revised for Permit	2014-07-10
12	Revised for Permit	2014-08-22
13	Issued for Tender	2014-08-28
14	Issued for Tender	2014-08-28
15	Issued for Flooring Tender	2015-03-30
16	Issued for Tender	2015-05-05
17	Issued for AS/4	2015-06-17
18	Issued for Crystal Tender	2015-08-19

SQ ALEXANDRA PARK - BLOCK 11
38 CAMERON ST., TORONTO, ONTARIO M5T 2H2

project no. 12-115
scale: As indicated
drawn by: TAU
reviewed by: SA
date: 2014-09-22

Teepie Architects
LEVEL 13 PLAN

1 LEVEL 13 PLAN
A 224 1:50

A 224