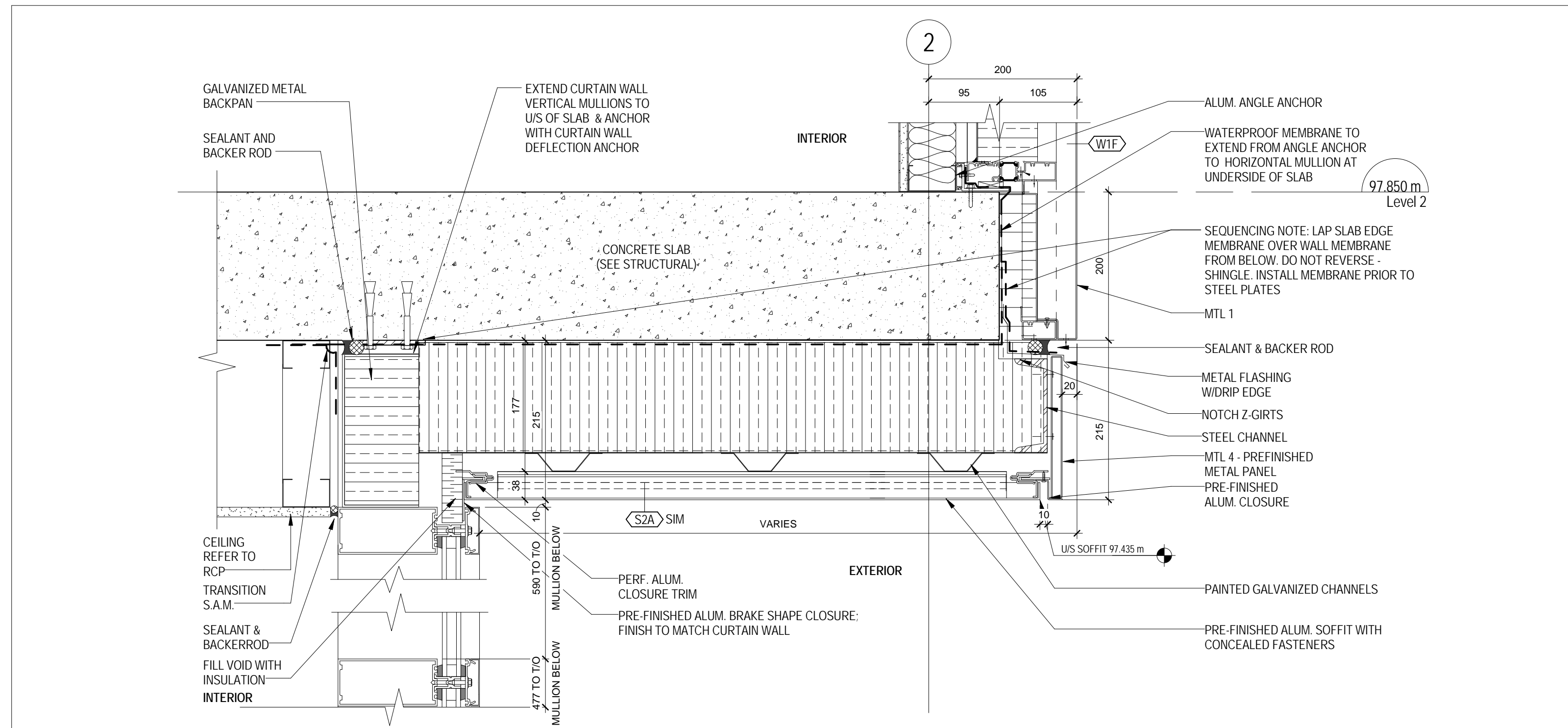
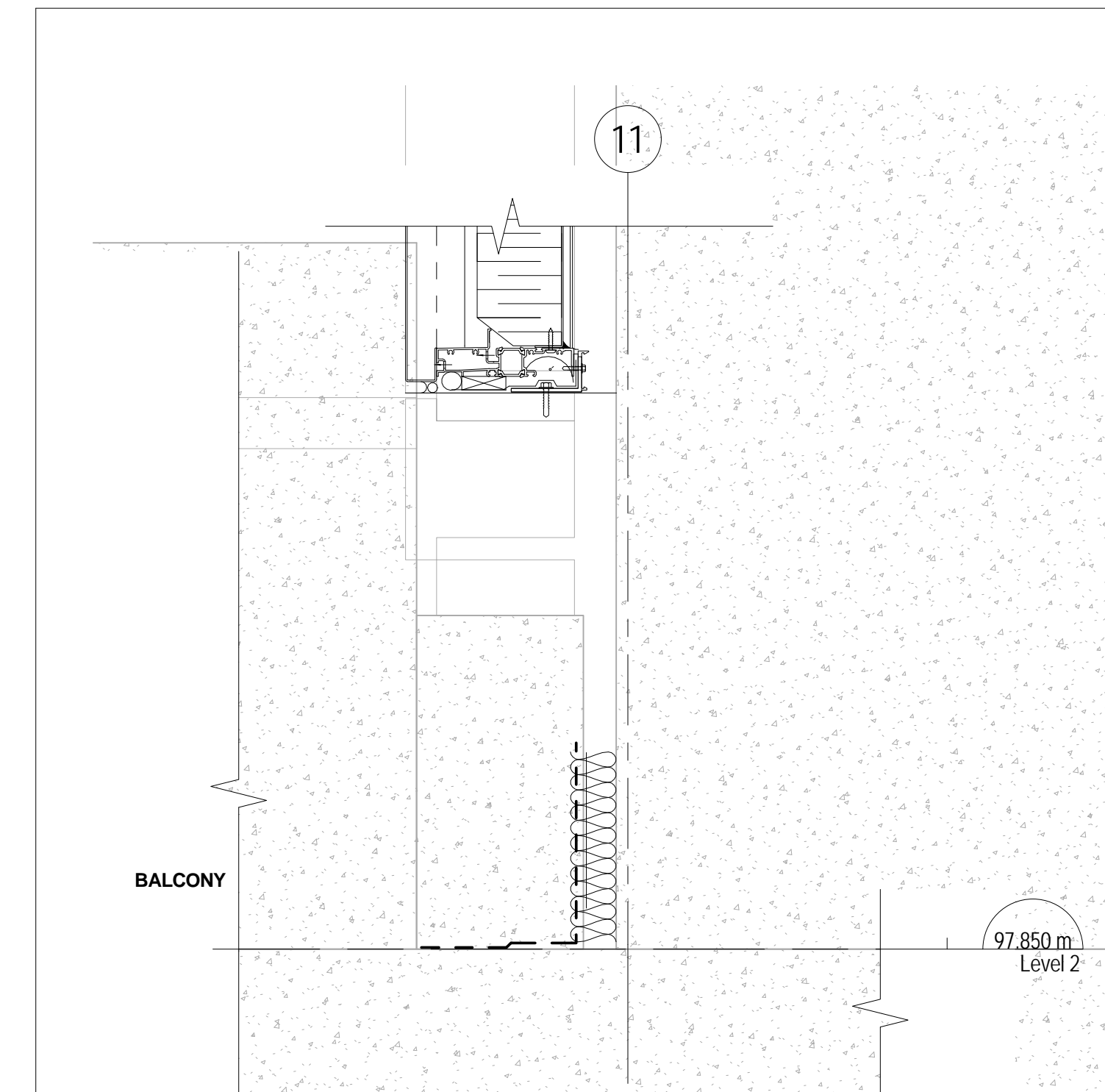


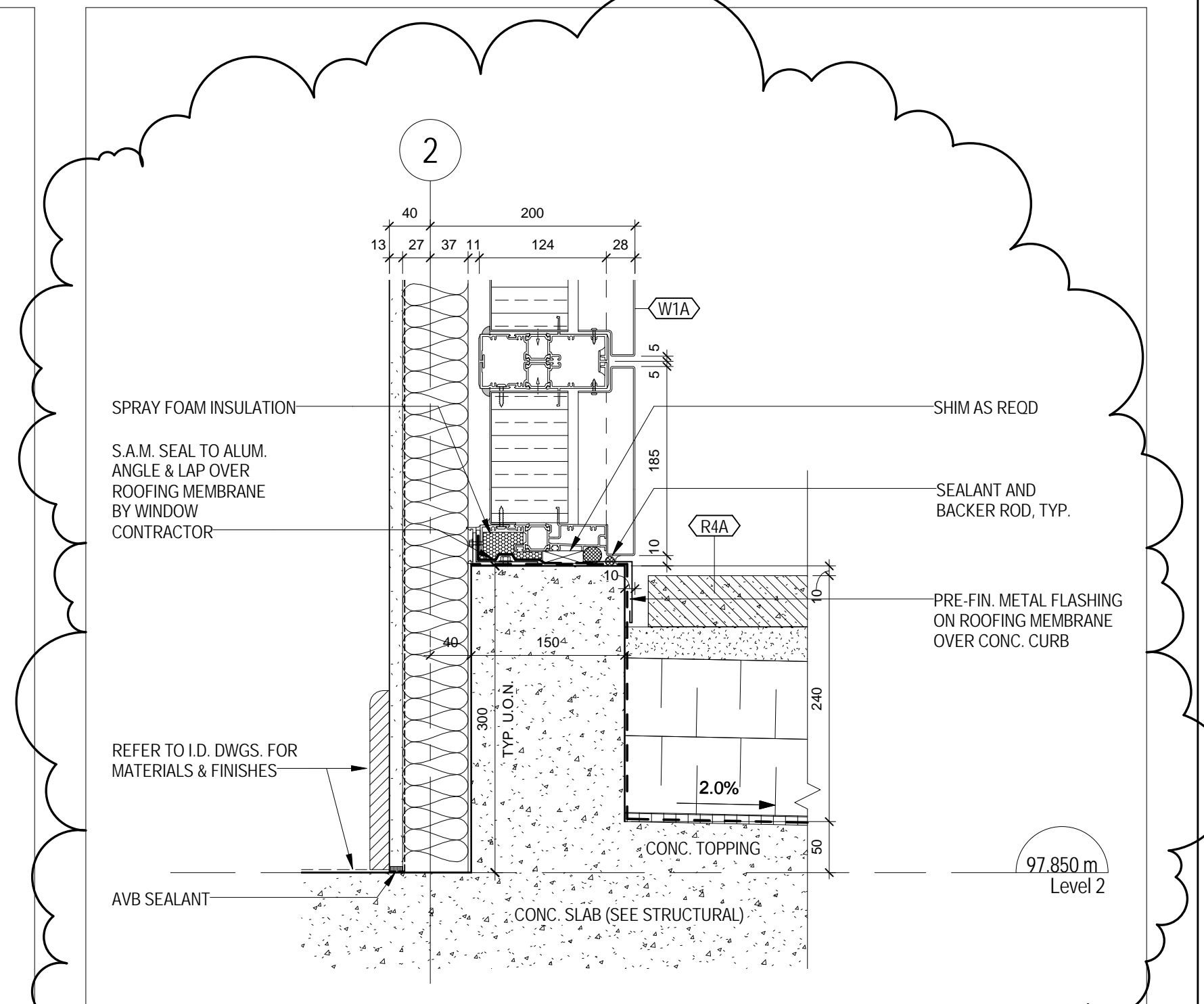
16 SOFFIT CONDITION 2 AT RESIDENTIAL LOBBY EAST
1/A 206 1:5



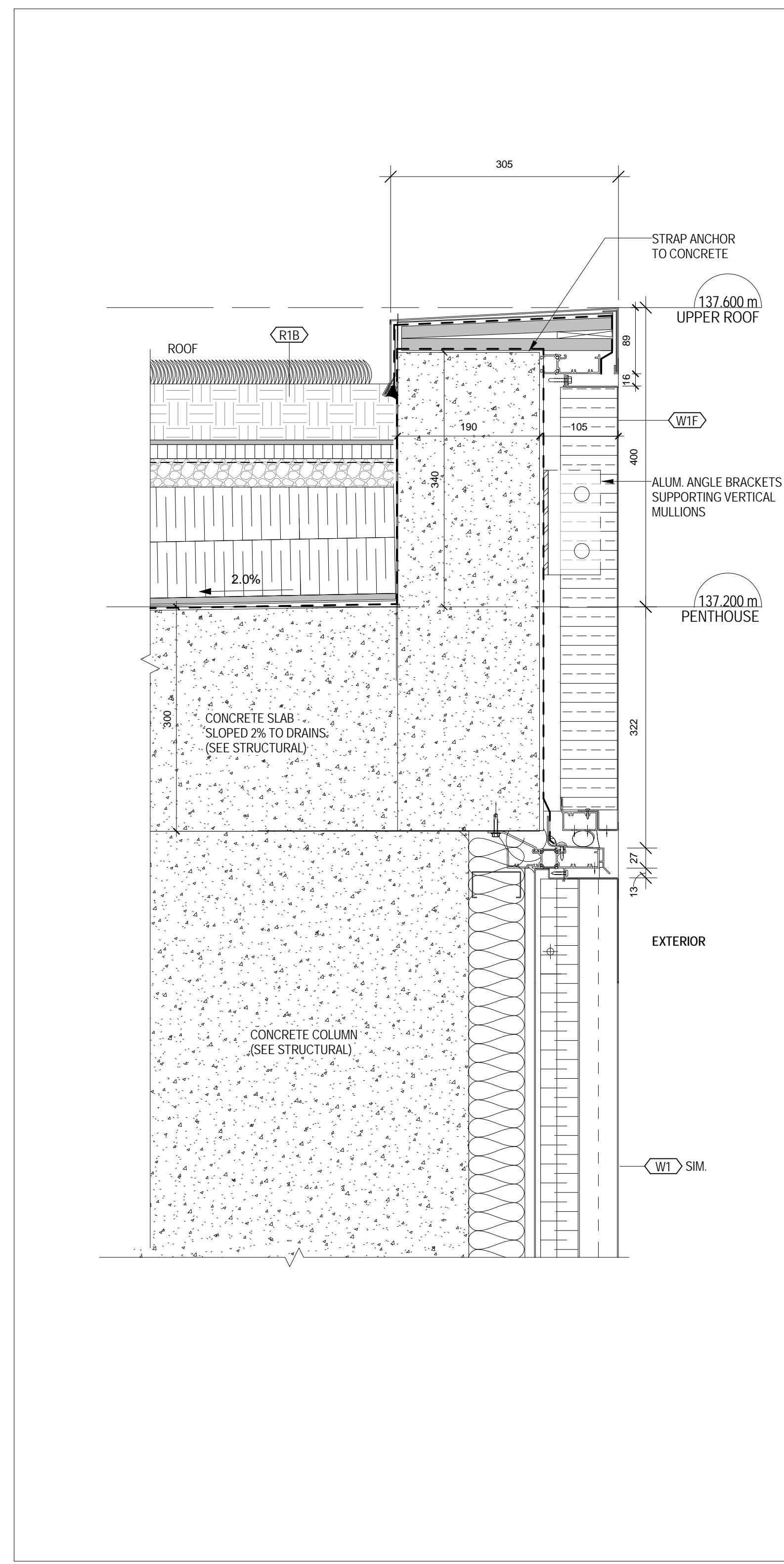
15 SOFFIT CONDITION 1 AT RESIDENTIAL LOBBY EAST
1/A 206 1:5



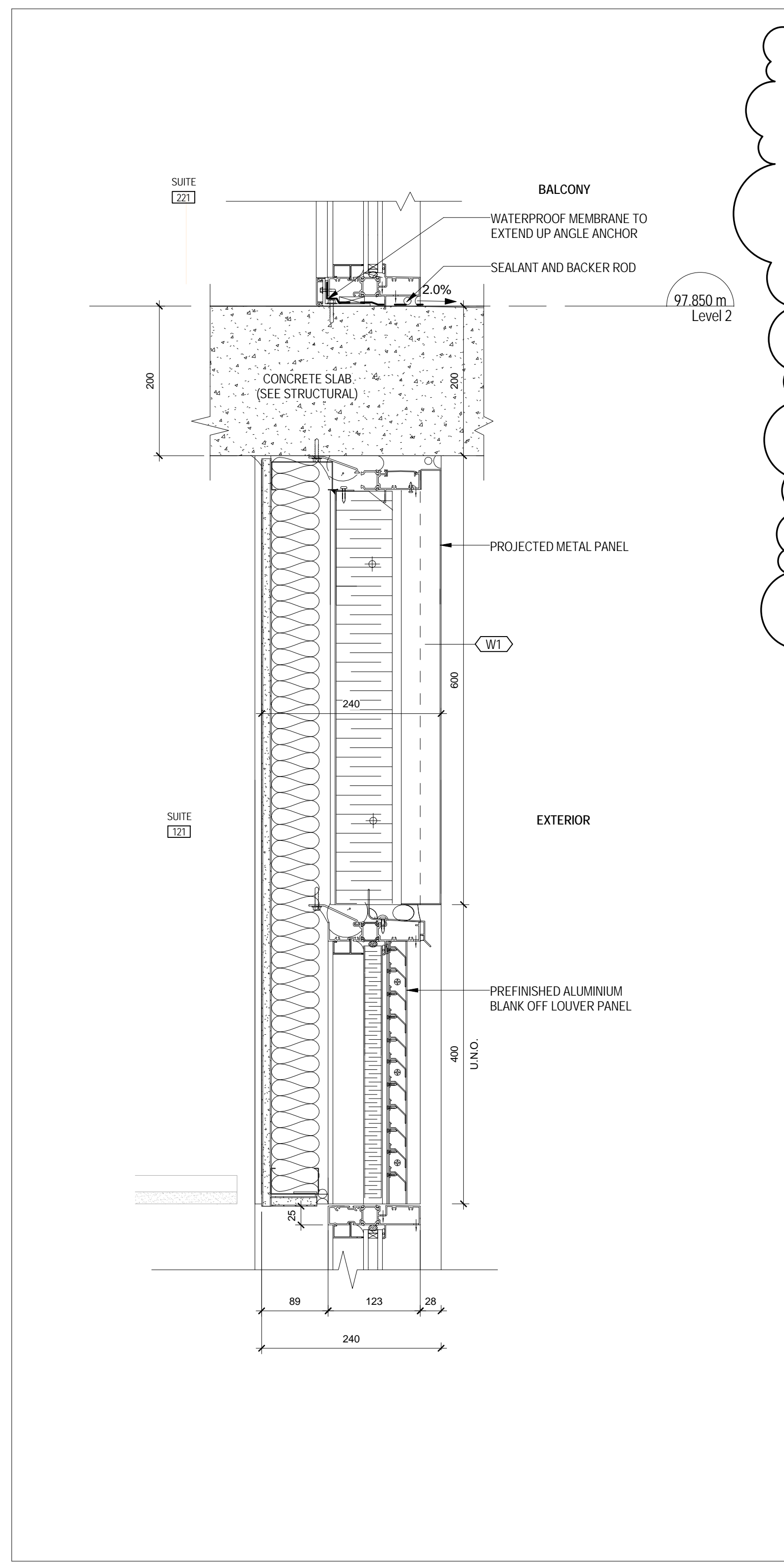
13 TYPICAL TERRACE PARAPET TO BUILDING CORNER
1/A 205 1:5



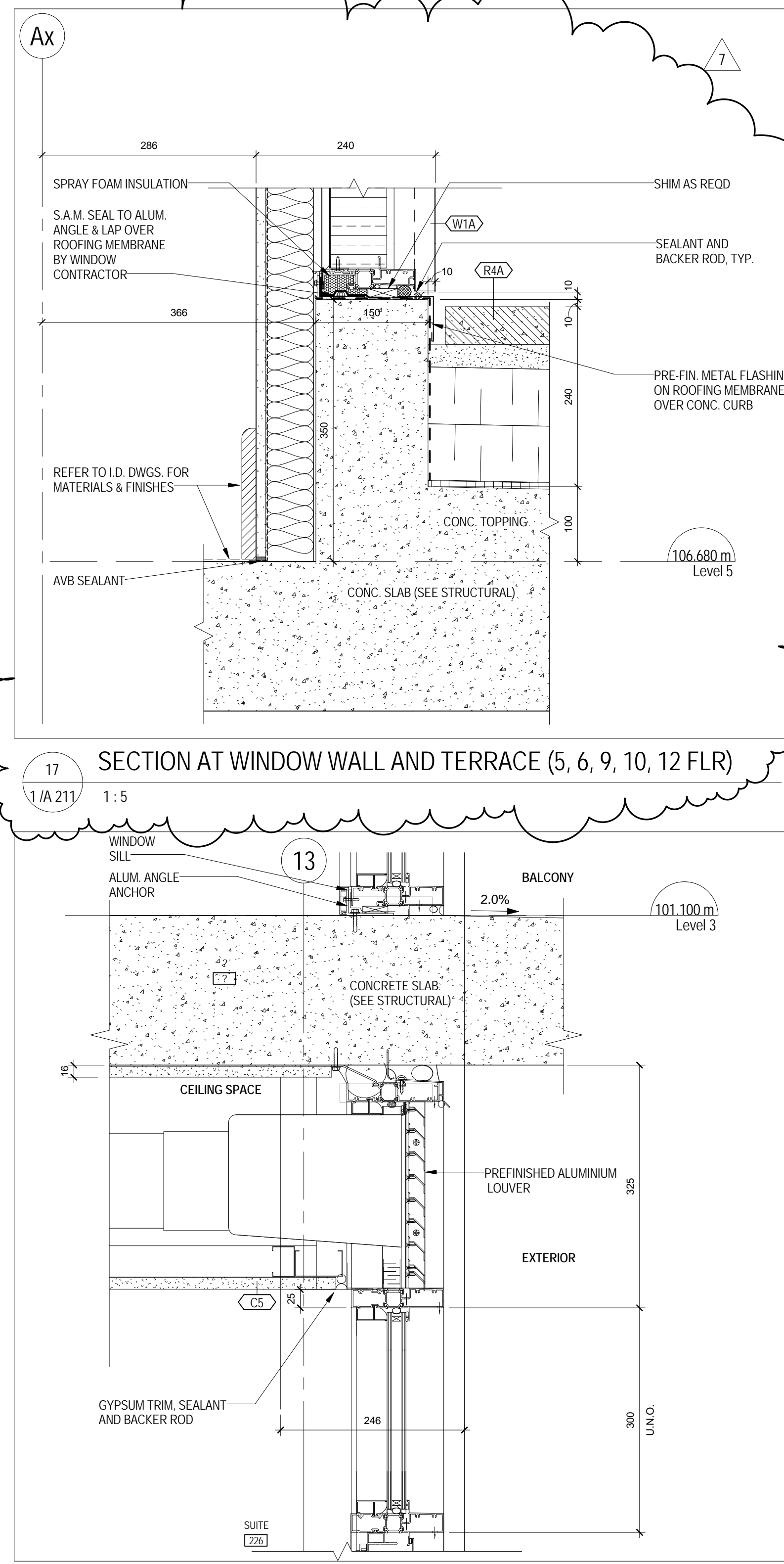
12 TYPICAL WINDOW WALL AT TERRACE CONC. CURB
1/A 205 1:5



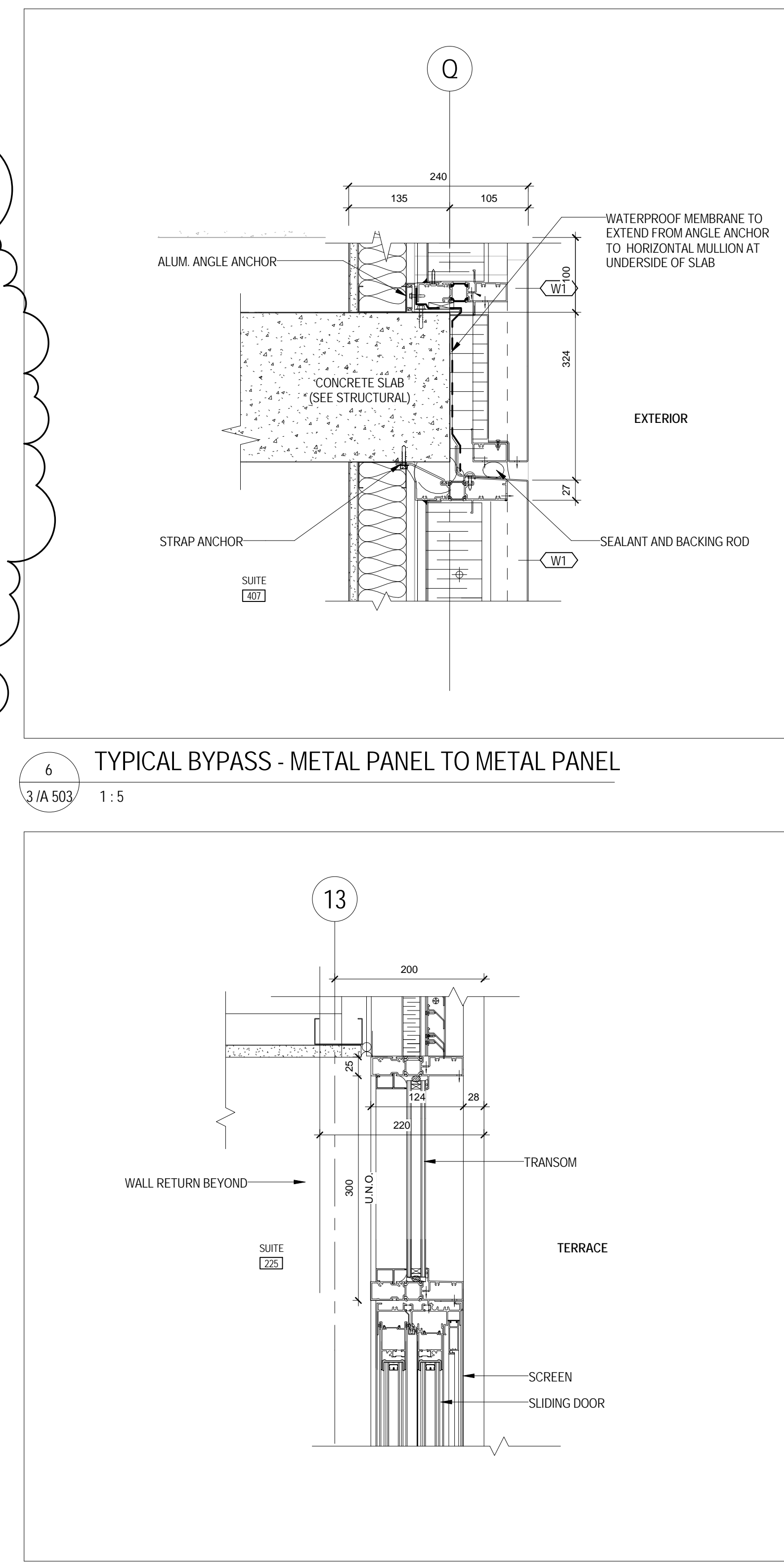
11 PARAPET AT GREEN ROOF
1/A 501 1:5



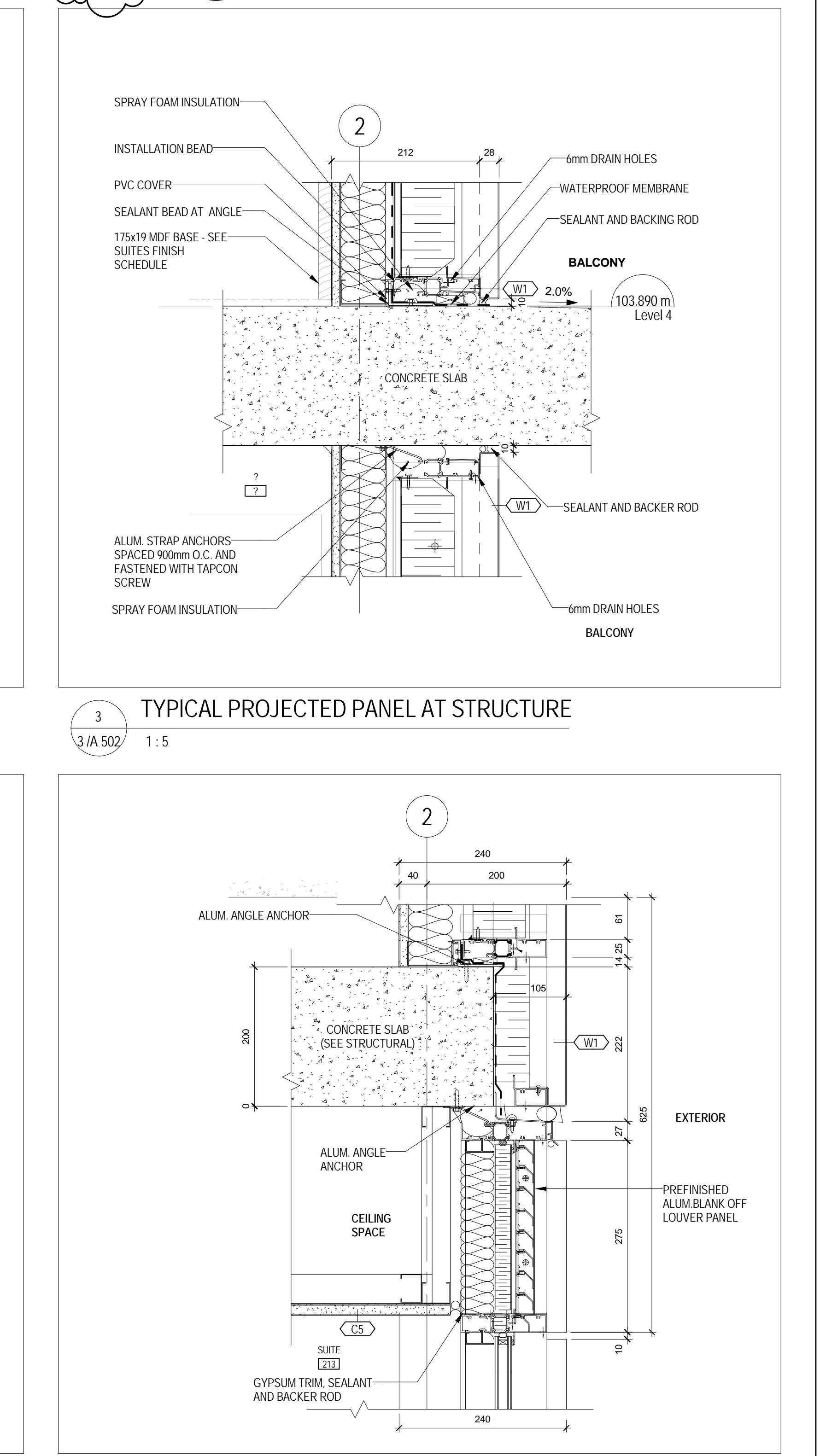
10 TYPICAL BLANK OFF LOUVER
1/A 505 1:5



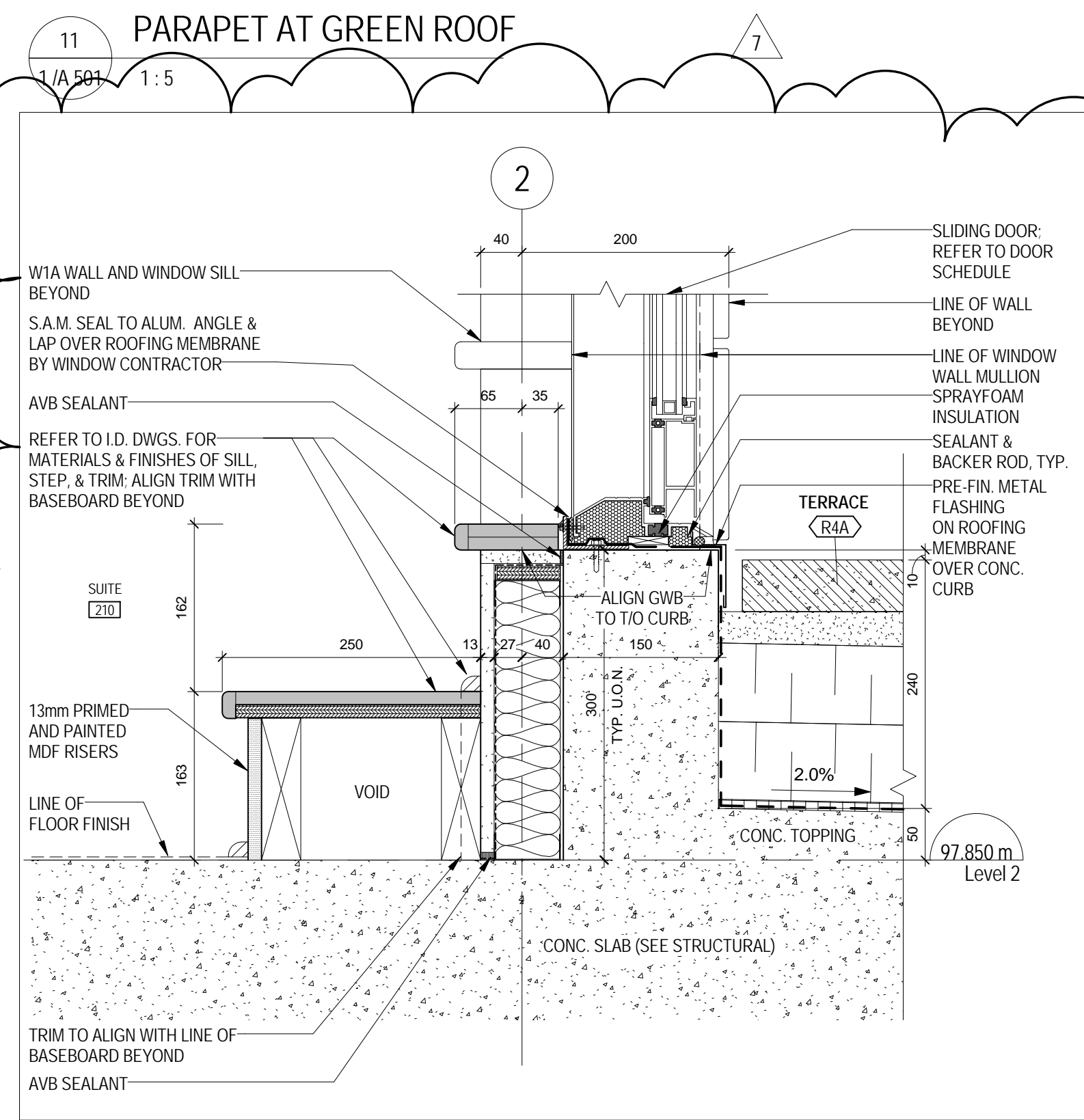
17 SECTION AT WINDOW WALL AND TERRACE (5, 6, 9, 10, 12 FLR)
1/A 211 1:5



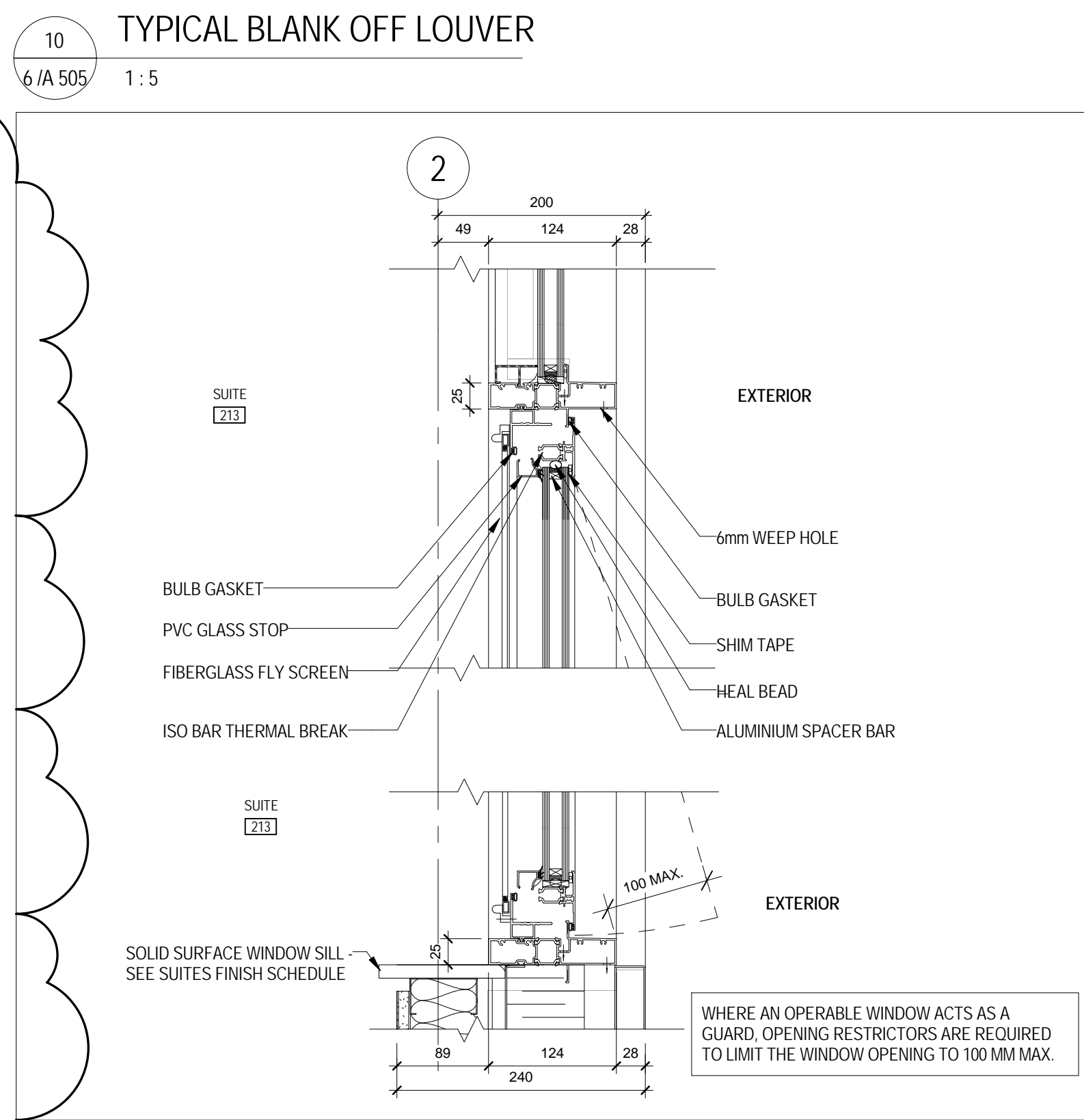
6 TYPICAL BYPASS - METAL PANEL TO METAL PANEL
1/A 502 1:5



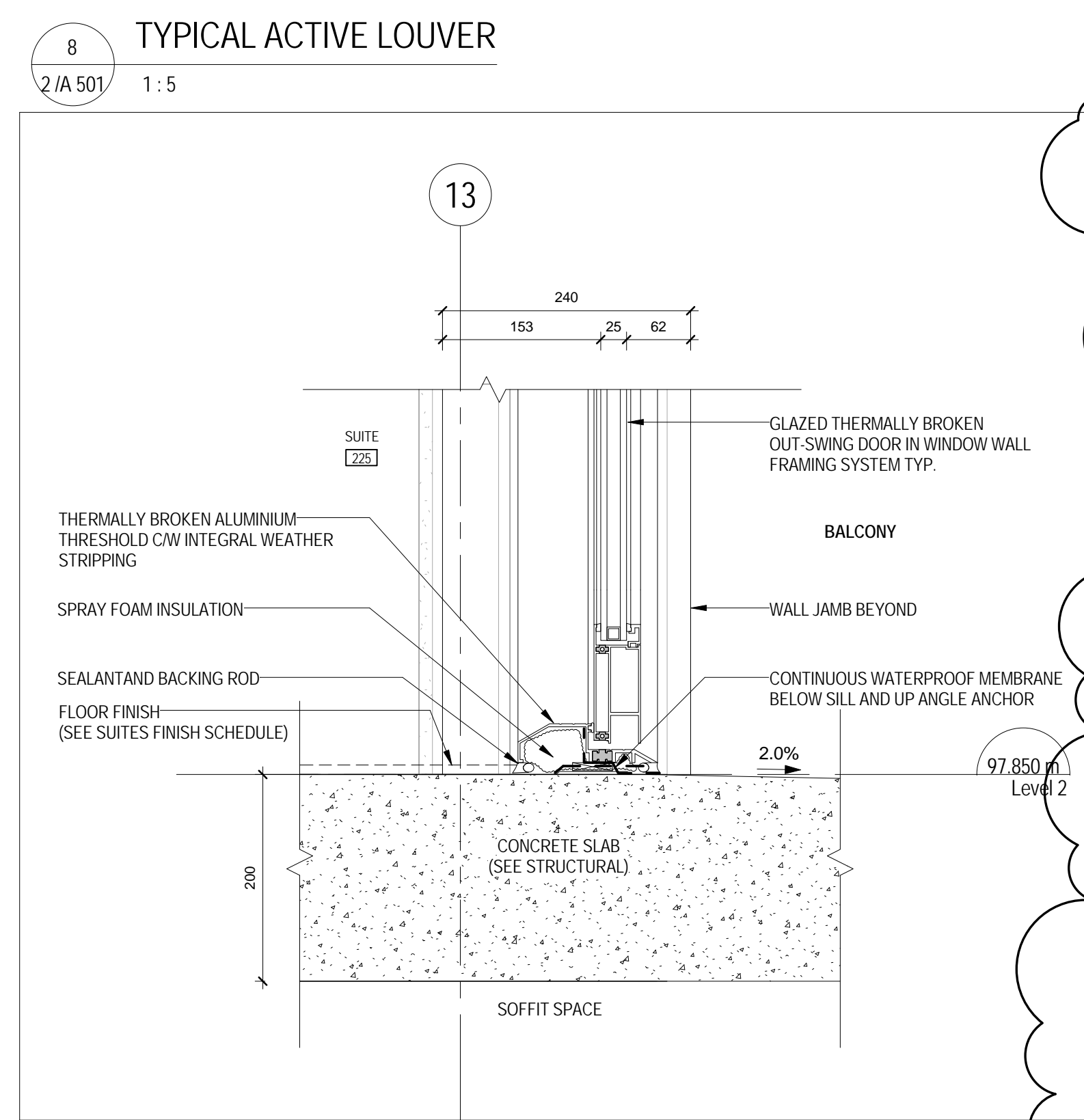
3 TYPICAL PROJECTED PANEL AT STRUCTURE
1/A 502 1:5



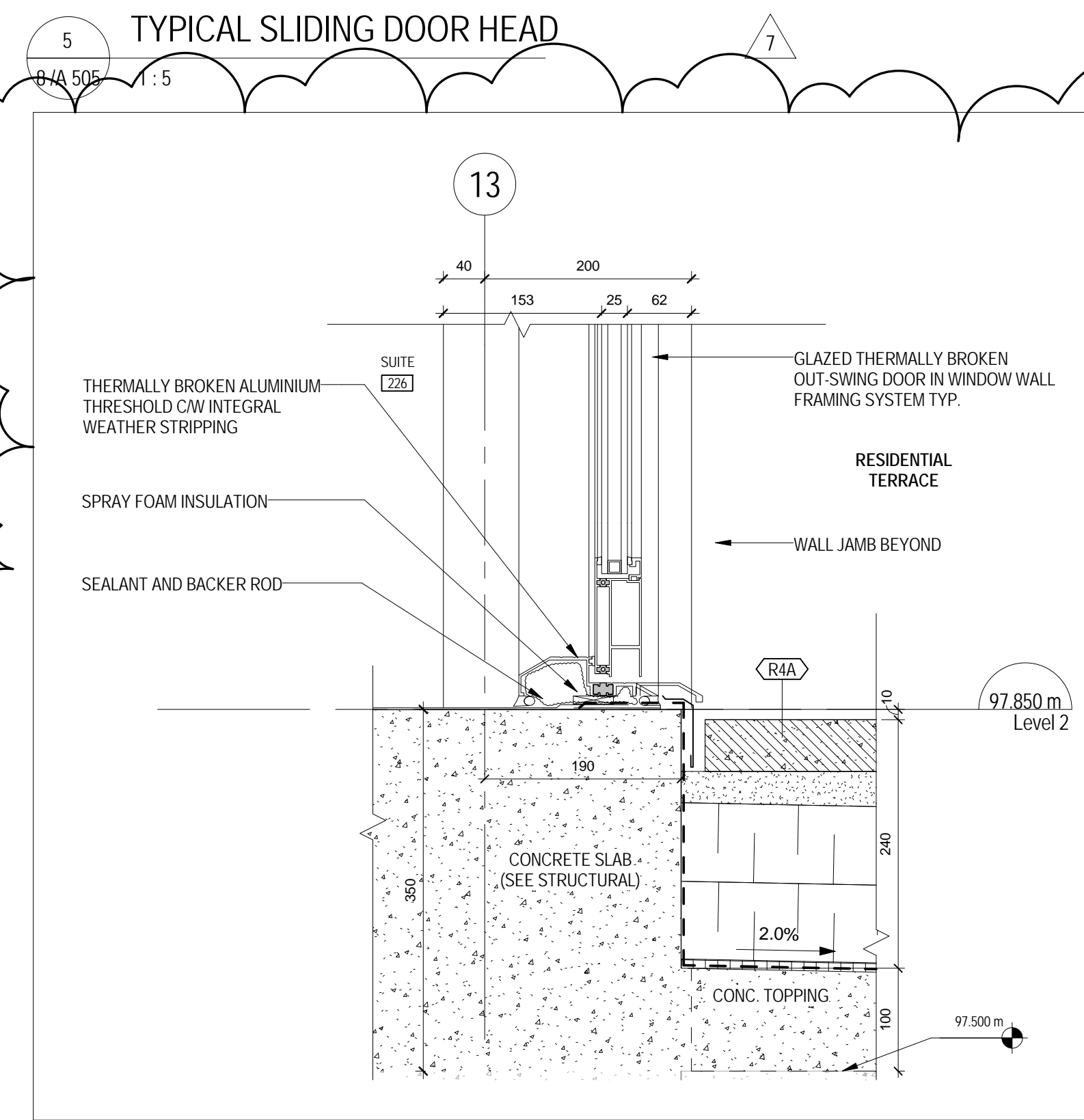
14 SECTION - TYPICAL SWING DOOR AT TERRACE
1/A 206 1:5



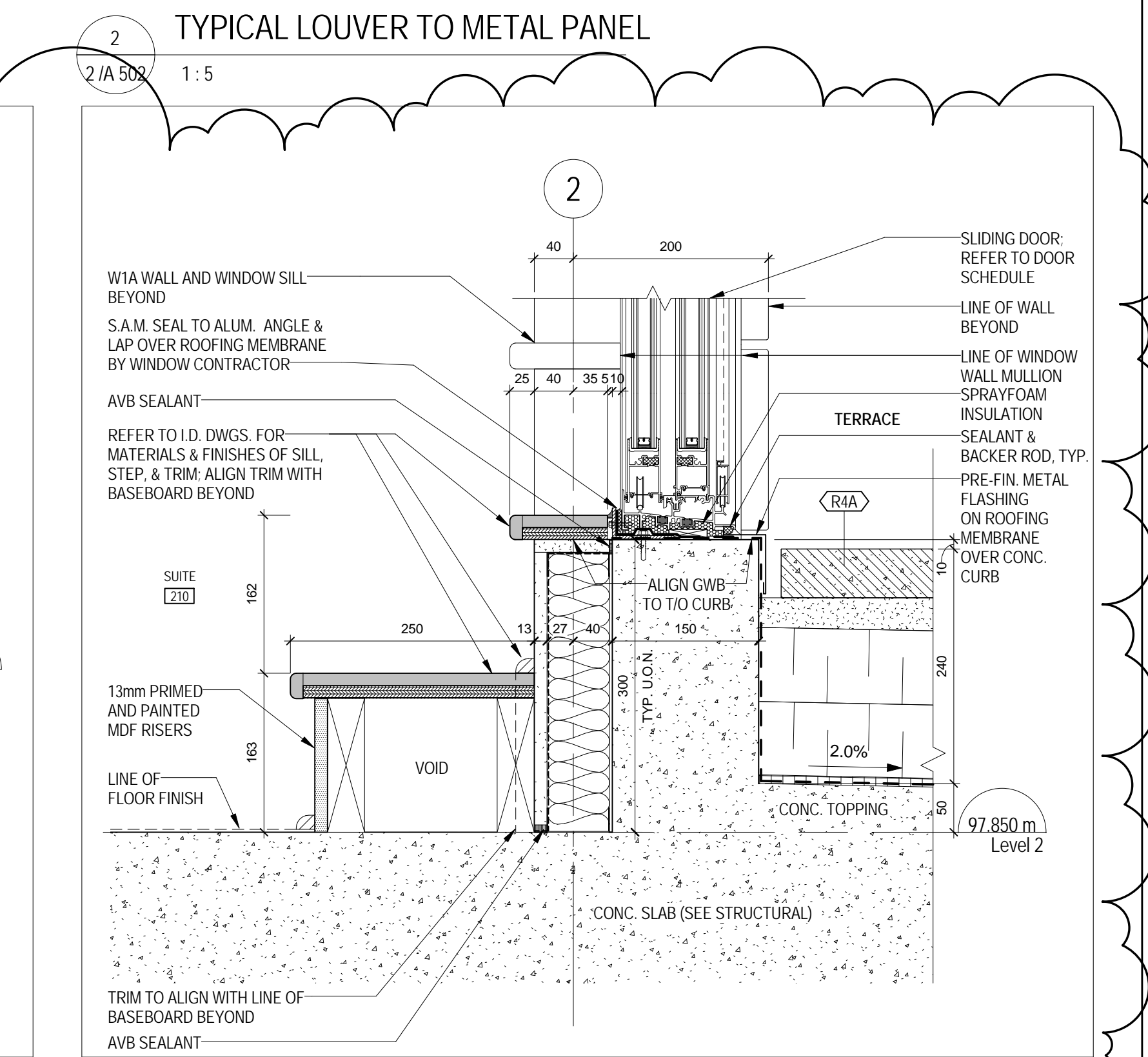
9 TYPICAL AWNING VENT
4/A 502 1:5



7 TYPICAL DOOR SILL AT BALCONY
4/A 505 1:5



4 TYPICAL SWING DOOR AT SUITE TERRACE
1/A 206 1:5



1 TYPICAL SLIDING DOOR AT 2F RAISED TERRACE
1/A 206 1:5

METRIC SCALE DRAWING
FIRST FLOOR ELEV. +83.60m

No.	ISSUED / REVISED FOR	DATE
1	Released for Permit	2014-08-22
2	Issued for Tender	2014-08-26
3	Issued for Tender	2014-08-22
4	Issued for Tender	2015-05-05
5	Issued for Drywall Tender	2015-06-19
6	Issued for S.D. #1	2015-08-26
7	Issued for S.D. #2	2015-09-21