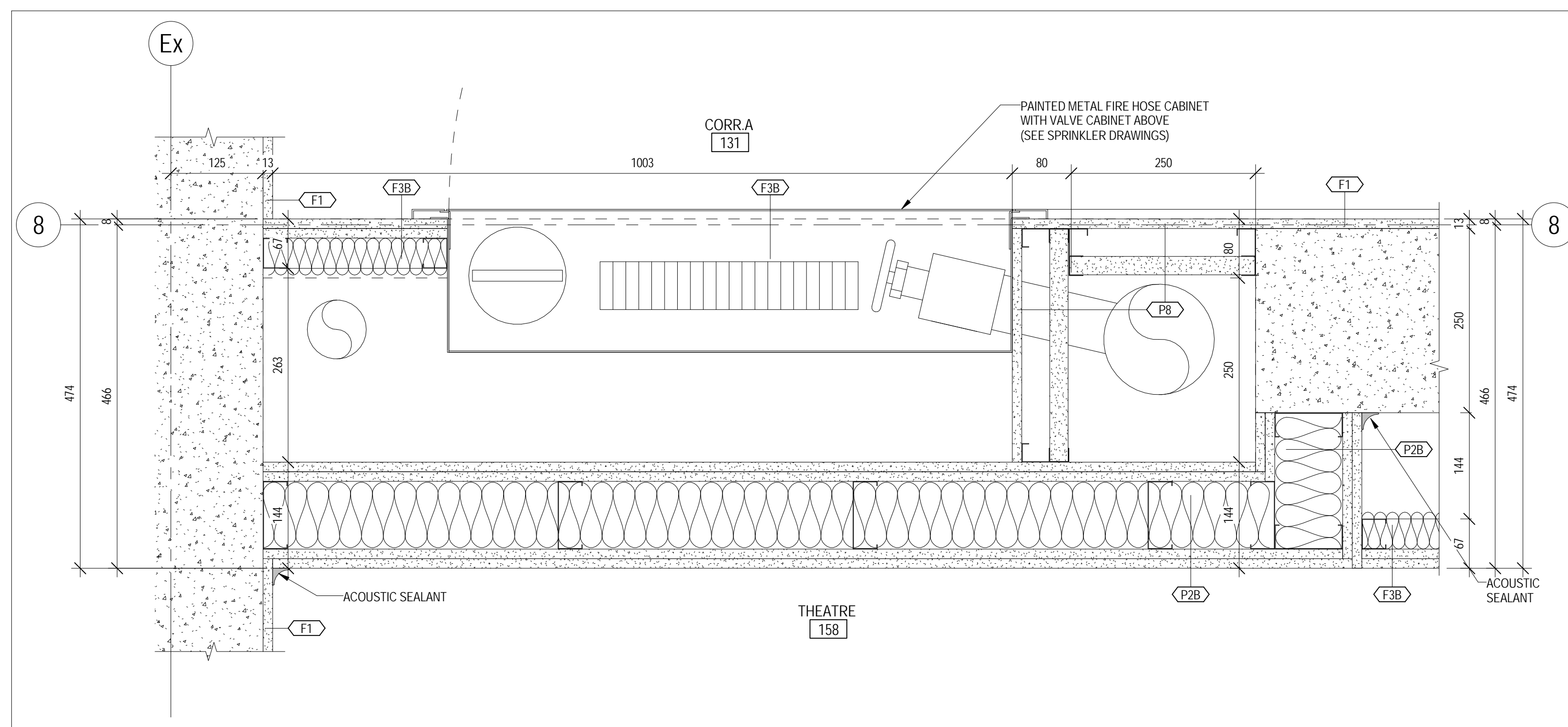
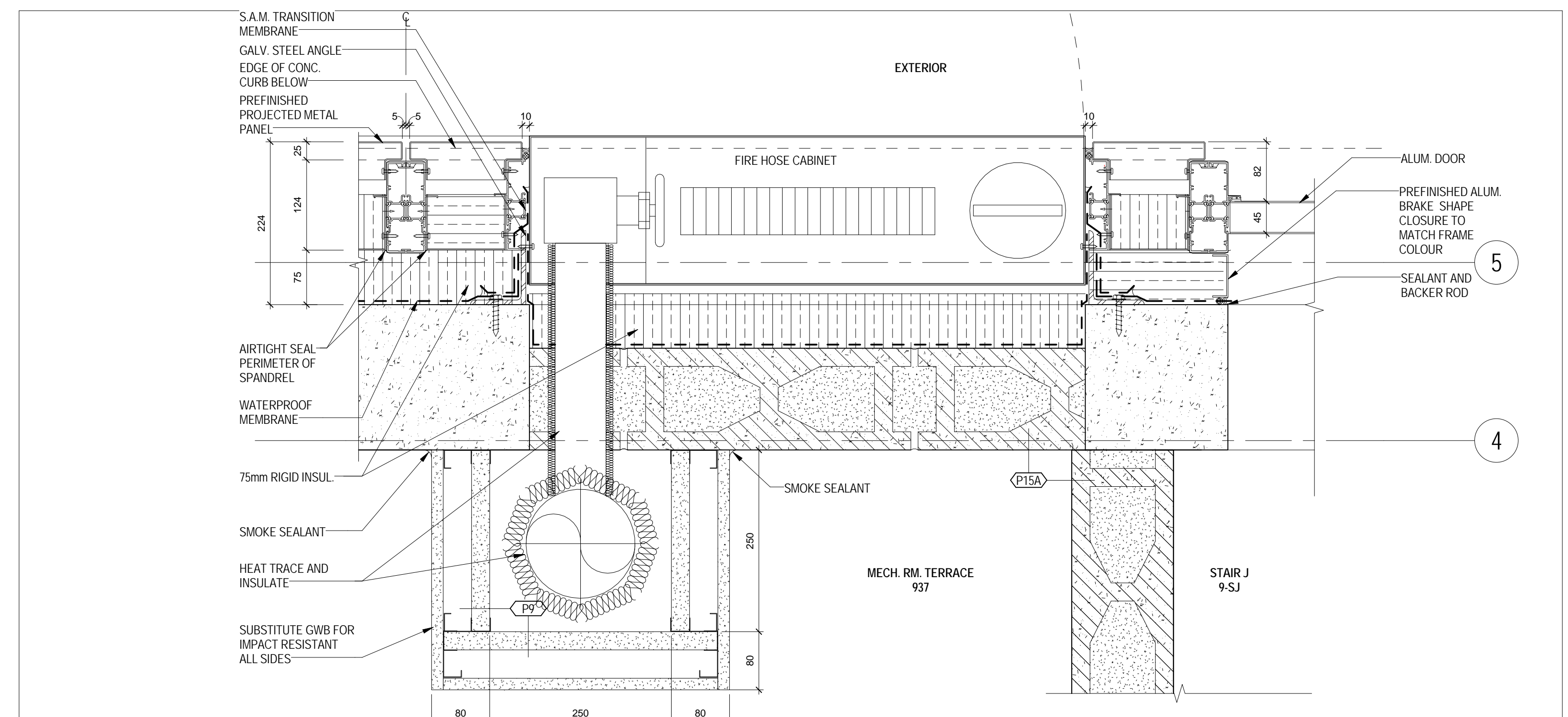


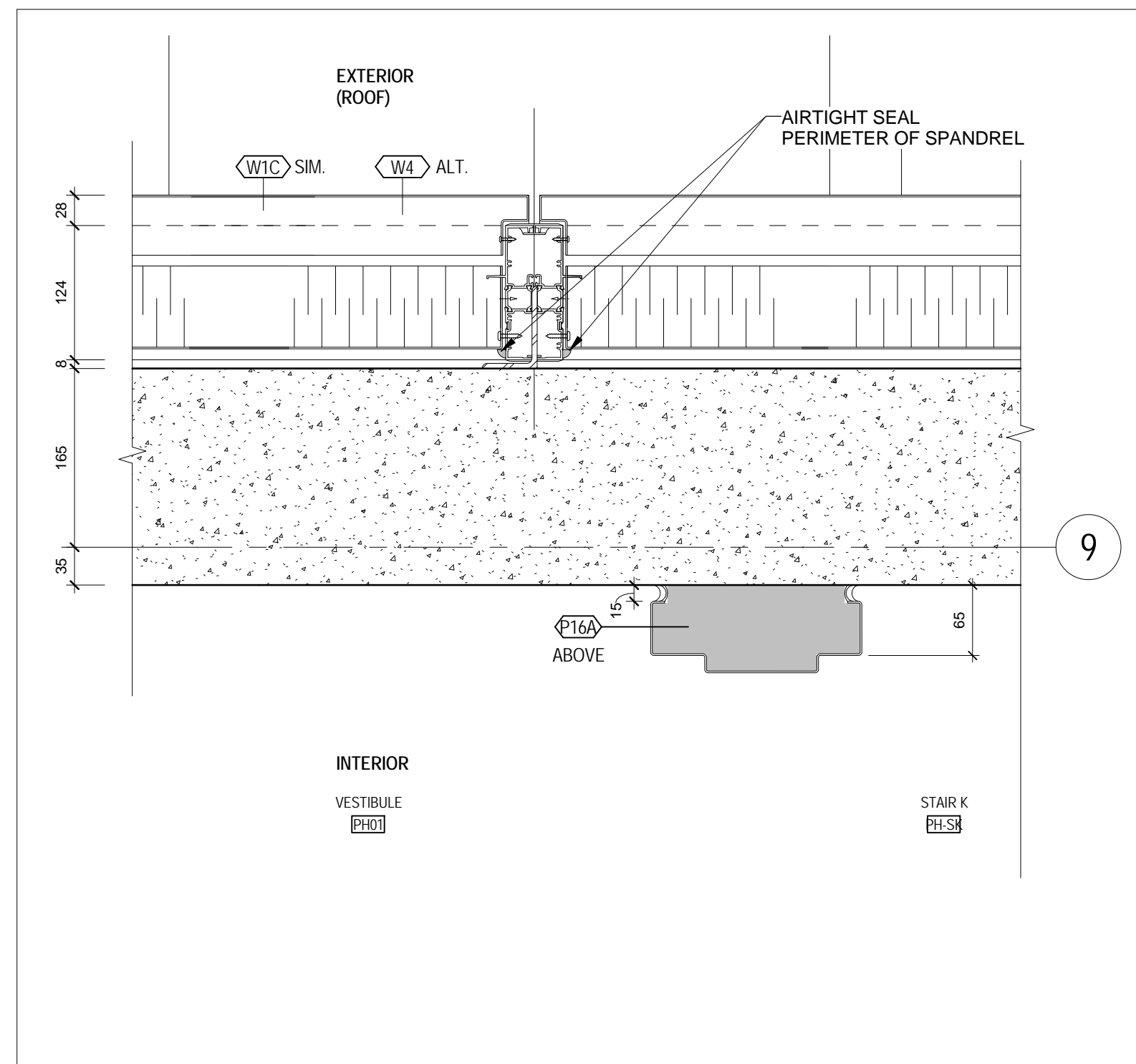
12 PENTHOUSE SUITE DEMISING WALL - AT BOILER ROOM
1/A 225 1:5



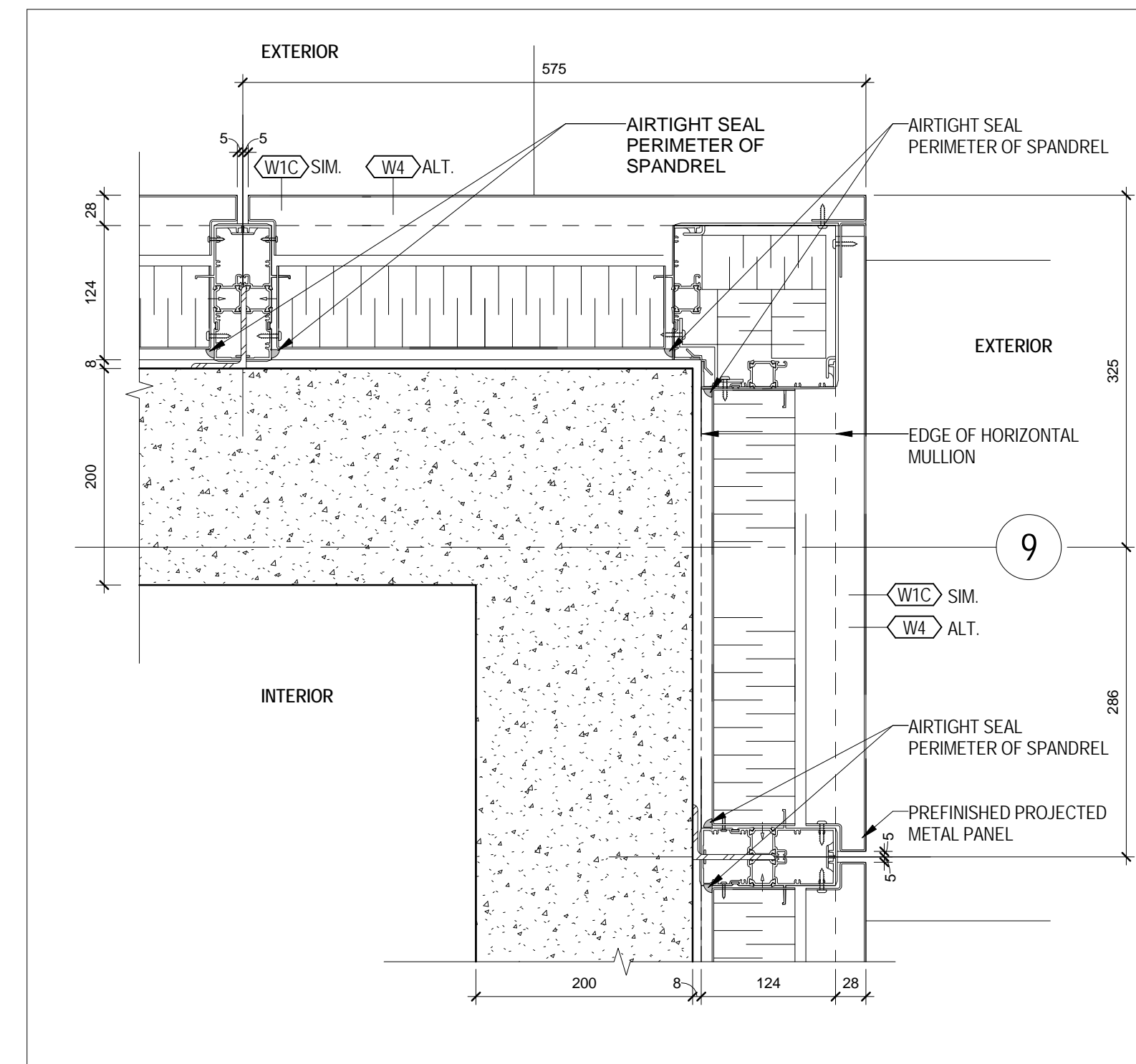
10 FIRE HOSE CABINET AT THEATRE - LEVEL 1
1/A 203 1:5



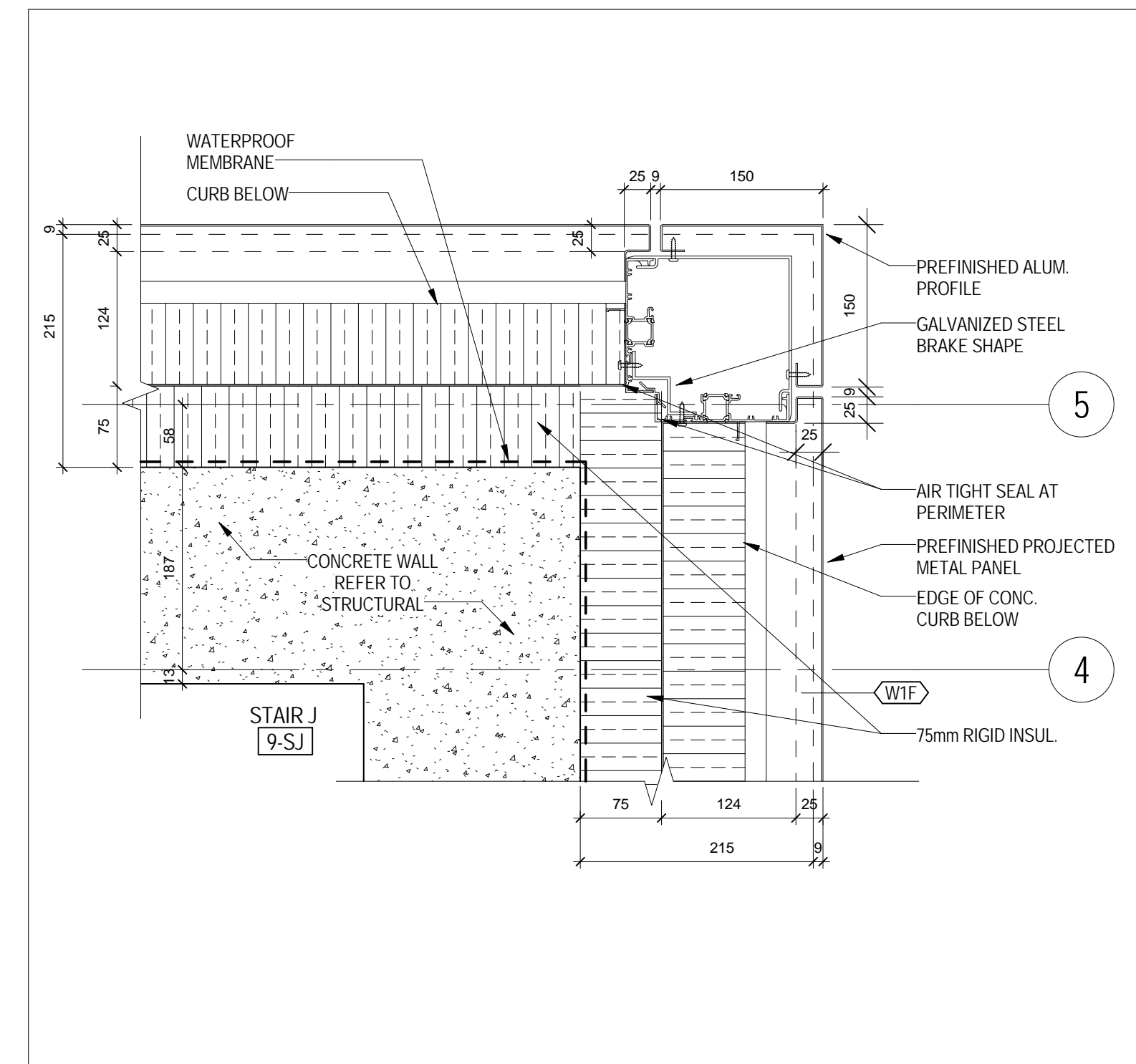
3 PLAN - FHC AT STAIR J
1/A 219 1:5



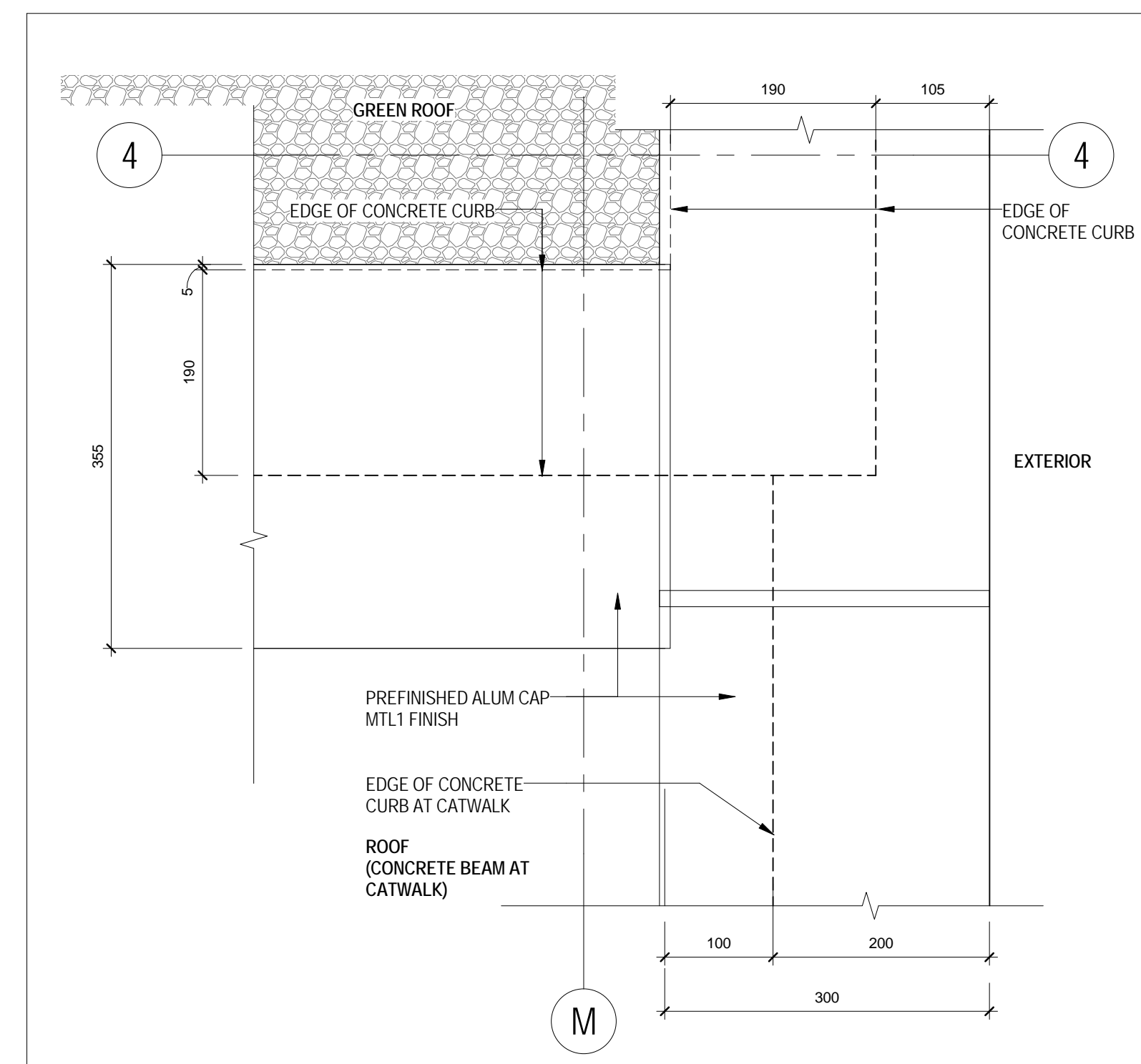
9 ROOF DETAIL AT ELEVATOR MACHINE ROOM VESTIBULE
1/A 226 1:5



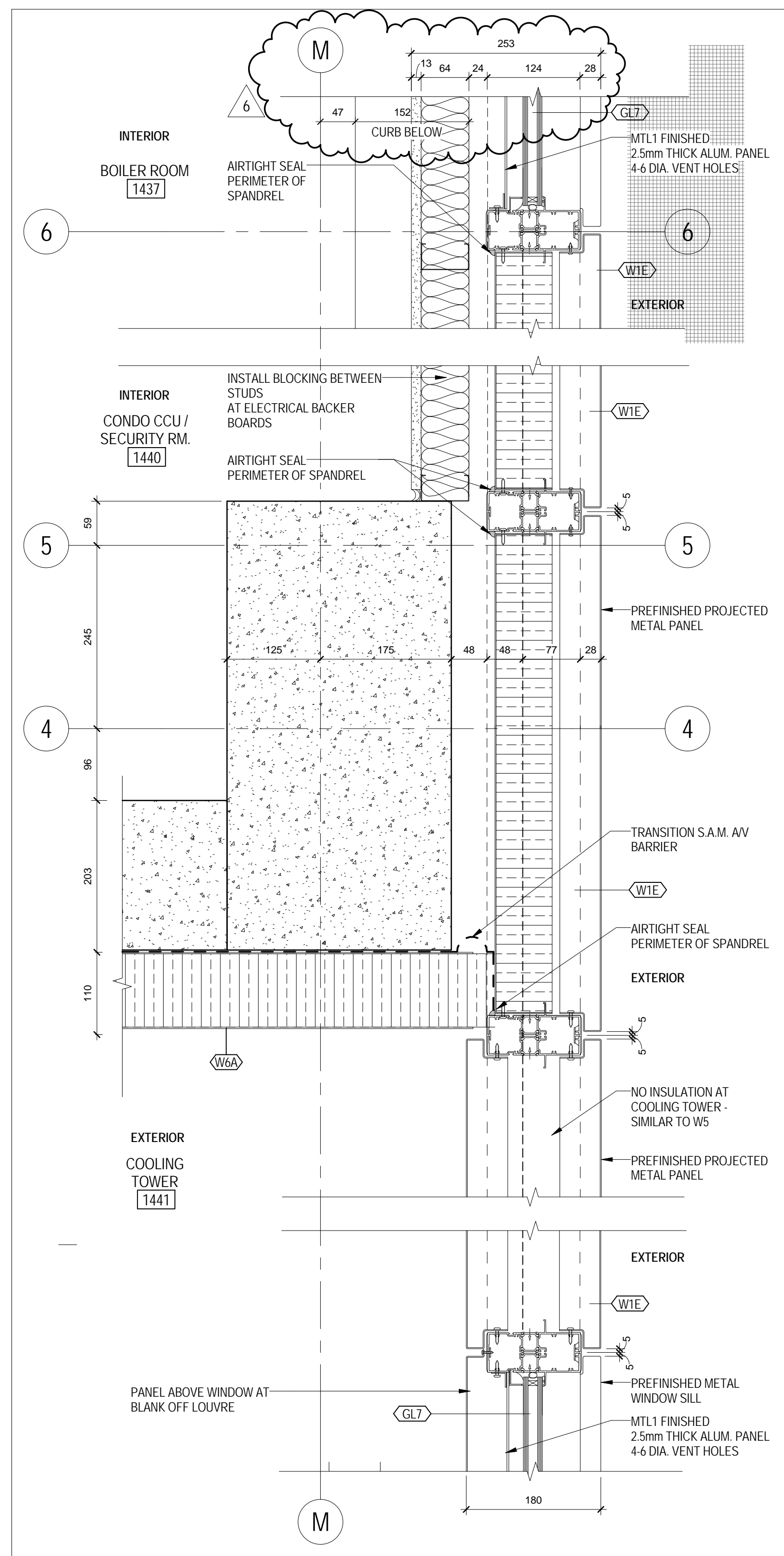
7 ROOF CORNER AT ELEVATOR MACHINE ROOM
1/A 226 1:5



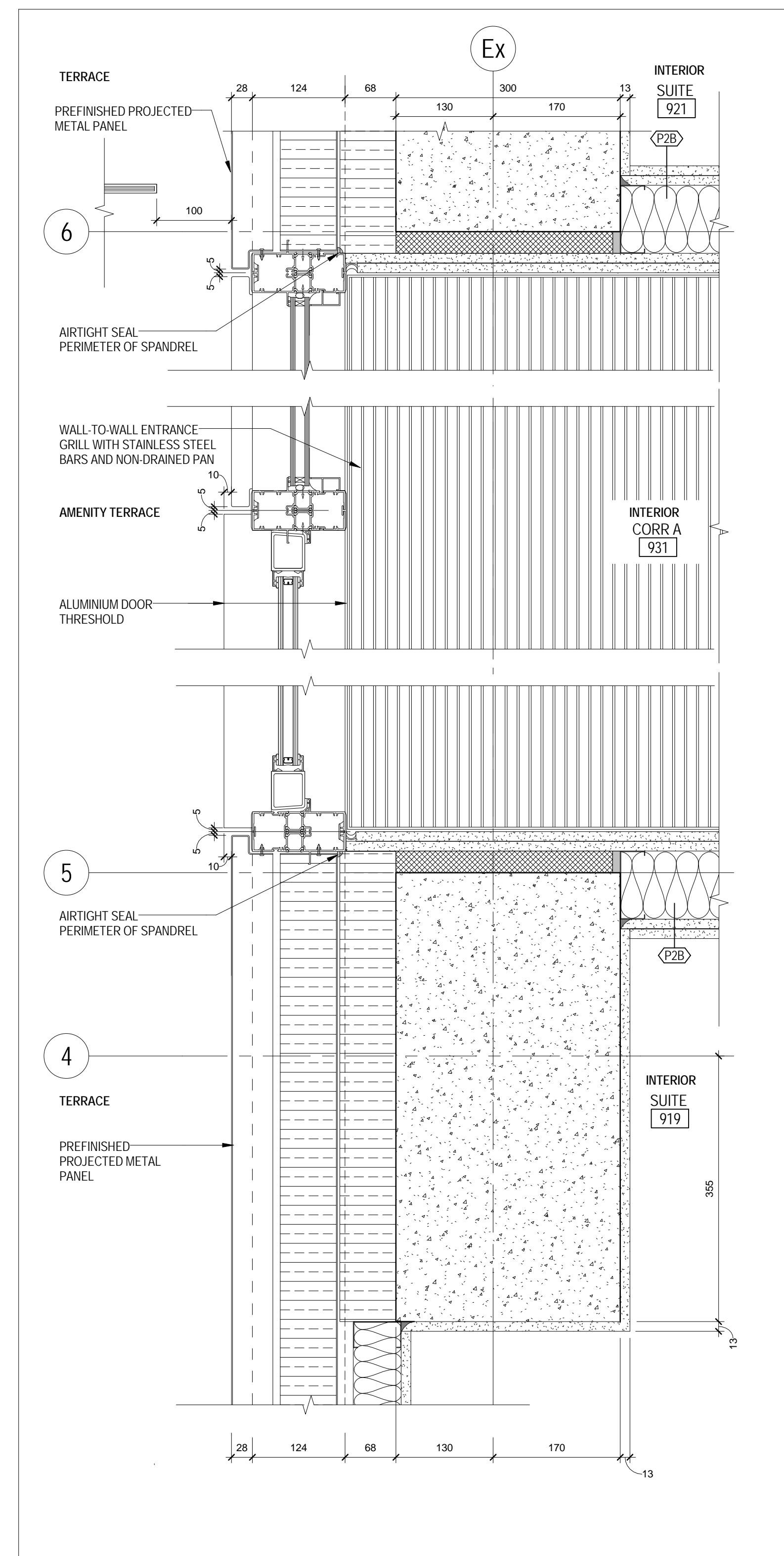
6 STAIR J CORNER PLAN - LEVEL 9
1/A 219 1:5



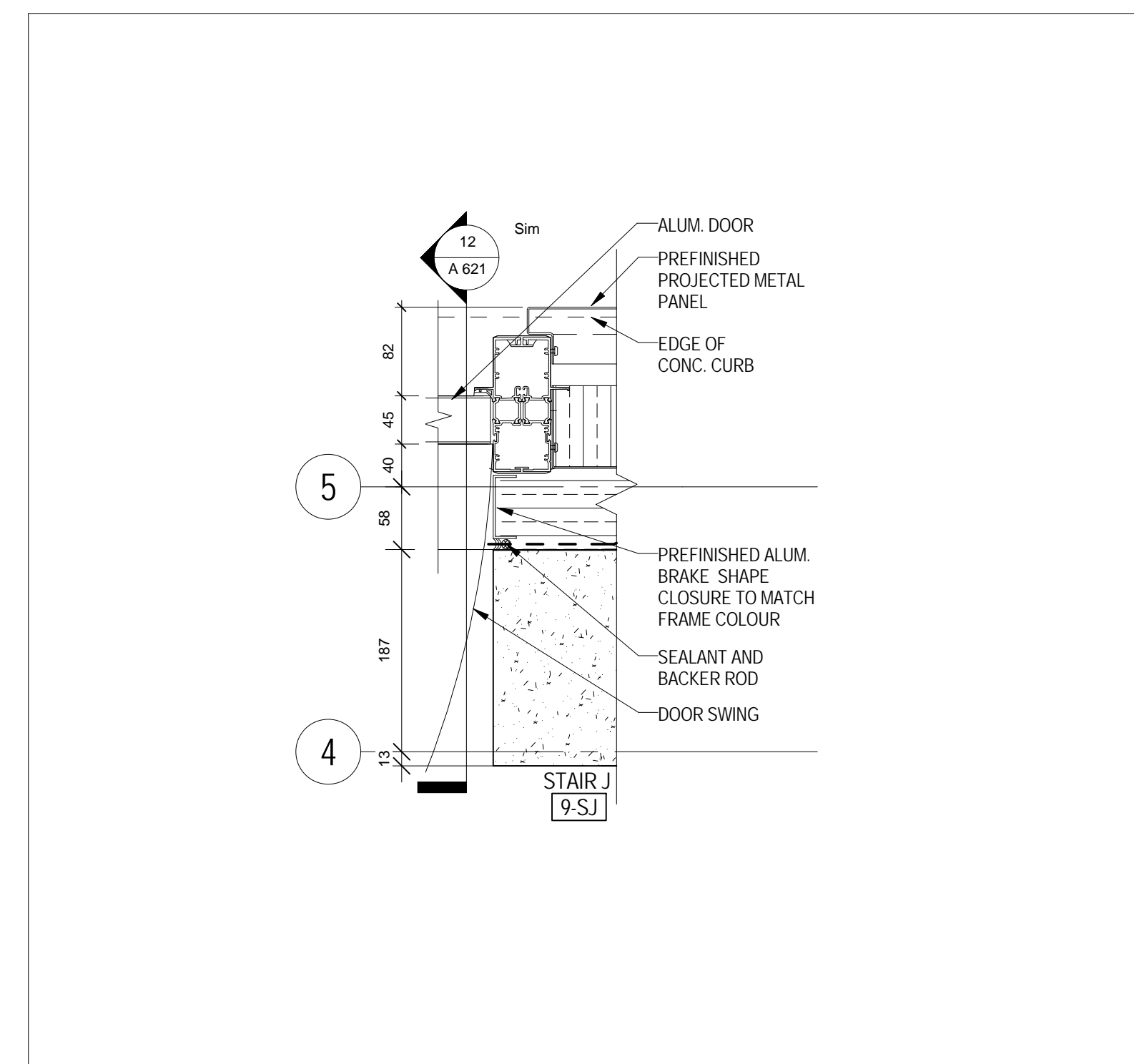
14 PARAPET AT PENTHOUSE
1/A 226 1:5



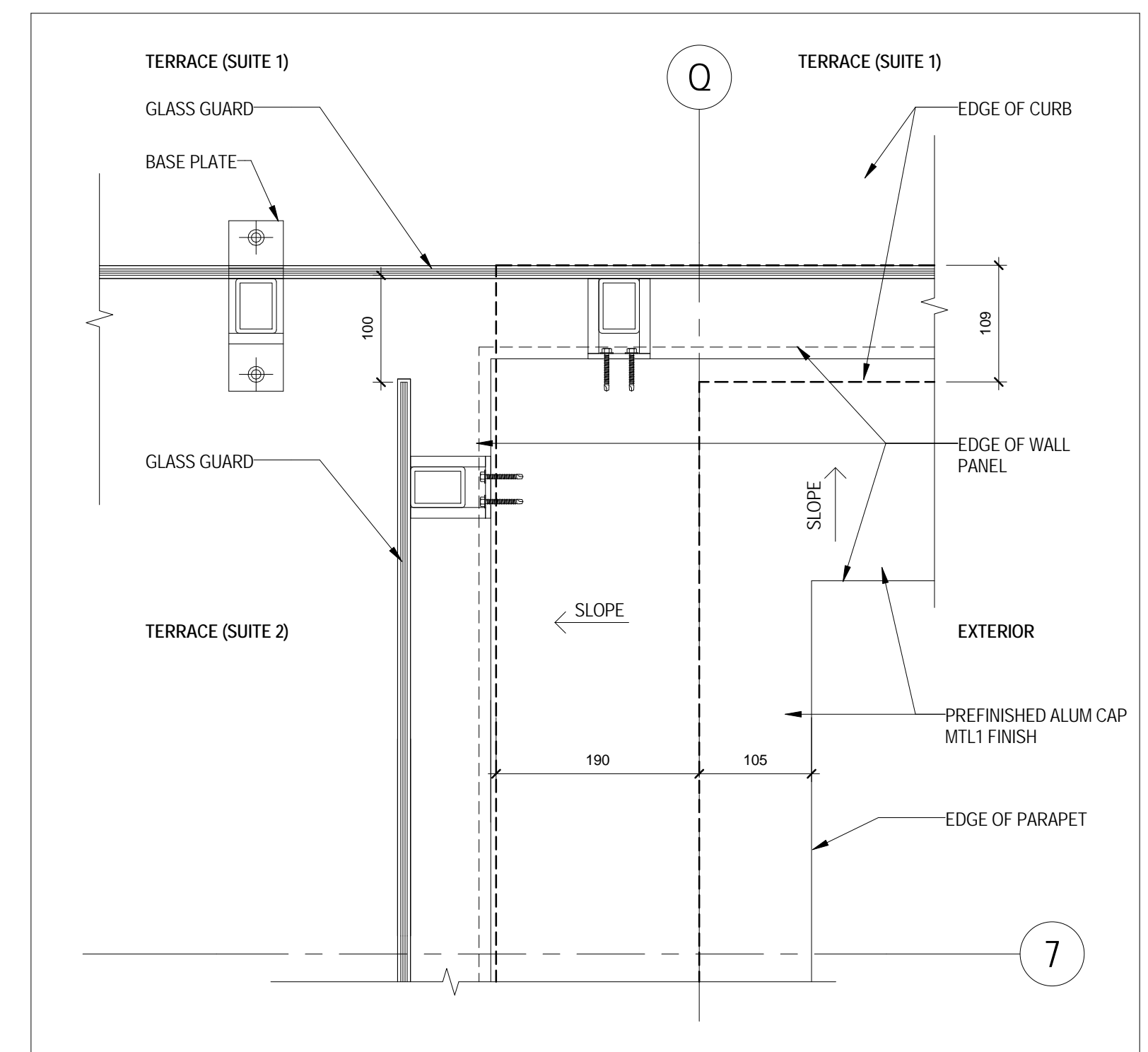
11 LEVEL 14 WALL ASSEMBLY WITH GL7
1/A 226 1:5



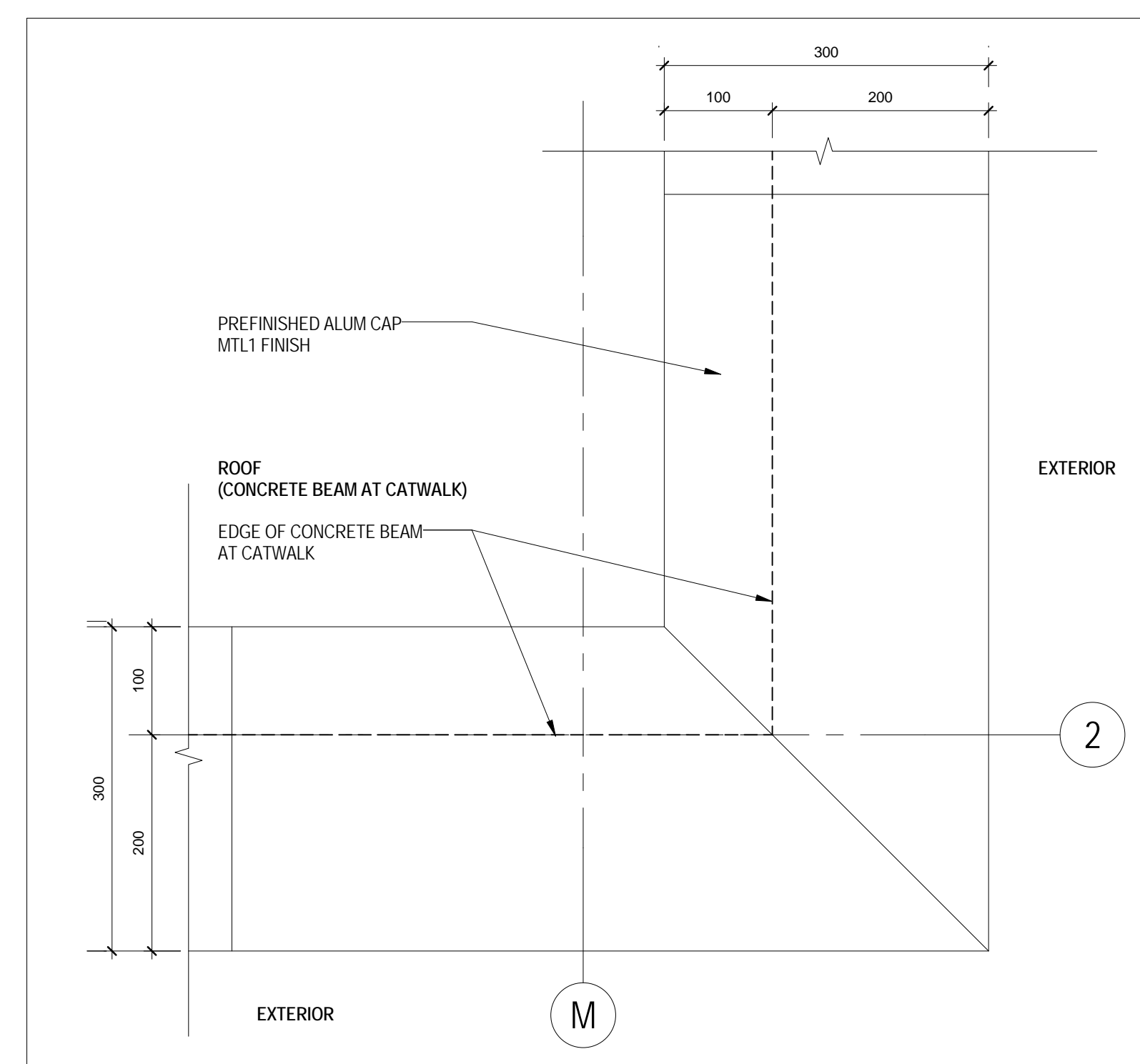
8 TYP - EXTERIOR DOOR AT TERRACE - LEVEL 9
1/A 219 1:5



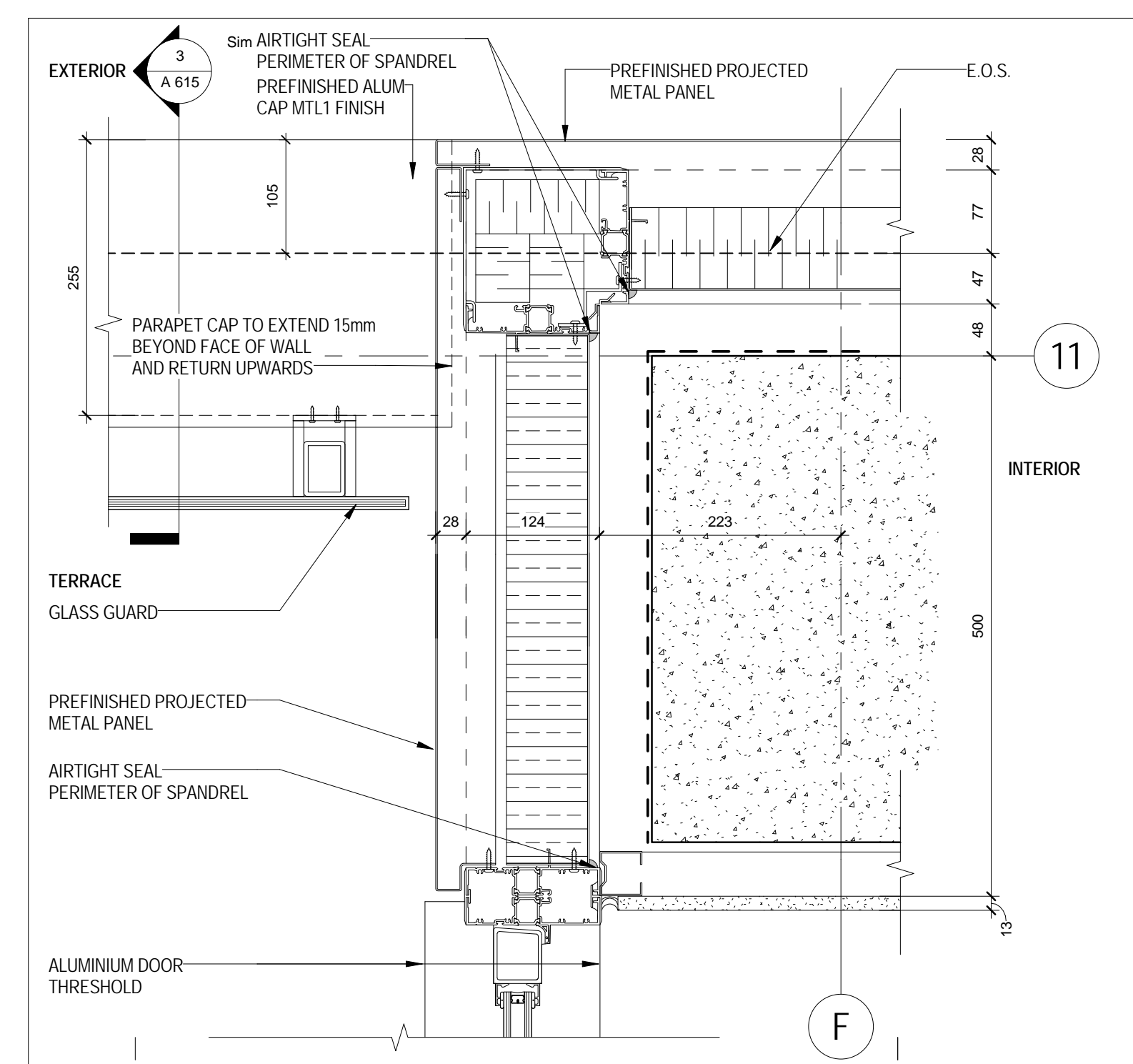
4 STAIR J DOOR PLAN - LEVEL 9
1/A 219 1:5



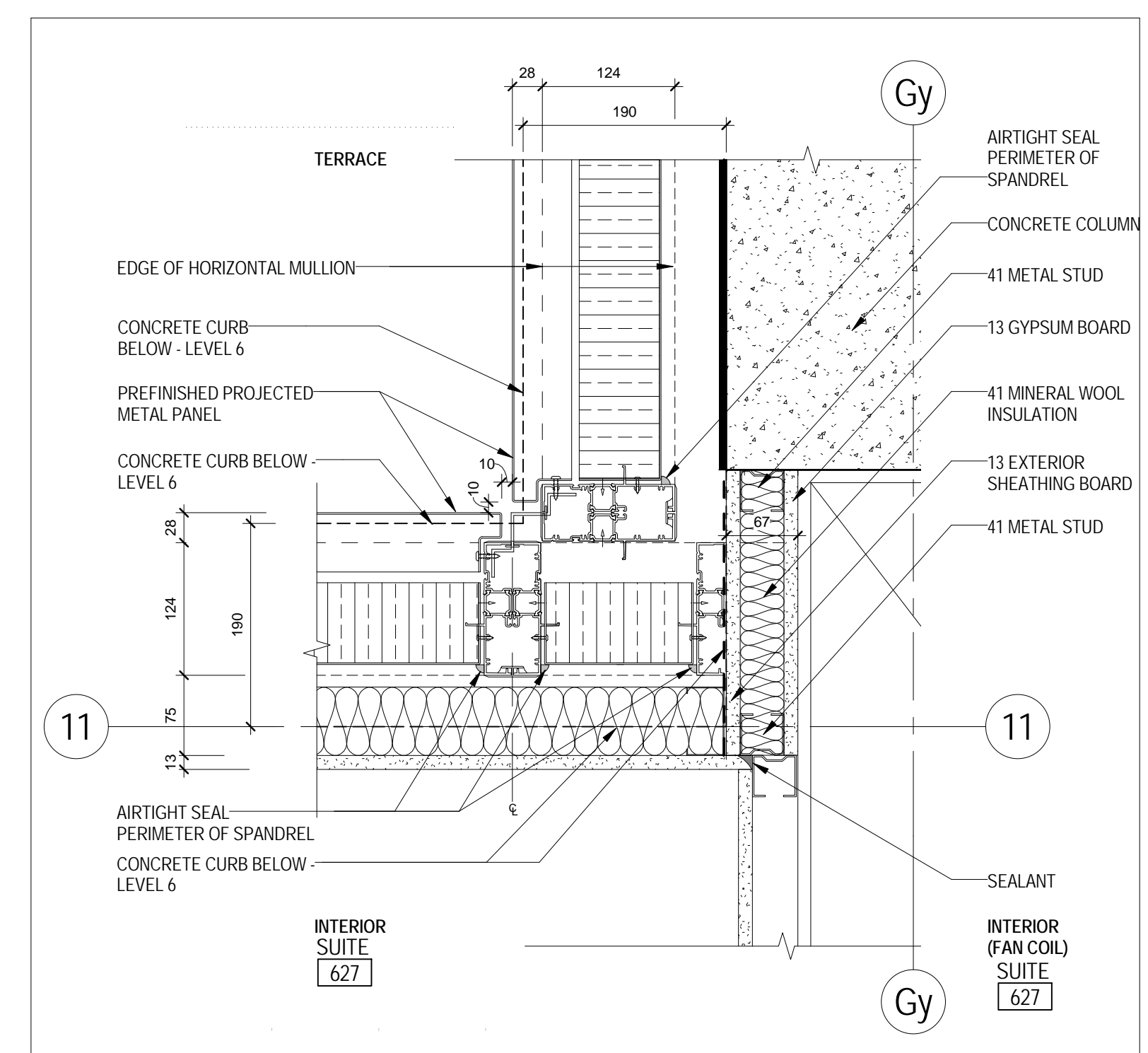
2 TYPICAL TERRACE CORNER AT DIVIDER - LEVEL 6
1/A 214 1:5



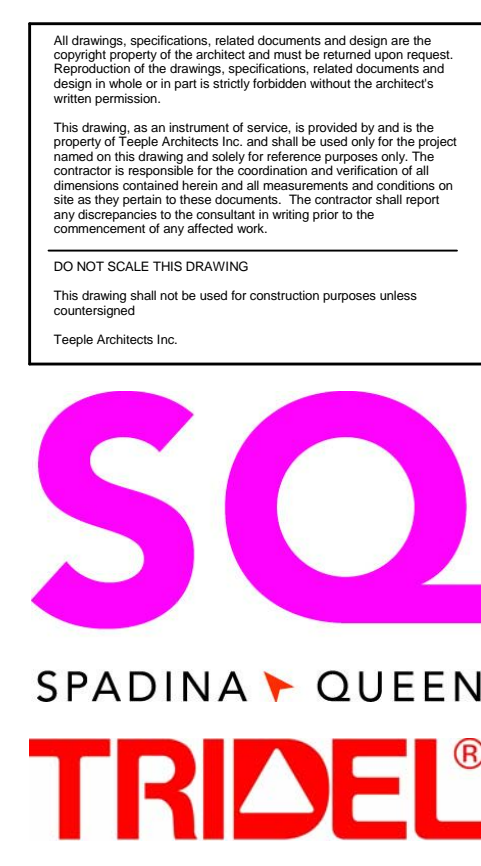
13 PARAPET AT PENTHOUSE
1/A 226 1:5



5 EXTERIOR CORNER - AMENITY TERRACE - LEVEL 9
1/A 219 1:5



1 EXTERIOR CORNER - LEVEL 6
1/A 213 1:5



METRIC SCALE DRAWING
FIRST FLOOR ELEV. +93.60m

No.	ISSUED/REVISION FOR	DATE
1	Issued for Tender	2014-09-22
2	Issued for Tender	2015-05-08
3	Issued for Final Tender	2015-09-19
4	Issued for Final Tender Add #1	2015-09-19
5	Issued for Add #1	2015-10-06
6	Issued for Add #2	2016-03-24

project no. 12-115
scale: 1:5
drawn by: Author
checked by: Checker
date: 2014-09-22

Teepie Architects
38 CAMERON ST., TORONTO, ONTARIO M5T 2H2