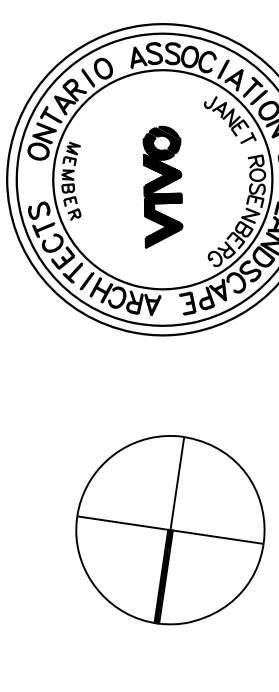


LEGEND

- PROPOSED TREE
- ▭ UNIT PAVING TYPE 'A'
- ▭ UNIT PAVING TYPE 'B'
- ▭ UNIT PAVING TYPE 'C'
- ▭ UNIT PAVING TYPE 'D'
- ▭ PLANTING BED
- ▭ HEDGE
- ▭ PRE-CAST CONCRETE BLOCK WALL
- PROPERTY LINE
- SPOT ELEVATION

ISSUE

- 1 2013-02-28 ISSUED FOR COORDINATION
- 2 2013-03-18 ISSUED FOR CLIENT REVIEW
- 3 2013-03-26 ISSUED FOR SITE PLAN APPROVAL
- 4 2014-01-10 ISSUED FOR PERMIT COORDINATION
- 5 2014-07-15 ISSUED FOR PERMIT COORDINATION
- 6 2014-07-15 ISSUED FOR PERMIT COORDINATION
- 7 2014-07-15 ISSUED FOR PERMIT COORDINATION
- 8 2014-08-19 ISSUED FOR COORDINATION



**Janet Rosenberg & Studio**  
 Landscape Architecture and Urban Design  
 148 Kennedy Avenue, Toronto, Ontario M6E 2S3 Canada  
 Tel: 416 666 6665 Fax: 416 666 5756 www.jrbs.com

**TRIDEL**  
 TORONTO COMMUNITY HOUSING CORPORATION

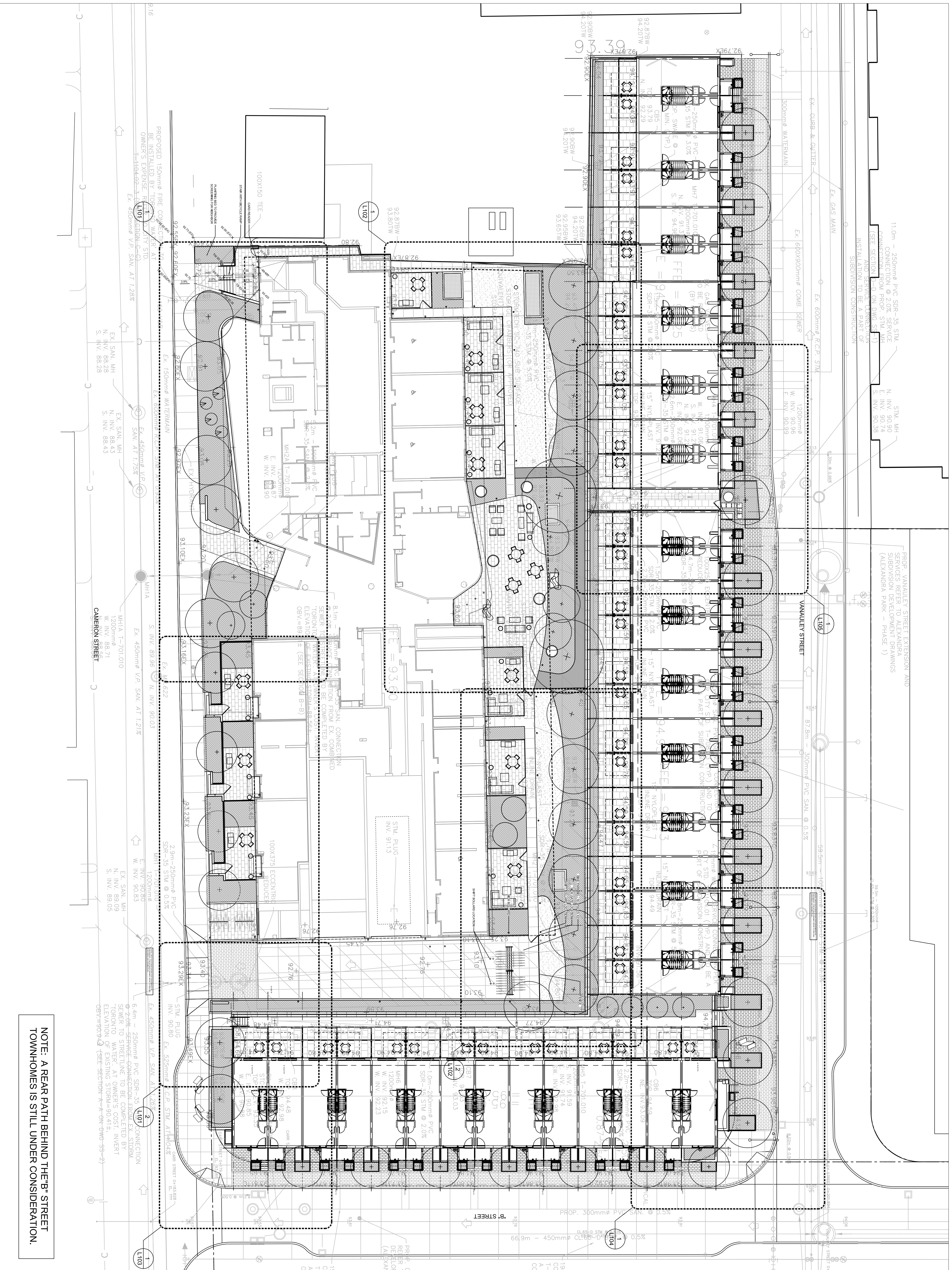
**ALEXANDRA PARK**  
 PHASE 1A

**LANDSCAPE LAYOUT PLAN - KEY PLAN**

SCALE: 1:200  
 DRAWN: JRS  
 CHECKED:  
 PROJECT NUMBER: 13-101  
 DRAWING DATE: 2013-02-28

**L100**

NOTE: A REAR PATH BEHIND THE 'B' STREET TOWNHOMES IS STILL UNDER CONSIDERATION.



PROP. VANAULEY STREET EXTENSION AND SERVICES REFER TO SEPARATE SUBDIVISION DEVELOPMENT DRAWINGS (ALEXANDRA PARK - PHASE 1)

PROPOSED 150mm FIRE COCKING BE INSTALLED BY TOP WATER AT OWNER'S EXPENSE REFER TO SEPARATE DEVELOPMENT DRAWINGS (ALEXANDRA PARK - PHASE 1)

6.4m - 250mm PVC SDR-35 CONNECTION TO STREETLINE TO BE COMPLETED BY TORONTO WATER. AT OWNER'S COST. INVERT ELEVATION OF EXISTING STORM=90.41T. (SEE SECTION A-A ON DWG-S3-2)