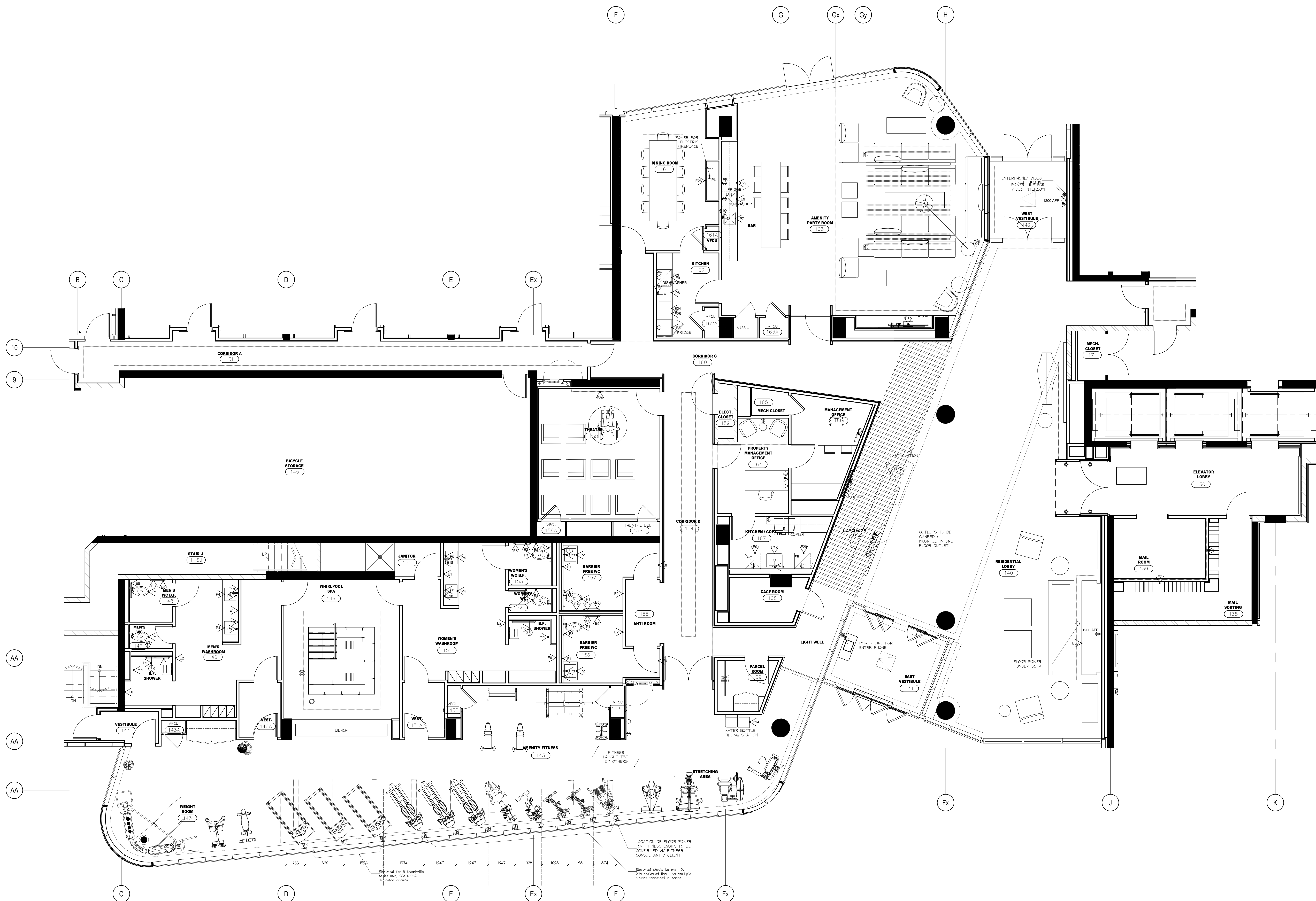


**DO NOT SCALE DRAWINGS.**

CONTRACTOR MUST VERIFY ALL DRAWINGS, DIMENSIONS, DETAILS AND SPECIFICATIONS, AND REPORT ANY DISCREPANCIES TO UNION 31 INC. BEFORE PROCEEDING WITH WORK. MATERIALS MAY NOT BE SUBSTITUTED WITHOUT WRITTEN APPROVAL FROM UNION 31 INC.  
ALL DRAWINGS AND SPECIFICATIONS ARE INSTRUMENTS OF SERVICE AND THE PROPERTY OF UNION 31 INC. WHICH MUST BE RETURNED AT THE COMPLETION OF THE WORK.

PRINTED: 15-JUN-15



NO	DATE	COMMENTS	INI
09	16 JUNE / 15	ISSUED FOR FINISH CARPENTRY	CB
08	11 JUNE / 15	SITE INSTRUCTION #1	CB
03	06 MAR / 15	ISSUED FOR TILE TENDER	AP
02	26 JAN / 15	ISSUED FOR TENDER	AP
01	22 AUG / 14	ISSUED FOR PERMIT	AP

**UNION 31**  
 UNION31 INC.  
 183 BATHURST STREET, STE. 201  
 TORONTO, ON, M5T 2R7, CANADA  
 TEL: 416-597-1576 FAX: 416-597-2139

PROJECT NAME:  
**ALEXANDRA PARK  
 MAIN BUILDING**  
 BLOCK 11  
 ON, Canada

PROJECT NO.: 13-949  
 DRAWINGS:  
**GROUND FLOOR  
 FURNITURE & POWER PLAN**

DATE STARTED: 07 AUG / 13  
 SCALE: 1 : 50  
 DRAWN BY: AP  
 APPROVED BY: KC

DRAWING NO.:  
**ID  
 1.1.2**

**1 FURNITURE & POWER PLAN**  
 GROUND FLOOR  
 SCALE 1:50

Electrical for 3 treadmills to be 100, 200 WATTs de-rated circuits  
 LOCATION OF FLOOR POWER FOR FITNESS EQUIP. TO BE CONSIDERED BY FITNESS CONSULTANT / CLIENT  
 Electrical should be one 100, 200 dedicated line with multiple outlets connected in series