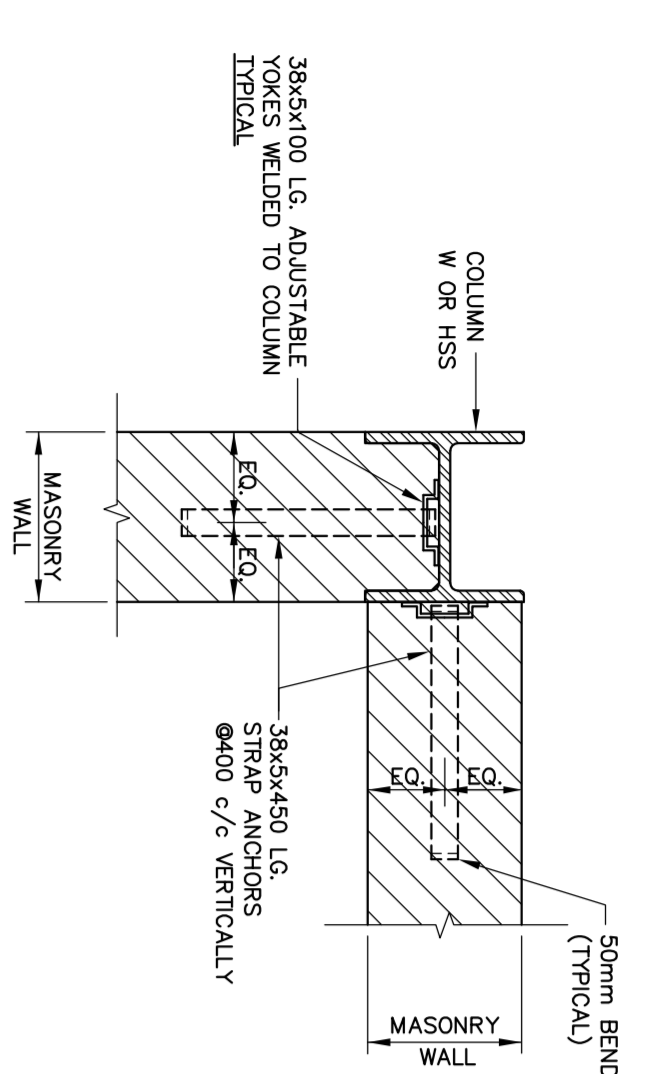


1100 TYPICAL DETAIL ANCHORAGE OF MASONRY WALL TO STEEL COLUMN

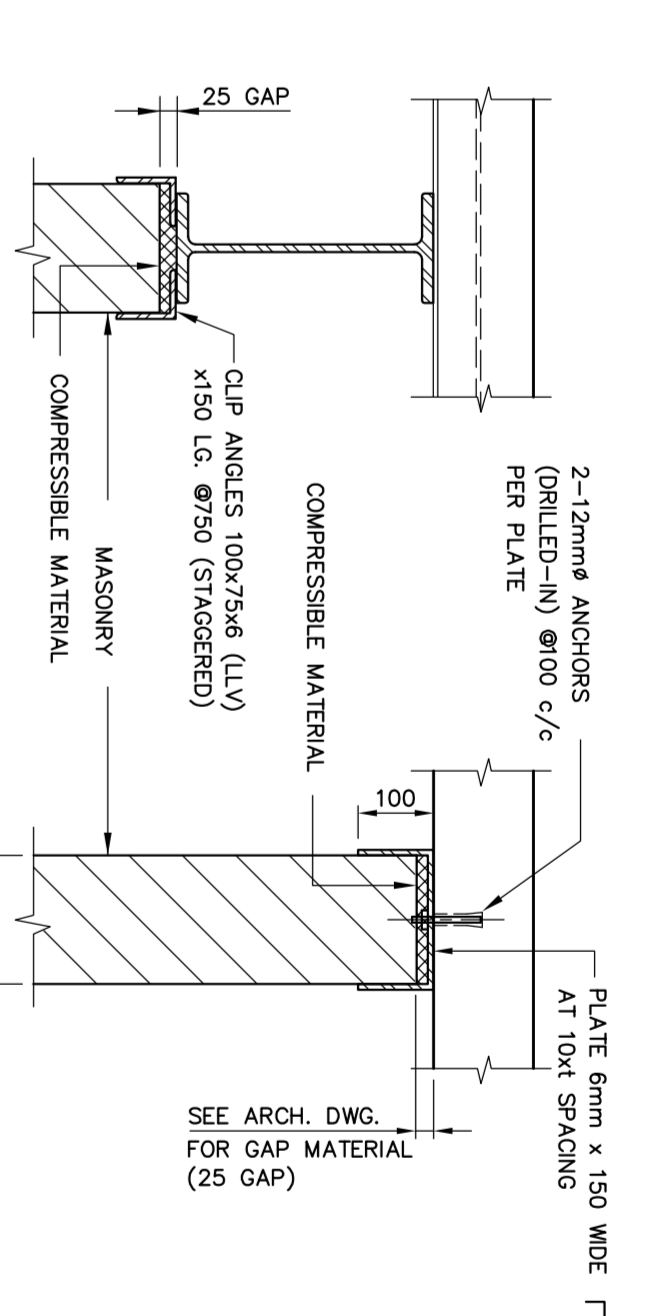


1103 TYPICAL STEEL LINTELS IN NON-LOAD BEARING MASONRY WALLS

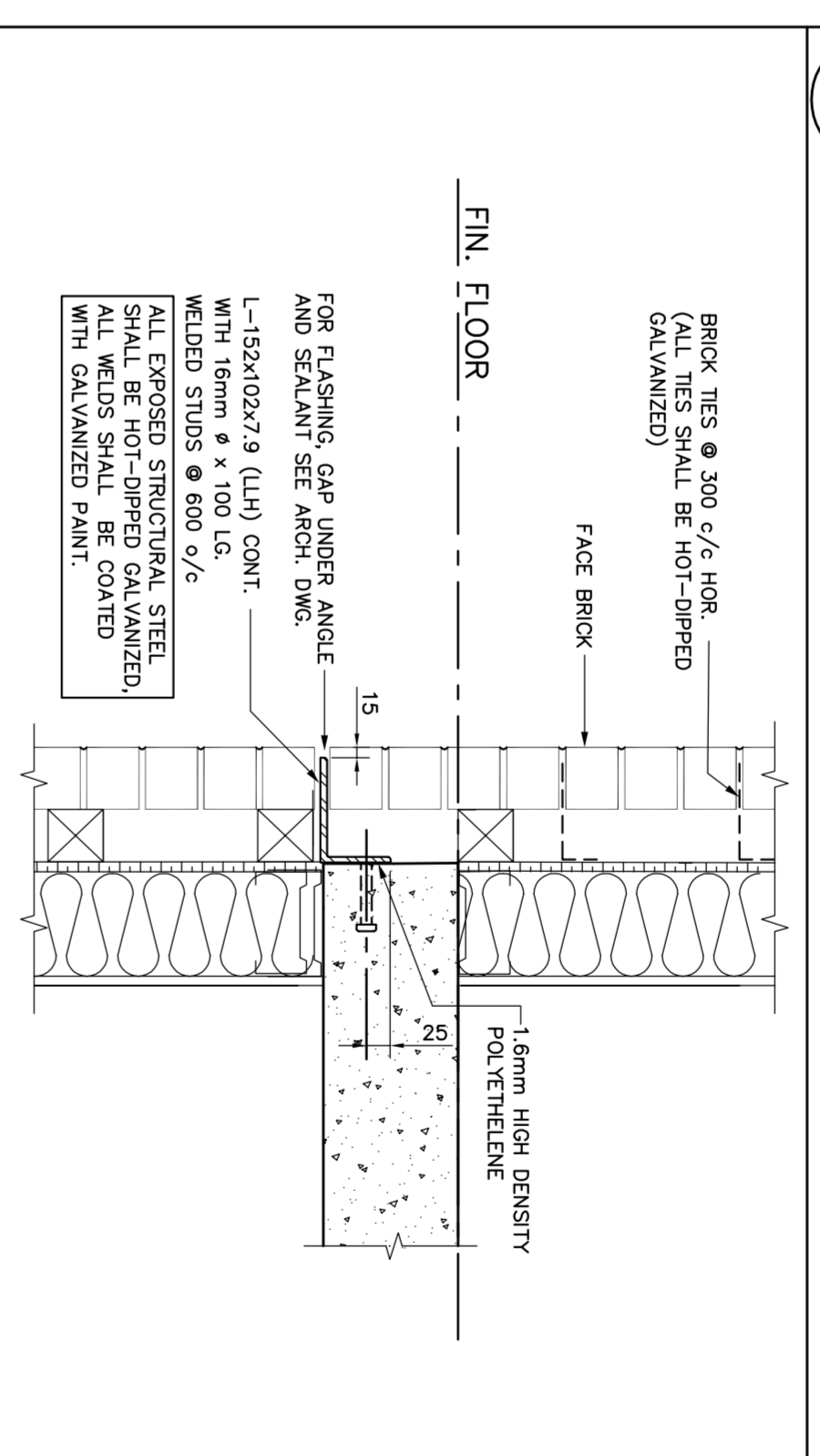
MAX CLEAR SPAN	280	280	300	318	368
1200	25 - 90x90x8	① L-90x90x8 ② L-125x80x8 (LLV)	35 - 90x90x8	① L-100x100x8 ② L-100x100x8 ③ L-90x90x8	① L-100x100x8 ② L-150x100x8 (LLV) ③ L-90x90x8
1800	25 - 100x90x8 (LLV)	① L-100x90x8 (LLV) ② L-125x125x8	35 - 100x90x8 (LLV)	① L-100x100x8 ② L-100x100x8 ③ L-100x90x8 (LLV)	① L-100x100x8 ② L-150x100x8 (LLV) ③ L-90x90x8
2400	25 - 125x90x8 (LLV)	① L-125x90x8 (LLV) ② L-125x125x10	35 - 125x90x8 (LLV)	① L-125x90x8 (LLV) ② L-125x90x8 (LLV) ③ L-125x90x8 (LLV)	① L-125x90x8 (LLV) ② L-150x100x8 (LLV) ③ L-100x100x8
3000	25 - 125x100x10 (LLV)	① L-150x100x10 (LLV) ② L-150x150x10	35 - 150x100x10 (LLV)	① L-150x100x10 (LLV) ② L-150x100x10 (LLV) ③ L-150x100x10 (LLV)	① L-150x100x10 (LLV) ② L-150x100x10 (LLV) ③ L-150x100x10 (LLV)

- NOTES:
1. FOR 150 WALL USE #2F 250 WALL ABOVE.
 2. MIN. END BEARING FOR LINTELS SHALL BE 150mm.
 3. BACK TO BACK ANGLES SHALL BE BOLTED OR WELDED TOGETHER WHEN CLEAR SPAN EXCEEDS 1800mm.
 4. ALL ANGLES SHALL BE HOT-DIPPED GALVANIZED IF EXPOSED TO WEATHER.
 5. PROVIDE L-90x90x10 WELDED TO STEEL COLUMN OR BOLTED TO CONCRETE COLUMN OR WALL.
 6. STRUCTURAL STEEL SHALL CONFORM TO CAN/CSA G40.21-04, 300W.

1106 TYPICAL LATERAL SUPPORT FOR NON-LOAD BEARING WALL



1107 TYPICAL SHELF ANGLE DETAIL



1102 LINTEL SCHEDULE

MAXIMUM CLEAR SPAN	BLOCK LINTEL	MAXIMUM CLEAR SPAN	STEEL LINTEL FOR EXTERIOR WALL
2000	FOR INTERIOR WALL 1-15 COMT. 90L BRICK	1800	90L BRICK L-102x102x8
2400	FOR INTERIOR WALL 2-15 COMT. 90L BRICK	2000	90L BRICK L-102x102x8 L-51x51x4.8
2400	FOR EXTERIOR & CAVITY WALL 2-15 COMT. 90L BRICK	2400	90L BRICK L-152x102x8 (LLV) L-51x51x4.8
3000	FOR EXTERIOR & CAVITY WALL 4-15 COMT. 90L BRICK	3000	90L BRICK L-203x102x13 (LLV) L-51x51x4.8

- NOTES:
1. MINIMUM END BEARING FOR LINTELS SHALL BE 200mm.
 2. CONCRETE FILL SHALL BE $f_c = 25$ MPa.
 3. PROVIDE TEMPORARY BRACING TO SUPPORT MASONRY OVER LINTEL DURING CONSTRUCTION.
 4. STRUCTURAL STEEL SHALL CONFORM TO CAN/CSA G40.21-04, 300W.

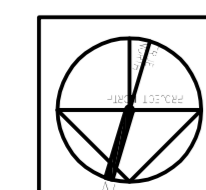
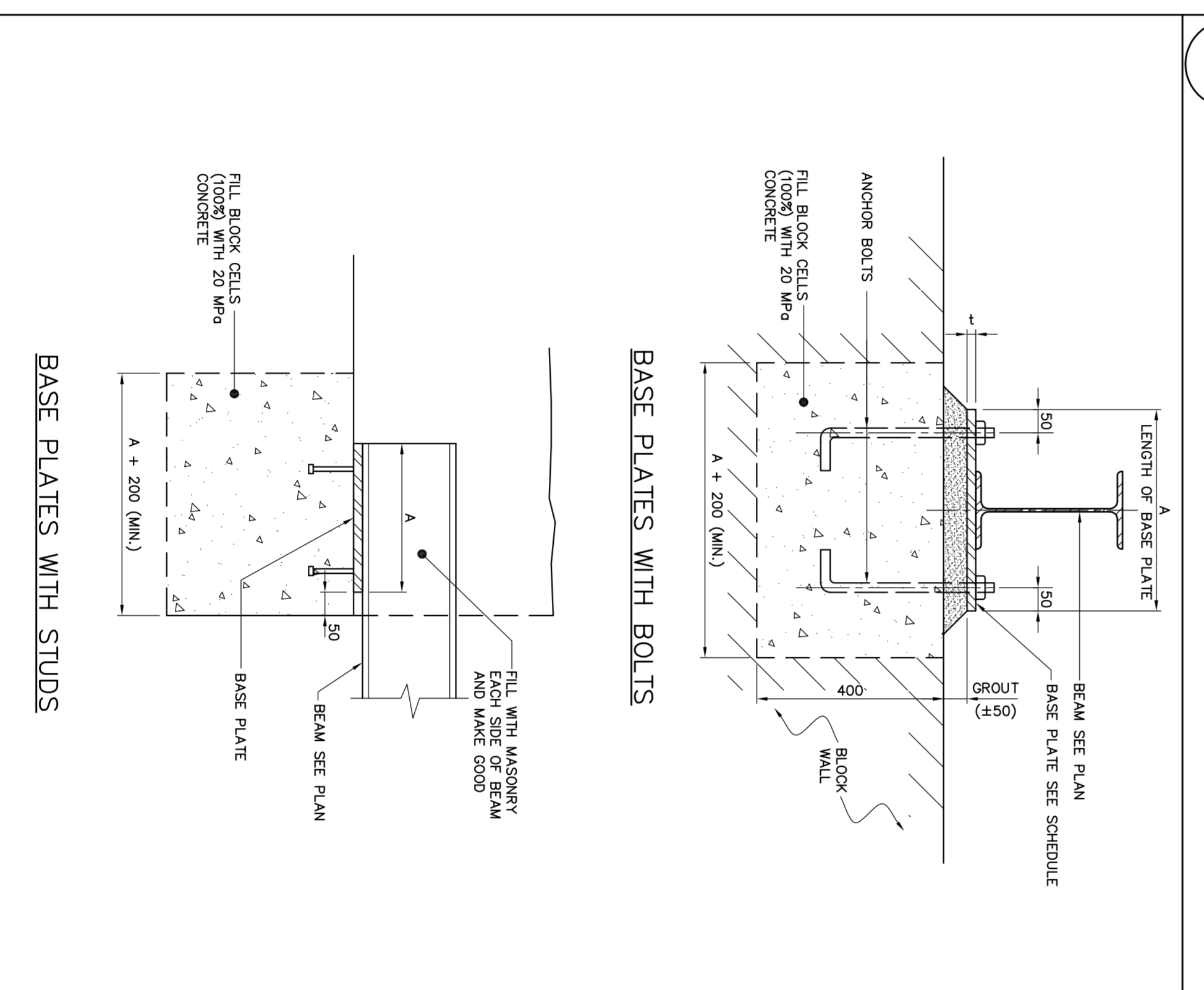
- NOTES:
1. MINIMUM END BEARING FOR LINTELS SHALL BE 150mm.
 2. ALL ANGLES SHALL BE HOT-DIPPED GALVANIZED.
 3. STRUCTURAL STEEL SHALL CONFORM TO CAN/CSA G40.21-04, 300W.

1104 STEEL LINTELS FOR NON-LOAD BEARING WALLS OF HOLLOW CONCRETE BLOCK (ANY AGGREGATE)

STEEL ANGLES CLEAR SPAN MAX.	140	140	180	240	280
1200	25 - 51x38x4 BL.L.V.	25 - 64x64x6.4	25 - 89x76x6.4 LL.V.	TL - 102x76x6.4 LL.H. TL - 127x76x6.4 LL.H.	35 - 89x76x6.4 LL.H.
1600	25 - 51x38x4 BL.L.V.	25 - 64x64x6.4	25 - 89x76x6.4 LL.V.	TL - 102x76x6.4 LL.H. TL - 127x76x6.4 LL.H.	35 - 89x76x6.4 LL.H.
2000	25 - 89x64x6.4 LL.V.	25 - 89x64x6.4 LL.V.	25 - 89x89x6.4 LL.V.	TL - 102x89x7.9 LL.H. TL - 127x76x7.9 LL.H.	35 - 89x76x6.4 LL.H.
2400	25 - 89x64x6.4 BL.L.V.	25 - 127x89x6.4 LL.V.	TL - 152x102x7.9 LL.V. TL - 127x127x7.9	35 - 127x89x6.4 LL.V.	35 - 127x89x6.4 LL.V.

- NOTES:
1. MINIMUM END BEARING FOR LINTELS SHALL BE 150mm.
 2. MINIMUM END BEARING FOR LINTELS SHALL BE 150mm.
 3. CONNECT ANGLES AT 680 mm e/e BY WELDING OR BOLTING FOR ANGLES WITH A TOTAL LENGTH OF 1800mm OR MORE.
 4. PROVIDE L-90x90x10 WELDED TO STEEL COLUMN OR BOLTED TO CONCRETE COLUMN OR WALL.
 5. ALL ANGLES SHALL BE HOT-DIPPED GALVANIZED IF EXPOSED TO WEATHER.

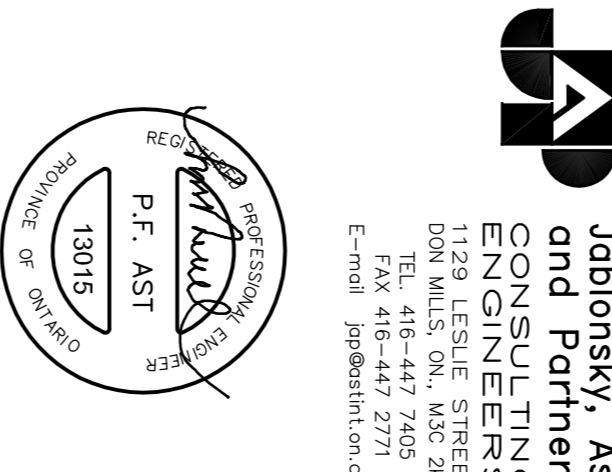
1105 DETAILS OF MASONRY BASE PLATES



ALEXANDRA PARK - BLOCK 11
TORONTO, ONTARIO

FIRST FLOOR ELEV. 90.00mm

DATE: 14/03/2014
DRAWN BY: H.W.
CHECKED BY: H.W.
DATE ISSUED: MARCH 2014



Jablonsky, Asi and Sons
ENGINEERS
1000 SHEPPARD AVENUE EAST
SUITE 1000
SCARBOROUGH, ONTARIO M1S 1T7
CANADA
TEL: 416-441-2777
FAX: 416-441-2778
E-MAIL: info@jablonsky.com