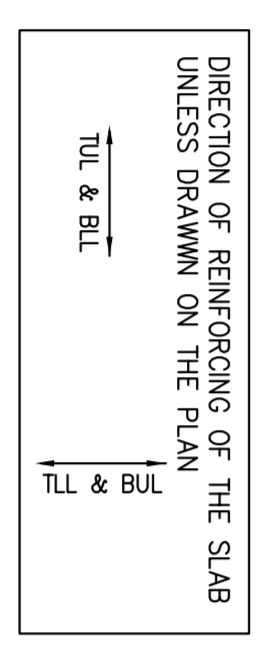


3RD FLOOR BEAM FRAMING PLAN

SCALE: 1 : 100

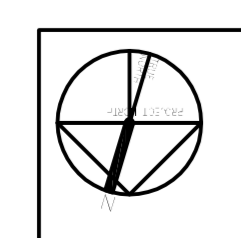
1. TOP OF SLAB IS AT ELEVATION AS SHOWN ON ARCH. DRAWINGS EXCEPT AS CROSSED AND NOTED ON PLAN.
2. CONCRETE STRENGTH AT 28 DAYS SHALL BE:
 - FOR WALLS AND COLUMNS SET SCHEDULE
 - FOR EXT. SLABS SET SCHEDULE
 - FOR INTERIOR SLABS 25 MPa
 - FOR BEAMS AND FLOOR OF SLAB 25 MPa
3. FLOOR SLABS ARE DESIGNED FOR FOLLOWING LOADING CONDITIONS:

STAIRS & BALCONIES	S1.0	LL
LODGERS & STORAGE	1.30 kPa	4.80 kPa
RESIDENTIAL	1.30 kPa	1.9 kPa
TOILETS	1.30 kPa	2.40 kPa
TERRACES	5.0 kPa	4.80 kPa
4. MINIMUM YIELD STRESS FOR REINFORCING STEEL SHALL BE 400 MPa.
5. TEMPERATURE REINFORCING FOR: 210 SLAB IS 108820L, 600 SLAB IS 208250L.
6. NO OPENINGS LARGER THAN 300mm x 300mm ARE ALLOWED IN SLAB OTHER THAN THOSE SHOWN ON DRAWINGS.
7. SEE TYPICAL DETAILS ON DRAWINGS S-101 TO S-103.
8. SET GENERAL NOTES ON DRAWING S-101.
9. REFER TO ARCH. DRAWINGS FOR SLOPES OF SLAB.
10. FOR COLUMN & WALL SCHEDULE SEE DRAWINGS S-101 TO S-106.
11. COORDINATE BEAM LENGTH AT DOOR OPENINGS WITH ARCH. DRAWINGS.
12. EXTEND TEMP. BENT TO END OF BALCONIES/OVERHANGS.
13. TOP BARS TERMINATING AT EDGE OF SLAB TO HAVE 180° HOOK.



3RD FLOOR BEAM SCHEDULE (fc' = 35MPa)

MARK	WIDTH	DEPTH	REINFORCEMENT		TOP SIZE	TYPE	SPACING EACH END	REMARKS
			BOTTOM COUNT	TOP COUNT				
BM-1	600	600	4-20	2-20	10	198200, Ø400	ADD 1-15HEF	
BM-2	600	600	7-25	4-20	10	198200, Ø400	ADD 1-15HEF	
BM-3	800	600	9-25	6-20	10	1985, 99170, Ø290	ADD 1-15HEF	
BM-4	800	600	9-25	5-20	10	1985, 148165, Ø300	ADD 1-15HEF	
BM-5	800	600	6-25	5-20	10	19815, 58230, Ø300	ADD 1-15HEF	
BM-6	800	600	4-20	2-20	10	198200, Ø400	ADD 1-15HEF	
BM-7	800	600	6-20	6-20	10	19850, Ø300	ADD 1-15HEF	
BM-8	800	600	6-25	6-20	10	1970, 148140, Ø240	ADD 1-15HEF	



ALEXANDRA PARK - BLOCK 11
TORONTO, ONTARIO

Joblonsky, Asd
and Partners
ENGINEERS
200 BAYVIEW AVE. SUITE 200
SCARBOROUGH, ONTARIO M1S 5B5
Tel: 416-441-2727
Fax: 416-441-2727
E-mail: joblonsky@jap.ca

P.F. ASST
Professional Engineer
No. 13007
Ontario

FIRST FLOOR ELEV. 80.00m

No.	Revised/Issued	Date
1	Issued for Construction	2014/04/01
2	Revised for Construction	2014/04/01
3	Revised for Construction	2014/04/01
4	Revised for Construction	2014/04/01
5	Revised for Construction	2014/04/01
6	Revised for Construction	2014/04/01
7	Revised for Construction	2014/04/01
8	Revised for Construction	2014/04/01
9	Revised for Construction	2014/04/01
10	Revised for Construction	2014/04/01
11	Revised for Construction	2014/04/01
12	Revised for Construction	2014/04/01
13	Revised for Construction	2014/04/01
14	Revised for Construction	2014/04/01
15	Revised for Construction	2014/04/01
16	Revised for Construction	2014/04/01