

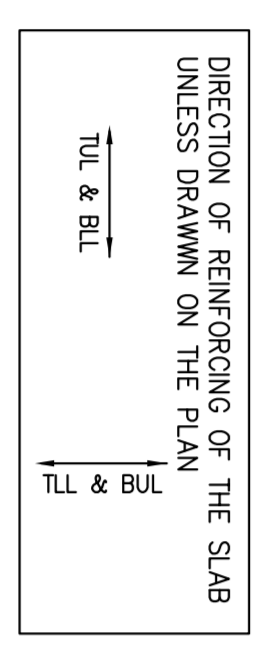


6TH FLOOR FRAMING PLAN

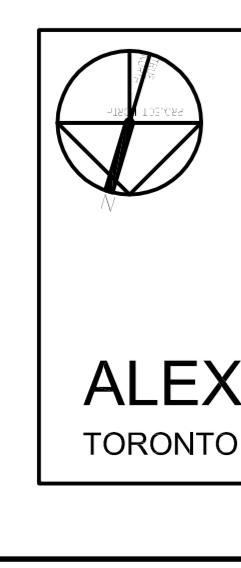
SCALE 1:100

- TOP OF SLAB IS AT ELEVATION AS SHOWN ON ARCH. DRAWINGS EXCEPT AS CROSSED AND NOTED ON PLAN.
- CONCRETE STRENGTH AT 28 DAYS SHALL BE:
 - FOR WALLS AND COLUMNS SEE SCHEDULE
 - FOR EXT. SLABS 35 MPa
 - FOR INTERIOR SLABS 35 MPa
 - FOR BEAMS 35 MPa
 - CONCRETE EXPOSED TO ELEMENTS SHALL BE 35 MPa WITH 6% TO BE STRIPPED MK.
- FLOOR SLABS ARE DESIGNED FOR FOLLOWING LOADING CONDITIONS:

S.L.O.	S.L.O.	U.L.L.
STAIRS & BALCONIES	0.50 MPa	4.80 MPa
LOCKERS & STORAGE	1.30 MPa	4.80 MPa
RESIDENTIAL	1.30 MPa	1.9 MPa
TOILETS	1.30 MPa	2.40 MPa
TERRACES	5.0 MPa	4.80 MPa



- MINIMUM YIELD STRESS FOR REINFORCING STEEL SHALL BE 400 MPa.
- TEMPERATURE REINFORCING FOR: 200 SLAB IS 1000X; 400 SLAB IS 1000X.
- NO OPENINGS LARGER THAN 300mm x 300mm ARE ALLOWED IN SLAB OTHER THAN THOSE SHOWN ON DRAWINGS.
- SEE TYPICAL DETAILS ON DRAWINGS S-001 TO S-005.
- SEE GENERAL NOTES ON DRAWINGS S-001.
- REFER TO ARCH. DRAWINGS FOR SLOPES OF SLAB.
- FOR COLUMN & WALL SCHEDULE SEE DRAWINGS S-301 TO S-306.
- EXTEND TEMP. REIN. TO END OF BALCONIES/OVERHANGS.
- TOP BARS TERMINATING AT EDGE OF SLAB TO HAVE 180° HOOK.



ALEXANDRA PARK - BLOCK 11
TORONTO, ONTARIO

FIRST FLOOR ELEV. 80.00m

NO.	REVISION / COMMENTS	DATE
1	ISSUED FOR PERMIT	2014.03.04
2	REVISED FOR COMMENTS	2014.03.10
3	REVISED FOR COMMENTS	2014.03.10
4	REVISED FOR COMMENTS	2014.03.10
5	REVISED FOR COMMENTS	2014.03.10
6	REVISED FOR COMMENTS	2014.03.10
7	REVISED FOR COMMENTS	2014.03.10
8	REVISED FOR COMMENTS	2014.03.10
9	REVISED FOR COMMENTS	2014.03.10
10	REVISED FOR COMMENTS	2014.03.10
11	REVISED FOR COMMENTS	2014.03.10
12	REVISED FOR COMMENTS	2014.03.10
13	REVISED FOR COMMENTS	2014.03.10
14	REVISED FOR COMMENTS	2014.03.10
15	REVISED FOR COMMENTS	2014.03.10
16	REVISED FOR COMMENTS	2014.03.10

Jablonsky, Ash & Partners
ENGINEERS
200 W. BAYVIEW AVE., SUITE 200
SCARBOROUGH, ONTARIO M2H 3B5
Tel: 416-444-2777
Fax: 416-444-2777
E-mail: jablonsky@jap.ca