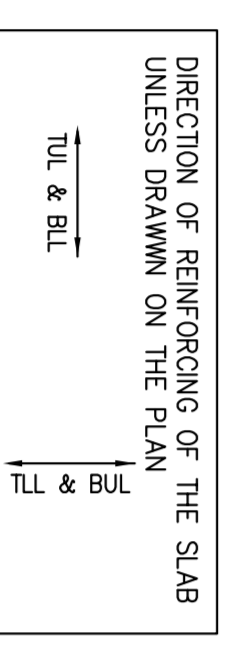


4TH FLOOR FRAMING PLAN

SCALE 1:100

1. TOP OF SLAB IS AT ELEVATION AS SHOWN ON ARCH. DRAWINGS EXCEPT AS CROSSED AND NOTED ON PLAN.
2. CONCRETE STRENGTH AT 28 DAYS SHALL BE:
 - FOR WALLS AND COLUMNS SEE SCHEDULE FOR EXT. SLABS
 - FOR INT. SLABS 35 MPa
 - FOR DECKING 25 MPa
3. FLOOR SLABS ARE DESIGNED FOR FOLLOWING LOADING CONDITIONS:

STAIRS & BALCONIES	S.U.L.	L.L.
LOOKERS & STORAGE *	0.50 kPa	4.80 kPa
RESIDENTIAL	1.50 kPa	1.9 kPa
TOILETS	1.50 kPa	2.40 kPa
TERRACES	5.0 kPa	4.80 kPa

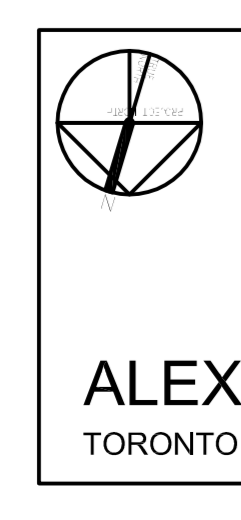


4. MINIMUM YIELD STRESS FOR REINFORCING STEEL SHALL BE 400 MPa.
5. TENSILE TIME REINFORCING FOR: 200 SLAB IS 100%20.
6. NO OPENINGS LARGER THAN 300mm x 300mm ARE ALLOWED IN SLAB OTHER THAN THOSE SHOWN ON DRAWINGS.
7. SEE TYPICAL DETAILS ON DRAWINGS S-001 TO S-005.
8. SEE GENERAL NOTES ON DRAWING S-001.
9. REFER TO ARCH. DRAWINGS FOR STAIRS OF SLAB.
10. FOR COLUMN & WALL SCHEDULE SEE DRAWINGS S-201 TO S-208.
11. CORONAITE BEAM DEPTH AT DOOR OPENINGS WITH ARCH. DRAWINGS.
12. EXTEND TEMP. REINFC. TO END OF BALCONIES/OVERHANGS.
13. TOP BARS TERMINATING AT EDGE OF SLAB TO HAVE 180° HOOK.

FIRST FLOOR ELEV. 80.00m

NO.	REVISION	DATE
1	ISSUED FOR PERMIT	2014/03/04
2	REVISED FOR COMMENTS	2014/03/04
3	REVISED FOR COMMENTS	2014/03/04
4	REVISED FOR COMMENTS	2014/03/04
5	REVISED FOR COMMENTS	2014/03/04
6	REVISED FOR COMMENTS	2014/03/04
7	REVISED FOR COMMENTS	2014/03/04
8	REVISED FOR COMMENTS	2014/03/04
9	REVISED FOR COMMENTS	2014/03/04
10	REVISED FOR COMMENTS	2014/03/04
11	REVISED FOR COMMENTS	2014/03/04
12	REVISED FOR COMMENTS	2014/03/04
13	REVISED FOR COMMENTS	2014/03/04
14	REVISED FOR COMMENTS	2014/03/04
15	REVISED FOR COMMENTS	2014/03/04
16	REVISED FOR COMMENTS	2014/03/04

Johlborsky, Asif
and Partners
ENGINEERS
 6700 SHEPPARD AVENUE EAST
 SUITE 200
 SCARBOROUGH, ONTARIO M1S 4T7
 TEL: 416-441-2777
 FAX: 416-441-2777
 E-MAIL: JOHNBORSKY@JPE.CA



ALEXANDRA PARK - BLOCK 11
 TORONTO, ONTARIO

DATE: 2014/03/04
 DRAWN BY: [Name]
 CHECKED BY: [Name]
 DATE: 2014/03/04