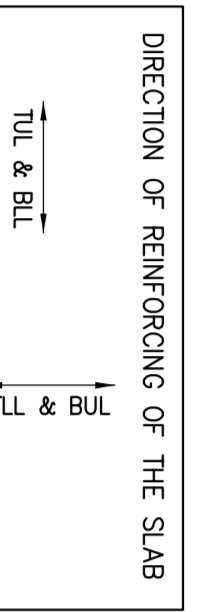


2ND FLOOR FRAMING PLAN

- SCALE 1 : 100
- TOP OF SLAB IS AT ELEVATION AS SHOWN ON ARCH. DRAWINGS EXCEPT AS NOTED ON PLAN.
 - CONCRETE STRENGTH AT 28 DAYS SHALL BE:
 - FOR WALLS AND COLUMNS SEE SCHEDULE FOR EXISTING SLABS 35 MPa
 - FOR EXISTING SLABS 35 MPa
 - FOR PICK-UP SLABS 35 MPa
 - CONCRETE EXPOSED TO ELEMENTS SHALL BE 35 MPa WITH SET TO DET ENHANCED AIR.
 - FLOOR SLABS ARE DESIGNED FOR FOLLOWING LOADING CONDITIONS:
 - STAIRS & BALCONIES 0.50 kPa
 - LOCKERS & STORAGE 1.50 kPa
 - RESIDENTIAL 1.50 kPa
 - TOILETS 1.50 kPa
 - TERRACES 0.50 kPa
 - MINIMUM YIELD STRESS FOR REINFORCING STEEL SHALL BE 400 MPa.
 - TEMPERATURE REINFORCING FOR : 200 SLAB IS 100% 500 SLAB IS 100% 700 SLAB IS 200% 0.
 - NO OPENINGS LARGER THAN 300mm x 300mm ARE ALLOWED IN SLAB OTHER THAN THOSE SHOWN ON DRAWINGS.
 - SEE GENERAL NOTES ON DRAWINGS S-001 TO S-006.
 - REFER TO ARCH. DRAWINGS FOR SIZES OF SLAB.
 - FOR COLUMN & WALL SCHEDULE SEE DRAWINGS S-010 TO S-016.
 - COMPARTMENT BEAM DEPTH AT DOOR OPENINGS WITH ARCH. DRAWINGS.
 - EXTING TEMP REIN. AT END OF BALCONIES/OVERHANGS.
 - TOP BARS TERMINATING AT EDGE OF SLAB TO HAVE 180° HOOK.

LOADS & BALCONIES	SLAB	LL
0.50 kPa	0.50 kPa	4.80 kPa
1.50 kPa	1.50 kPa	4.80 kPa
1.50 kPa	1.50 kPa	1.90 kPa
1.50 kPa	1.50 kPa	2.40 kPa
0.50 kPa	0.50 kPa	4.80 kPa

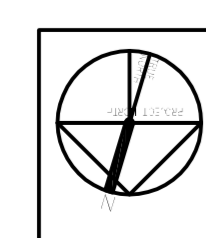


2ND FLOOR BEAM SCHEDULE (fc' = 35MPa)

MARK	WIDTH	DEPTH	REINFORCEMENT		STRIPUPS		REMARKS
			BOTTOM CONT.	TOP CONT.	SIZE	EACH END	
BM-1	1400	700	12-25	6-20	10	10	ADD 1-15HEF
BM-2	1200	700	8-20	5-20	10	10	100% 180% 0270
BM-3	1200	700	8-20	5-20	10	10	100% 180% 0270
BM-4	800	700	5-25	4-20	15	15	ADD 1-15HEF
BM-5	800	700	5-20	4-20	15	15	100% 100% 0270
BM-6	800	700	4-25	4-20	10	10	ADD 1-15HEF
BM-7	800	700	4-20	4-20	10	10	100% 100% 0270
BM-8	800	700	7-35	7-30	15	15	ADD 1-15HEF
BM-9	800	700	5-20	7-30	15	15	100% 210% 0270
BM-10	800	700	6-25	6-30	15	15	ADD 1-15HEF
BM-11	800	700	6-25	6-30	15	15	100% 100% 0270
BM-12	800	700	6-25	6-30	15	15	ADD 1-15HEF
BM-13	800	700	6-25	6-30	15	15	100% 100% 0270
BM-14	800	700	6-25	6-30	15	15	ADD 1-15HEF
BM-15	800	700	6-25	6-30	15	15	100% 100% 0270
BM-16	800	700	6-25	6-30	15	15	ADD 1-15HEF
BM-17	800	700	6-25	6-30	15	15	100% 100% 0270
BM-18	800	700	6-25	6-30	15	15	ADD 1-15HEF
BM-19	800	700	6-25	6-30	15	15	100% 100% 0270
BM-20	800	700	6-25	6-30	15	15	ADD 1-15HEF
BM-21	1000	700	6-25	6-30	15	15	100% 100% 0270
BM-22	1000	700	6-25	6-30	15	15	ADD 1-15HEF
BM-23	800	700	6-25	6-30	15	15	100% 100% 0270
BM-24	800	700	6-25	6-30	15	15	ADD 1-15HEF
BM-25	800	700	6-25	6-30	15	15	100% 100% 0270
BM-26	800	700	6-25	6-30	15	15	ADD 1-15HEF

2ND FLOOR BEAM SCHEDULE (fc' = 35MPa)

MARK	WIDTH	DEPTH	REINFORCEMENT		STRIPUPS		REMARKS
			BOTTOM CONT.	TOP CONT.	SIZE	EACH END	
BM-27	1300	1000	3-25	8-30	15	15	ADD 1-15HEF
BM-28	800	700	8-25	6-20	15	15	100% 100% 0270
BM-29	800	700	8-25	6-20	15	15	ADD 1-15HEF
BM-30	800	700	8-25	6-20	15	15	100% 100% 0270
BM-31	800	700	8-25	6-20	15	15	ADD 1-15HEF
BM-32	800	700	10-30	6-20	15	15	100% 100% 0270
BM-33	800	700	10-30	6-20	15	15	ADD 1-15HEF
BM-34	800	700	10-30	6-20	15	15	100% 100% 0270
BM-35	800	700	14-35	8-20	15	15	ADD 1-15HEF
BM-36	1500	700	14-35	8-20	15	15	100% 100% 0270
BM-37	1300	700	9-25	6-20	15	15	ADD 1-15HEF
BM-38	1500	700	9-25	6-20	15	15	100% 100% 0270
BM-39	1300	700	9-25	6-20	15	15	ADD 1-15HEF
BM-40	700	700	4-25	4-20	10	10	100% 100% 0270
BM-41	700	700	4-25	4-20	10	10	ADD 1-15HEF
BM-42	700	700	4-25	4-20	10	10	100% 100% 0270
BM-43	800	700	6-20	6-20	15	15	ADD 1-15HEF
BM-44	800	700	6-20	6-20	15	15	100% 100% 0270
BM-45	800	700	6-20	6-20	15	15	ADD 1-15HEF
BM-46	800	700	6-20	6-20	15	15	100% 100% 0270
BM-47	1000	700	4-25	4-20	15	15	ADD 1-15HEF
BM-48	800	800	13-35	7-30	15	15	100% 100% 0270
BM-49	800	800	13-35	7-30	15	15	ADD 1-15HEF
BM-50	800	800	13-35	7-30	15	15	100% 100% 0270
BM-51	200	800	7-20	7-20	15	15	ADD 1-15HEF
BM-52	1300	500	8-25	5-20	10	10	ADD 1-15HEF



ALEXANDRA PARK - BLOCK 11
TORONTO, ONTARIO

FIRST FLOOR ELEV. 80.00m

NO.	REVISION	DATE
1	ISSUED FOR PERMIT	2015-07-29
2	REVISION FOR COMMENTS	2015-08-04
3	REVISION FOR COMMENTS	2015-08-11
4	REVISION FOR COMMENTS	2015-08-18
5	REVISION FOR COMMENTS	2015-08-25
6	REVISION FOR COMMENTS	2015-09-01
7	REVISION FOR COMMENTS	2015-09-08
8	REVISION FOR COMMENTS	2015-09-15
9	REVISION FOR COMMENTS	2015-09-22
10	REVISION FOR COMMENTS	2015-09-29

Jablonsky, Asif Partners ENGINEERS
11100 SHEPPARD AVENUE EAST
SUITE 100
MARKHAM, ONTARIO L3R 9V7
Tel: 416-444-2727
Fax: 416-444-2727
E-mail: jablonsky@jap.com

P.E. ASIF
Professional Engineer
No. 13037
Ontario