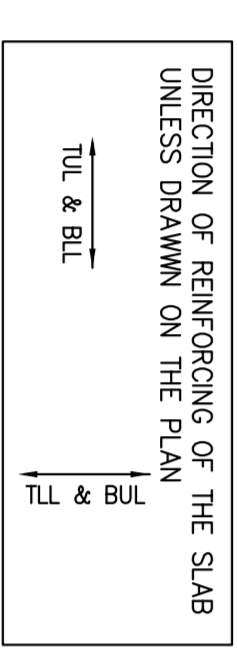


**11TH FLOOR FRAMING PLAN**

SCALE 1 : 100

1. TOP OF SLAB IS AT ELEVATION AS SHOWN ON ARCH. DRAWINGS EXCEPT AS EXPRESSED AND NOTED ON PLAN.
2. CONCRETE STRENGTH AT 28 DAYS SHALL BE:
  - FOR WALLS AND COLUMNS ..... SET SCHEDULE
  - FOR INTERIOR SLABS ..... 25 MPa
  - FOR BEAMS ..... 35 MPa
 CONCRETE EXPOSED TO ELEMENTS SHALL BE 35 MPa WITH 4% TO BE EXPOSED AIR.
3. FLOOR SLABS ARE DESIGNED FOR FOLLOWING LOADING CONDITIONS:
 

	S.I.D.	L.L.
STAIRS & BALCONIES	0.50 kPa	4.80 kPa
LOCKERS & STORAGE	1.20 kPa	4.80 kPa
RESIDENTIAL	1.30 kPa	1.9 kPa
TOILETS	1.30 kPa	2.40 kPa
TERRACES	5.0 kPa	4.80 kPa



4. MINIMUM YIELD STRESS FOR REINFORCING STEEL SHALL BE 400 MPa.
5. TEMPERATURE REINFORCING FOR : 200 SLAB IS 100%.
6. NO OPENINGS LARGER THAN 300mm x 300mm ARE ALLOWED IN SLAB OTHER THAN THOSE SHOWN ON DRAWINGS.
7. SET TYPICAL DETAILS ON DRAWINGS S-201 TO S-208.
8. SET GENERAL NOTES ON DRAWINGS S-201.
9. REFER TO ARCH. DRAWINGS FOR SLOPES OF SLAB.
10. FOR COLUMN & WALL SCHEDULE SEE DRAWINGS S-201 TO S-206.
11. COORDINATE BEAM DEPTH AT DOOR OPENINGS WITH ARCH. DRAWINGS.
12. EXTEND TEMP. REIN. TO END OF BALCONIES/OVERHANGS.
13. TOP BARS REMAINING AT EDGE OF SLAB TO HAVE 180° HOOK.

**ALEXANDRA PARK - BLOCK 11**  
TORONTO, ONTARIO

NO.	REVISION	DATE
1	ISSUED FOR PERMIT	2014.03.04
2	REVISIONS	2014.03.04
3	REVISIONS	2014.03.04
4	REVISIONS	2014.03.04
5	REVISIONS	2014.03.04
6	REVISIONS	2014.03.04
7	REVISIONS	2014.03.04
8	REVISIONS	2014.03.04
9	REVISIONS	2014.03.04
10	REVISIONS	2014.03.04
11	REVISIONS	2014.03.04
12	REVISIONS	2014.03.04
13	REVISIONS	2014.03.04
14	REVISIONS	2014.03.04
15	REVISIONS	2014.03.04
16	REVISIONS	2014.03.04

**FIRST FLOOR ELEV. 80.00m**

**Jablonsky, Asif**  
Civil Engineer  
Professional Engineer  
Ontario License No. 2002-2003  
P. Eng. No. 44844-2777  
E-mail: jablonsky@jce.ca

**Ontario Professional Engineers**  
100 King Street West, Suite 2000  
Toronto, Ontario M5X 1C4  
Tel: 416-593-9300  
Fax: 416-593-9301  
www.opec.ca

**Professional Engineer**  
P. Eng. No. 44844-2777  
E-mail: jablonsky@jce.ca