

GENERAL AREA CIRCUITING - TABLE #1

LIGHTING FIXTURE LOCATION	CCT. #
F2 TO F1 - EXIT SIGNS	E-1
G/F TO MPH - EXIT SIGNS	E-3
MPH - EXIT SIGNS	ER-1
STAIR 'A' (F2 TO G/F)	E-5
STAIR 'B' (F2 TO G/F)	E-1
STAIR 'J' (G/F TO 4/F)	E-9
STAIR 'J' (B/F TO 3/F)	E-11
STAIR 'G' (G/F TO 14/F)	E-13
STAIR 'F' (G/F TO 14/F)	E-15
STAIR 'K' (14/F TO MPH) 4 MPH	ER-3ER-5R-11R-19
(G/F)	E-2E-4E-6E-10E-10E-12E-14E-16
(G/F)	B1-2B1-4B1-6B1-8B1-10B1-12B1-14B1-16
(G/F)	B19B1-20B1-22B1-24B1-26B1-28B1-30
CORRIDOR (2/F 4 3/F)	E-24
CORRIDOR (4/F 4 5/F)	E-26
CORRIDOR (6/F 4 1/F)	E-28
CORRIDOR (8/F TO 11/F)	E-30
CORRIDOR (12/F TO 14/F)	E-32
CORRIDOR 4 LOCKER (2/F)	B-46
CORRIDOR (3/F)	B-48
CORRIDOR (4/F)	B-50
CORRIDOR (5/F 4 6/F)	B-52
CORRIDOR (1/F 4 2/F)	B-54
CORRIDOR (3/F TO 11/F)	B-56
CORRIDOR (12/F TO 14/F)	B-58
ELEVATOR CAB	ER-6, ER-8ER-10
EXTERIOR SITE	E1-E11-2E11-5E1-2E11-4E1-6
RECEPTACLE LOCATION	CCT. #
ELEC. N. CLOSET (G/F TO 9/F)	B-2
ELEC. N. CLOSET (2/F TO 9/F)	B-4
ELEC. N. CLOSET (10/F TO 14/F)	B-6
ELEC. N. CLOSET (22/F TO 32/F)	B-8
ELEV. LOBBY (F2 TO 8/F)	B-10
CORRIDOR (2/F TO 8/F)	B-12B-14B-16B-18B-20B-22B-24
CORRIDOR (2/F TO 5/F)	B-26B-28
ELEV. LOBBY (9 TO 14/F)	B-30
CORRIDOR (9/F TO 14/F)	B-32B-34B-36B-38
STAIR A (G/F) 4 (3/F,6/F,9/F)	B-40
STAIR F (14/F,11/F,8/F,5/F,2/F)	B-42
STAIR H (14/F,11/F,8/F,5/F,2/F)	B-44
STAIR 'K' 4 MPH	R-2

- KEY NOTES - PARKING:**
- FOR CIRCUITING, REFER TO TABLE #1.
 - PROVIDE ALARM SPEAKER SMOKE DETECTOR AND RECEPTACLE AT EVERY THIRD FLOOR STAIR WELL STARTING FROM TOP FLOOR, AS PER TO DUG. E-32 FOR FIRE ALARM RISER DIAGRAM.
 - SANITARY TRAPS ARE TO BE HEAT TRACED BY DIV. 16. CONNECT TO GFI CIRCUIT AS SHOWN.
 - SANITARY AND STORM LINE IN PARKING FLOORS ARE TO BE HEAT TRACED WITH SELF REGULATING CABLE BY DIV. 16. CONNECT TO GFI CIRCUIT AS SHOWN.
 - ACTIVATION OF FIRE ALARM SYSTEM SHALL ACTIVATE THE SUPPLY FANS. WHEN THE DUCT TYPE SMOKE DETECTOR IS ACTIVATED, THE ASSOCIATED SUPPLY FAN SHALL BE TURNED OFF. WHEN THE MOTORIZED DAMPER IS ACTIVATED, THE DOOR SHALL BE RELEASED AND OPENED.
 - ALLOCATE 2, 120V, 15A, CCTS FOR MECHANICAL CONTROL. CONTRACTOR SHALL COORDINATE WITH DIV. 15 FOR EXACT LOCATION.
 - F.H.G. IN UNHEATED AREAS ARE TO BE HEAT TRACED BY DIV. 16. CONNECT TO GFI CIRCUIT AS SHOWN.
 - CONTROL PANEL FOR SANITARY PUMP AND STORM PUMP BY DIV. 15. POWER CONNECTION UP TO CONTROL PANELS SHALL BE INSTALLED BY DIV. 16. CONTRACTOR THIS CONTRACTOR SHALL SUPPLY UNDER SLAB CONDUITS FOR POWER AND CONTROL WIRING FROM CONTROL PANELS TO SANITARY PUMP FIT.
 - INSTALL 3/4" CONDUIT C/W WIRING AND PULL STRING FROM SANITARY AND STORM PUMP CONTROL PANEL TO CONCOURSE DESK AND CACF FOR HIGH WATER ALARM SYSTEM.
 - ELECTRICAL CONTRACTOR SHALL PROVIDE A RECEPTACLE WITH CONFIGURATION (NEMA 6-50R) C/W 1-1/2" CONDUIT TO 120/208V PANEL 'FIVE' WITH METER FOR PHEV (PLUG-IN HYBRID ELECTRIC VEHICLES). 5 DEDICATED 1ø, 208V, 40A CIRCUITS.
 - EMERGENCY LIGHT FIXTURES IN LOCKERS, STORAGE, UTILITY AND SERVICE ROOMS SHALL BE CONNECTED TO BOTH NORMAL AND EMERGENCY POWER AS PER DETAIL #28 OF DUG. E-35.
 - REFER TO ID DRAWINGS FOR ELEVATOR LOBBY LIGHTING FIXTURES MOUNTING DIMENSIONS.
 - PROVIDE ONE ZONE FOR CO MONITORING AT EACH PARKING LEVEL, I.E. ACTIVATION OF ANY CO SENSOR IN PARKING LEVEL SHALL TRIGGER ALL EXHAUST FANS TO START IN THE PARKING LEVEL.
 - INTERCOM STATION COMPLETE WITH TICKET DISPENSER.
 - 1-APC SMART-UPS 150VA WITH LCD (120V) FOR EACH INTERCOM.
 - 1-5000VA UPS (APC SMART UPS CAT # 90A5000R5TXPR) IN THE SECURITY ROOM WITH TECH. SPEC. AS BELOW

OUTPUT
 OUTPUT POWER CAPACITY 4000 WATT / 5000 VA NOMINAL OUTPUT VOLTAGE 120V, 208V EFFICIENCY AT FULL LOAD 95.0% OUTPUT CONNECTIONS

(12) NEMA 5-20R NEMA 5-20R
 (2) NEMA L6-20R NEMA L6-20R
 (1) NEMA L6-30R NEMA L6-30R

INPUT
 NOMINAL INPUT VOLTAGE 208V
 INPUT CONNECTIONS
 NEMA L6-30P NEMA L6-30P

(8) DIV. 16 TO SUPPLY, DIV. 15 TO INSTALL HOSPITAL PLUS GRADE MUFFLER ON THE GENERATOR EXHAUST. MUFFLER AND EXHAUST PIPE SHOULD BE ISOLATED FROM THE BUILDING STRUCTURE USING SPRINGS OR HIGH TEMPERATURE FELT PADS.

- GENERAL NOTES - PARKING:**
- ELECTRICAL DRAWINGS SHALL BE READ IN CONJUNCTION WITH MECHANICAL, STRUCTURAL, ARCHITECTURAL AND LANDSCAPE DRAWINGS, AND COMPLY WITH ALL APPLICABLE NOTES.
 - CONTRACTOR SHALL RUN CABLES WITHIN CEILING SLAB OR ENCLOSURES TO RETAIN 2 HOUR FIRE PROTECTION RATING FOR ALL LOADS THAT CONNECT TO EMERGENCY POWER.
 - STAIRWAY WALL MOUNTED EMERGENCY LIGHT FIXTURES SHALL BE MOUNTED 8" AFF.
 - FOR STORAGE ROOM VENTILATION SYSTEM, DIV. 16 TO PROVIDE CONDUIT, WIRING AND SWITCH (S) TO START/STOP FAN AND DAMPER VIA THERMOSTAT. FAN AND 110V ACTUATOR TO BE SUPPLIED AND INSTALLED BY DIV. 15.
 - FOR UTILITY ROOM VENTILATION SYSTEM, DIV. 15 WILL PROVIDE LINE VOLTAGE THERMOSTAT (T) TO DIV. 16. DIV. 16 TO PROVIDE CONDUIT AND WIRING TO START/STOP FAN AND DAMPER VIA THERMOSTAT. FAN AND 110V ACTUATOR TO BE SUPPLIED AND INSTALLED BY DIV. 15.
 - FOR UNIT HEATER, DIV. 15 TO PROVIDE LINE VOLTAGE THERMOSTAT (T), DIV. 16 TO PROVIDE CONDUIT AND WIRING TO START/STOP UNIT HEATER.
 - SANITARY PIPE AS NOTED, ALL STANDPIPE, ALL UET SPRINKLER AND DOMESTIC WATER PIPE RUN IN UNHEATED AREA SHALL BE HEAT TRACED BY DIV. 16.
 - ULTRASONIC OCCUPANCY CEILING MOUNTED SENSORS SHOULD BE LOCATED AT A MINIMUM OF 6 FEET FROM HVAC SUPPLY/RETURN VENTS.
 - REFER TO DETAIL #6 ON DUG. E-35 FOR OCCUPANCY SENSORS (LIGHTING CONTROL BLOCK).
 - CONTRACTOR IS RESPONSIBLE FOR PROPER SENSITIVITY AND TIME DELAY SETTINGS FOR NON-ADAPTIVE PRODUCTS, FOLLOWING THE MANUFACTURER'S RECOMMENDED PLACEMENT, AND FIELD VERIFICATION OF CIRCUITS WITH RESPECT TO POWER PACK FOR OCCUPANCY SENSORS REPLACEMENT. (IF USED)
 - CONTRACTOR IS RESPONSIBLE FOR FIELD VERIFICATION OF REQUIRED NUMBER OF POWER PACKS FOR OCCUPANCY SENSORS. (IF USED).
 - CARBON MONOXIDE CONDUIT SYSTEM TO BE PROVIDED AND INSTALLED BY DIV. 16 THROUGHOUT PARKING LOT, AND SHALL BE MOUNTED ON COLUMNS AT 10200MM AFF. REFER TO DETAIL #12 ON DUG. E-35.
 - GARAGE EXHAUST FANS SHALL BE CONTROLLED BY CO SENSOR SYSTEM C/W OVERRIDE ON/OFF SWITCH LOCATED AT THE CACF.
 - REFER TO SPRINKLER DRAWINGS FOR FIRE PROTECTION DEVICE TO BE CONNECTED TO THE FIRE ALARM SYSTEM. THE DEVICE AND EQUIPMENT SHALL FORM AN INTEGRAL PART OF THE ELECTRICAL CONTRACT.
 - PROVIDE CHAIN FOR CEILING MOUNTED LIGHT FIXTURES IN P-1 LEVEL. LIGHTS TO BE INSTALLED AT 3m AFF. MAX. 2m AFF. MIN. OR INSTALL LIGHTS BELOW MECHANICAL PIPE, WHICHEVER HAS LOWER AFF.
 - OCCUPANCY SENSORS SHALL COMMUNICATE TO RELAY PANEL THROUGH LVT WIRING CIRCUIT # 21, ZC. REFER TO DETAIL 23 ON DUG. E-35.
 - CONTRACTOR SHALL PROVIDE ALLOWANCE FOR HEAT TRACING TO DRUM DRIPS (6 PER PARKING LEVEL). REFER TO DUG. E-34 FOR CIRCUITING.
 - THE INDOOR METAL ENCLOSED HIGH VOLTAGE SWITCHGEAR MUST BE CERTIFIED TO STANDARD CSA C22.2 No. 3. RULE 2-024, BULLETIN 36-6-19.
 - THE LOCATION OF THE HIGH VOLTAGE CONDUCTORS ENCASED OR EMBEDDED IN CONCRETE OR MASONRY SHALL BE INDICATED BY PERMANENT MARKERS SET IN THE WALLS, FLOORS OR CEILING AT INTERVALS OF NOT MORE THAN 3M. RULE 36-100 (4).
 - CONDUCTORS USED FOR THE CONNECTION TO DRY TYPE TRANSFORMERS SHALL BE PERMITTED TO ENTER A TRANSFORMER THROUGH THE TOP, ONLY WHERE THE TRANSFORMER IS MARKED TO PERMIT SUCH ENTRY. RULE 26-240 (3).
 - THE PRIMARY "HO" CONNECTION OF THE HIGH VOLTAGE TRANSFORMER SHALL BE CONNECTED TO THE UTILITY COMPANY'S SYSTEM NEUTRAL, WHEN REQUIRED BY THE UTILITY COMPANY. RULE 2-034.
 - ALL OUTDOOR RECEPTACLES SHALL BE WEATHERPROOF (LEGRADE CAT# 3232TRUR-GRY FOR NON-GFCI AND CAT# 1935TRUR-GRY FOR GFCI) AND SHALL BE EQUIPPED WITH A WILE IN USE CAST ALUMINUM COVERPLATE (LEGRADE CAT# WJUGAST1) COVERPLATE.
 - ELECTRICAL FEEDS TO THE CHILLER SHOULD BE ROUTED ACROSS THE CEILING AND DOWN TO THE CHILLER PANEL, NOT UP THROUGH THE FLOORING.
 - DIV. 16 TO PROVIDE 1" CONDUIT TO AUTOMATIC TRANSFER SWITCH AND GENERATOR CONTROLLER. REFER TO SINGLE LINE DIAGRAM DUG. E-30 FOR CONDUIT RISER DETAILS.
 - DIV. 16 TO PROVIDE 100A, 3P DISCONNECT IN POOL MECHANICAL ROOM FOR TURN-KEY POOL CONTRACTOR'S USE.
 - EXACT LOCATIONS OF OUTLETS TO BE DETERMINED ON SITE.
 - THIS LAYOUT AND CIRCUITING, ARE FOR INFORMATION ONLY. CONTRACTOR SHALL CONFIRM WITH SHOP DRAWINGS FOR FINAL EQUIPMENT LAYOUT AND QUANTITY.
 - ELECTRICAL CONTRACTOR TO SUPPLY CATALYTIC CONVERTER (SBS SILENCERS INC.) TO REDUCE GENERATOR EXHAUST NOX EMISSION TO 95% TO MEET THE MOECC AMBIENT AIR QUALITY CRITERIA. CATALYTIC CONVERTER SIZE TO MATCH ENGINE (MODEL # GE10TR) AND SILENCER. CATALYTIC CONVERTER TO BE INSTALLED IN GENERATOR ROOM BY MECHANICAL CONTRACTOR. COORDINATE INSTALLATION REQUIREMENT WITH MECHANICAL CONTRACTOR. ELECTRICAL CONTRACTOR TO SUPPLY CATALYST AS REQUIRED.

ELECTRICAL LEGEND

LIGHTING

- FLUORESCENT LIGHT FIXTURE, TYPE AS INDICATED
- LIGHT CONNECTED TO EMERGENCY POWER
- CEILING MOUNTED WALL MOUNTED LIGHT FIXTURE, INCREASED LETTER DENOTES TYPE
- POLE MOUNTED LIGHT FIXTURE, INCREASED LETTER DENOTES TYPE
- CAPPED CEILING LIGHT OUTLET
- TRACK LIGHT
- STRIP LIGHT
- UNDER CABINET FLUORESCENT LIGHT FIXTURE
- CEILING MOUNTED WALL MOUNTED EXIT SIGN
- RECESSED EMERGENCY LAMP RECEPTACLE HEAD
- EMERGENCY BATTERY PACK
- OCCUPANCY SENSOR POWER PACKS
- SINGLE/THREE POLE SINGLE/THREE PHASE TOGGLE SWITCH RESPECTIVELY
- 1/4" 1/4" 3/4" 1/2" DENOTES 3-WAY 4-WAY FLUO. LIGHT, DIMMER SWITCHED LIGHT RESPECTIVELY
- MASTER LIGHTING SHUT-OFF SWITCH
- SENSOR WALL SWITCH FIR. SELF POWERED
- OCCUPANCY SENSOR CEILING MOUNTED

POWER

- REGULAR DUPLEX RECEPTACLE
- DUPLEX RECEPTACLE GROUND FAULT INTERRUPT
- 3-WAY 1-FLUO DUPLEX RECEPTACLE
- ANGLE RECEPTACLE TYPE AND CONFIGURATION AS SPECIFIED FOR DRIVER
- CONNECTION FOR OVEN/COOKTOP
- 1/4" 1/4" 3/4" 1/2" ABOVE CONDUIT DEVICE
- CEILING MOUNTED DEVICES
- FLOOR MOUNTED DEVICES
- DISCONNECT SWITCH NON-FUSED
- DISCONNECT SWITCH FUSED
- OPERATION STARTER
- FRACTIONAL MOTOR/AN DIRECT CONNECTION
- DIRECT CONNECTION SINGLE PHASE
- DIRECT CONNECTION THREE PHASE
- THERMOSTAT
- DRYER SENSOR
- HEAT TRACE
- ELECTRICAL HEATER
- ELECTRICAL PANEL / SECURITY PANEL

TELECOMMUNICATION

- TYCABLE OUTLET
- TELEPHONE OUTLET
- TELEPHONE / CABLE (MULTI-PORT) OUTLET
- DATA OUTLET
- DATA/TELEPHONE OUTLET
- N WIRE TELEPHONE BOX OR RECEPTACLE
- WIFI LOCATION
- VIDEO INTERCOM
- RADIO RECEIVER

SECURITY

- INTERCOM / INTERPHONE
- INTERCOM WITH CAMERA
- PANIC BUTTON / PANIC INTERCOM STATION
- CARD READER
- AUTOMATIC RELEASE CARD ACCESS/RADIO RECEIVER
- ELECTRIC STRIKE
- MAGLOCK
- DOOR CONTACT / WINDOW CONTACT
- GLASS BREAK DETECTOR
- AUTOMATIC DOOR OPERATOR
- MOTION DETECTOR
- PUSH BUTTON
- SECURITY CAMERA

LIFE SAFETY

- FIRE ALARM SMOKE DETECTOR
- SPOKE ALARM
- FIRE ALARM DUST TYPE SMOKE DETECTOR
- FIRE ALARM HEAT DETECTOR
- FIXED TEMP. 68 °C DEGREE HEAT DETECTOR
- MOISTURE PROOF HEAT DETECTOR
- CO ALARM
- COMBINATION SMOKE 4 CO ALARM
- CO SENSOR / NO SENSOR
- FIRE ALARM MANUAL PULL STATION
- FIREFIGHTER'S HANDSET
- FIRE ALARM SPEAKER/SNOBBE WALL MTD.
- FIRE ALARM SPEAKER WALL MTD.
- FIRE ALARM SPEAKER/SNOBBE CEILING MTD.
- FIRE ALARM SPEAKER CEILING MTD.
- FIRE ALARM ANNUNCIATOR PANEL
- FIRE ALARM CONTROL PANEL

REVISIONS

NO.	DATE	DESCRIPTION
1		
2		
3		
4		
5		
6		
7		
8		
9		
10		
11		
12		
13		
14		
15		
16		
17		
18		
19		
20		
21		
22		

NOVA TREND CONSULTANTS

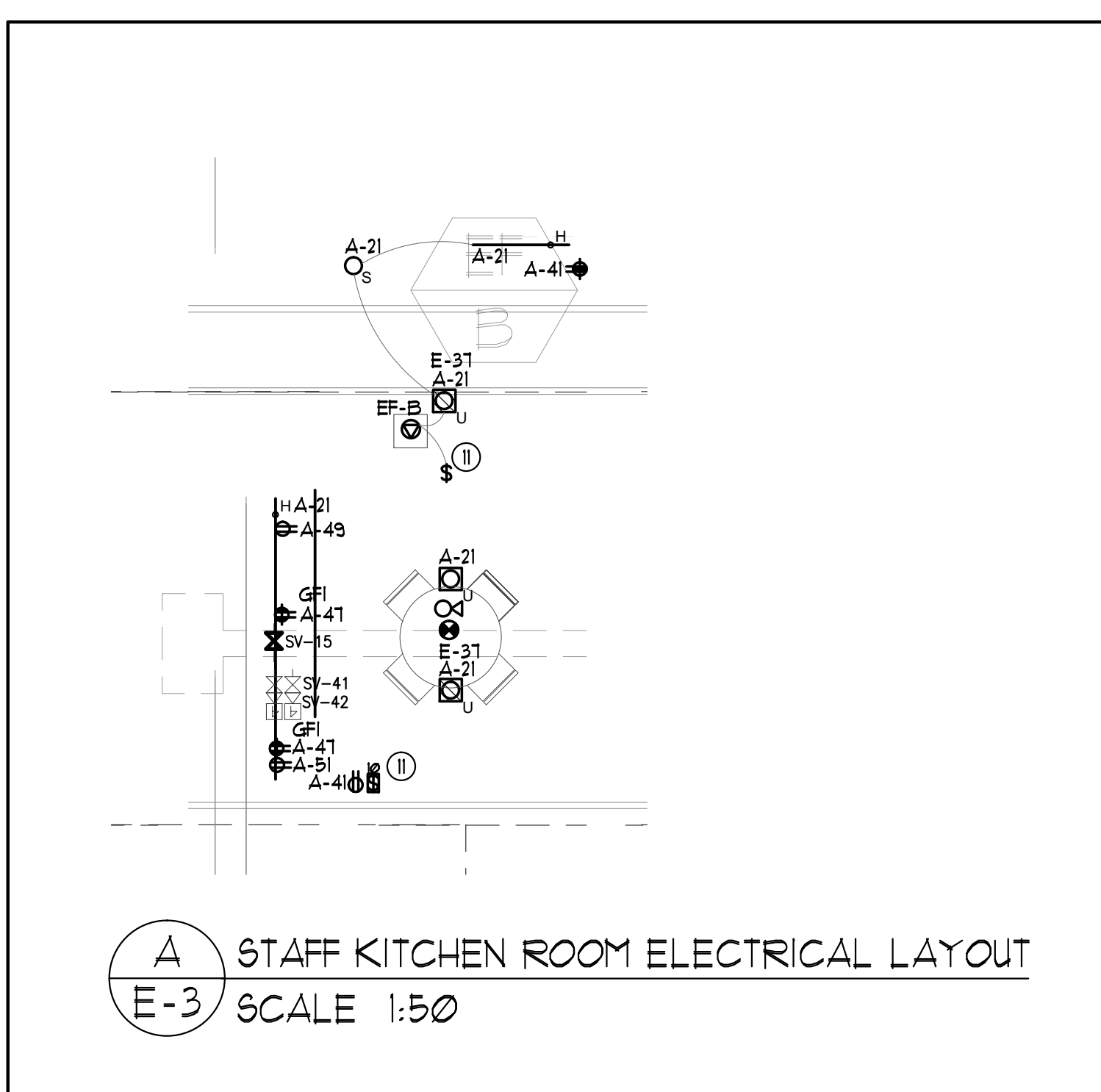
175 West Beaver Creek Road, Unit 31
 Richmond Hill, Ontario L4B 3M1
 Tel: 905-882-5445
 Fax: 905-882-5441
 Email: cad@novatrendeng.com

DRAWING TITLE
 P-1 FLOOR PLAN
 ELECTRICAL LAYOUT

PROJECT FILE
 ALEXANDRA PARK

38 CAMERON STREET, BLOCK II
 TORONTO ONTARIO

DRAWN BY: S.O. **CHECKED BY:** S.T. **SCALE:** 1:100
DATE: FEB, 13 **PROJECT NUMBER:** 1313 **DRAWING NUMBER:** E-3 OF



POOL EQUIPMENT:

- 2 (SUCTION PUMP)
- CIRCULATION PUMP 208-230/240V, 3ø, 1HP CCT. FROM (FG-11/13/15)
- JET PUMP 208-230/240V, 3ø, 15HP CCT. FROM (FG-11/19/21)
- CHEMICAL CONTROLLER 120V, 1ø, 15A CCT. (FG-2)
- WATER LEVEL CONTROL SYSTEM 120V, 1ø, 15A CCT. (FG-4)
- ACID FEED PUMP 120V, 1ø, CONN. TO FG-3
- STEAM GENERATOR 575V, 3ø, 36KW CONN. TO FP-FG1
- ELECTRIC HEATER 208V, 3ø, 18KW CONN. TO FG-23/25/27