

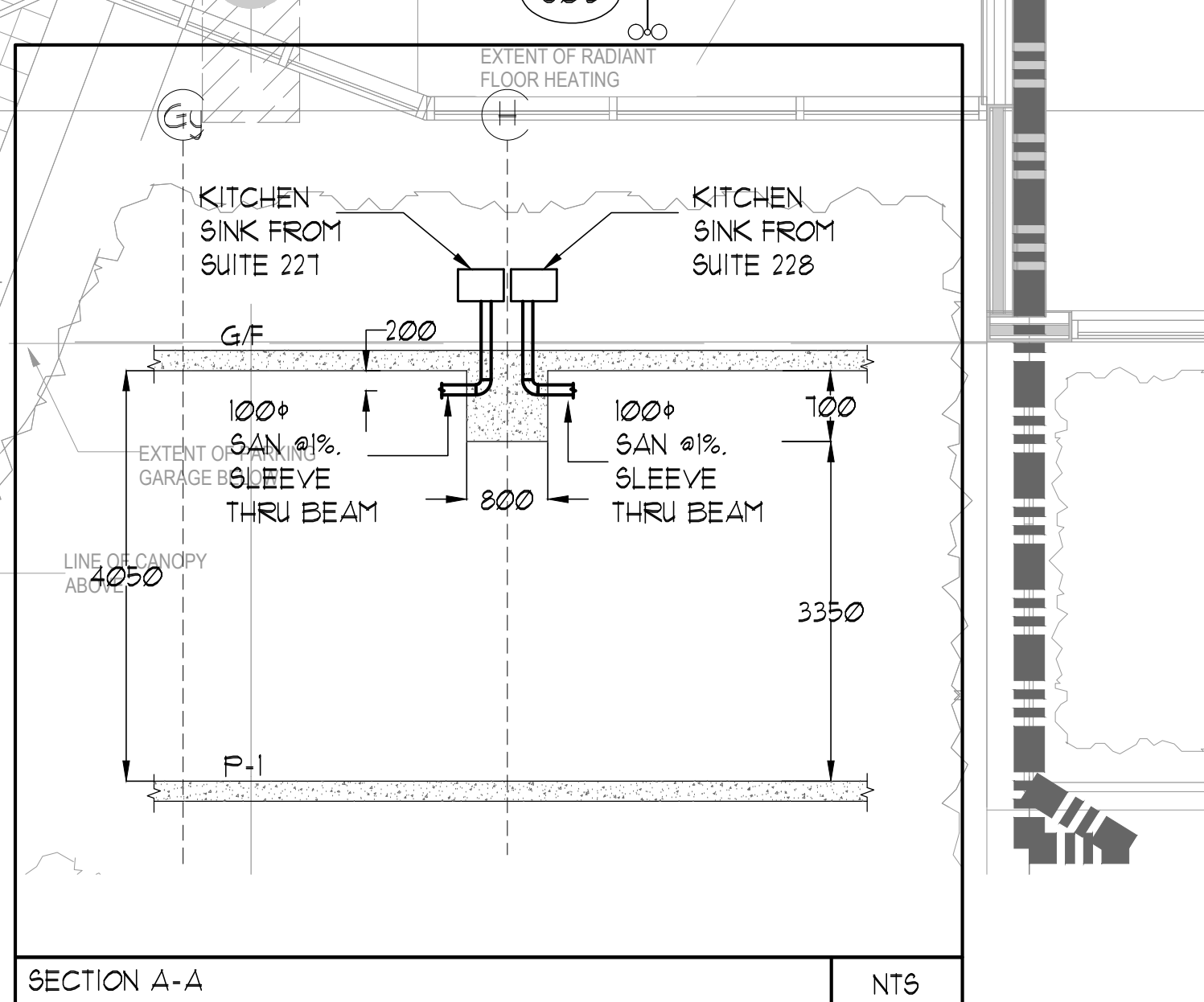
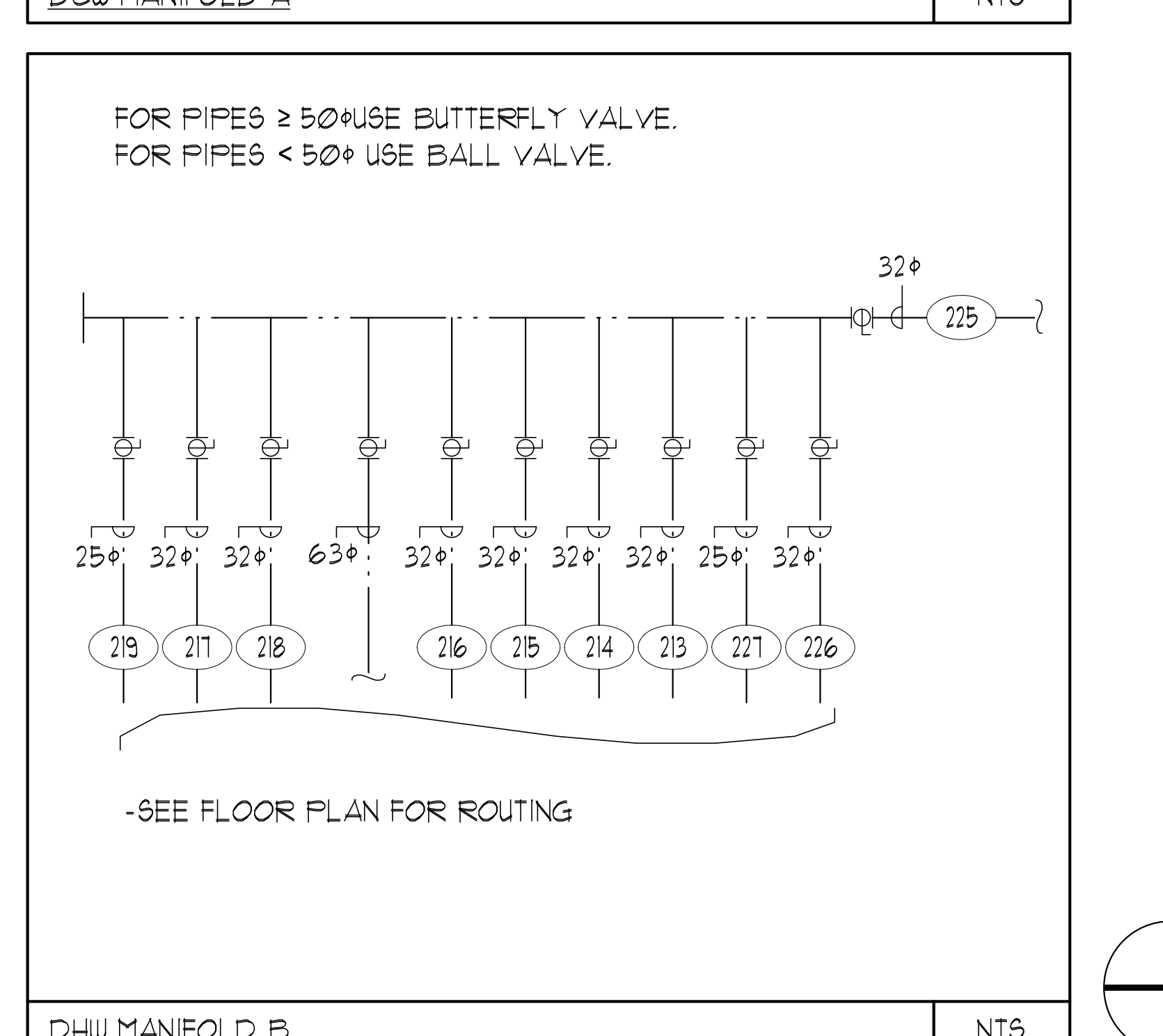
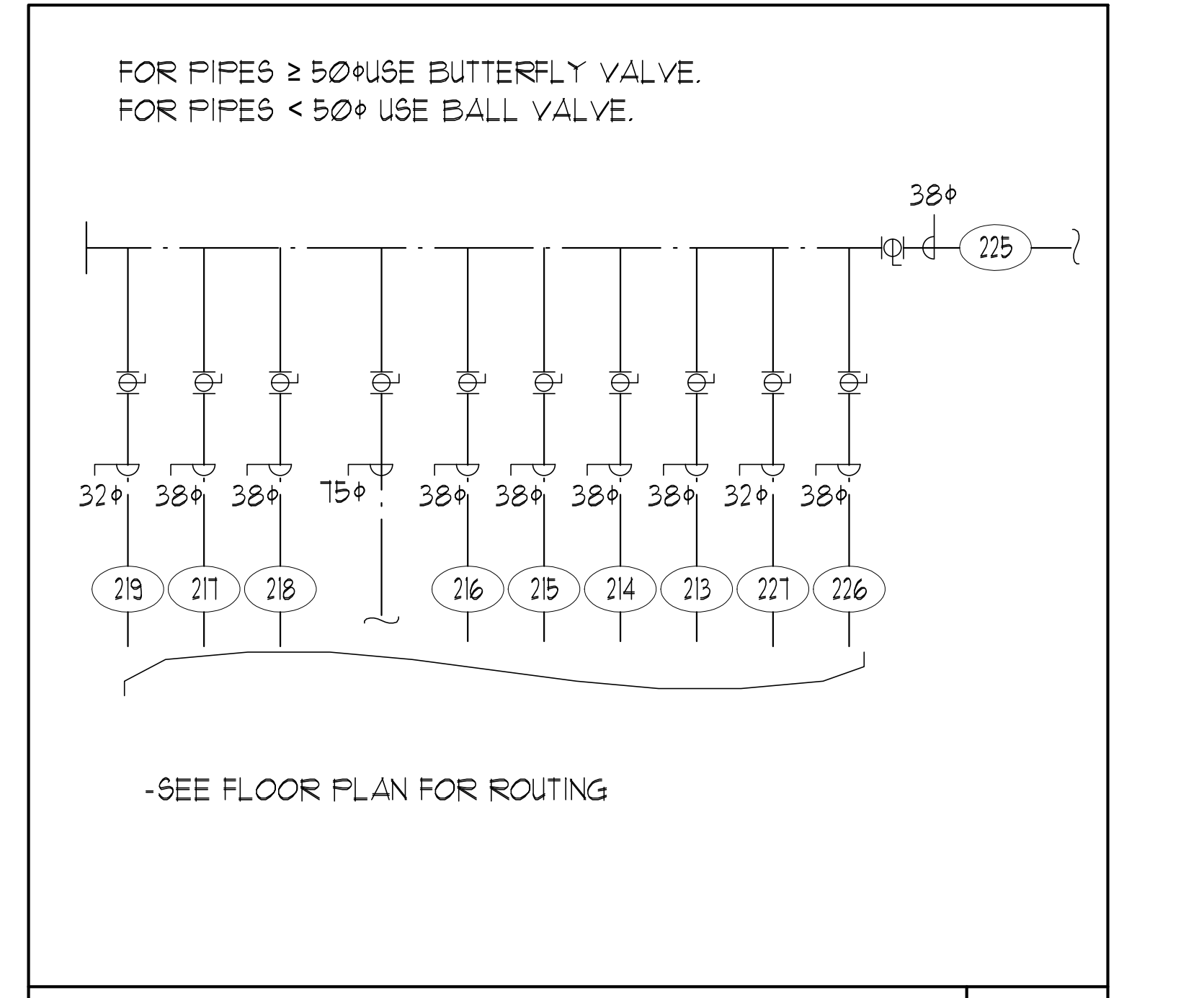
- 32 200* 5T1 @ 1%.
- 33 250* RWL DOWN.
- 34 250* 5T1 @ 1%.
- 35 SLEEVE THRU BEAM (TYPICAL).

REFER TO DWG M-6 FOR GENERAL NOTES AND M-9 FOR ACOUSTIC NOTES

CLEAR FLOOR TO UNDERSLAB = 405mm
 CLEAR PRODUCT = 3000mm
 COMPLETE DROP CEILING = 1000mm FOR DUCT/PIPES
 ROOF DRAINS + TERRACE DRAINS FROM 2/F

- NOTES:
- 1 100* SAN @ 1%.
 - 2 150* SAN @ 1%.
 - 3 100* SAN DOWN.
 - 4 150* SAN DOWN.
 - 5 100* DCW (LZ) + 100* DCW (HZ) FROM BELOW.
 - 6 15* DHW (LZ) FROM BELOW + 50* DHW (LZ) DOWN.
 - 7 100* DCW (LZ) + 100* DCW (HZ).
 - 8 63* DCW + 50* DHW.
 - 9 50* DCW + 38* DHW.
 - 10 15* DCW + 63* DHW.
 - 11 15* DHW + 50* DHW.
 - 12 PIPES INSIDE 2HR FIRE RATED ENCLOSURE. ENCLOSURE BY OTHERS.
 - 13 13* DCW + 13* DHW DOWN TO SERVE (1) LAVATORY.
 - 14 32* DCW + 25* DHW.
 - 15 38* DCW + 32* DHW.
 - 16 25* CONDENSATE PIPE CONNECT INDIRECTLY TO THE NEAREST WASTE.
 - 17 50* CONDENSATE PIPE CONNECT INDIRECTLY TO THE NEAREST WASTE.
 - 18 13* DCW + 13* DHW DOWN TO SERVE (1) WATER CLOSET.
 - 19 13* DCW + 13* DHW DOWN TO SERVE (1) SHOWER.
 - 20 50* CONDENSATE PIPE DOWN.
 - 21 DCW MANIFOLD A. SEE DCW MANIFOLD A DETAIL ON THIS DRAWING.
 - 22 DHW MANIFOLD A. SEE DHW MANIFOLD B DETAIL ON THIS DRAWING.
 - 23 13* DCW + 13* DHW DOWN TO SERVE (1) KITCHEN SINK.
 - 24 13* CONDENSATE PIPE DOWN.
 - 25 100* RWL FROM ABOVE.
 - 26 100* RWL DOWN.
 - 27 100* 5T1 @ 1%.
 - 28 150* RWL FROM ABOVE.
 - 29 150* 5T1 @ 1%.
 - 30 150* RWL DOWN.
 - 31 5T1 PIPE TO BE HEAT TRACE BY DIV.6 AND INSULATE AND JACKET BY DIV.5.

LEGEND MECHANICAL	
SYMBOL	DESCRIPTION
[Symbol]	SUPPLY AIR DISBURSER
[Symbol]	SUPPLY AIR TRIGGER
[Symbol]	LINEAR SUPPLY DISBURSER
[Symbol]	FAN NOISE
[Symbol]	RETURN AIR GRILLE
[Symbol]	EXHAUST AIR GRILLE
[Symbol]	SUPPLY DUCT UP
[Symbol]	SUPPLY DUCT DOWN
[Symbol]	RETURN DUCT UP
[Symbol]	RETURN DUCT DOWN
[Symbol]	EXHAUST DUCT UP
[Symbol]	EXHAUST DUCT DOWN
[Symbol]	FINE DAMPER
[Symbol]	BALANCING DAMPER
[Symbol]	MOTORIZED DAMPER
[Symbol]	MOTORIZED FIRE DAMPER
[Symbol]	BACKDRIFT DAMPER
[Symbol]	OPPOSITE BLADE VALVE CONTROL DAMPER
[Symbol]	COUPLING ADJUSTMENT
[Symbol]	TUNING VANES
[Symbol]	FLEXIBLE CONNECTION
[Symbol]	ACOUSTIC INSULATION
[Symbol]	TYPE OF EQUIPMENT
[Symbol]	EQUIPMENT IDENTIFICATION
[Symbol]	TYPE OF DAMPER OR GRILLE
[Symbol]	SMALL SIZE OR OTHER MARK SIZE
[Symbol]	ANALOG (OH OR LS)
[Symbol]	STARTER / 3 PHASE / PHASE
[Symbol]	FAN SWITCH / IN-SUITE ERY OVERSIDE BUTTON
[Symbol]	CO SENSOR
[Symbol]	GAS LINE
[Symbol]	GAS METER
[Symbol]	GAS SOLE
[Symbol]	PRESSURE REDUCING VALVE
[Symbol]	BANITARY ABOVE GRADE
[Symbol]	BANITARY BELOW GRADE
[Symbol]	ATOMI ABOVE GRADE
[Symbol]	ATOMI BELOW GRADE
[Symbol]	DOPHETIC COLD WATER
[Symbol]	DOPHETIC HOT WATER
[Symbol]	DOPHETIC HOT WATER RECIRCULATION
[Symbol]	BANITARY VENT
[Symbol]	WATER PIPES
[Symbol]	FLOOR DRAIN
[Symbol]	RUNNEL FLOOR DRAIN
[Symbol]	AREA DRAIN
[Symbol]	ROOF DRAIN
[Symbol]	BLAD AREA DRAIN
[Symbol]	BLAD B-LEVEL AREA DRAIN
[Symbol]	CATCH BASIN
[Symbol]	BANITARY TRAP
[Symbol]	ELBOW UP
[Symbol]	ELBOW DOWN
[Symbol]	WALL CLEANOUT
[Symbol]	FLOOR CLEANOUT
[Symbol]	ELBOW
[Symbol]	HOSE BIBB
[Symbol]	NON-FREEZE HOSE BIBB
[Symbol]	GLOBE VALVE
[Symbol]	GATE VALVE
[Symbol]	BALL VALVE
[Symbol]	BUTTERFLY VALVE
[Symbol]	PRESSURE REDUCING VALVE
[Symbol]	CHIEF VALVE
[Symbol]	CAP
[Symbol]	COMPRESSED AIR OUTLET
[Symbol]	BACKUP PRESSURE
[Symbol]	CIRCUIT BALANCING VALVE
[Symbol]	FULL PIPE
[Symbol]	DENOTES NO. OF PIPES
[Symbol]	TEMPERATURE SENSOR
[Symbol]	THERMISTOR
[Symbol]	2-WAY MODULATING VALVE
[Symbol]	3-WAY MODULATING VALVE
[Symbol]	17-WAY THERMISTOR
[Symbol]	CU 17 BUSHING + 17' PLUGS
[Symbol]	FLOOR ELEVATION ABOVE LEVEL
[Symbol]	HEADROOM FLOOR TO CEILING



NO.	DATE	DESCRIPTION	BY	CHK

NOVA
 175 West Beaver Creek Road Unit 31
 Richmond Hill, Ontario L4B 3M1
 Tel: 905-882-5445
 Fax: 905-882-5441

PROJECT TITLE
 G/F SOUTH
 F&D LAYOUT

PROJECT NO.
 60 ALEXANDRA PARK
 BLOCK II
 38 CAMERON STREET
 TORONTO ONTARIO

DATE
 FEB. 13 2013

SCALE
 1:50

DRAWING NUMBER
 M-10 OF 43