

| UNIT | NAME | AREA (SQ. FT.) | # OF UR | # OF FOUDE | SIZE (T) | FIXTURE UNITS | BR | SQ. FT/ T |
|------|--------|----------------|---------|------------|----------|---------------|----|-----------|
| 201 | 2N-MT | 830 | 2 | 0 | 15 | 16 | 2 | 553 |
| 202 | 2VT | 655 | 2 | 0 | 15 | 16 | 2 | 431 |
| 205 | 2RT | 670 | 2 | 0 | 15 | 16 | 2 | 441 |
| 206 | IF | 510 | 1 | 0 | 1 | 10 | 1 | 510 |
| 208 | UT | 560 | 1 | 0 | 15 | 10 | 1 | 560 |
| 209 | 1GT | 530 | 1 | 0 | 1 | 10 | 1 | 530 |
| 210 | 1C-D6T | 590 | 2 | 0 | 1 | 16 | 1 | 590 |
| 211 | 1C-DT4 | 590 | 2 | 0 | 1 | 16 | 1 | 590 |
| 212 | 1C-DT3 | 590 | 2 | 0 | 1 | 16 | 1 | 590 |
| 213 | 1C-D | 590 | 2 | 0 | 1 | 16 | 1 | 590 |
| 228 | 2DT | 650 | 2 | 0 | 15 | 16 | 2 | 433 |

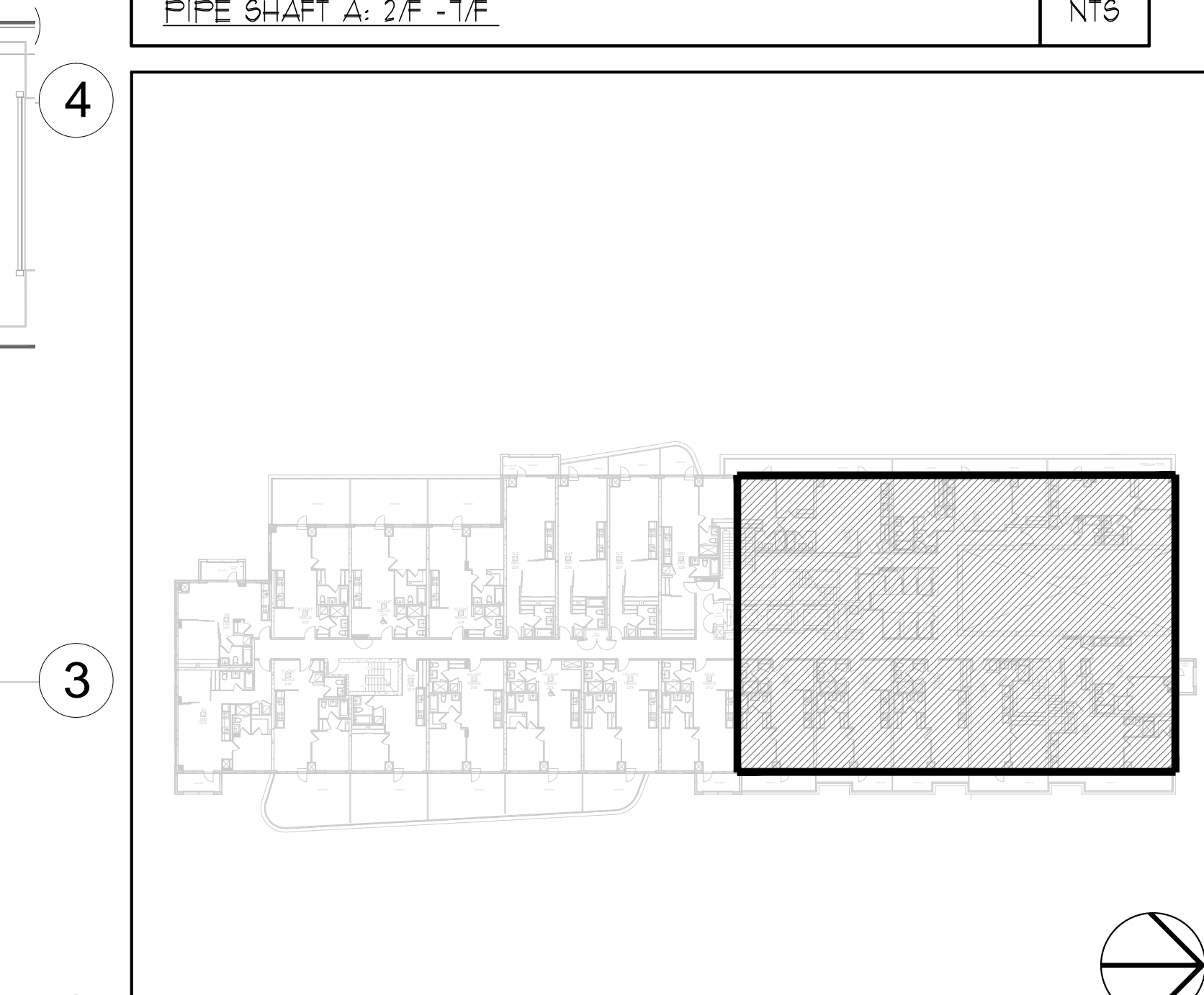
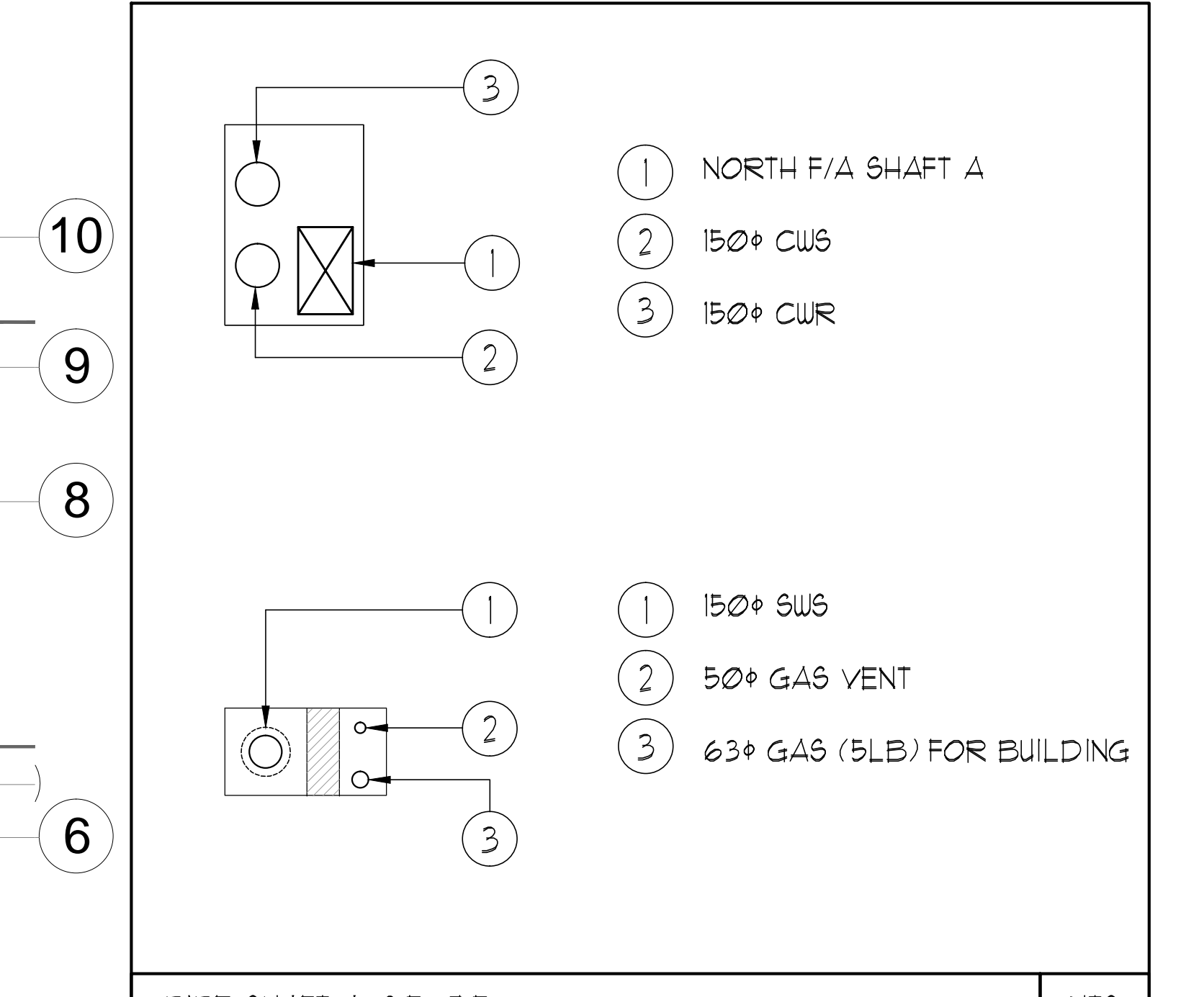
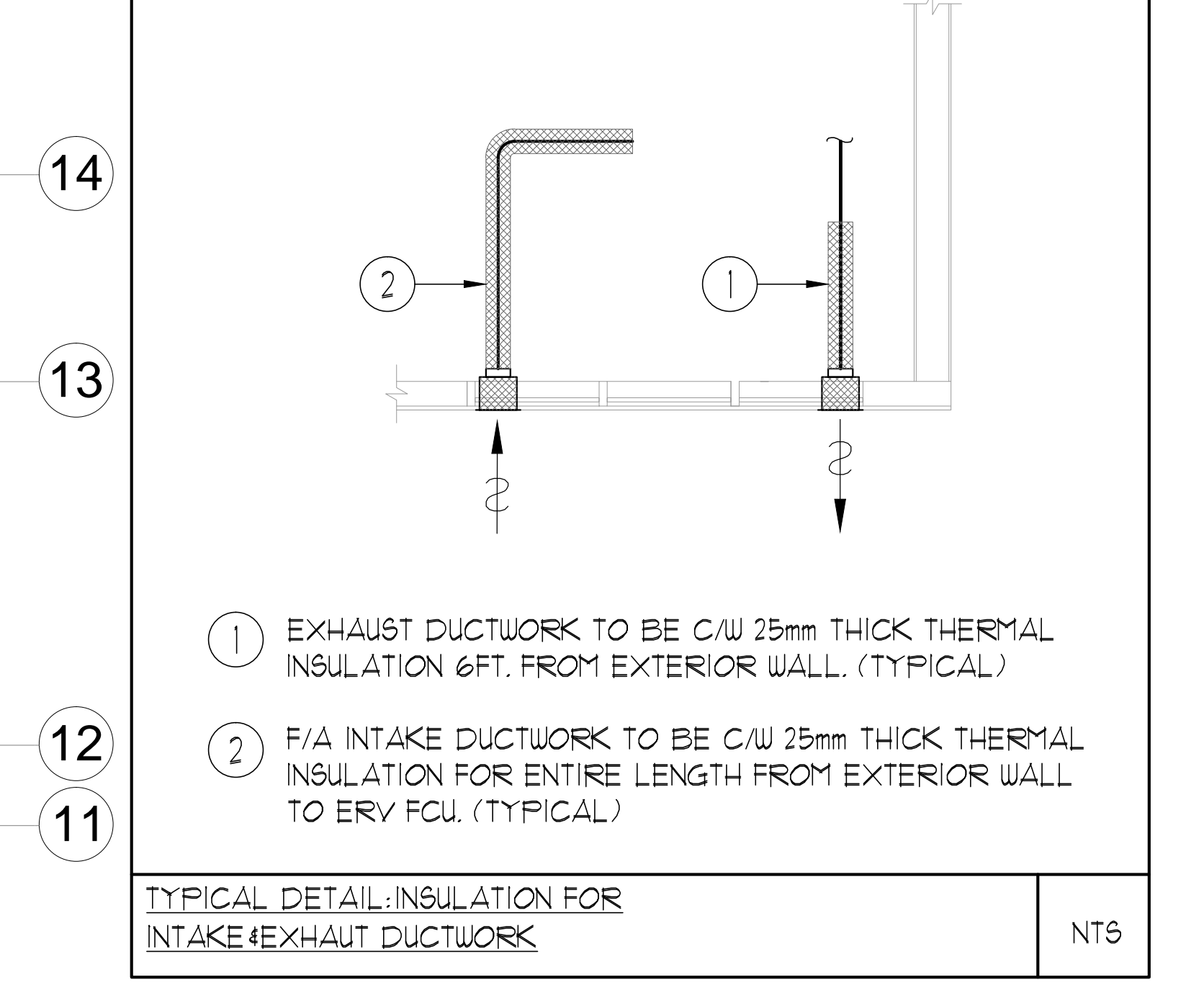
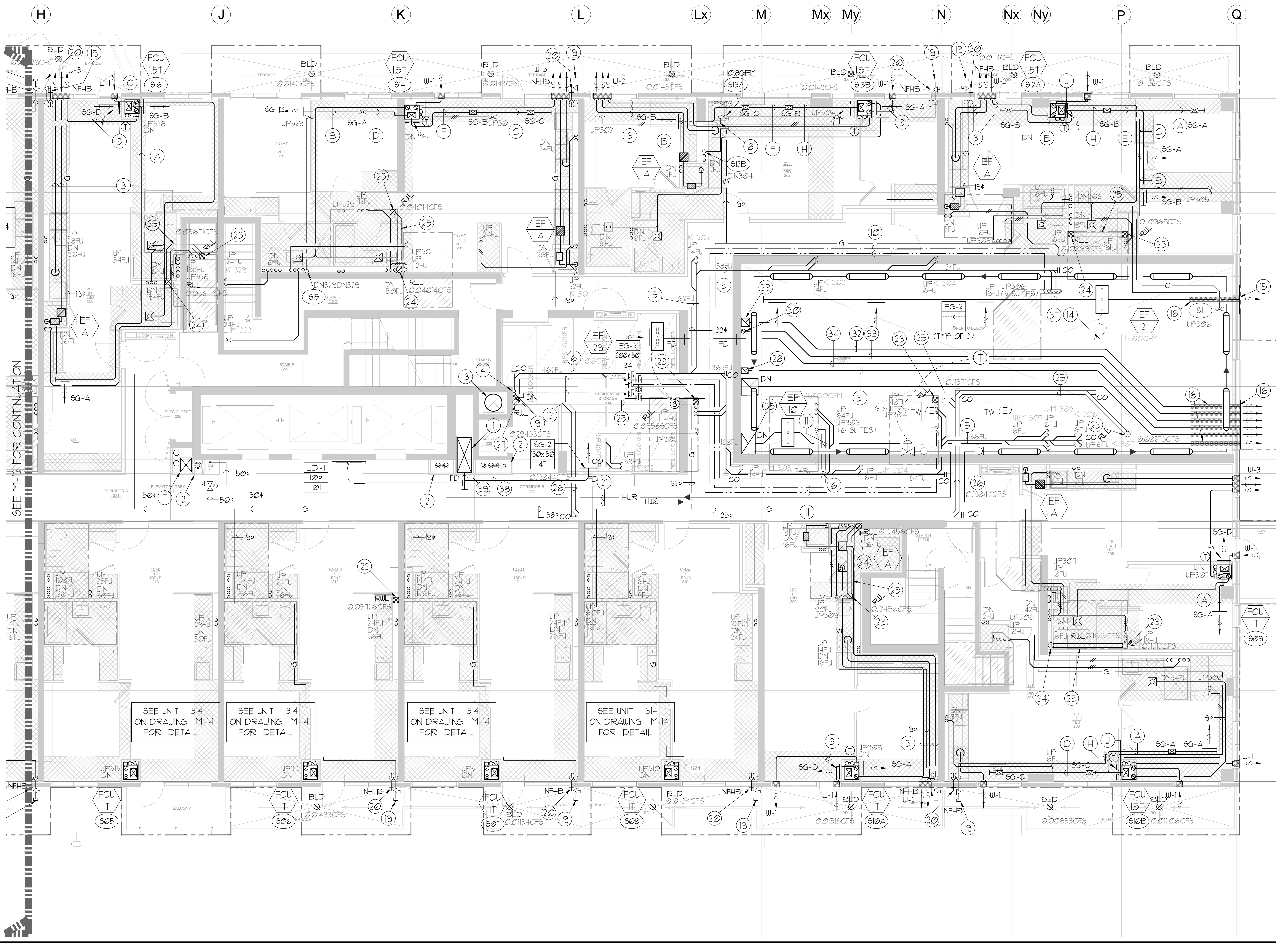
| GRILLE SIZING TABLE | | | | VERTICAL FAN COIL SIZE | | |
|---------------------|---------|-----------|--------------|--|-------|---------|
| DESIGNATION | SIZE | L/S | UNITS SERVED | DESIGNATION | MODEL | W x D |
| SG-A | 300x100 | 47 | 4.7 | FCU-1T | 450 | 500x660 |
| SG-B | 300x150 | 71 | 7.1 | FCU-15T | 600 | 500x660 |
| SG-C | 400x150 | 94 | 9.4 | FCU-2T | 800 | 500x660 |
| SG-D | 450x150 | 141 | 14.1 | FCU-25T | 1000 | 550x660 |
| EG-A | 150x150 | 35 | 3.5 | FCU-3T | 1200 | 550x660 |
| W-1 | 225x200 | 210mm | 21 | NOTE: A MIN. OF 125mm IS REQUIRED ON THE SIDE OF PIPE RISER. | | |
| W-2 | 475x200 | INSULATED | 47.5 | | | |
| W-3 | 675x200 | WALL BOX | 67.5 | | | |

| DUCT SIZING TABLE (4.06 m/s, 800 FPM) | | | | | |
|---------------------------------------|-----|-----------|-------------|-----|-----------|
| DESIGNATION | L/S | DUCT SIZE | DESIGNATION | L/S | DUCT SIZE |
| (A) | 47 | 100x150 | (G) | 109 | 350x150 |
| (B) | 71 | 150x150 | (H) | 236 | 450x150 |
| (C) | 94 | 200x150 | (J) | 283 | 500x150 |
| (D) | 118 | 200x150 | (K) | 330 | 600x150 |
| (E) | 141 | 250x150 | (L) | 377 | 500x200 |
| (F) | 165 | 300x150 | | | |

- GENERAL NOTES:**
- CONTRACTOR SHALL CO-ORDINATE ARCHITECTURAL, STRUCTURAL, LIGHTING, HVAC, SPRINKLER DRAWINGS TO AVOID AREAS OF CONFLICT AND TO MAINTAIN CEILING HEIGHTS.
 - CONTRACTOR SHALL REPORT ALL DISCREPANCIES AND AREA OF CONFLICTS TO THE ENGINEER PRIOR TO WORK BEGINS.
 - PROVIDE EXPANSION CHAMBERS FOR ALL KITCHEN SINKS.
 - SEE INSTALLATION DETAILS DRAWING FOR WASHER, DCM, H/C WATER, SANITARY CONNECTION DETAILS.
 - SUPPLY AND INSTALL COMPLETE DOMESTIC HOT AND COLD WATER LINES, SANITARY AND VENT LINES TO EACH FIXTURE, EQUIPMENT INCLUDING WATER CLOSETS, LAVATORIES, BATHS, SHOWERS, KITCHEN SINK, WASHING MACHINES, DISHWASHERS, AND FLOOR DRAINS, KITCHEN SINK, LAVATORIES, WATER CLOSETS AND WASHING MACHINE TO BE C/W LOCALIZED SHUT-OFF VALVES.
 - ALL VENT PIPE INSTALLATION TO COMPLY WITH PLUMBING CODES.
 - FOR D.H.C. W. RISER SIZES, REFER TO RISER DIAGRAM
 - FIRE DAMPERS ARE REQUIRED TO BE LISTED AND ARE TO HAVE FIRE PROTECTION RATING OF THE PENETRATED FIRE SEPARATION.
 - THE PIPING PENETRATING THE VARIOUS FIRE SEPARATION IS REQUIRED TO BE FIRESTOPPED WITH A LISTED FIRESTOPPING MATERIAL IN ACCORDANCE WITH CBC ARTICLE 3.13.1.
 - THE FIRE HOSE CABINET THAT ARE RECESSED INTO THE EXIT STAIR SHAFTS ARE REQUIRED TO BE SEPARATED FROM THE EXIT STAIR BY A 2 HR FIRE SEPARATION.
 - NO FLEXIBLE DUCT SHALL BE USED FOR ANY IN-SUITE DUCTWORK.
 - PROVIDE 25MM EXTERNAL INSULATION TO ENTIRE FRESH AIR DUCT FROM EXTERIOR WALL TO ERV FAN COIL UNIT.
 - DRYER EXHAUST DUCT SHALL BE SMOOTH AND CORROSION-RESISTANT MATERIAL (FLEXIBLE CONNECTION IS NOT ACCEPTABLE).

LEGEND MECHANICAL

| SYMBOL | DESCRIPTION |
|----------|---|
| [Symbol] | SUPPLY AIR DIFFUSER |
| [Symbol] | SUPPLY AIR TRAP |
| [Symbol] | LINEAR SUPPLY DIFFUSER |
| [Symbol] | THERMOSTAT |
| [Symbol] | FAN MOTOR |
| [Symbol] | RETURN AIR GRILLE |
| [Symbol] | EXHAUST AIR GRILLE |
| [Symbol] | SUPPLY DUCT UP |
| [Symbol] | SUPPLY DUCT DOWN |
| [Symbol] | RETURN DUCT UP |
| [Symbol] | RETURN DUCT DOWN |
| [Symbol] | EXHAUST DUCT UP |
| [Symbol] | EXHAUST DUCT DOWN |
| [Symbol] | FIRE DAMPER |
| [Symbol] | BALANCING DAMPER |
| [Symbol] | MOTORIZED DAMPER |
| [Symbol] | MOTORIZED FIRE DAMPER |
| [Symbol] | BACKDRIFT DAMPER |
| [Symbol] | OPPOSED BLADE VOLUME CONTROL DAMPER |
| [Symbol] | COIL STOPPING DAMPER |
| [Symbol] | TURNS VAVES |
| [Symbol] | FLEXIBLE CONNECTION |
| [Symbol] | ACOUSTIC INSULATION |
| [Symbol] | TYPE OF EQUIPMENT |
| [Symbol] | EQUIPMENT IDENTIFICATION |
| [Symbol] | TYPE OF GRILLE OR GRILLE |
| [Symbol] | SMALL SIZE OR OTHER MARK SIZE |
| [Symbol] | ANALOG (OH OR LS) |
| [Symbol] | STARTER 3 PHASE / PHASE / |
| [Symbol] | FAN SWITCH / IN-SUITE ERV OVERRIDE BUTTON |
| [Symbol] | LD SENSOR |
| [Symbol] | GAS LINE |
| [Symbol] | GAS PETER |
| [Symbol] | GAS SOCK |
| [Symbol] | PRESSURE REDUCING VALVE |
| [Symbol] | SANITARY ABOVE GRADE |
| [Symbol] | SANITARY BELOW GRADE |
| [Symbol] | STORM ABOVE GRADE |
| [Symbol] | STORM BELOW GRADE |
| [Symbol] | DOPESTIC HOT WATER |
| [Symbol] | DOPESTIC COLD WATER |
| [Symbol] | DOPESTIC HOT WATER RECIRCULATION |
| [Symbol] | SANITARY VENT |
| [Symbol] | WATER PETER |
| [Symbol] | FLOOR DRAIN |
| [Symbol] | ROOF DRAIN |
| [Symbol] | AREA DRAIN |
| [Symbol] | BLD. AREA DRAIN |
| [Symbol] | BLD. LEVEL AREA DRAIN |
| [Symbol] | CATCH BASIN |
| [Symbol] | SANITARY TRAP |
| [Symbol] | ELBOW UP |
| [Symbol] | ELBOW DOWN |
| [Symbol] | WALL CLEANOUT |
| [Symbol] | FLOOR CLEANOUT |
| [Symbol] | NON-FREEZE HOSE BIBB |
| [Symbol] | NON-FREEZE HOSE BIBB |
| [Symbol] | GATE VALVE |
| [Symbol] | BALL VALVE |
| [Symbol] | BUTTERFLY VALVE |
| [Symbol] | PRESSURE REDUCING VALVE |
| [Symbol] | CHOKER VALVE |
| [Symbol] | CAP |
| [Symbol] | COMPRESSED AIR OUTLET |
| [Symbol] | BACKFLOW PREVENTER |
| [Symbol] | CIRCUIT BALANCING VALVE |
| [Symbol] | FULL PIPE |
| [Symbol] | DIAGONAL NO. OF PIPES |
| [Symbol] | TEMPERATURE SENSOR |
| [Symbol] | TEMPERATURE TRANSDUCER |
| [Symbol] | 3-WAY MODULATING VALVE |
| [Symbol] | 3-WAY MODULATING VALVE |
| [Symbol] | 10' X 10' THERMOWELL |
| [Symbol] | C/W 10' BUSHING 4 1/2" FLUGS |
| [Symbol] | FLOOR ELEVATION ABOVE LEVEL |
| [Symbol] | HEADROOM FLOOR TO CEILING |



- KEY PLAN**
- 150mm SWs
 - 50mm GAS VENT
 - 63mm GAS (5LB) FOR BUILDING
 - 150mm DUCT.
 - 200x150 DUCT.
 - 150x500 EXHAUST DUCT FROM BELOW.
 - 600x300 DUCT.
 - 150x150 DUCT.
 - 200x200 DUCT.
 - 150x200 EXHAUST DUCT FROM BELOW.
 - 300x300 EXHAUST DUCT FROM BELOW.
 - 150x EXHAUST DUCT FROM BELOW.
 - 250x200 DUCT.
 - 300x300 DUCT.

- ACOUSTIC NOTES:**
- ALL SYSTEM/DOMESTIC PIPE LOOPS OR OFFSETS WHICH ARE 50MM DIA. AND LARGER SHALL BE ISOLATED USING NEOPRENE-N-SHEAR HANGERS, AND ADDITIONAL 25 MM THICK RIBBED OR WAFFLED NEOPRENE PADS IN THE SADDLES OF CLEVIS HANGERS.
 - ALL PIPES SMALLER THAN 50MM DIA. SHALL BE ISOLATED WITH 5MM THICK RIBBED OR WAFFLED RUBBER PADS IN HANGER SADDLES.

- NOTES:**
- NORTH F/A SHAFT B FROM G/F TO 14/F. DUCT SERVING CORRIDOR FROM G/F TO 14/F. SEE PRESSURIZATION / VENTILATION RISER DIAGRAM FOR DETAILS.
 - PIPE SHAFT - REFER TO PIPE RISER DETAIL ON THIS DRAWING FOR DETAILS.
 - 150mm KITCHEN / DRYER / W/R / FCU INTAKE / FCU EXHAUST DUCT. (TYPICAL UNLESS OTHERWISE NOTED)
 - 150mm SAN DRAIN
 - 100mm SAN @1%
 - 150mm SAN @1%
 - 32mm SWs
 - 50mm DCU + 30mm DHW FROM BELOW.
 - 32mm DCU + 25mm DHW.
 - 38mm DCU + 32mm DHW.
 - 50mm DCU + 30mm DHW.
 - 600mm GARBAGE CHUTE
 - CONNECT EF-21 TO NO SENSOR AT LOWER LEVEL.
 - 1000x300 WEATHERPROOF EXHAUST LOUVER c/w BIRDSCREEN.
 - 1700x800 WEATHERPROOF EXHAUST LOUVER c/w BIRDSCREEN.
 - FOR FUTURE USE.
 - 50MM THICK EXTERNAL INSULATION 150MM FROM EXTERIOR WALL.
 - 19mm GAS PIPE c/w VALVE AND CAP FOR BBQ.
 - 19mm DCU FOR NFHB TO BE CONNECTED TO SUITE'S MAIN DCU LINE.
 - 32mm HUR + R
 - 100mm RUL FROM ABOVE AND DOWN.
 - 100mm RUL FROM ABOVE.
 - 100mm RUL FROM DOWN.
 - 100mm STM @1%.
 - 150mm STM @1%.
 - 150mm RUL DOWN.
 - 250x200 EXHAUST DUCT FROM BELOW.
 - 300x300 EXHAUST DUCT FROM BELOW.
 - 150x EXHAUST DUCT FROM BELOW.
 - 250x200 DUCT.
 - 300x300 DUCT.

- NOTES:**
- NORTH F/A SHAFT A FROM G/F TO 14/F. DUCT SERVING CORRIDOR FROM G/F TO 14/F. SEE PRESSURIZATION / VENTILATION RISER DIAGRAM FOR DETAILS.
 - 32mm SWs
 - 50mm DCU + 30mm DHW FROM BELOW.
 - 32mm DCU + 25mm DHW.
 - 38mm DCU + 32mm DHW.
 - 50mm DCU + 30mm DHW.
 - 600mm GARBAGE CHUTE
 - CONNECT EF-21 TO NO SENSOR AT LOWER LEVEL.
 - 1000x300 WEATHERPROOF EXHAUST LOUVER c/w BIRDSCREEN.
 - 1700x800 WEATHERPROOF EXHAUST LOUVER c/w BIRDSCREEN.
 - FOR FUTURE USE.
 - 50MM THICK EXTERNAL INSULATION 150MM FROM EXTERIOR WALL.
 - 19mm GAS PIPE c/w VALVE AND CAP FOR BBQ.
 - 19mm DCU FOR NFHB TO BE CONNECTED TO SUITE'S MAIN DCU LINE.
 - 32mm HUR + R
 - 100mm RUL FROM ABOVE AND DOWN.
 - 100mm RUL FROM ABOVE.
 - 100mm RUL FROM DOWN.
 - 100mm STM @1%.
 - 150mm STM @1%.
 - 150mm RUL DOWN.
 - 250x200 EXHAUST DUCT FROM BELOW.
 - 300x300 EXHAUST DUCT FROM BELOW.
 - 150x EXHAUST DUCT FROM BELOW.
 - 250x200 DUCT.
 - 300x300 DUCT.

- NOTES:**
- NORTH F/A SHAFT A FROM G/F TO 14/F. DUCT SERVING CORRIDOR FROM G/F TO 14/F. SEE PRESSURIZATION / VENTILATION RISER DIAGRAM FOR DETAILS.
 - 32mm SWs
 - 50mm DCU + 30mm DHW FROM BELOW.
 - 32mm DCU + 25mm DHW.
 - 38mm DCU + 32mm DHW.
 - 50mm DCU + 30mm DHW.
 - 600mm GARBAGE CHUTE
 - CONNECT EF-21 TO NO SENSOR AT LOWER LEVEL.
 - 1000x300 WEATHERPROOF EXHAUST LOUVER c/w BIRDSCREEN.
 - 1700x800 WEATHERPROOF EXHAUST LOUVER c/w BIRDSCREEN.
 - FOR FUTURE USE.
 - 50MM THICK EXTERNAL INSULATION 150MM FROM EXTERIOR WALL.
 - 19mm GAS PIPE c/w VALVE AND CAP FOR BBQ.
 - 19mm DCU FOR NFHB TO BE CONNECTED TO SUITE'S MAIN DCU LINE.
 - 32mm HUR + R
 - 100mm RUL FROM ABOVE AND DOWN.
 - 100mm RUL FROM ABOVE.
 - 100mm RUL FROM DOWN.
 - 100mm STM @1%.
 - 150mm STM @1%.
 - 150mm RUL DOWN.
 - 250x200 EXHAUST DUCT FROM BELOW.
 - 300x300 EXHAUST DUCT FROM BELOW.
 - 150x EXHAUST DUCT FROM BELOW.
 - 250x200 DUCT.
 - 300x300 DUCT.

- NOTES:**
- NORTH F/A SHAFT A FROM G/F TO 14/F. DUCT SERVING CORRIDOR FROM G/F TO 14/F. SEE PRESSURIZATION / VENTILATION RISER DIAGRAM FOR DETAILS.
 - 32mm SWs
 - 50mm DCU + 30mm DHW FROM BELOW.
 - 32mm DCU + 25mm DHW.
 - 38mm DCU + 32mm DHW.
 - 50mm DCU + 30mm DHW.
 - 600mm GARBAGE CHUTE
 - CONNECT EF-21 TO NO SENSOR AT LOWER LEVEL.
 - 1000x300 WEATHERPROOF EXHAUST LOUVER c/w BIRDSCREEN.
 - 1700x800 WEATHERPROOF EXHAUST LOUVER c/w BIRDSCREEN.
 - FOR FUTURE USE.
 - 50MM THICK EXTERNAL INSULATION 150MM FROM EXTERIOR WALL.
 - 19mm GAS PIPE c/w VALVE AND CAP FOR BBQ.
 - 19mm DCU FOR NFHB TO BE CONNECTED TO SUITE'S MAIN DCU LINE.
 - 32mm HUR + R
 - 100mm RUL FROM ABOVE AND DOWN.
 - 100mm RUL FROM ABOVE.
 - 100mm RUL FROM DOWN.
 - 100mm STM @1%.
 - 150mm STM @1%.
 - 150mm RUL DOWN.
 - 250x200 EXHAUST DUCT FROM BELOW.
 - 300x300 EXHAUST DUCT FROM BELOW.
 - 150x EXHAUST DUCT FROM BELOW.
 - 250x200 DUCT.
 - 300x300 DUCT.

- NOTES:**
- NORTH F/A SHAFT A FROM G/F TO 14/F. DUCT SERVING CORRIDOR FROM G/F TO 14/F. SEE PRESSURIZATION / VENTILATION RISER DIAGRAM FOR DETAILS.
 - 32mm SWs
 - 50mm DCU + 30mm DHW FROM BELOW.
 - 32mm DCU + 25mm DHW.
 - 38mm DCU + 32mm DHW.
 - 50mm DCU + 30mm DHW.
 - 600mm GARBAGE CHUTE
 - CONNECT EF-21 TO NO SENSOR AT LOWER LEVEL.
 - 1000x300 WEATHERPROOF EXHAUST LOUVER c/w BIRDSCREEN.
 - 1700x800 WEATHERPROOF EXHAUST LOUVER c/w BIRDSCREEN.
 - FOR FUTURE USE.
 - 50MM THICK EXTERNAL INSULATION 150MM FROM EXTERIOR WALL.
 - 19mm GAS PIPE c/w VALVE AND CAP FOR BBQ.
 - 19mm DCU FOR NFHB TO BE CONNECTED TO SUITE'S MAIN DCU LINE.
 - 32mm HUR + R
 - 100mm RUL FROM ABOVE AND DOWN.
 - 100mm RUL FROM ABOVE.
 - 100mm RUL FROM DOWN.
 - 100mm STM @1%.
 - 150mm STM @1%.
 - 150mm RUL DOWN.
 - 250x200 EXHAUST DUCT FROM BELOW.
 - 300x300 EXHAUST DUCT FROM BELOW.
 - 150x EXHAUST DUCT FROM BELOW.
 - 250x200 DUCT.
 - 300x300 DUCT.

REVISIONS

| NO. | DESCRIPTION | DATE |
|-----|-------------|------|
| | | |
| | | |
| | | |
| | | |
| | | |

NOVA

175 West Beaver Creek Road Unit 31
Richmond Hill, Ontario L4B 3M1
Tel: 905.882-5445
Fax: 905.882-5441

PROJECT TITLE
SG ALEXANDRA PARK
BLOCK II
38 CAMERON STREET
TORONTO

DATE
FEB 13 2013

SCALE
1:50

DRAWING NUMBER
M-13

DATE
FEB 13 2013

PROJECT NUMBER
1313

DRAWING NUMBER
M-13

DATE
FEB 13 2013

PROJECT NUMBER
1313

DRAWING NUMBER
M-13

DATE
FEB 13 2013

PROJECT NUMBER
1313

DRAWING NUMBER
M-13