

UNIT	NAME	AREA (SQ. FT.)	# OF UR	# OF POWDER	SIZE (T)	FIXTURE UNITS	BR	SQ. FT./T
014	IC-D1	590	2	0	1	16	1	590
015	IC-DC1	590	2	0	1	16	1	590
016	IC-DF1	605	2	0	1	16	1	605
017	ID3	480	1	0	1	10	1	480
019	2E	675	2	0	15	16	2	450
021	2C3	670	2	0	15	16	2	441
023	IC-DD1	605	2	0	1	16	1	605
024	IC-DG1	620	2	0	1	16	1	620
026	IC-D1	590	2	0	1	16	1	590
027	2K4	730	2	0	15	16	2	481

GRILLE SIZING TABLE			VERTICAL FAN COIL SIZE		
DESIGNATION	SIZE	L/S (UNLESS SPECIFIED OTHERWISE)	DESIGNATION	MODEL	W x D
SG-A	300x100	47-10	FCU-1T	450	500x660
SG-B	300x150	71-93	FCU-15T	600	500x660
SG-C	400x150	94-140	FCU-2T	800	500x660
SG-D	450x150	141-188	FCU-25T	1000	550x660
EG-A	150x150	35	FCU-3T	1200	550x660
W-1	225x200	210mm(L)	NOTE: A MIN. OF 125mm IS REQUIRED ON THE SIDE OF PIPE RISER.		
W-2	425x200	INSULATED			
W-3	625x200	WALL BOX			

DUCT SIZING TABLE (4.06 m/s, 800 FPM)			DUCT SIZING TABLE		
DESIGNATION	L/S	DUCT SIZE	DESIGNATION	L/S	DUCT SIZE
(A)	47	100x150	(G)	103	350x150
(B)	71	150x150	(H)	236	450x150
(C)	94	200x150	(J)	283	500x150
(D)	118	200x150	(K)	330	600x150
(E)	141	250x150	(L)	377	500x200
(F)	165	300x150			

ACOUSTIC NOTES:

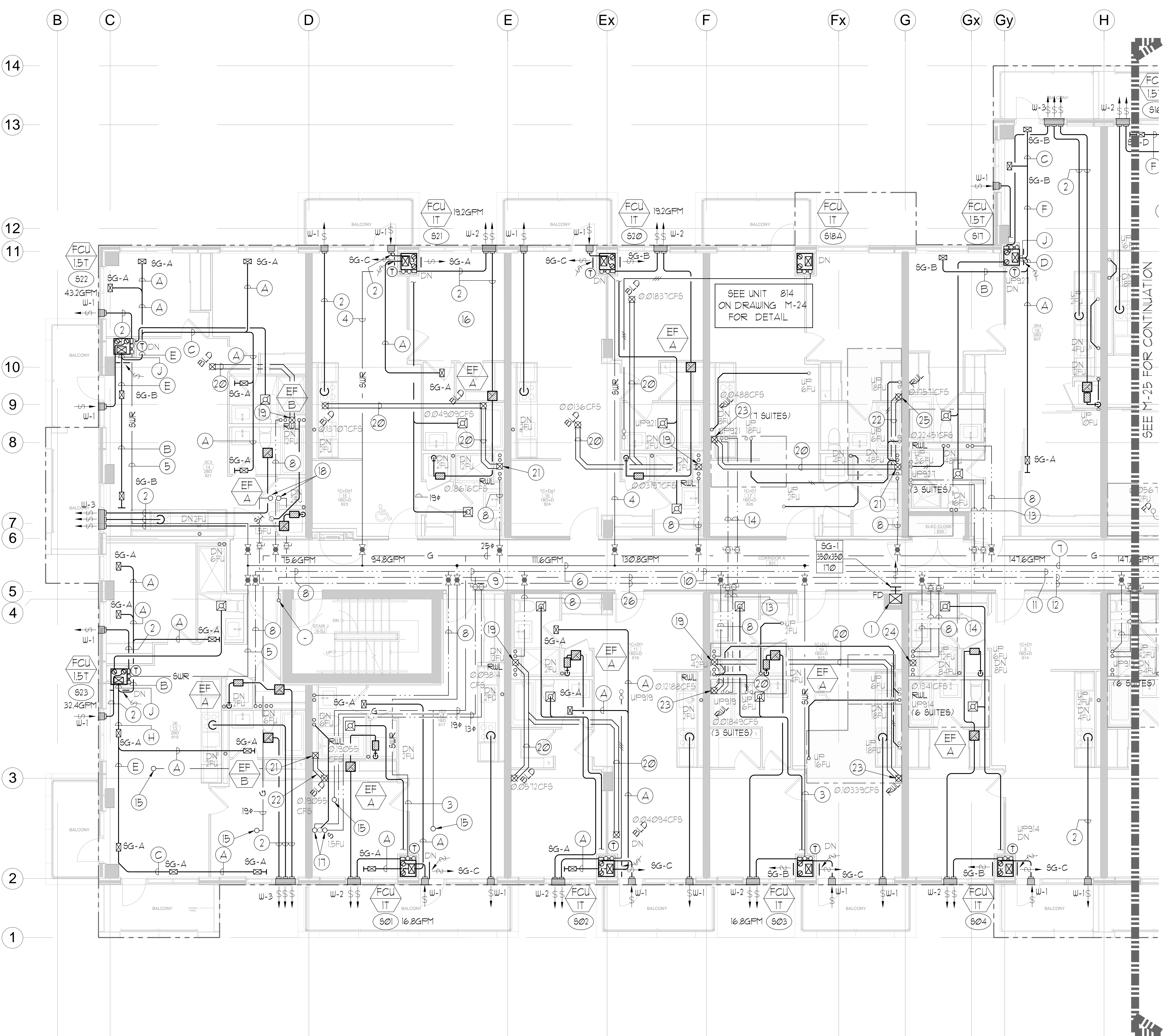
- ALL HORIZONTAL SUPPLY AIR DUCTWORK SHALL BE CAJ 25MM INTERNAL ACOUSTIC LINING AND SHALL BE SUSPENDED ON RUBBER PADS IN THE HANGERS. ELBOWS SHALL BE COMPLETE WITH TURNING VANES.
- ALL SYSTEM DOMESTIC PIPE LOOPS OR OFFSETS WHICH ARE 50MM DIA. AND LARGER SHALL BE ISOLATED USING NEOPRENE-N-SHEAR HANGERS, AND ADDITIONAL 25 MM THICK RIBBED OR WAFFLED NEOPRENE PADS IN THE SADDLES OF CLEVIS HANGERS.
- ALL PIPES SMALLER THAN 50MM DIA. SHALL BE ISOLATED WITH 5MM THICK RIBBED OR WAFFLED RUBBER PADS IN HANGER SADDLES.

GENERAL NOTES:

- CONTRACTOR SHALL CO-ORDINATE ARCHITECTURAL, STRUCTURAL, LIGHTING, HVAC, SPRINKLER DRAWINGS TO AVOID AREAS OF CONFLICT AND TO MAINTAIN CEILING HEIGHTS.
- CONTRACTOR SHALL REPORT ALL DISCREPANCIES AND AREA OF CONFLICTS TO THE ENGINEER PRIOR TO WORK BEGINS.
- PROVIDE EXPANSION CHAMBERS FOR ALL KITCHEN SINKS.
- SEE INSTALLATION DETAILS DRAWING FOR WASHER DOM. H/C WATER, SANITARY CONNECTION DETAILS.
- SUPPLY AND INSTALL COMPLETE DOMESTIC HOT AND COLD WATER LINES, SANITARY AND VENT LINES TO EACH FIXTURE, EQUIPMENT INCLUDING WATER CLOSETS, LAVATORIES, BATHS, SHOWERS, KITCHEN SINK, WASHING MACHINES, DISHWASHERS, AND FLOOR DRAINS, KITCHEN SINK, LAVATORIES, WATER CLOSETS AND WASHING MACHINE. TO BE CAJ LOCALIZED SHUT-OFF VALVES.
- ALL VENT PIPE INSTALLATION TO COMPLY WITH PLUMBING CODES.
- FOR D.H.C. W. RISER SIZES, REFER TO RISER DIAGRAM
- FIRE DAMPERS ARE REQUIRED TO BE LISTED AND ARE TO HAVE FIRE PROTECTION RATING OF THE PENETRATED FIRE SEPARATION.
- THE PIPING PENETRATING THE VARIOUS FIRE SEPARATION IS REQUIRED TO BE FIRESTOPPED WITH A LISTED FIRESTOPPING MATERIAL IN ACCORDANCE WITH CBC ARTICLE 3.13.1
- THE FIRE HOSE CABINET THAT ARE RECESSED INTO THE EXIT STAIR SHAFTS ARE REQUIRED TO BE SEPARATED FROM THE EXIT STAIR BY A 2 HR FIRE SEPARATION.
- NO FLEXIBLE DUCT SHALL BE USED FOR ANY IN-SUITE DUCTWORK.
- PROVIDE 25MM EXTERNAL INSULATION TO ENTIRE FRESH AIR DUCT FROM EXTERIOR WALL TO ERV FAN COIL UNIT.
- DRYER EXHAUST DUCT SHALL BE SMOOTH AND CORROSION-RESISTANT MATERIAL. (FLEXIBLE CONNECTION IS NOT ACCEPTABLE.)

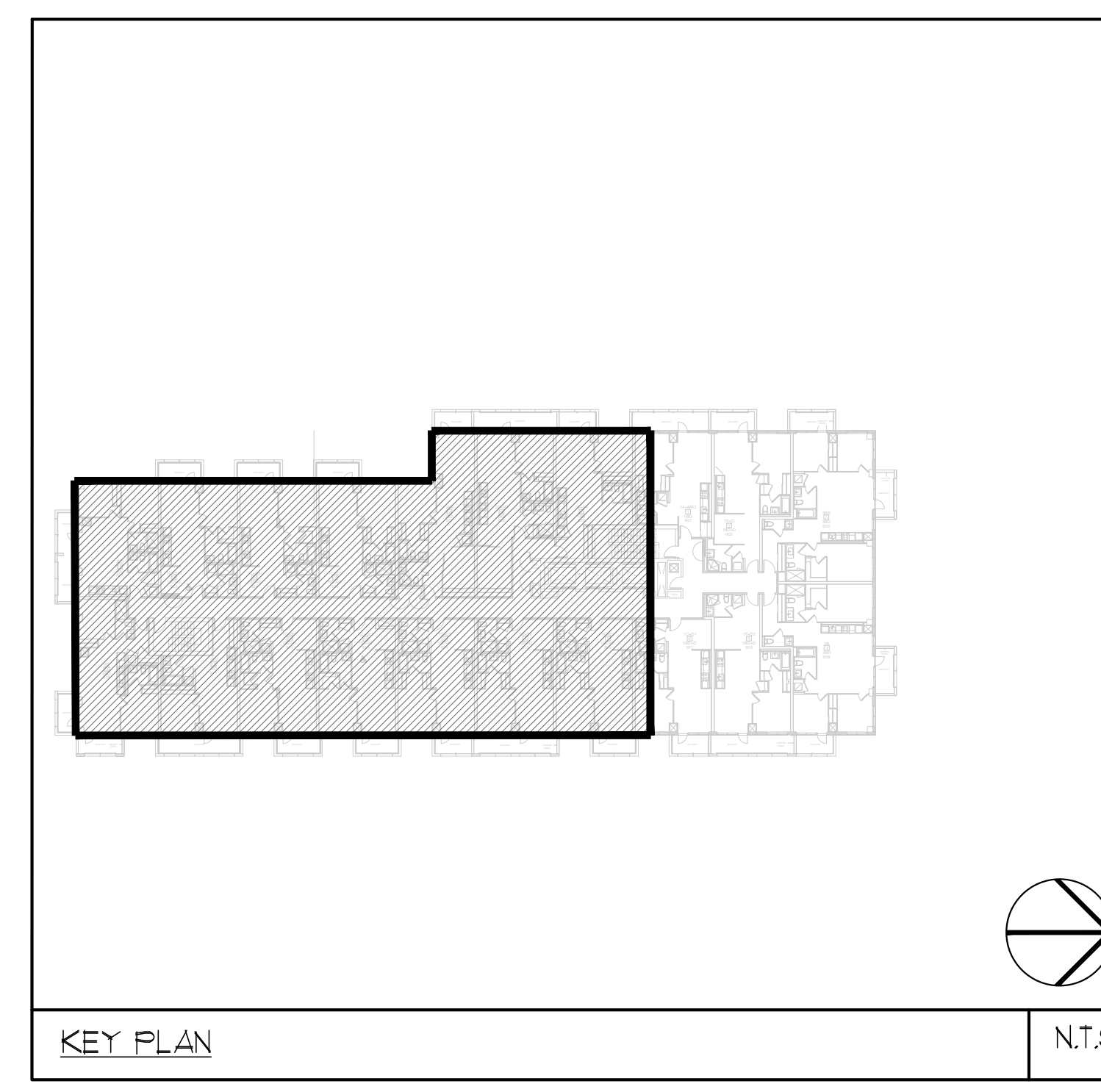
LEGEND MECHANICAL

SYMBOL	DESCRIPTION
[Symbol]	SUPPLY AIR DRYER
[Symbol]	SUPPLY AIR TRAP
[Symbol]	LINEAR SUPPLY DUCTWORK
[Symbol]	THERMISTAT
[Symbol]	FAN MOTOR
[Symbol]	RETURN AIR GRILLE
[Symbol]	EXHAUST AIR GRILLE
[Symbol]	SUPPLY DUCT UP
[Symbol]	SUPPLY DUCT DOWN
[Symbol]	RETURN DUCT UP
[Symbol]	RETURN DUCT DOWN
[Symbol]	EXHAUST DUCT UP
[Symbol]	EXHAUST DUCT DOWN
[Symbol]	FIRE DAMPER
[Symbol]	BALANCING DAMPER
[Symbol]	MOTORIZED DAMPER
[Symbol]	ROTORIZED FIRE DAMPER
[Symbol]	BACKDRIFT DAMPER
[Symbol]	OPPOSED BLADE VALVE CONTROL DAMPER
[Symbol]	TURNING VANES
[Symbol]	FLEXIBLE CONNECTION
[Symbol]	ACOUSTIC INSULATION
[Symbol]	TYPE OF EQUIPMENT
[Symbol]	SMALLER OR DIFFERENT BEAK SIZE
[Symbol]	ANGLE (1/4" OR 1/2")
[Symbol]	STARTER (3 PHASE / PHASE)
[Symbol]	IN-SUITE ERV WATER BAY
[Symbol]	FAN SWITCH / IN-SUITE ERV OVERRIDE BUTTON
[Symbol]	CO SENSOR
[Symbol]	GAS LINE
[Symbol]	GAS METER
[Symbol]	GAS SOLE
[Symbol]	PRESSURE REDUCING VALVE
[Symbol]	SANITARY ABOVE GRADE
[Symbol]	SANITARY BELOW GRADE
[Symbol]	STORM ABOVE GRADE
[Symbol]	STORM BELOW GRADE
[Symbol]	DOMESTIC COLD WATER
[Symbol]	DOMESTIC HOT WATER
[Symbol]	DOMESTIC HOT WATER RECIRCULATION
[Symbol]	SANITARY VENT
[Symbol]	WATER METER
[Symbol]	FLOOR DRAIN
[Symbol]	RUNNEL FLOOR DRAIN
[Symbol]	ALB DRAIN
[Symbol]	ROOF DRAIN
[Symbol]	ALB DRAIN
[Symbol]	AREA DRAIN
[Symbol]	BLAD B1-LEVEL AREA DRAIN
[Symbol]	CATCH BASIN
[Symbol]	SANITARY TRAP
[Symbol]	ELBOW UP
[Symbol]	ELBOW DOWN
[Symbol]	FLOOR CLEANOUT
[Symbol]	FLOOR CLEANOUT
[Symbol]	HOSE BIB
[Symbol]	NON-PRESSURE HOSE BIB
[Symbol]	SHOWER VALVE
[Symbol]	GATE VALVE
[Symbol]	BALL VALVE
[Symbol]	BUTTERFLY VALVE
[Symbol]	PRESSURE REDUCING VALVE
[Symbol]	CHUCK VALVE
[Symbol]	CAP
[Symbol]	COMPRESSED AIR OUTLET
[Symbol]	BACKUP PRESSURE
[Symbol]	CIRCUIT BALANCING VALVE
[Symbol]	TEMP. SENS. (DENOTES NO. OF PIPES)
[Symbol]	TEMPERATURE SENSOR
[Symbol]	TEMPERATURE
[Symbol]	1-WAY MODULATING VALVE
[Symbol]	3-WAY MODULATING VALVE
[Symbol]	17-1/2" THERMOWELL
[Symbol]	C/J 1/2" BUSHING 4 1/2" PLUG
[Symbol]	FLOOR ELEVATION ABOVE LEVEL
[Symbol]	HEADROOM FLOOR TO CEILING



CLEAR FLOOR TO UNDERLAB = 3050mm
 CLEAR PRODUCT = 2100mm
 COMPLETE DROP CEILING = 350mm
 UNITS 016/017/019/021/023/024: DRAINS FROM AMENITY TERRACE ON 9/F

- NOTES:**
- SOUTH F/A SHUNT FROM G/F TO 8/F. DUCT SERVING CORRIDOR FROM G/F TO 8/F. SEE PRESSURIZATION / VENTILATION RISER DIAGRAM FOR DETAILS.
 - 150# KITCHEN / DRYER / W/R / FCU INTAKE / FCU EXHAUST DUCT. (TYPICAL UNLESS OTHERWISE NOTED)
 - 32# SUR.
 - 38# SUR.
 - 50# SUR.
 - 63# SUR.
 - 75# SUR.
 - 19# DHWR.
 - 25# DHWR.
 - 32# DHWR.
 - 38# DHWR.
 - 50# DCW 4 38# DHW.
 - 32# DCW 4 25# DHW.
 - 38# DCW 4 32# DHW.
 - 19# GAS PIPE UP TO SERVE BBQ ON 9/F.
 - FOR FUTURE USE
 - 13# DCW 4 DHW UP TO SERVE (1) SINK ON 9/F - AMENITY SPACE.
 - 13# DCW 4 DHW UP TO SERVE (1) SHOWER ON 9/F - AMENITY SPACE.
 - 100# RUL DOWN.
 - 100# STM 01#.
 - 150# RUL DOWN.
 - 150# STM 01#.
 - 100# RUL FROM ABOVE.
 - 100# RUL FROM ABOVE AND DOWN.
 - 150# RUL FROM ABOVE.
 - 32# DCW 4 25 DHW.
 - 25# DCW UP TO SERVE POOL MECHANICAL ROOM ON 9/F - AMENITY SPACE.



NOVA

175 West Beaver Creek Road Unit 31
 Richmond Hill, Ontario L4B 3M1
 Tel: 905 882-5445
 Fax: 905 882-5441

PROJECT TITLE
8/F SOUTH MECHANICAL LAYOUT

PROJECT NO.
 8/F ALEXANDRA PARK BLOCK II
 38 CAMERON STREET TORONTO ONTARIO

DATE: FEB, 13 1313
 DRAWING NUMBER: M-24 OF 43