

UNIT	NAME	AREA (SQ. FT.)	* OF UR	* OF POWDER	SIZE (T)	FIXTURE UNITS	BR	SQ. FT./T
914	1C-D	530	2	0	1	16	1	530
919	2A-DTR	855	2	1	15	22	2	510
921	2A-DT	855	2	1	15	22	2	510
921	2KA	780	2	0	15	16	2	510

GRILLE SIZING TABLE			VERTICAL FAN COIL SIZE		
DESIGNATION	SIZE	L/S (BALANCE OFFERED)	DESIGNATION	MODEL	W x D
SG-A	300x100	41-10	FCU-1T	450	500x660
SG-B	300x150	71-93	FCU-15T	600	500x660
SG-C	400x150	94-140	FCU-2T	800	500x660
SG-D	450x150	141-188	FCU-25T	1000	550x660
EG-A	150x150	35	FCU-3T	1200	550x660
W-1	225x200	210mm(L)	NOTE: A MIN. OF 125mm IS REQUIRED ON THE SIDE OF PIPE RISER		
W-2	475x200	INSULATED			
W-3	675x200	WALL BOX			

DUCT SIZING TABLE (4.06 m/s, 200 FPM)					
DESIGNATION	L/S	DUCT SIZE	DESIGNATION	L/S	DUCT SIZE
A	41	100x150	G	109	350x150
B	71	150x150	H	236	450x150
C	94	200x150	J	283	500x150
D	118	200x150	K	330	600x150
E	141	250x150	L	371	500x200
F	165	300x150			

- GENERAL NOTES:**
- CONTRACTOR SHALL CO-ORDINATE ARCHITECTURAL, STRUCTURAL, LIGHTING, HVAC, SPRINKLER DRAWINGS TO AVOID AREAS OF CONFLICT AND TO MAINTAIN CEILING HEIGHTS.
 - CONTRACTOR SHALL REPORT ALL DISCREPANCIES AND AREA OF CONFLICTS TO THE ENGINEER PRIOR TO WORK BEGINS.
 - PROVIDE EXPANSION CHAMBERS FOR ALL KITCHEN SINKS.
 - SEE INSTALLATION DETAILS DRAWING FOR WASHER, D.O.M., H.C. WATER, SANITARY CONNECTION DETAILS.
 - SUPPLY AND INSTALL COMPLETE DOMESTIC HOT AND COLD WATER LINES, SANITARY AND VENT LINES TO EACH FIXTURE EQUIPMENT INCLUDING WATER CLOSETS, LAVATORIES, BATHS, SHOWERS, KITCHEN SINK, WASHING MACHINES, DISHWASHERS, AND FLOOR DRAINS, KITCHEN SINK, LAVATORIES, WATER CLOSETS AND WASHING MACHINE TO BE C/W LOCALIZED SHUT-OFF VALVES.
 - ALL VENT PIPE INSTALLATION TO COMPLY WITH PLUMBING CODES.
 - FOR D.H.C. W. RISER SIZES, REFER TO RISER DIAGRAM
 - FIRE DAMPERS ARE REQUIRED TO BE LISTED AND ARE TO HAVE FIRE PROTECTION RATING OF THE PENETRATED FIRE SEPARATION.
 - THE PIPING PENETRATING THE VARIOUS FIRE SEPARATION IS REQUIRED TO BE FIRESTOPPED WITH A LISTED FIRESTOPPING MATERIAL IN ACCORDANCE WITH OBC ARTICLE 3.13.1
 - THE FIRE HOSE CABINET THAT ARE RECESSED INTO THE EXIT STAIR SHAFTS ARE REQUIRED TO BE SEPARATED FROM THE EXIT STAIR BY A 2 HR. FIRE SEPARATION.
 - NO FLEXIBLE DUCT SHALL BE USED FOR ANY IN-SUITE DUCTWORK.
 - PROVIDE 25MM EXTERNAL INSULATION TO ENTIRE FRESH AIR DUCT FROM EXTERIOR WALL TO ERY FAN COIL UNIT.
 - DRYER EXHAUST DUCT SHALL BE SMOOTH AND CORROSION-RESISTANT MATERIAL (FLEXIBLE CONNECTION IS NOT ACCEPTABLE).
- ACOUSTIC NOTES:**
- ALL SYSTEM/DOMESTIC PIPE LOOPS OR OFFSETS WHICH ARE 50MM DIA. AND LARGER SHALL BE ISOLATED USING NEOPRENE-IN-SHEAR HANGERS, AND ADDITIONAL 25 MM THICK RIBBED OR WAFFLED NEOPRENE PADS IN THE SADDLES OF CLEVIS HANGERS.
 - ALL PIPES SMALLER THAN 50MM DIA. SHALL BE ISOLATED WITH 5MM THICK RIBBED OR WAFFLED RUBBER PADS IN HANGER SADDLES.
- CLEAR FLOOR TO UNDERSLAB = 2850mm
ALL UNITS CLEAR PRODUCT = 2800mm
EXCEPT UNITS: 305/308 CLEAR PRODUCT = 2100mm
UNITS 305/308/319/321: DRAINS FROM TERRACE ON 10/F

LEGEND MECHANICAL

SYMBOL	DESCRIPTION
[Symbol]	SUPPLY AIR DRYER
[Symbol]	SUPPLY AIR TRAP
[Symbol]	LINEAR SUPPLY DIFFUSER
[Symbol]	THERMOSTAT
[Symbol]	FAN MOTOR
[Symbol]	RETURN AIR GRILLE
[Symbol]	EXHAUST AIR GRILLE
[Symbol]	SUPPLY DUCT UP
[Symbol]	SUPPLY DUCT DOWN
[Symbol]	RETURN DUCT UP
[Symbol]	RETURN DUCT DOWN
[Symbol]	EXHAUST DUCT UP
[Symbol]	EXHAUST DUCT DOWN
[Symbol]	FIRE DAMPER
[Symbol]	BALANCING DAMPER
[Symbol]	MOTORIZED DAMPER
[Symbol]	MOTORIZED FIRE DAMPER
[Symbol]	BACKDRIFT DAMPER
[Symbol]	OPPOSED BLADE VOLUME CONTROL DAMPER
[Symbol]	TURNING VANES
[Symbol]	FLEXIBLE CONNECTION
[Symbol]	ACOUSTIC INSULATION
[Symbol]	TYPE OF EQUIPMENT
[Symbol]	TYPE OF CONNECTION
[Symbol]	TYPE OF GRILLE OR GRILL
[Symbol]	SMALL SIZE OR DIFFERENT SIZE
[Symbol]	ANGLE (1/4" OR 1/2")
[Symbol]	STARTER (3 PHASE / PHASE)
[Symbol]	FAN SWITCH / IN-SUITE ERY OVERRIDE BUTTON
[Symbol]	CO SENSOR
[Symbol]	GAS LINE
[Symbol]	GAS METER
[Symbol]	GAS SOON
[Symbol]	PRESSURE REDUCING VALVE
[Symbol]	SANITARY ABOVE GRADE
[Symbol]	SANITARY BELOW GRADE
[Symbol]	STORM ABOVE GRADE
[Symbol]	STORM BELOW GRADE
[Symbol]	DOMESTIC COLD WATER
[Symbol]	DOMESTIC HOT WATER
[Symbol]	DOMESTIC HOT WATER RECIRCULATION
[Symbol]	SANITARY VENT
[Symbol]	WATER METER
[Symbol]	FLOOR DRAIN
[Symbol]	RUNNEL FLOOR DRAIN
[Symbol]	ICE DRAIN
[Symbol]	ROOF DRAIN
[Symbol]	BLD. LAB DRAIN
[Symbol]	LAB DRAIN
[Symbol]	BLD. AREA DRAIN
[Symbol]	BLD. AREA DRAIN
[Symbol]	CATCH BASIN
[Symbol]	SANITARY TRAP
[Symbol]	ELBOW UP
[Symbol]	ELBOW DOWN
[Symbol]	WALL CLEANDOUT
[Symbol]	FLOOR CLEANDOUT
[Symbol]	HOSE BIBB
[Symbol]	NON-FREEZE HOSE BIBB
[Symbol]	SHOWER VALVE
[Symbol]	GATE VALVE
[Symbol]	BALL VALVE
[Symbol]	BUTTERFLY VALVE
[Symbol]	PRESSURE REDUCING VALVE
[Symbol]	CHIEF VALVE
[Symbol]	CAP
[Symbol]	COMPRESSED AIR OUTLET
[Symbol]	BACKFLOW PREVENTER
[Symbol]	CIRCUIT BALANCING VALVE
[Symbol]	MULTIPLE PIPES
[Symbol]	DENOTES NO. OF PIPES
[Symbol]	TEMPERATURE SENSOR
[Symbol]	THERMISTOR
[Symbol]	1-WAY MODULATING VALVE
[Symbol]	3-WAY MODULATING VALVE
[Symbol]	17-WAY THERMOMETER
[Symbol]	C/W 1/2" BUSHING 4 1/2" PLUG
[Symbol]	FLOOR ELEVATION ABOVE LEVEL
[Symbol]	HEADROOM FLOOR TO CEILING

NOTES:

- 150# KITCHEN / DRYER / W/R / FCU INTAKE / FCU EXHAUST DUCT. (TYPICAL UNLESS OTHERWISE NOTED)
- FOR FUTURE USE
- FOR FUTURE USE
- 13# GAS PIPE C/W VALVE AND CAP FOR BEQ.
- 13# DCW FOR NFHB TO BE CONNECTED TO SUITE'S MAIN DCW LINE.
- 13# DCW # DHW FROM BELOW TO SERVE (1) SINK.
- 13# DCW # DHW FROM BELOW TO SERVE (1) SHOWER.
- 100# R/W FROM ABOVE.
- 100# R/W DOWN.
- 100# 5TM @1%.
- 150# R/W DOWN.
- 25# DCW FROM BELOW TO SERVE POOL MECHANICAL ROOM.

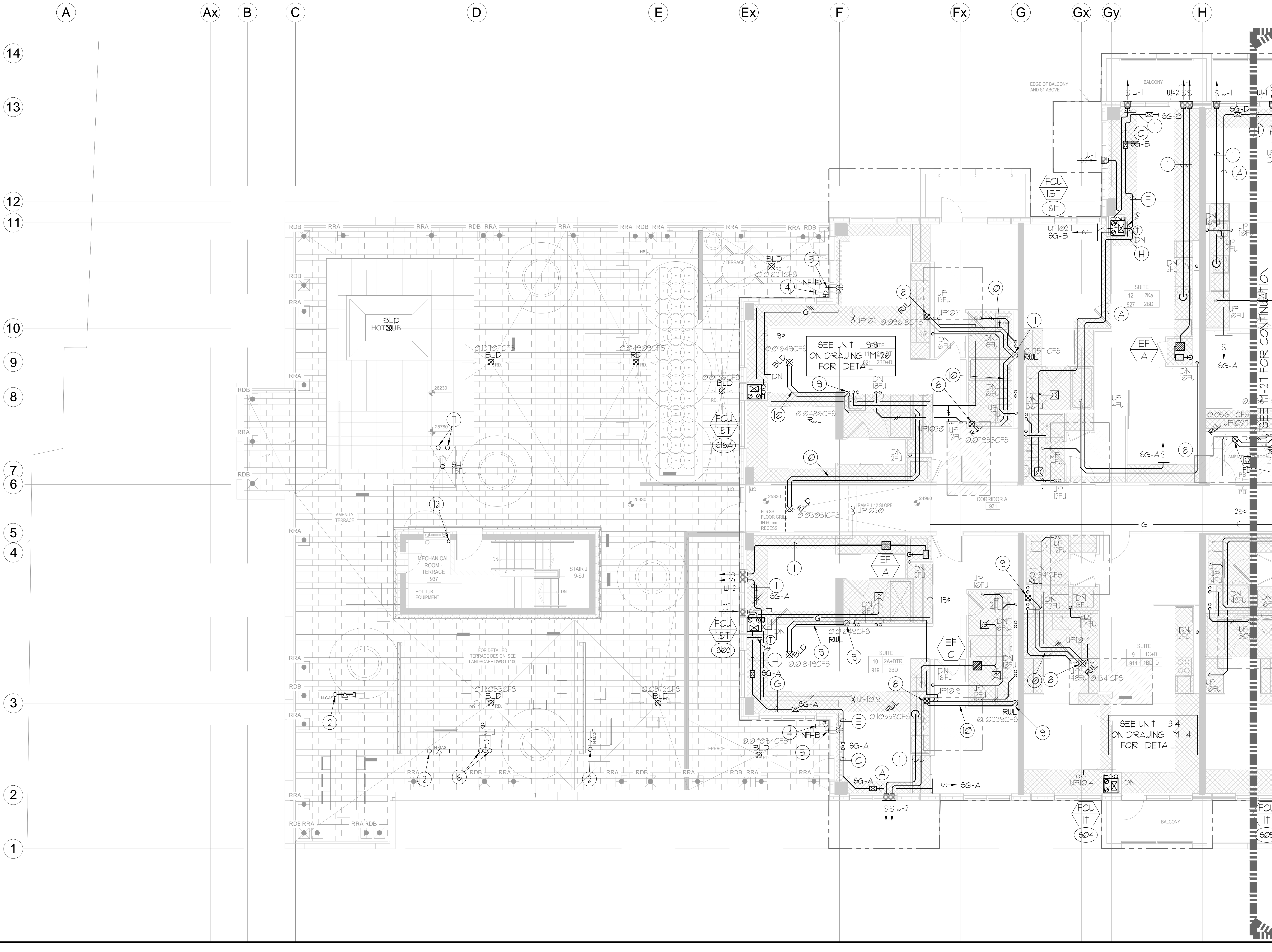
REVISIONS

NO.	DESCRIPTION	DATE
1	ISSUED FOR PERMIT	EP
2	ISSUED FOR PERMIT	EP
3	ISSUED FOR PERMIT	EP

NOVA ENGINEERING
175 West Beaver Creek Road Unit 31
Richmond Hill, Ontario L4B 3M1
Tel: 905-882-5445
Fax: 905-882-5441

PROJECT TITLE: 3/F SOUTH MECHANICAL LAYOUT
BLOCK II
38 CAMERON STREET
TORONTO ONTARIO

DATE: FEB. 13 2013
PROJECT NUMBER: 1313
DRAWING NUMBER: M-26



Drawing name: \\20250000\Projects\131313 - Alexandra Park\131313 - Mechanical Layout\01.dwg Plot Date: Sep 09, 2014 - 8:09am