

UNIT	NAME	AREA (SQ. FT.)	# OF UR	# OF POWDER	SIZE (T)	FIXTURE UNITS	BR	SQ. FT/T
901	1A-MR	525	2	0	1	16	1	525
902	1E-D4	660	2	0	1	16	1	660
905	3BR3	980	2	1	2	22	1	490
908	3B	980	2	1	2	22	2	490
910	F-D3	660	2	0	1	16	1	660
911	1C-D	590	2	0	1	16	1	590
912	1C-D2	590	2	0	1	16	1	590
913	1C-D3	590	2	0	1	16	1	590
928	2U	660	1	0	15	10	2	440
929	1A-M2	580	1	0	1	10	1	580

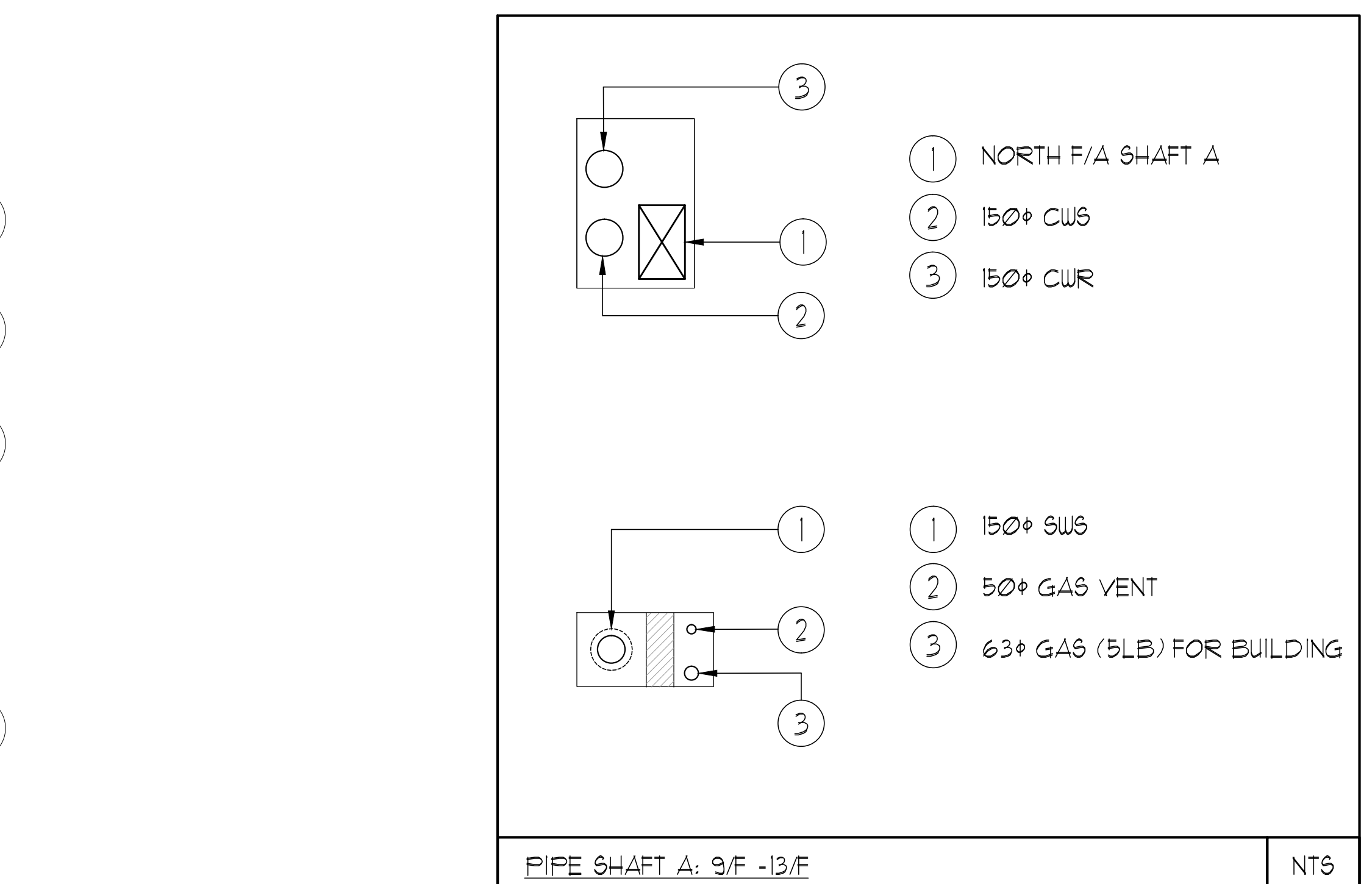
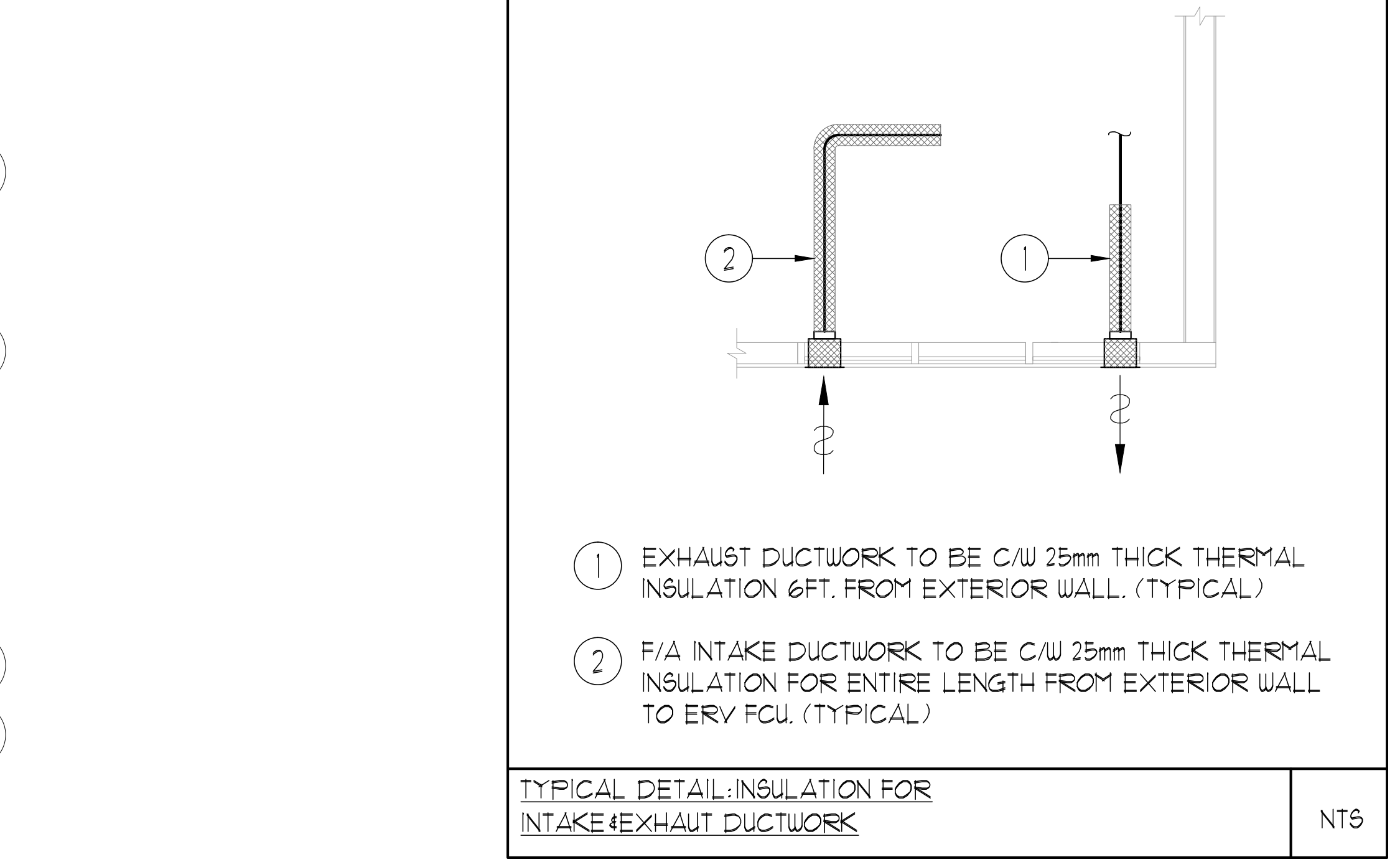
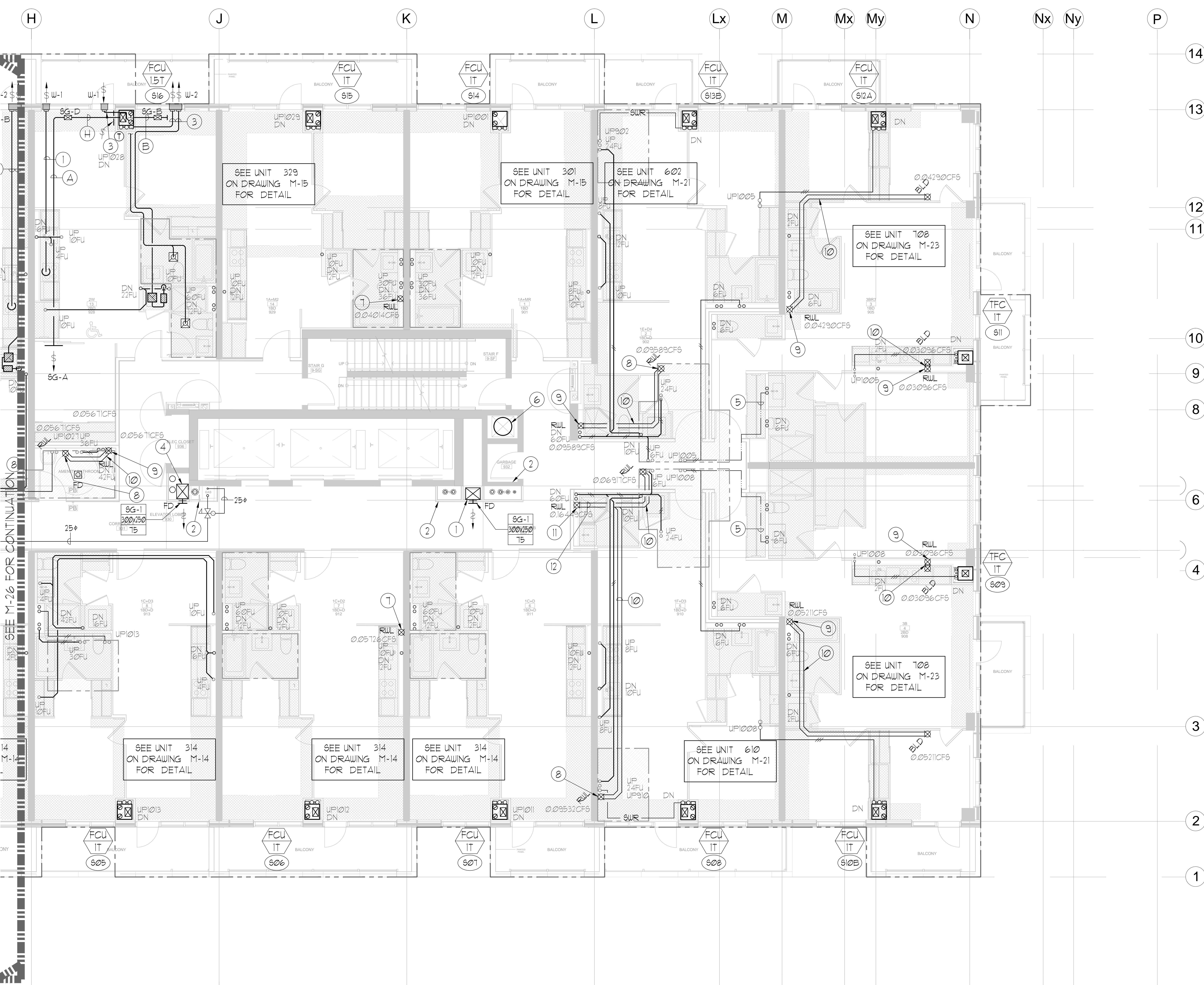
GRILLE SIZING TABLE			VERTICAL FAN COIL SIZE		
DESIGNATION	SIZE	L/S (UNLESS OTHERWISE SPECIFIED)	DESIGNATION	MODEL	W x D
SG-A	300x100	41-70	FCU-1T	450	500x660
SG-B	300x150	71-93	FCU-15T	600	500x660
SG-C	400x150	94-140	FCU-2T	800	500x660
SG-D	450x150	141-188	FCU-2.5T	1000	550x660
EG-A	150x150	35	FCU-3T	1200	550x660
W-1	225x200	210mm(L)	NOTE: A MIN. OF 125mm IS REQUIRED ON THE SIDE OF PIPE RISER.		
W-2	475x200	INSULATED			
W-3	675x200	WALL BOX			

DUCT SIZING TABLE			DUCT SIZING TABLE		
DESIGNATION	L/S	DUCT SIZE	DESIGNATION	L/S	DUCT SIZE
(A)	41	100x150	(G)	103	350x150
(B)	71	150x150	(H)	236	450x150
(C)	94	200x150	(J)	283	500x150
(D)	118	200x150	(K)	330	600x150
(E)	141	250x150	(L)	377	500x200
(F)	165	300x150			

- GENERAL NOTES:
- CONTRACTOR SHALL CO-ORDINATE ARCHITECTURAL, STRUCTURAL, LIGHTING, HVAC, SPRINKLER DRAWINGS TO AVOID AREAS OF CONFLICT AND TO MAINTAIN CEILING HEIGHTS.
 - CONTRACTOR SHALL REPORT ALL DISCREPANCIES AND AREA OF CONFLICTS TO THE ENGINEER PRIOR TO WORK BEGINS.
 - PROVIDE EXPANSION CHAMBERS FOR ALL KITCHEN SINKS.
 - SEE INSTALLATION DETAILS DRAWING FOR WASHER, D.O.M, H.C WATER, SANITARY CONNECTION DETAILS.
 - SUPPLY AND INSTALL COMPLETE DOMESTIC HOT AND COLD WATER LINES, SANITARY AND VENT LINES TO EACH FIXTURE EQUIPMENT INCLUDING WATER CLOSETS, LAVATORIES, BATHS, SHOWERS, KITCHEN SINK, WASHING MACHINES, DISHWASHERS, AND FLOOR DRAINS, KITCHEN SINK, LAVATORIES, WATER CLOSETS AND WASHING MACHINE TO BE C/W LOCALIZED SHUT-OFF VALVES.
 - ALL VENT PIPE INSTALLATION TO COMPLY WITH PLUMBING CODES.
 - FOR D.H.C. W. RISER SIZES, REFER TO RISER DIAGRAM
 - FIRE DAMPERS ARE REQUIRED TO BE LISTED AND ARE TO HAVE FIRE PROTECTION RATING OF THE PENETRATED FIRE SEPARATION.
 - THE PIPING PENETRATING THE VARIOUS FIRE SEPARATION IS REQUIRED TO BE FIRESTOPPED WITH A LISTED FIRESTOPPING MATERIAL IN ACCORDANCE WITH OBC ARTICLE 3.13.1
 - THE FIRE HOSE CABINET THAT ARE RECESSED INTO THE EXIT STAIR SHAFTS ARE REQUIRED TO BE SEPARATED FROM THE EXIT STAIR BY A 2 HR FIRE SEPARATION.
 - NO FLEXIBLE DUCT SHALL BE USED FOR ANY IN-SUITE DUCTWORK.
 - PROVIDE 25MM EXTERNAL INSULATION TO ENTIRE FRESH AIR DUCT FROM EXTERIOR WALL TO ERV FAN COIL UNIT.
 - DRYER EXHAUST DUCT SHALL BE SMOOTH AND CORROSION-RESISTANT MATERIAL (FLEXIBLE CONNECTION IS NOT ACCEPTABLE).

LEGEND MECHANICAL

SYMBOL	DESCRIPTION
[Symbol]	SUPPLY AIR RISER
[Symbol]	SUPPLY AIR RISER
[Symbol]	LINEAR SUPPLY DIFFUSER
[Symbol]	FAN MOTOR
[Symbol]	RETURN AIR GRILLE
[Symbol]	EXHAUST AIR GRILLE
[Symbol]	SUPPLY DUCT UP
[Symbol]	SUPPLY DUCT DOWN
[Symbol]	RETURN DUCT UP
[Symbol]	RETURN DUCT DOWN
[Symbol]	EXHAUST DUCT UP
[Symbol]	EXHAUST DUCT DOWN
[Symbol]	FIRE DAMPER
[Symbol]	BALANCING DAMPER
[Symbol]	MOTORIZED DAMPER
[Symbol]	MOTORIZED FIRE DAMPER
[Symbol]	BACKDRIFT DAMPER
[Symbol]	OPPOSED BLADE VALVE CONTROL DAMPER
[Symbol]	COUPLING JOINT
[Symbol]	TUNING VANES
[Symbol]	FLEXIBLE CONNECTION
[Symbol]	ACOUSTIC INSULATION
[Symbol]	TYPE OF EQUIPMENT
[Symbol]	EQUIPMENT IDENTIFICATION
[Symbol]	TYPE OF GRILLE OR GRILLE
[Symbol]	SMALL SIZE OR DIFFERENT SIZE
[Symbol]	ANGLE (1/4" OR 1/2")
[Symbol]	STARTER (3 PHASE / PHASE)
[Symbol]	FAN MOTOR / IN-SUITE ERV OVERSPEED BUTTON
[Symbol]	CO SENSOR
[Symbol]	GAS LINE
[Symbol]	GAS METER
[Symbol]	GAS SOLE
[Symbol]	PRESSURE REDUCING VALVE
[Symbol]	SANITARY ABOVE GRADE
[Symbol]	SANITARY BELOW GRADE
[Symbol]	STORM ABOVE GRADE
[Symbol]	STORM BELOW GRADE
[Symbol]	DOMESTIC COLD WATER
[Symbol]	DOMESTIC HOT WATER
[Symbol]	DOMESTIC HOT WATER RECIRCULATION
[Symbol]	SANITARY VENT
[Symbol]	WATER METER
[Symbol]	FLOOR DRAIN
[Symbol]	RUNNEL FLOOR DRAIN
[Symbol]	ROOF DRAIN
[Symbol]	AREA DRAIN
[Symbol]	B-LABEL B-LABEL AREA DRAIN
[Symbol]	CATCH BASIN
[Symbol]	SANITARY TRAP
[Symbol]	ELBOW UP
[Symbol]	ELBOW DOWN
[Symbol]	WALL CLEANOUT
[Symbol]	FLOOR CLEANOUT
[Symbol]	HOSE BIBB
[Symbol]	NON-FREEZE HOSE BIBB
[Symbol]	GATE VALVE
[Symbol]	BALL VALVE
[Symbol]	BUTTERFLY VALVE
[Symbol]	PRESSURE REDUCING VALVE
[Symbol]	CHECK VALVE
[Symbol]	CAP
[Symbol]	COMPRESSED AIR OUTLET
[Symbol]	BACKFLOW PREVENTER
[Symbol]	CIRCUIT BALANCING VALVE
[Symbol]	TEMPERATURE SENSOR
[Symbol]	TEMPERATURE
[Symbol]	3-WAY MODULATING VALVE
[Symbol]	3-WAY MODULATING VALVE
[Symbol]	17-1/4" (4") THERMOPHYSICAL
[Symbol]	C/W 1" BUSHING 4 1/2" PLUG
[Symbol]	FLOOR ELEVATION ABOVE LEVEL
[Symbol]	HEADROOM FLOOR TO CEILING



- ACOUSTIC NOTES:
- ALL SYSTEM/DOMESTIC PIPE LOOPS OR OFFSETS WHICH ARE 50MM DIA. AND LARGER SHALL BE ISOLATED USING NEOPRENE-IN-SHEAR HANGERS AND ADDITIONAL 25 MM THICK RIBBED OR WAFFLED NEOPRENE PADS IN THE SADDLES OF CLEVIS HANGERS.
 - ALL PIPES SMALLER THAN 50MM DIA. SHALL BE ISOLATED WITH 5MM THICK RIBBED OR WAFFLED RUBBER PADS IN HANGER SADDLES.

- NOTES:
- NORTH F/A SHAFT B FROM G/F TO 14/F. F/A DUCT SERVING CORRIDOR FROM G/F TO 14/F. SEE PRESSURIZATION / VENTILATION RISER DIAGRAM FOR DETAILS.
 - PIPE SHAFT - REFER TO PIPE DIAGRAM FOR DETAILS.
 - 150# KITCHEN / DRYER / W/R / FCU INTAKE / FCU EXHAUST DUCT. (TYPICAL UNLESS OTHERWISE NOTED)
 - NORTH F/A SHAFT A FROM G/F TO 14/F. F/A DUCT SERVING CORRIDOR FROM G/F TO 14/F. SEE PRESSURIZATION / VENTILATION RISER DIAGRAM FOR DETAILS.
 - 13# DHWR
 - 600# GARBAGE CHUTE.
 - 100# RWL FROM ABOVE AND DOWN.
 - 100# RWL FROM ABOVE.
 - 100# RWL DOWN.
 - 100# 6TM #16.
 - 150# RWL DOWN.
 - 150# 6TM #16.

KEY PLAN

NTS

NOVA

175 West Beaver Creek Road Unit 31
Richmond Hill, Ontario L4B 3M1
Tel: 905-882-5445
Fax: 905-882-5441

PROJECT TITLE
9/F NORTH MECHANICAL LAYOUT

DATE: FEB. 13 2013

DRAWING NUMBER: M-21

REVISIONS

NO.	DESCRIPTION	DATE

CONTRACTOR MUST CHECK AND VERIFY ALL DIMENSIONS AND CONDITIONS ON THE JOB BEFORE COMMENCING WORK. THIS DRAWING IS THE PROPERTY OF THE ENGINEER AND NOT TO BE REPRODUCED FROM COPIES OF THE WORK. DRAWINGS ARE NOT TO BE SCALED.

DATE: 07/10/14

PROJECT TITLE: 9/F NORTH MECHANICAL LAYOUT

DATE: FEB. 13 2013

DRAWING NUMBER: M-21