

UNIT	NAME	AREA (SQ. FT.)	* OF WR	* OF POWDER	SIZE (T)	FIXTURE UNITS	BR	SQ. FT/7
1101	1A-MR	525	1	0	1	10	1	525
1105	3AT	870	2	0	2	16	3	435
1108	3ATR	870	2	1	2	22	3	435
1111	1C-D2	590	2	0	1	16	1	590
1112	1C-D	590	2	0	1	16	1	590
1113	1C1	500	1	0	1	10	1	500
1114	5I	440	1	0	15	10	STUDIO	293
1119	2J	140	2	0	15	16	2	493
1120	1H	530	1	0	1	10	1	530
1121	2JR	140	2	0	15	16	2	493
1121	1K	545	1	0	1	10	1	545
1128	2B1	605	1	1	1	16	2	605
1129	1A-M	580	1	0	1	10	1	580

- GENERAL NOTES:**
- CONTRACTOR SHALL CO-ORDINATE ARCHITECTURAL, STRUCTURAL, LIGHTING, HYAC, SPRINKLER DRAWINGS TO AVOID AREAS OF CONFLICT AND TO MAINTAIN CEILING HEIGHTS.
 - CONTRACTOR SHALL REPORT ALL DISCREPANCIES AND AREA OF CONFLICTS TO THE ENGINEER PRIOR TO WORK BEGINS.
 - PROVIDE EXPANSION CHAMBERS FOR ALL KITCHEN SINKS.
 - SEE INSTALLATION DETAILS DRAWING FOR WASHER, DOM. H.C WATER, SANITARY CONNECTION DETAILS.
 - SUPPLY AND INSTALL COMPLETE DOMESTIC HOT AND COLD WATER LINES, SANITARY AND VENT LINES TO EACH FIXTURE EQUIPMENT INCLUDING WATER CLOSETS, LAVATORIES, BATHS, SHOWERS, KITCHEN SINK, WASHING MACHINES, DISHWASHERS, AND FLOOR DRAINS, KITCHEN SINK, LAVATORIES, WATER CLOSETS AND WASHING MACHINE TO BE C/U LOCALIZED SHUT-OFF VALVES.
 - ALL VENT PIPE INSTALLATION TO COMPLY WITH PLUMBING CODES.
 - FOR D.H.C. W. RISER SIZES, REFER TO RISER DIAGRAM
 - FIRE DAMPERS ARE REQUIRED TO BE LISTED AND ARE TO HAVE FIRE PROTECTION RATING OF THE PENETRATED FIRE SEPARATION.
 - THE PIPING PENETRATING THE VARIOUS FIRE SEPARATION IS REQUIRED TO BE FIRESTOPPED WITH A LISTED FIRESTOPPING MATERIAL IN ACCORDANCE WITH OBC ARTICLE 3.13.1
 - THE FIRE HOSE CABINET THAT ARE RECESSED INTO THE EXIT STAIR SHAFTS ARE REQUIRED TO BE SEPARATED FROM THE EXIT STAIR BY A 2 HR. FIRE SEPARATION.
 - NO FLEXIBLE DUCT SHALL BE USED FOR ANY IN-SUITE DUCTWORK.
 - PROVIDE 25MM EXTERNAL INSULATION TO ENTIRE FRESH AIR DUCT FROM EXTERIOR WALL TO ERV FAN COIL UNIT.
 - DRYER EXHAUST DUCT SHALL BE SMOOTH AND CORROSION-RESISTANT MATERIAL (FLEXIBLE CONNECTION IS NOT ACCEPTABLE).

LEGEND MECHANICAL

SYMBOL	DESCRIPTION
[Symbol]	SUPPLY AIR DRYER
[Symbol]	SUPPLY AIR TRAP
[Symbol]	LINEAR SUPPLY DIFFUSER
[Symbol]	THERMOSTAT
[Symbol]	FAN MOTOR
[Symbol]	RETURN AIR GRILLE
[Symbol]	EXHAUST AIR GRILLE
[Symbol]	SUPPLY DUCT UP
[Symbol]	SUPPLY DUCT DOWN
[Symbol]	RETURN DUCT UP
[Symbol]	RETURN DUCT DOWN
[Symbol]	EXHAUST DUCT UP
[Symbol]	EXHAUST DUCT DOWN
[Symbol]	FIRE DAMPER
[Symbol]	BALANCING DAMPER
[Symbol]	MOTORIZED DAMPER
[Symbol]	MOTORIZED FIRE DAMPER
[Symbol]	BACKDRIFT DAMPER
[Symbol]	OPPOSED BLADE VOLUME CONTROL DAMPER
[Symbol]	C/U LOCALIZED SHUT-OFF
[Symbol]	TUNING VANES
[Symbol]	FLEXIBLE CONNECTION
[Symbol]	ACOUSTIC INSULATION
[Symbol]	TYPE OF EQUIPMENT
[Symbol]	EQUIPMENT CONNECTION
[Symbol]	TYPE OF GRILLE OR GRILLE
[Symbol]	SMALL SIZE OR OTHER BEAK SIZE
[Symbol]	ANGLE (1/4" OR 1/2")
[Symbol]	STARTER (3 PHASE / PHASE)
[Symbol]	FAN SWITCH / IN-SUITE ERV OVERRIDE BUTTON
[Symbol]	CO SENSOR
[Symbol]	GAS LINE
[Symbol]	GAS METER
[Symbol]	GAS SOCK
[Symbol]	PRESSURE REDUCING VALVE
[Symbol]	SANITARY ABOVE GRADE
[Symbol]	SANITARY BELOW GRADE
[Symbol]	STORM ABOVE GRADE
[Symbol]	STORM BELOW GRADE
[Symbol]	DOMESTIC COLD WATER
[Symbol]	DOMESTIC HOT WATER
[Symbol]	DOMESTIC HOT WATER RECIRCULATION
[Symbol]	SANITARY VENT
[Symbol]	WATER METER
[Symbol]	FLOOR DRAIN
[Symbol]	RUNNEL FLOOR DRAIN
[Symbol]	ALB DRAIN
[Symbol]	ROOF DRAIN
[Symbol]	BLAD DRAIN
[Symbol]	AREA DRAIN
[Symbol]	BLAD B1-LEVEL AREA DRAIN
[Symbol]	CATCH BASIN
[Symbol]	SANITARY TRAP
[Symbol]	ELBOW UP
[Symbol]	ELBOW DOWN
[Symbol]	WALL CLEANOUT
[Symbol]	FLOOR CLEANOUT
[Symbol]	HOSE BIBB
[Symbol]	NON-FREEZE HOSE BIBB
[Symbol]	GATE VALVE
[Symbol]	BALL VALVE
[Symbol]	BUTTERFLY VALVE
[Symbol]	PRESSURE REDUCING VALVE
[Symbol]	CHOKER VALVE
[Symbol]	CAP
[Symbol]	COMPRESSED AIR OUTLET
[Symbol]	BACKFLOW PREVENTER
[Symbol]	CIRCUIT BALANCING VALVE
[Symbol]	TEMPERATURE SENSOR
[Symbol]	TEMPERATURE SENSOR
[Symbol]	17-1/2" THERMOWELL
[Symbol]	3-WAY MODULATING VALVE
[Symbol]	3-WAY MODULATING VALVE
[Symbol]	C/U 1" BUILDING 4 1/2" PLUG
[Symbol]	FLOOR ELEVATION ABOVE LEVEL
[Symbol]	HEADROOM FLOOR TO CEILING

- ACOUSTIC NOTES:**
- ALL SYSTEM/DOMESTIC PIPE LOOPS OR OFFSETS WHICH ARE 50MM DIA. AND LARGER SHALL BE ISOLATED USING NEOPRENE-IN-SHEAR HANGERS, AND ADDITIONAL 25 MM THICK RIBBED OR WAFFLED NEOPRENE PADS IN THE SADDLES OF CLEVIS HANGERS.
 - ALL PIPES SMALLER THAN 50MM DIA. SHALL BE ISOLATED WITH 5MM THICK RIBBED OR WAFFLED RUBBER PADS IN HANGER SADDLES.
- CLEAR FLOOR TO UNDERSLAB = 2850mm
 ALL UNITS CLEAR PRODUCT = 2800mm
 EXCEPT UNITS: 1113/1114/1121/1128 CLEAR PRODUCT = 2700mm
 UNITS 1119/1120/1121/1121 CLEAR PRODUCT = 2700mm

- NOTES:**
- NORTH F/A SHAFT A FROM G/F TO 14/F DUCT SERVING CORRIDOR FROM 9/F TO 14/F. SEE PRESSURIZATION / VENTILATION RISER DIAGRAM FOR DETAILS.
 - NORTH F/A SHAFT B SERVING FROM G/F TO 14/F DUCT SERVING CORRIDOR FROM G/F TO 14/F. SEE PRESSURIZATION / VENTILATION RISER DIAGRAM FOR DETAILS.
 - PIPE SHAFT - REFER TO PIPE DIAGRAM FOR DETAILS.
 - 150° KITCHEN / DRYER / W/R / FCU INTAKE / FCU EXHAUST DUCT. (TYPICAL UNLESS OTHERWISE NOTED)
 - 15° DHWR
 - 100° R/WL DOWN
 - 100° R/WL FROM ABOVE
 - 100° R/WL FROM ABOVE AND DOWN
 - 600° GARBAGE CHUTE
 - 15° GAS PIPE C/W VALVE AND CAP FOR BBQ
 - 15° DCW FOR NFHB TO BE CONNECTED TO SUITE'S MAIN DCW LINE

DUCT SIZING TABLE
(4.06 m/s, 800 FPM)

DESIGNATION	L/s	DUCT SIZE	DESIGNATION	L/s	DUCT SIZE
(A)	471	100x150	(G)	189	35x150
(B)	71	150x150	(H)	236	45x150
(C)	94	200x150	(J)	283	50x150
(D)	118	200x150	(K)	330	60x150
(E)	141	250x150	(L)	377	50x200
(F)	165	300x150			

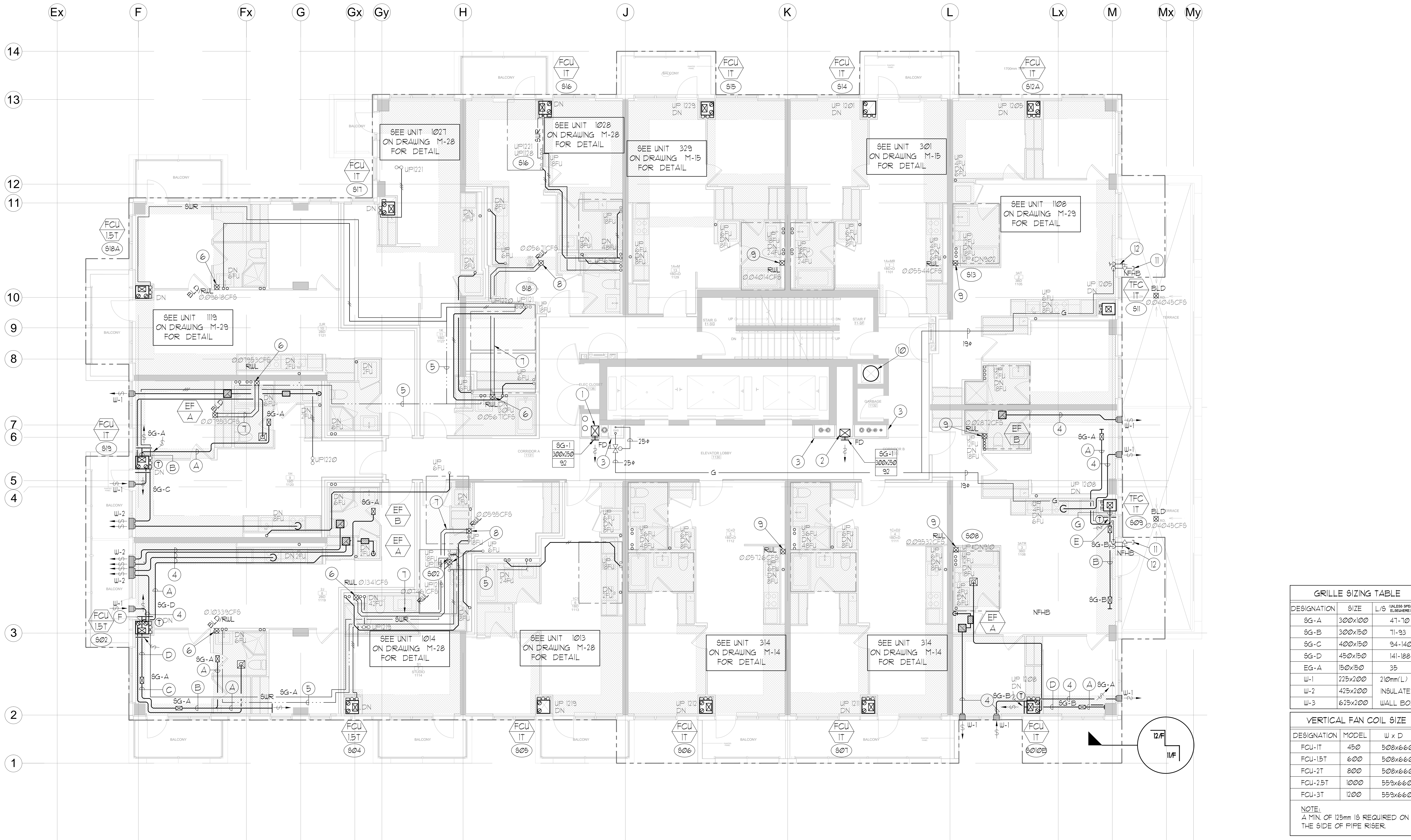
GRILLE SIZING TABLE

DESIGNATION	SIZE	L/S (UNLESS SPECIFIED OTHERWISE)
SG-A	300x100	47-70
SG-B	300x150	71-93
SG-C	400x150	94-140
SG-D	450x150	141-188
EG-A	150x150	35
W-1	225x200	210mm(L)
W-2	425x200	INSULATED
W-3	625x200	WALL BOX

VERTICAL FAN COIL SIZE

DESIGNATION	MODEL	W x D
FCU-IT	450	500x660
FCU-15T	600	500x660
FCU-2T	800	500x660
FCU-25T	1000	550x660
FCU-3T	1200	550x660

NOTE: A MIN. OF 125mm IS REQUIRED ON THE SIDE OF PIPE RISER



REVISIONS

NO.	DESCRIPTION	DATE

CONTRACTOR MUST CHECK AND VERIFY ALL DIMENSIONS AND CONDITIONS ON THE JOB AND REPORT DISCREPANCIES TO THE ENGINEER BEFORE PROCEEDING WITH THE WORK. THIS DRAWING IS THE PROPERTY OF THE ENGINEER AND NOT BE RETURNED FROM COMPLETION OF THE WORK. DRAWINGS ARE NOT TO BE SCALED.

NOVA
MECHANICAL

175 West Beaver Creek Road Unit 31
Richmond Hill, Ontario L4B 3M1
Tel: 905-882-5445
Fax: 905-882-5441

PROJECT TITLE: SG ALEXANDRA PARK BLOCK II
38 CAMERON STREET TORONTO ONTARIO

DATE: FEB 13 1313
DRAWING NUMBER: M-29 OF 43

Drawing name: \\\20250808\Projects\131313 - Alexandra Park\131313 - Mechanical Layout.dwg
 Plotter: Sep 26, 2014 - 9:10am