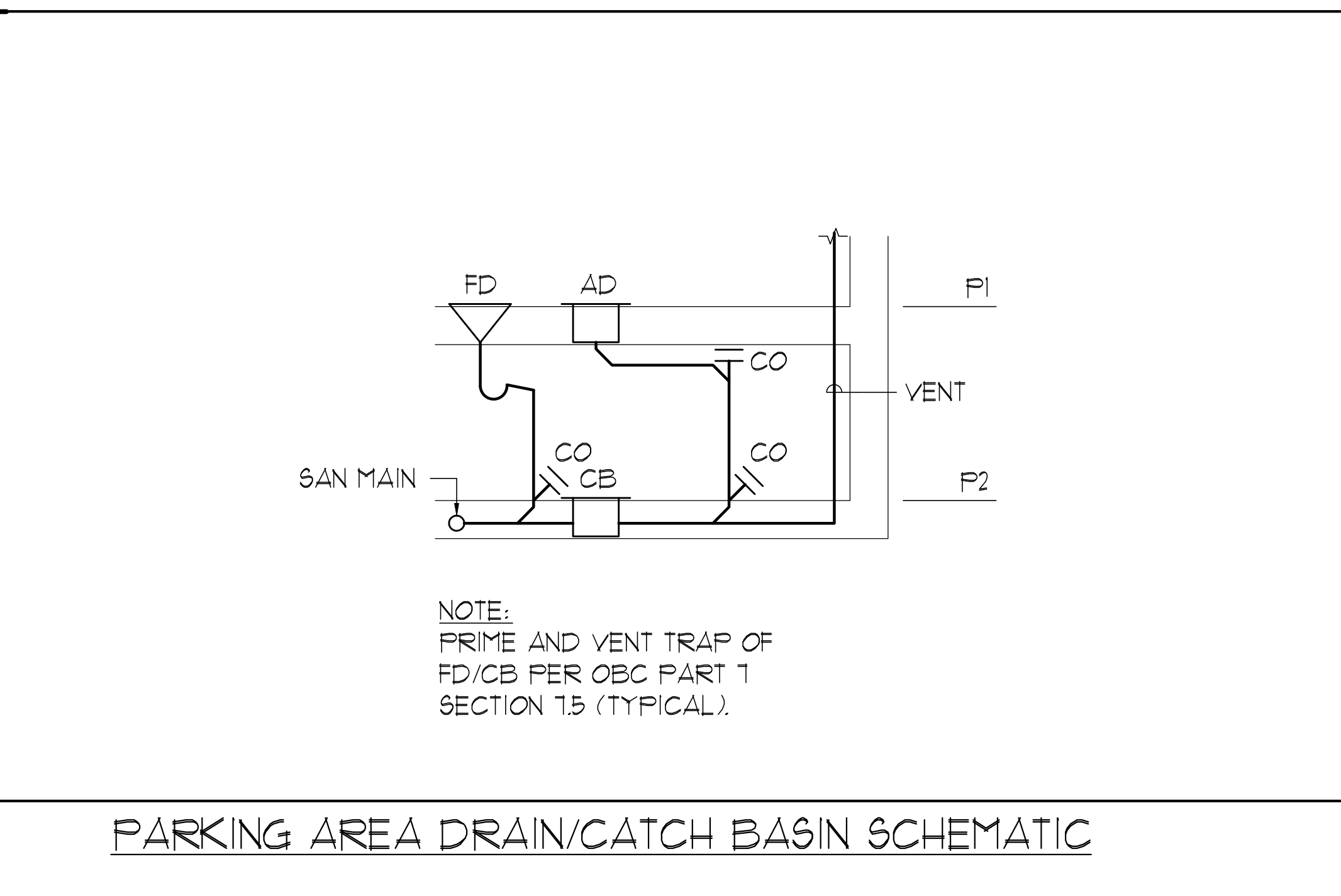
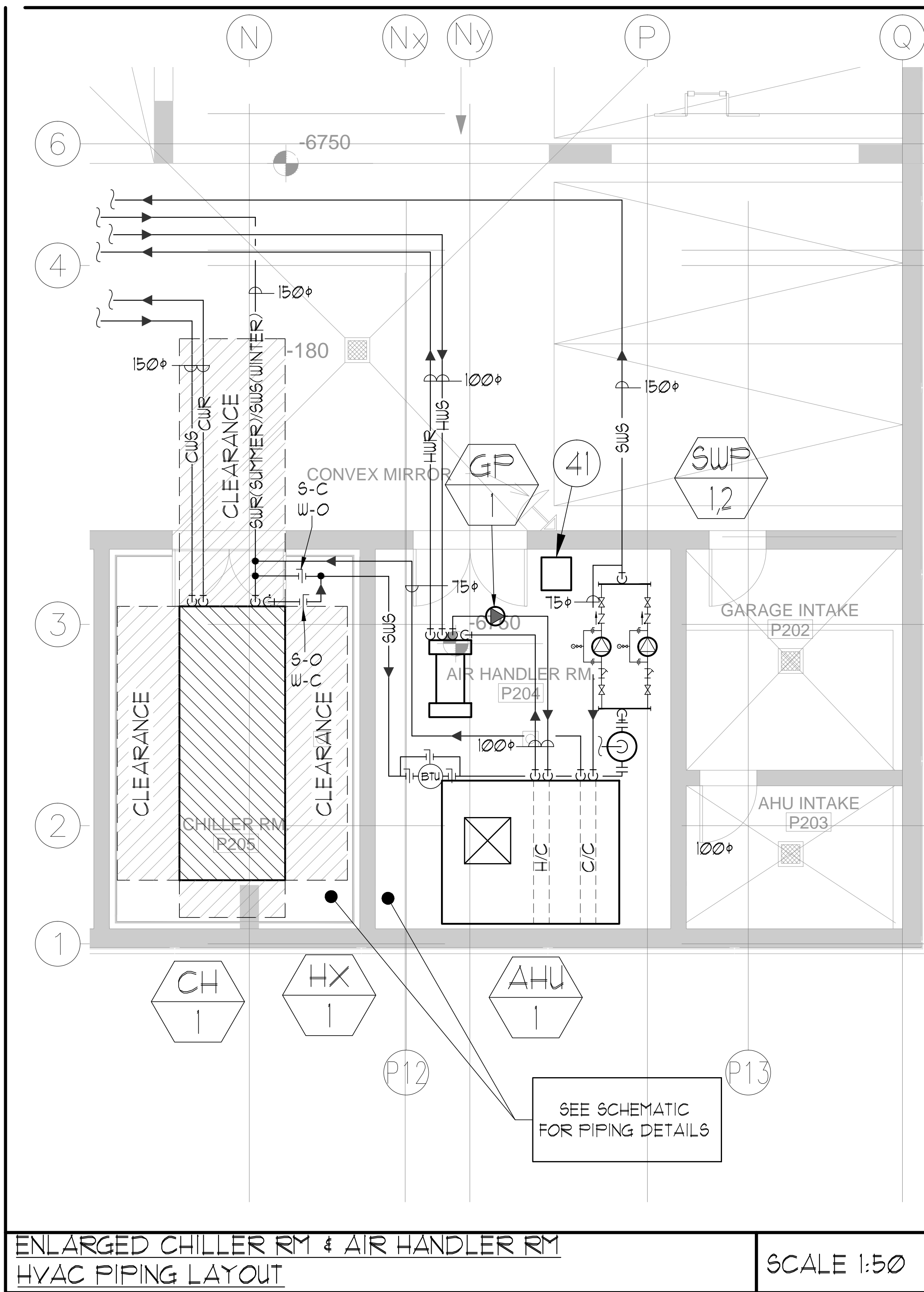


SANITARY PIT SP-1, SP-2

QTY.	DESCRIPTION
2	BARNES 2SE-554L SUBMERSIBLE PUMPS INSIDE A 900MMØ SUMP PIT, EACH C/W 1/2 HP, 575 VOLT, 3 PHASE, 60 CYCLE MOTOR WITH 20 FT POWER CORD, 2" N.P.T. DISCHARGE, HANDLES 2" DIAMETER SOLIDS AND DELIVERS 35 U.S. G.P.M. AT 22 FT TOTAL HEAD.
1	LDP 575 DUPLEX ELECTRICAL ALTERNATOR STARTER AND CONTROL PANEL, WITH LOCKABLE DEAD-FRONT, 575 VOLT, 3 PHASE, 60 CYCLE C/W H.O.A. SELECTOR SWITCHES, RUN LIGHTS, THERMAL OVERLOAD HEATERS TO SUIT PUMP MOTORS WITH RESET BUTTON, AND CIRCUIT BREAKERS IN EEMAC 3R ENCLOSURE.
4	L5 20 MECHANICAL LEVEL SENSORS, 1 FOR PUMP "ON", 1 FOR PUMP "OFF", 1 FOR BOTH PUMPS "ON", AND 1 FOR ALARM LEVEL.
1	LHW 115 HIGH WATER ALARM PANEL, 115 VOLT, 1 PHASE WITH PILOT LIGHT, ON-OFF-TEST SWITCH, BUZZER AND EXTRA RELAY FOR REMOTE SIGNALING, IN EEMAC 1 ENCLOSURE.
1	TRIM BAR CURB FRAME C/W CHECKERED COVER PLATE IN 2 SECTIONS, FOR INSPECTION AND ACCESS.

SANITARY PIT SP-3, SP-4

QTY.	DESCRIPTION
2	BARNES 6GVF-2052L SUBMERSIBLE GRINDER PUMPS INSIDE A 900MMØ SUMP PIT, EACH C/W 2 HP, 575 VOLT, 3 PHASE, 60 CYCLE MOTOR WITH 20 FT POWER CORD, 1.25" N.P.T. DISCHARGE, AND DELIVERS 50 U.S. G.P.M. AT 30 FT TOTAL HEAD.
1	LDP 575 DUPLEX ELECTRICAL ALTERNATOR STARTER AND CONTROL PANEL, WITH LOCKABLE DEAD-FRONT, 575 VOLT, 3 PHASE, 60 CYCLE C/W H.O.A. SELECTOR SWITCHES, RUN LIGHTS, THERMAL OVERLOAD HEATERS TO SUIT PUMP MOTORS WITH RESET BUTTON, AND CIRCUIT BREAKERS IN EEMAC 3R ENCLOSURE.
4	L5 20 MECHANICAL LEVEL SENSORS, 1 FOR PUMP "ON", 1 FOR PUMP "OFF", 1 FOR BOTH PUMPS "ON", AND 1 FOR ALARM LEVEL.
1	LHW 115 HIGH WATER ALARM PANEL, 115 VOLT, 1 PHASE WITH PILOT LIGHT, ON-OFF-TEST SWITCH, BUZZER AND EXTRA RELAY FOR REMOTE SIGNALING, IN EEMAC 1 ENCLOSURE.
1	TRIM BAR CURB FRAME C/W CHECKERED COVER PLATE IN 2 SECTIONS, FOR INSPECTION AND ACCESS.



- 31) F/A DUCT SHALL BE C/W 25MM EXTERNAL INSULATION IN ANY UNHEATED AREAS.
- 32) 150x500 EXHAUST DUCT BELOW RAMP AND ENTER RESIDENTIAL STORAGE ROOM AT HIGH LEVEL IN P-1. FOR CONTINUATION SEE DRAWING M-4.
- 33) WIRING SHALL BE CONNECTED TO UH-A AT HIGH LEVEL.
- 34) WIRING SHALL BE CONNECTED TO EF-10 LOCATED IN 2/F (LOADING).
- 35) 150° CUS & R FROM ABOVE.
- 36) SEE ENLARGED CHILLER ROOM & AIR HANDLER ROOM FOR PIPING CONNECTION ON THIS DRAWING.
- 37) 100° & R UP FROM ABOVE.
- 38) 150° SUB (WINTER) / SUB (SUMMER) FROM ABOVE.
- 39) 150° SUB UP.
- 40) 1750x100 FRESH AIR DUCT FROM ABOVE. DUCT SHALL BE INSULATED WITH 25MM EXTERNAL INSULATION.
- 41) CHEMICAL TREATMENT FOR CLOSET RE-CIRCULATING SYSTEM. SEE SCHEMATIC FOR DETAILS.
- 42) 1800x500 FRESH AIR INTAKE DUCT FROM AHU TRANSITION TO 1000x1750.

ACOUSTIC NOTES:

- 1) ALL PIPES 50 MM AND LARGER SHALL BE ISOLATED USING 12 MM RUBBER PADS IN THE SADDLES OF CLEVIS HANGERS.
- 2) ALL MAIN VERTICAL PIPE RISERS REQUIRE VIBRATION ISOLATION. NONE OF THESE PIPES MAY TOUCH THE SLAB OR ANY PENETRATED PARTITION. ALL RISER ANCHORS MUST INCLUDE 1-INCH THICK VIBRATION ISOLATION PADS, TO BE HELD IN PLACE WITH HORIZONTAL STEEL PLATES WELDED TO BRACKETS THAT ARE IN TURN WELDED TO THE RISER. BOLTING THROUGH THE PADS IS NOT ACCEPTABLE.
- 3) FOR THE MAIN RISERS, ANY PIPE GUIDES USED IN CONNECTION WITH EXPANSION JOINTS OR LOOPS MUST BE ISOLATED WITH RUBBER PADS AND SLEEVES WHERE FASTENED TO THE BUILDING STRUCTURE.
- 4) IN-LINE AND CABINET FANS SHOULD BE ISOLATED WITH SPRINGS OR NEOPRENE-IN-SHEAR MOUNTS. SIDEWALL FANS SHOULD BE ISOLATED USING NEOPRENE MOUNTS, PADS OR GROMMETS. ALL FANS SUSPENDED ON F1 LEVEL SHALL BE WELL ISOLATED USING ISOLATORS INCORPORATING BOTH A SPRING ELEMENT AND A SECONDARY NEOPRENE-IN-SHEAR ELEMENT IN SERIES. DUCTWORK SHALL BE DE-COUPLED FROM FAN BY FLEXIBLE CONNECTORS.
- 5) ALL RUBBER PADS OR MOUNTS USED TO ISOLATE PIPES SHOULD BE 45 DUROMETER OR LOWER.
- 6) ACOUSTICS PANELS ARE REQUIRED TO BE OF NONCOMBUSTIBLE MATERIAL OR MEET FLAME-SPREAD RATINGS TESTED IN ACCORDANCE WITH CANULC-5102 "TESTING FOR SURFACE BURNING CHARACTERISTICS OF BUILDING MATERIALS AND ASSEMBLIES."
- 7) SPLIT HEAT PUMP OR SPLIT AC SYSTEM CONDENSERS SHOULD BE MOUNTED WITH RUBBER PADS. REFRIGERANT PIPING BETWEEN THE TWO SHOULD BE ISOLATED AT POINTS OF SUPPORT OUTSIDE OF THE ARMAFLEX WRAP AROUND THE PIPE, OR A SECTION OF SUCH WRAP SHOULD BE INCLUDED AT ANY POINT OF SUSPENSION.
- 8) DOMESTIC COLD WATER BOOSTER PUMP SHALL BE ISOLATED FROM THE SLAB WITH 1" THICK RUBBER PADS/NSN AND A TWIN-SPHERE RUBBER EXPANSION JOINT, WITH HIGH PRESSURE RATINGS (MASON SPEC) HIGH PRESSURE OR EQUIVALENT) USED ON BOTH INLET AND DISCHARGE PIPING CONNECTIONS TO THE BOOSTER SET. RUBBER EXPANSION JOINT TO BE RATED FOR POTABLE/DRINKING WATER USE. DCUBP VFD SHALL BE MOUNTED ON RUBBER PADS.
- 9) ALL PIPE HANGERS FOR THE MAIN DCU LINE SHALL BE ISOLATED USING NEOPRENE-IN-SHEAR HANGERS FOR THE FIRST 10 POINTS OF SUPPORT FROM THE PUMPS, AND USING 12 MM RUBBER PADS IN THE SADDLES OF CLEVIS HANGERS IN ALL OTHER POINTS OF SUPPORT TO THE MAIN VERTICAL RISER LOCATION.
- 10) ALL PIPES 50 MM AND BELOW SUPPORTED FROM WITHIN MECHANICAL ROOMS SHOULD BE ISOLATED WITH THICK RUBBER PADS, OR FOAM RUBBER SLEEVES IN PIPE CLAMPS, POT FEEDERS, FRYS AND OTHER ANCILLARY EQUIPMENT MUST BE SIMILARLY ISOLATED.
- 11) AT THE MECHANICAL ROOM, ALL PIPING PENETRATIONS THROUGH PARTITIONS SHOULD NOT HAVE DIRECT CONTACT WITH THE WALLS OR CEILING. PIPES SHALL BE WRAPPED IN MINERAL WOOL AND THE OPENING SHALL BE CAULKED.
- 12) AT THE MECHANICAL ROOM, IF ANY H/C PIPES MUST BE SUSPENDED FROM ABOVE, THE PIPES SHOULD BE SUSPENDED USING UPGRADED VIBRATION ISOLATION HANGERS INCLUDING SPRINGS WITH AT LEAST 3MM STATIC DEFLECTION, NEOPRENE-IN-SHEAR ELEMENTS IN SERIES (ADDITIONAL 6MM DEFLECTION), AND RUBBER PADS IN HANGER SADDLES (6MM THICK MINIMUM).
- 13) SUP SHALL BE DECOUPLED FROM THE ATTACHED PIPING USING TWIN-SPHERE RUBBER EXPANSION JOINTS ON BOTH THE SUCTION AND DISCHARGE SIDES. SECONDARY TWIN-SPHERE JOINTS SHOULD ALSO BE USED FOR SUP PIPING WHERE THEY EXIT THE MECHANICAL ROOM FOR VIL PUMPS. THESE EXPANSION JOINTS ARE TYPICALLY LOCATED IN THE VERTICAL SECTION ABOVE THE SUCTION STRAINER AND SHUT-OFF VALVE. THE PUMPS AND DIRECTLY ATTACHED PIPING (UP TO THE TWIN-SPHERE JOINT) SHALL BE MOUNTED ON CONCRETE INERTIA BASES, AND ISOLATED FROM THE STRUCTURAL SLAB BELOW USING SPRING ISOLATORS WITH MINIMUM 30 MM STATIC DEFLECTION AND 25 MM THICK NSN PADS UNDER THE SPRING BASE, PROPERLY LOADED.
- 14) SMALL PUMPS SHALL BE ISOLATED USING NEOPRENE-IN-SHEAR ISOLATORS FOR THE FIRST 3 POINTS OF SUPPORT ON EITHER SIDE OF THE PUMP.
- 15) ALL PUMPS (OTHER THAN THE DCUBP) SHALL BE MOUNTED ON ND MOUNTS FROM MASON INDUSTRIES OR EQUAL. STANDARD WAFFLE PADS WILL NOT BE SUFFICIENT.
- 16) ALL AHU/FAU/MAU SHALL BE MOUNTED ON DOUBLE LAYER (NSN) PADS BETWEEN UNIT CASING AND HOUSEKEEPING PAD. ALL UNIT DUCTWORK WITHIN THE MECHANICAL ROOM SHALL BE C/W 25MM INTERNAL ACOUSTIC LINING, 25MM INSULATION AND JACKETING. ALL ASSOCIATED DUCTWORK SHALL BE HUNG BY HANGERS WITH NEOPRENE PADS.
- 17) MAIN FRESH AIR SHAFT TO BE C/W 25MM THICK ACOUSTIC DUCT LINER STARTING FROM THE AHU ROOM AND UP THREE FLOORS.
- 18) CHILLER ROOM IS TO BE CONSTRUCTED WITH A MINIMUM 100MM FLOATING CONCRETE FLOOR ON 50 MM THICK ISOLATORS, DESIGNED FOR A FUNDAMENTAL FREQUENCY OF 10 HZ OR LESS, WITH BATT INSULATION IN THE CAVITY.

THE FLOATING FLOOR DESIGN SHALL INCLUDE SEPARATE CONCRETE PIERS WHICH PENETRATE THE FLOATING FLOOR TO SUPPORT THE CHILLER. THE PAD MATERIAL UNDER THE PIER SHALL BE CDM-42 OR EQUIVALENT.

THE CHILLER BODY SHALL BE ISOLATED FROM THE PIERS USING MULTIPLE-COIL SPRING ISOLATORS HAVING A STATIC DEFLECTION OF APPROXIMATELY 21 PLUS A THICK NOISE PAD UNDER THE SPRING BASE. THE NOISE PAD SHALL CONSIST OF MULTIPLE LAYERS OF RUBBER, MAXIMUM 45 DUROMETER, SEPARATED BY STEEL SHIMS AND TOPPED BY A STEEL LOAD PLATE. THE NOISE PAD SHALL BE SIZED TO ACHIEVE A STATIC DEFLECTION OF APPROXIMATELY Ø3" AT A LOAD EQUAL TO 2/3 OF THE MAXIMUM EXPECTED POINT LOAD OF THE CHILLER.

CHILLER SHALL BE COMPLETE WITH ACOUSTIC BLANKET.
- 19) ALL CONNECTIONS BETWEEN THE CHILLER AND THE ATTACHED PIPING SHALL INCLUDE TWIN-SPHERE RUBBER EXPANSION JOINTS.

GENERAL NOTES:

- 1) CONTRACTOR SHALL CO-ORDINATE ARCHITECTURAL, STRUCTURAL, LIGHTING, HVAC, SFRINKLER DRAWINGS TO AVOID AREAS OF CONFLICT AND TO MAINTAIN CEILING HEIGHTS.
- 2) CONTRACTOR SHALL REPORT ALL DISCREPANCIES AND AREAS OF CONFLICT TO THE ENGINEER PRIOR TO BEGINNING WORK.
- 3) MINIMUM HEAD ROOM IS 2100 mm ABOVE FINISH FLOOR LEVEL.
- 4) WHERE THERE IS A DROPPED CEILING, GAS PIPING SHALL BE HUNG BELOW AND TIGHT TO CEILING.
- 5) ALL EQUIPMENT TO BE INSTALLED PER SPECIFICATION AND MANUFACTURER'S INSTALLATION MANUAL. PROVIDE ACCESS PANEL FOR CONCEALED EQUIPMENT VALVES, ETC.
- 6) ALLOW 3M SEPARATION BETWEEN THE CONNECTION OF THE MAIN SANITARY RISER AND ITS AUXILIARY RISER.
- 7) ALL SANITARY PIPE OUTSIDE OF HEATED CEILING SPACE SHALL BE INSULATED, CANVASSED AND PAINTED.
- 8) ALL VENTS SHALL COMPLY WITH O.B.C. AND PLUMBING CODE.
- 9) FOR STORAGE ROOM VENTILATION SYSTEM, DIV16 TO PROVIDE CONDUIT, WIRING AND SWITCH TO START / STOP FAN & DAMPER. FAN AND 10V ACTUATOR TO BE SUPPLIED AND INSTALLED BY DIV. 15.
- 10) FOR UTILITY ROOM VENTILATION SYSTEM, DIV15 WILL PROVIDE LINE VOLTAGE THERMOSTAT TO DIV16 TO PROVIDE CONDUIT & WIRING TO START/STOP FAN & DAMPER VIA THERMOSTAT. FAN AND 10V ACTUATOR TO BE SUPPLIED AND INSTALLED BY DIV. 15.
- 11) FOR UNIT HEATER, DIV. 15 TO PROVIDE LINE VOLTAGE THERMOSTAT TO DIV. 16. DIV. 16 TO PROVIDE CONDUIT & WIRING TO START/STOP UNIT HEATER.
- 12) FIRE DAMPERS ARE REQUIRED TO BE LISTED AND ARE TO HAVE FIRE-PROTECTION RATING OF THE PENETRATED FIRE SEPARATION.
- 13) THE PIPING PENETRATING THE VARIOUS FIRE SEPARATION IS REQUIRED TO BE FIRESTOPPED WITH A LISTED FIRESTOPPING MATERIAL IN ACCORDANCE WITH OBC ARTICLE 3.13.1.
- 14) DIV. 16 TO PROVIDE START/STOP FOR ALL THE MAIN GARAGE EXHAUST FANS INSIDE CACF ROOM.
- 15) ALL TRAPS & PRIMERS TO BE HEAT TRACED BY DIV16, INSULATED & JACKETED BY THIS CONTRACTOR.

NOTES:

- 1) 3300x3600 (1226 M², 132 FT²) FRESH AIR INTAKE SHAFT FOR P-2 LEVEL.
- 2) 3300x2300 (7.8 M², 84 FT²) FRESH AIR INTAKE SHAFT FOR MAU.
- 3) 2250x1300 (2.93 M², 315 FT²) FRESH AIR SHAFT FOR P-2 LEVEL.
- 4) 5500x2000 (1161 M², 125 FT²) EXHAUST AIR SHAFT FOR P-1 & P-2 LEVEL.
- 5) 3100x2000 WEATHERPROOF INTAKE LOUVRE C/W BIRDSCREEN. (6500 CFM)
- 6) 2000x1500 WEATHERPROOF INTAKE LOUVRE C/W BIRDSCREEN. (8000 CFM)
- 7) 200x100 FRESH AIR DUCT FROM ABOVE C/W FIRE DAMPER AT SLAB.
- 8) 400x100 INTAKE LOUVRE C/W MOTORIZED DAMPER, FIRE DAMPER & WIRE MESH.
- 9) 800x400 INTAKE LOUVRE C/W MOTORIZED DAMPER, FIRE DAMPER & WIRE MESH.
- 10) 800x800 INTAKE LOUVRE C/W MOTORIZED DAMPER, FIRE DAMPER & WIRE MESH.
- 11) 800x400 INTAKE LOUVRE C/W FIRE DAMPER & WIRE MESH.
- 12) 600x400 EXHAUST LOUVRE C/W FIRE DAMPER & WIRE MESH.
- 13) 1200x800 INTAKE LOUVRE C/W MOTORIZED DAMPER, FIRE DAMPER & WIRE MESH.
- 14) 100x350 STAIR PRESSURIZATION DUCT FROM ABOVE C/W FIRE RATED ENCLOSURE, FIRE RATED ENCLOSURE BY OTHERS.
- 15) 150x400 DUCT DOWN TO 450 mm AFFL C/W OPEN END AND WIRE MESH.
- 16) REFRIGERANT MONITORING MASTER & SLAVE PANELS AND SENSOR SLAVE PANEL SHOWING STATUS OF REFRIGERATION MONITORING SYSTEM TO BE MOUNTED OUTSIDE OF CHILLER ROOM, UPON SENSING OF REFRIGERANT LEAKAGE CHILLER WILL BE SHUT DOWN AND EF-10 LOCATED IN 2/F (LOADING) TO BE ACTIVATED TO RUN IN HIGH SPEED.
- 17) ALARM STROBE LIGHT SUPPLIED AND WIRED TO THE REFRIGERANT MONITORING SYSTEM BY MECHANICAL CONTRACTOR.
- 18) 150x100 FRESH AIR DUCT FROM ABOVE C/W FIRE DAMPER AT SLAB.
- 19) 100° SAN FROM ABOVE AND DOWN C/W CLEANOUT AT BASE.
- 20) 100° SAN @ 1%.
- 21) 150° SAN @ 1%.
- 22) SANITARY SUMP PIT. SEE DETAIL ON THIS DRAWING.
- 23) 15° PUMPED SAN UP C/W HEAT TRACING. HEAT TRACING BY DIV. 16. INSULATION AND JACKET BY THIS CONTRACTOR.
- 24) SCUFFER DRAIN.
- 25) BACKWATER VALVE AND CLEANOUT PRIMED & VENTED INSIDE 900Ø MAN-HOLE C/W COVER. SEE DETAIL ON THIS DRAWING.
- 26) ELEVATOR SUMP PIT. SEE DETAIL ON DRAWING M-40.
- 27) 100° SAN DOWN C/W CLEANOUT AT BASE.
- 28) DRAIN TRAP TO BE HEAT TRACED BY DIV. 16. THIS CONTRACTOR TO INSULATE & JACKET (TYPICAL).
- 29) 150x150 F/A DUCT FROM AHU AND TRANSITION TO 2000x650 F/A DUCT IN VERTICAL RUN & UP.
- 30) 2000x650 DUCT BELOW RAMP AND ENTER RESIDENTIAL STORAGE ROOM AT HIGH LEVEL IN P-1 C/W FIRE DAMPER FOR CONTINUATION SEE DRAWING M-4.

LEGEND MECHANICAL

SYMBOL	DESCRIPTION
[Symbol]	SUPPLY AIR DAMPER
[Symbol]	SUPPLY AIR TRAP
[Symbol]	LINEAR SUPPLY DAMPER
[Symbol]	THERMOSTAT
[Symbol]	FAN MOTOR
[Symbol]	RETURN AIR GRILLE
[Symbol]	EXHAUST AIR GRILLE
[Symbol]	SUPPLY DUCT UP
[Symbol]	SUPPLY DUCT DOWN
[Symbol]	RETURN DUCT UP
[Symbol]	RETURN DUCT DOWN
[Symbol]	EXHAUST DUCT UP
[Symbol]	EXHAUST DUCT DOWN
[Symbol]	FIRE DAMPER
[Symbol]	BALANCING DAMPER
[Symbol]	MOTORIZED DAMPER
[Symbol]	MOTORIZED FIRE DAMPER
[Symbol]	BACKDRIFT DAMPER
[Symbol]	OPPOSED BLADE VOLUME CONTROL DAMPER
[Symbol]	COUPLER
[Symbol]	TURNS VALVES
[Symbol]	FLEXIBLE CONNECTION
[Symbol]	ACOUSTIC INSULATION
[Symbol]	TYPE OF EQUIPMENT
[Symbol]	TYPE OF PENETRATION
[Symbol]	TYPE OF CURB OR GRILLE
[Symbol]	SMALL OR OFFER BASK SIZE
[Symbol]	MAN/LOU/GR/SL
[Symbol]	STARTER 3 PHASE / PHASE 1
[Symbol]	IN-RATE SW / IN-RATE SW OVERRIDE BUTTON
[Symbol]	CO SENSOR
[Symbol]	GAS LINE
[Symbol]	GAS PETER
[Symbol]	GAS SOON
[Symbol]	PRESSURE REDUCING VALVE
[Symbol]	SANITARY ABOVE GRADE
[Symbol]	SANITARY BELOW GRADE
[Symbol]	STORM ABOVE GRADE
[Symbol]	STORM BELOW GRADE
[Symbol]	DOPESTIC COLD WATER
[Symbol]	DOPESTIC HOT WATER RECIRCULATION
[Symbol]	SANITARY VENT
[Symbol]	WATER PETER
[Symbol]	FLOOR DRAIN
[Symbol]	ROOF DRAIN
[Symbol]	SLAB DRAIN
[Symbol]	AREA DRAIN
[Symbol]	B1-LEVEL AREA DRAIN
[Symbol]	CATCH BASIN
[Symbol]	SANITARY TRAMP
[Symbol]	ELBOW UP
[Symbol]	ELBOW DOWN
[Symbol]	WALL CLEANOUT
[Symbol]	FLOOR CLEANOUT
[Symbol]	HOSE BIBB
[Symbol]	NON-FREEZE HOSE BIBB
[Symbol]	GATE VALVE
[Symbol]	BALL VALVE
[Symbol]	BUTTERFLY VALVE
[Symbol]	PRESSURE REDUCING VALVE
[Symbol]	CHECK VALVE
[Symbol]	CAP
[Symbol]	COMPRESSED AIR OUTLET
[Symbol]	BACKFLOW PREVENTER
[Symbol]	CIRCUIT BALANCING VALVE
[Symbol]	MULTIPLE PIPES
[Symbol]	DENOTES NO. OF PIPES
[Symbol]	TEMPERATURE SENSOR
[Symbol]	THERMISTOR
[Symbol]	1-SHAY INSULATING VALVE
[Symbol]	3-SHAY INSULATING VALVE
[Symbol]	10-1/4"Ø THERMISTOR
[Symbol]	C/W 1" BUSHING & 1" PLUG
[Symbol]	FLOOR ELEVATION ABOVE LEVEL
[Symbol]	FLOOR ELEVATION BELOW LEVEL
[Symbol]	HEADROOM FLOOR TO CEILING

REVISIONS

NO.	DATE	DESCRIPTION

NOVA ENGINEERING

175 West Beaver Creek Road, Unit 31
Richmond Hill, Ontario L4B 3M1
Tel: 905-882-5445
Fax: 905-882-5441

PROJECT TITLE
60 ALEXANDRA PARK
BLOCK II
38 CAMERON STREET
TORONTO

DATE FEB 13 2013 **SCALE** 1:100 **PROJECT NUMBER** M-3 **DRAWING NUMBER** M-3 OF 43