

UNIT	NAME	AREA (SQ. FT.)	# OF UR	# OF FOLDER	SIZE (T)	FIXTURE UNITS	BR	SQ. FT/IT
1201	1A-MR	525	1	0	1	10	1	525
1205	3A	870	2	0	2	16	3	435
1208	3AR	870	2	0	2	16	3	435
1211	1C-D3	590	2	0	1	16	1	590
1212	1C-D3	590	2	0	1	16	1	590
1219	3BT	895	2	0	2	16	2	448
1220	2B-DT	1000	2	1	15	22	2	66.7
1221	2LTR	155	2	0	15	16	2	503
1229	1A-MI	560	1	0	1	10	1	560

- GENERAL NOTES:**
- CONTRACTOR SHALL CO-ORDINATE ARCHITECTURAL, STRUCTURAL, LIGHTING, HYAC, SPRINKLER DRAWINGS TO AVOID AREAS OF CONFLICT AND TO MAINTAIN CEILING HEIGHTS.
  - CONTRACTOR SHALL REPORT ALL DISCREPANCIES AND AREA OF CONFLICTS TO THE ENGINEER PRIOR TO WORK BEGINS.
  - PROVIDE EXPANSION CHAMBERS FOR ALL KITCHEN SINKS.
  - SEE INSTALLATION DETAILS DRAWING FOR WASHER, DOM. H.C WATER, SANITARY CONNECTION DETAILS.
  - SUPPLY AND INSTALL COMPLETE DOMESTIC HOT AND COLD WATER LINES, SANITARY AND VENT LINES TO EACH FIXTURE EQUIPMENT INCLUDING WATER CLOSETS, LAVATORIES, BATHS, SHOWERS, KITCHEN SINK, WASHING MACHINES, DISHWASHERS, AND FLOOR DRAINS, KITCHEN SINK, LAVATORIES, WATER CLOSETS AND WASHING MACHINE TO BE C/U LOCALIZED SHUT-OFF VALVES.
  - ALL VENT PIPE INSTALLATION TO COMPLY WITH PLUMBING CODES.
  - FOR D.H.C. W. RISER SIZES, REFER TO RISER DIAGRAM
  - FIRE DAMPERS ARE REQUIRED TO BE LISTED AND ARE TO HAVE FIRE PROTECTION RATING OF THE PENETRATED FIRE SEPARATION.
  - THE PIPING PENETRATING THE VARIOUS FIRE SEPARATION IS REQUIRED TO BE FIRESTOPPED WITH A LISTED FIRESTOPPING MATERIAL IN ACCORDANCE WITH OBC ARTICLE 3.13.1
  - THE FIRE HOSE CABINET THAT ARE RECESSED INTO THE EXIT STAIR SHAFTS ARE REQUIRED TO BE SEPARATED FROM THE EXIT STAIR BY A 2 HR. FIRE SEPARATION.
  - NO FLEXIBLE DUCT SHALL BE USED FOR ANY IN-SUITE DUCTWORK.
  - PROVIDE 25MM EXTERNAL INSULATION TO ENTIRE FRESH AIR DUCT FROM EXTERIOR WALL TO ERV FAN COIL UNIT.
  - DRYER EXHAUST DUCT SHALL BE SMOOTH AND CORROSION-RESISTANT MATERIAL (FLEXIBLE CONNECTION IS NOT ACCEPTABLE).

**LEGEND MECHANICAL**

SYMBOL	DESCRIPTION
[Symbol]	SUPPLY AIR DRYER
[Symbol]	SUPPLY AIR TRAP
[Symbol]	LINEAR SUPPLY DIFFUSER
[Symbol]	TEMPERAT
[Symbol]	FAN MOTOR
[Symbol]	RETURN AIR GRILLE
[Symbol]	EXHAUST AIR GRILLE
[Symbol]	SUPPLY DUCT UP
[Symbol]	SUPPLY DUCT DOWN
[Symbol]	RETURN DUCT UP
[Symbol]	RETURN DUCT DOWN
[Symbol]	EXHAUST DUCT UP
[Symbol]	EXHAUST DUCT DOWN
[Symbol]	FIRE DAMPER
[Symbol]	BALANCING DAMPER
[Symbol]	MOTORIZED DAMPER
[Symbol]	MOTORIZED FIRE DAMPER
[Symbol]	BACKDRIFT DAMPER
[Symbol]	OPPOSED BLADE VALVE CONTROL DAMPER
[Symbol]	C/U LOCALIZED SHUT-OFF
[Symbol]	TUNING VANES
[Symbol]	FLEXIBLE CONNECTION
[Symbol]	ACOUSTIC INSULATION
[Symbol]	TYPE OF EQUIPMENT
[Symbol]	EQUIPMENT CONNECTION
[Symbol]	TYPE OF GRILLE OR GRILLE
[Symbol]	SMALLER OR DIFFERENT SIZE
[Symbol]	ANALOG (O/R) OR L/S
[Symbol]	STARTER 1/3 PHASE 1 PHASE
[Symbol]	FAN SWITCH / IN-SUITE ERV OVERRIDE BUTTON
[Symbol]	CO SENSOR
[Symbol]	GAS LINE
[Symbol]	GAS METER
[Symbol]	GAS SOON
[Symbol]	PRESSURE REDUCING VALVE
[Symbol]	SANITARY ABOVE GRADE
[Symbol]	SANITARY BELOW GRADE
[Symbol]	STORM ABOVE GRADE
[Symbol]	STORM BELOW GRADE
[Symbol]	DOPPELSTIC COLD WATER
[Symbol]	DOPPELSTIC HOT WATER
[Symbol]	SANITARY VENT
[Symbol]	WATER METER
[Symbol]	FLOOR DRAIN
[Symbol]	RUNNEL FLOOR DRAIN
[Symbol]	ROOF DRAIN
[Symbol]	AREA DRAIN
[Symbol]	BL-LEVEL AREA DRAIN
[Symbol]	CATCH BASIN
[Symbol]	SANITARY TRAP
[Symbol]	ELBOW UP
[Symbol]	ELBOW DOWN
[Symbol]	WALL CLEANOUT
[Symbol]	FLOOR CLEANOUT
[Symbol]	HOSE BIBB
[Symbol]	NON-FREEZE HOSE BIBB
[Symbol]	GATE VALVE
[Symbol]	BALL VALVE
[Symbol]	BUTTERFLY VALVE
[Symbol]	PRESSURE REDUCING VALVE
[Symbol]	CHUCK VALVE
[Symbol]	CAP
[Symbol]	COMPRESSED AIR OUTLET
[Symbol]	BACKFLOW PREVENTER
[Symbol]	CIRCUIT BALANCING VALVE
[Symbol]	TEMPERATURE SENSOR
[Symbol]	TEMPERATURE SENSOR
[Symbol]	1-WAY MODULATING VALVE
[Symbol]	17-410T THERMOCOUPL
[Symbol]	C/U 1/2" BUSHING 4 1/2" PLUG
[Symbol]	FLOOR ELEVATION ABOVE LEVEL
[Symbol]	HEADROOM FLOOR TO CEILING

- ACOUSTIC NOTES:**
- ALL SYSTEM/DOMESTIC PIPE LOOPS OR OFFSETS WHICH ARE 50MM DIA. AND LARGER SHALL BE ISOLATED USING NEOPRENE-IN-SHEAR HANGERS, AND ADDITIONAL 25 MM THICK RIBBED OR WAFFLED NEOPRENE PADS IN THE SADDLES OF CLEVIS HANGERS.
  - ALL PIPES SMALLER THAN 50MM DIA. SHALL BE ISOLATED WITH 5MM THICK RIBBED OR WAFFLED RUBBER PADS IN HANGER SADDLES.
- CLEAR FLOOR TO UNDERLAB = 2750mm  
 CLEAR PRODUCT = 2700mm  
 UNITS 12/9/12/20: DRAIN FROM TERRACE ON 13/F

- NOTES:**
- NORTH F/A SHAFT B SERVING FROM G/F TO 14/F DUCT SERVING CORRIDOR FROM 9/F TO 14/F. SEE PRESSURIZATION / VENTILATION RISER DIAGRAM FOR DETAILS.
  - NORTH F/A SHAFT A SERVING FROM G/F TO 14/F. DUCT SERVING CORRIDOR FROM 9/F TO 14/F. SEE PRESSURIZATION / VENTILATION RISER DIAGRAM FOR DETAILS.
  - PIPE SHAFT - REFER TO PIPE DIAGRAM FOR DETAILS.
  - 150mm KITCHEN / DRYER / W/R / FCU INTAKE / FCU EXHAUST DUCT. (TYPICAL UNLESS OTHERWISE NOTED)
  - 100mm RUL DOWN.
  - 100mm ST1 01%.
  - 100mm RUL FROM ABOVE.
  - 100mm RUL FROM ABOVE AND DOWN.
  - 600mm GARBAGE CHUTE.
  - 19mm GAS PIPE c/u VALVE AND CAP FOR BBQ.
  - 19mm DCW FOR NFHB TO BE CONNECTED TO SUITE'S MAIN DCW LINE.

**DUCT SIZING TABLE (426 m/s, 800 FPM)**

DESIGNATION	L/s	DUCT SIZE	DESIGNATION	L/s	DUCT SIZE
(A)	47	100x150	(G)	189	350x150
(B)	71	150x150	(H)	236	450x150
(C)	94	200x150	(J)	283	500x150
(D)	118	250x150	(K)	330	600x150
(E)	141	300x150	(L)	377	500x200
(F)	165	300x150			

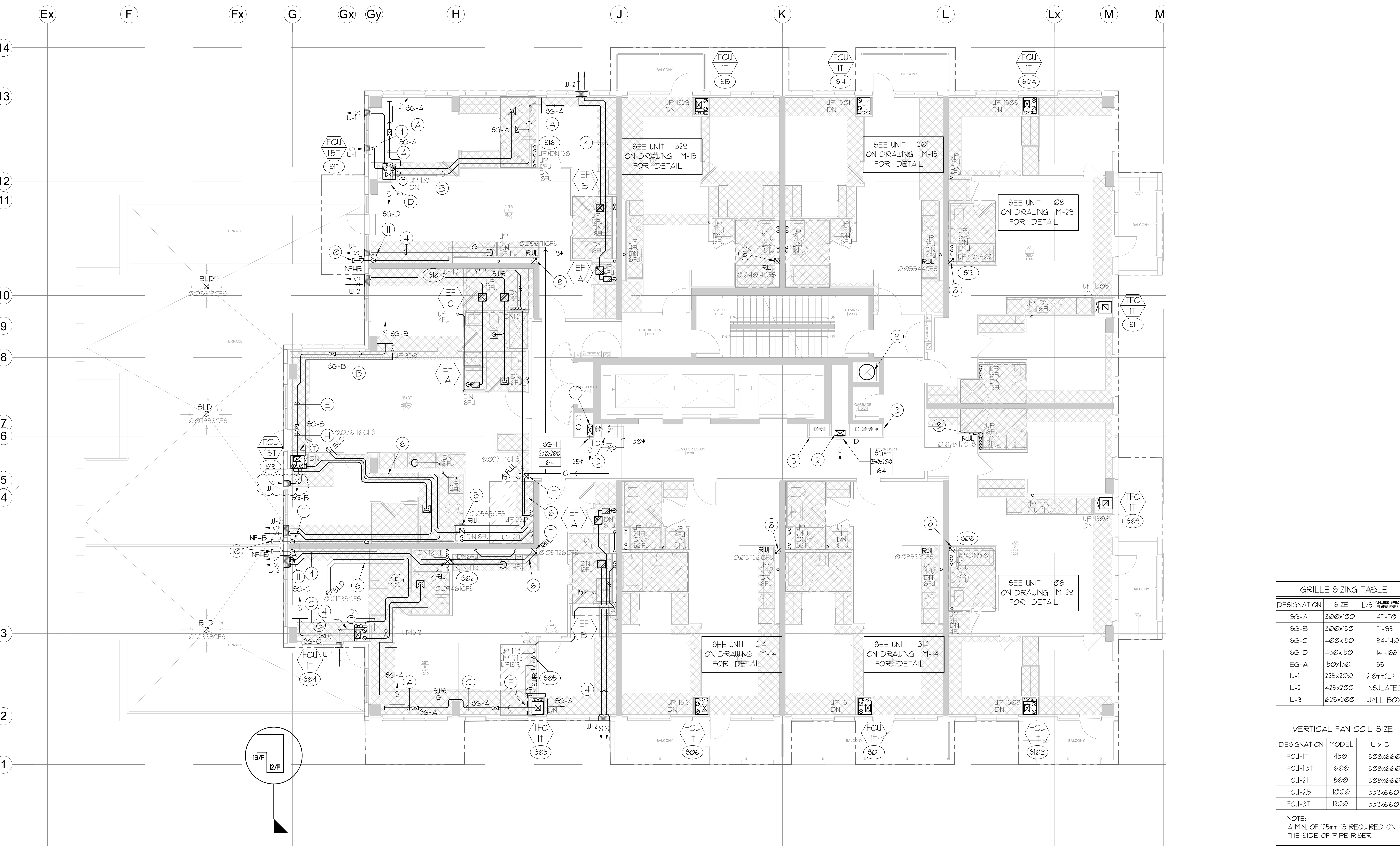
**GRILLE SIZING TABLE**

DESIGNATION	SIZE	L/S (UNLESS SPECIFIED OTHERWISE)
SG-A	300x100	47-10
SG-B	300x150	71-93
SG-C	400x150	94-140
SG-D	450x150	141-189
EG-A	150x150	35
W-1	225x200	210mm(L)
W-2	425x200	INSULATED
W-3	625x200	WALL BOX

**VERTICAL FAN COIL SIZE**

DESIGNATION	MODEL	W x D
FCU-IT	450	508x660
FCU-15T	600	508x660
FCU-2T	800	508x660
FCU-25T	1000	559x660
FCU-3T	1200	559x660

NOTE: A MIN OF 125mm IS REQUIRED ON THE SIDE OF PIPE RISER.



**KEY PLAN**

**REVISIONS**

NO.	DESCRIPTION	DATE
1	ISSUED FOR PERMIT	EP
2	ISSUED FOR PERMIT	EP
3	ISSUED FOR PERMIT	EP
4	ISSUED FOR PERMIT	EP

CONTRACTOR MUST CHECK AND VERIFY ALL DIMENSIONS AND CONDITIONS ON THE JOB AND REPORT DISCREPANCIES TO THE ENGINEER BEFORE PROCEEDING WITH THE WORK. THIS DRAWING IS THE PROPERTY OF THE ENGINEER AND NOT TO BE REPRODUCED FROM COMPLETION OF THE WORK. DRAWINGS ARE NOT TO BE SCALED.

**NOVA**  
 175 West Beaver Creek Road, Unit 31  
 Richmond Hill, Ontario L4B 3M1  
 Tel: 905-882-5445  
 Fax: 905-882-5441

PROJECT TITLE: **SG ALEXANDRA PARK BLOCK II**  
 38 CAMERON STREET TORONTO ONTARIO

DATE: FEB 13 2013  
 DRAWING NUMBER: M-30 OF 43

Drawing name: \\G:\2013\Projects\131313 - Alexandra Park\131313 - Mechanical Layout.dwg  
 Plot Date: Sep 26, 2014 - 9:10am  
 Plot Path: \\G:\2013\Projects\131313 - Alexandra Park\131313 - Mechanical Layout.dwg