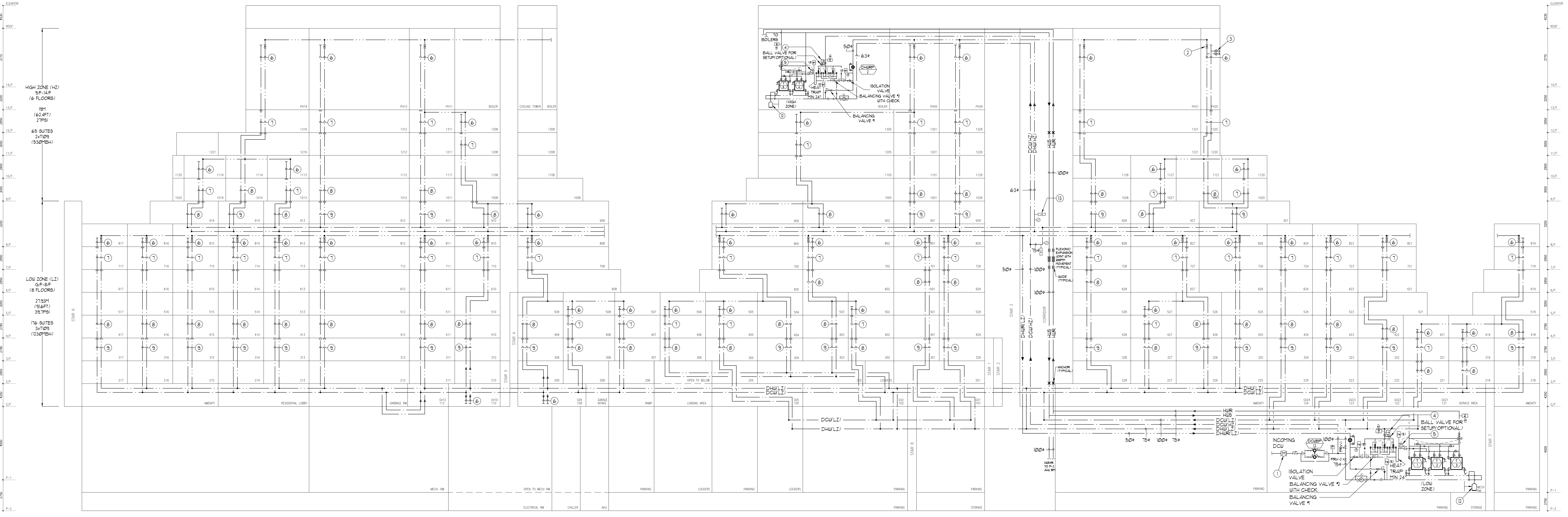


PRV #	DUTY	FLOW RATE (GPM)	INLET PRESSURE (PSI)	OUTLET PRESSURE (PSI)	REMARKS
1	LOW ZONE DCU	235	120	86	CLA-VAL MODEL 90G-01ASKC 15" OR EQUAL
2	LOW ZONE DHU	70	120	102	CLA-VAL MODEL 90G-01ASKC 50" OR EQUAL

- GENERAL NOTES:**
- SIZES SHOWN INDICATE REDUCTIONS AFTER DN40W HEADERS ON STOREY INDICATED.
 - REFER TO FLOOR PLANS FOR SIZING OF HORIZONTAL PIPE.
 - PROVIDE 1/2" SHUT OFF VALVES FOR EACH SUITE.
 - PROVIDE DRAIN VALVE AT BOTTOM OF EACH RISER.
 - PROVIDE AIR VENT AT TOP OF EACH RISER.
 - PROVIDE 1/2" CIRCUIT BALANCING VALVE ON TOP OF EACH DOMESTIC HOT WATER RISER EACH CIRCUIT VALVE TO BE BALANCED TO EQUAL FLOW.
 - ALL RISER ANCHORS MUST INCLUDE 25MM THICK NSN ISOLATION PADS. THE PADS ARE TO BE HELD IN PLACE WITH HORIZONTAL STEEL PLATES WELDED TO BRACKETS THAT ARE IN TURN WELDED TO THE RISER.
 - WHERE RISERS ARE SUPPORTED BY T-CLAMPS RATHER THAN ANCHORS, NSN PADS ARE TO BE INCLUDED BELOW THE T-CLAMP.
 - ANY PIPE GUIDES USED IN CONNECTION WITH EXPANSION JOINTS OR LOOPS ARE TO BE THE PRE-FABRICATED TYPE WITH INTEGRAL RUBBER ISOLATION.

- NOTES:**
- WATER METER ASSEMBLY c/w BACK WATER VALVE AND EXPANSION TANK PER CITY'S STANDARDS. SEE DETAILS ON DUGH-21.
 - 1/2" CIRCUIT BALANCING VALVE AT TOP OF EACH DHU RISER UNLESS OTHERWISE SPECIFIED (TYPICAL)
 - 1/2" SHUT-OFF VALVE FOR EACH SUITE. (TYPICAL)
 - SET AT 120°F DHU & COMBINED DCU & DHUR TO MAINTAIN MAXIMUM SUPPLY TEMPERATURE AT 120°F.
 - BYPASS HUBS ONCE DHU SUPPLY TEMPERATURE REACHES 140°F.
 - 1/2" DCU & 1/2" DHU.
 - 25" DCU & 1/2" DHU.
 - 32" DCU & 25" DHU.
 - 38" DCU & 32" DHU.
 - THERMOMETER AND PRESSURE GAUGE.
 - BAS TO ADJUST PRIMARY HEATING WATER TEMPERATURE AND/OR RAMP UP BOILER TEMPERATURE IF REQUIRED WHEN DOMESTIC HOT WATER SUPPLY TEMPERATURE DROPS BELOW 120°F. (TYPICAL TO ALL ZONES).
 - ARMSTRONG PRECHARGED DIAPHRAGM EXP. TANK MODEL AST-42.
 - THERMOMETER AND PRESSURE GAUGE.



NO.	DATE	DESCRIPTION	BY

REVISIONS

CONTRACTOR MUST CHECK AND VERIFY ALL DIMENSIONS AND CONDITIONS ON THE JOB AND REPORT DISCREPANCIES TO THE ENGINEER BEFORE PROCEEDING WITH THE WORK. THIS DRAWING IS THE PROPERTY OF THE ENGINEER AND NOT TO BE REPRODUCED FROM COMPLETION OF THE WORK. DRAWINGS ARE NOT TO BE SCALED.

NOVA
ENGINEERING
15 West Beaver Creek Road Unit 31
Richmond Hill, Ontario L4B 3M1
Tel: 905.882-5445
Fax: 905.882-5447

PROJECT TITLE:
**60 ALEXANDRA PARK
BLOCK II
38 CAMERON STREET
TORONTO**

DATE: FEB, 13 2013

DESIGNED BY: G.S. CHECKED BY: E.P. SCALE: N.T.S.

DRAWING NUMBER: M-36 OF 43