

UNIT	NAME	AREA (SQ. FT.)	# OF UR	# OF POWDER	SIZE (T)	FIXTURE UNITS	BR	SQ. FT/T
1001	1A-MR1	525	1	0	1	10	1	525
1005	2TR	1150	2	1	2	22	2	575
1008	2TR	1150	2	1	2	22	2	575
1011	1C-D1	590	2	0	1	16	1	590
1012	1C-D3	590	2	0	1	16	1	590
1013	1C	500	1	0	1	10	1	500
1014	SI	440	1	0	15	10	STUDIO	293
1019	2JT	140	2	0	15	16	2	493
1020	1HT	530	1	0	1	10	1	530
1021	2JTR	140	2	0	15	16	2	493
1021	1K2	545	1	0	1	10	1	545
1028	2B	605	1	1	1	16	2	605
1029	1A-M3	580	1	0	1	10	1	580

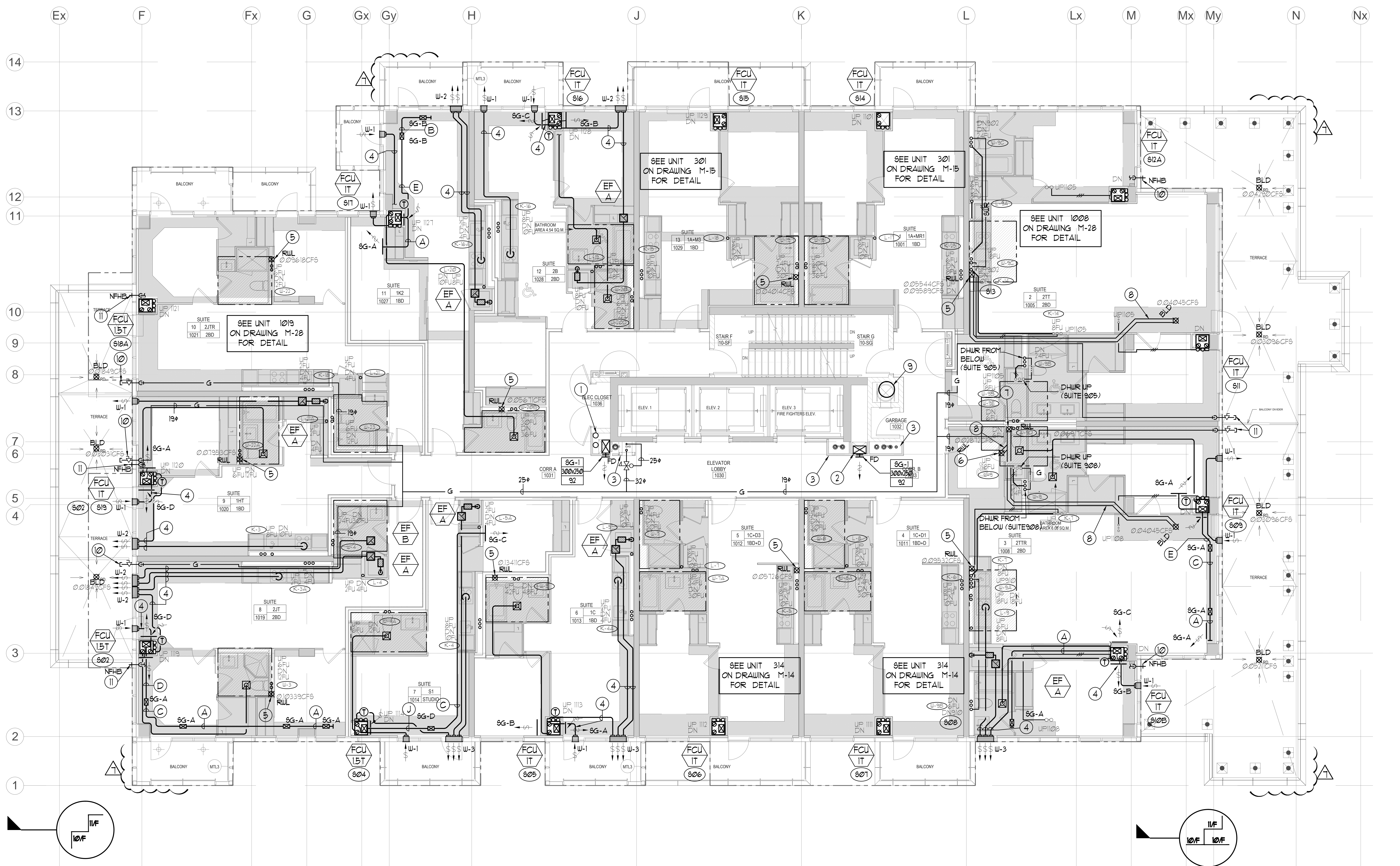
- GENERAL NOTES:**
- CONTRACTOR SHALL CO-ORDINATE ARCHITECTURAL, STRUCTURAL, LIGHTING, HVAC, SPRINKLER DRAWINGS TO AVOID AREAS OF CONFLICT AND TO MAINTAIN CEILING HEIGHTS.
 - CONTRACTOR SHALL REPORT ALL DISCREPANCIES AND AREA OF CONFLICTS TO THE ENGINEER PRIOR TO WORK BEGINS.
 - PROVIDE EXPANSION CHAMBERS FOR ALL KITCHEN SINKS.
 - SEE INSTALLATION DETAILS DRAWING FOR WASHER, D.O.M, H.C WATER, SANITARY CONNECTION DETAILS.
 - SUPPLY AND INSTALL COMPLETE DOMESTIC HOT AND COLD WATER LINES, SANITARY AND VENT LINES TO EACH FIXTURE EQUIPMENT INCLUDING WATER CLOSETS, LAVATORIES, BATHS, SHOWERS, KITCHEN SINK, WASHING MACHINES, DISHWASHERS, AND FLOOR DRAINS, KITCHEN SINK, LAVATORIES, WATER CLOSETS AND WASHING MACHINE TO BE CAU LOCALIZED SHUT-OFF VALVES.
 - ALL VENT PIPE INSTALLATION TO COMPLY WITH PLUMBING CODES.
 - FOR D.H.C. W. RISER SIZES, REFER TO RISER DIAGRAM
 - FIRE DAMPERS ARE REQUIRED TO BE LISTED AND ARE TO HAVE FIRE PROTECTION RATING OF THE PENETRATED FIRE SEPARATION.
 - THE PIPING PENETRATING THE VARIOUS FIRE SEPARATION IS REQUIRED TO BE FIRESTOPPED WITH A LISTED FIRESTOPPING MATERIAL IN ACCORDANCE WITH OBC ARTICLE 3.13.1
 - THE FIRE HOSE CABINET THAT ARE RECESSED INTO THE EXIT STAIR SHAFTS ARE REQUIRED TO BE SEPARATED FROM THE EXIT STAIR BY A 2 HR FIRE SEPARATION.
 - NO FLEXIBLE DUCT SHALL BE USED FOR ANY IN-SUITE DUCTWORK.
 - PROVIDE 25MM EXTERNAL INSULATION TO ENTIRE FRESH AIR DUCT FROM EXTERIOR WALL TO EXH FAN COIL UNIT.
 - DRYER EXHAUST DUCT SHALL BE SMOOTH AND CORROSION-RESISTANT MATERIAL (FLEXIBLE CONNECTION IS NOT ACCEPTABLE).

LEGEND MECHANICAL

SYMBOL	DESCRIPTION
[Symbol]	SUPPLY AIR DRYER
[Symbol]	SUPPLY AIR TRAP
[Symbol]	LINEAR SUPPLY DIFFUSER
[Symbol]	TEMPERAT
[Symbol]	FAN MOTOR
[Symbol]	RETURN AIR GRILLE
[Symbol]	EXHAUST AIR GRILLE
[Symbol]	SUPPLY DUCT UP
[Symbol]	SUPPLY DUCT DOWN
[Symbol]	RETURN DUCT UP
[Symbol]	RETURN DUCT DOWN
[Symbol]	EXHAUST DUCT UP
[Symbol]	EXHAUST DUCT DOWN
[Symbol]	FIRE DAMPER
[Symbol]	BALANCING DAMPER
[Symbol]	MOTORIZED DAMPER
[Symbol]	MOTORIZED FIRE DAMPER
[Symbol]	BACKDRIFT DAMPER
[Symbol]	OPPOSED BLADE VOLUME CONTROL DAMPER
[Symbol]	CO2 SENSING DAMPER
[Symbol]	TURNING VANES
[Symbol]	FLEXIBLE CONNECTION
[Symbol]	ACOUSTIC INSULATION
[Symbol]	TYPE OF EQUIPMENT
[Symbol]	BASEMENT CONNECTION
[Symbol]	TYPE OF DAMPER OR GRILLE
[Symbol]	SMALL SIZE OR OFFSHORE WOOD KICK
[Symbol]	ANGLE (CM OR L)
[Symbol]	ANGLE (CM OR L)
[Symbol]	SEWER / 3 PHASE / PHASE /
[Symbol]	FAN SWITCH / FAN/SHUTE ERY OVERRIDE BUTTON
[Symbol]	CO SENSOR
[Symbol]	GAS LINE
[Symbol]	GAS METER
[Symbol]	GAS SOCK
[Symbol]	PRESSURE REDUCING VALVE
[Symbol]	SANITARY ABOVE GRADE
[Symbol]	SANITARY BELOW GRADE
[Symbol]	OTHER ABOVE GRADE
[Symbol]	OTHER BELOW GRADE
[Symbol]	DOMESTIC COLD WATER
[Symbol]	DOMESTIC HOT WATER
[Symbol]	SANITARY VENT
[Symbol]	WATER PETER
[Symbol]	FLOOR DRAIN
[Symbol]	RUNNEL FLOOR DRAIN
[Symbol]	ROOF DRAIN
[Symbol]	AREA DRAIN
[Symbol]	AREA DRAIN
[Symbol]	AREA DRAIN
[Symbol]	CATCH BASIN
[Symbol]	SANITARY TRAP
[Symbol]	ELBOW UP
[Symbol]	ELBOW DOWN
[Symbol]	WALL CLEANOUT
[Symbol]	FLOOR CLEANOUT
[Symbol]	HOSE VALVE
[Symbol]	NON-PRESSURE HOSE ENDS
[Symbol]	GATE VALVE
[Symbol]	BALL VALVE
[Symbol]	BUTTERFLY VALVE
[Symbol]	PRESSURE REDUCING VALVE
[Symbol]	CHECK VALVE
[Symbol]	CAP
[Symbol]	COMPRESSED AIR OUTLET
[Symbol]	BACKFLOW PREVENTER
[Symbol]	CIRCUIT BALANCING VALVE
[Symbol]	MULTIPLE PIPES
[Symbol]	DENOTES NO. OF PIPES
[Symbol]	TEMPERATURE SENSOR
[Symbol]	TEMPERATURE SENSITIVE
[Symbol]	3-WAY MODULATING VALVE
[Symbol]	3-WAY MODULATING VALVE
[Symbol]	COU 1/2" BURNING 4 1/2" PLUGS
[Symbol]	FLOOR ELEVATION ABOVE LEVEL
[Symbol]	HEADROOM FLOOR TO CEILING

- ACOUSTIC NOTES:**
- ALL SYSTEM/DOMESTIC PIPE LOOPS OR OFFSETS WHICH ARE 50MM DIA. AND LARGER SHALL BE ISOLATED USING NEOPRENE-IN-SHEAR HANGERS, AND ADDITIONAL 25 MM THICK RIBBED OR WAFFLED NEOPRENE PADS IN THE SADDLES OF CLEVIS HANGERS.
 - ALL PIPES SMALLER THAN 50MM DIA. SHALL BE ISOLATED WITH 5MM THICK RIBBED OR WAFFLED RUBBER PADS IN HANGER SADDLES.
- CLEAR FLOOR TO UNDERSLAB = 2150mm
CLEAR PRODUCT = 2100mm
UNITS 1005/1008: DRAINS FROM TERRACE ON I/F

- NOTES:**
- NORTH F/A SHAFT A FROM G/F TO 14/F DUCT SERVING CORRIDOR FROM 3/F TO 14/F. SEE PRESSURIZATION / VENTILATION RISER DIAGRAM FOR DETAILS.
 - NORTH F/A SHAFT SERVING FROM G/F TO 14/F DUCT SERVING CORRIDOR FROM G/F TO 14/F. SEE PRESSURIZATION / VENTILATION RISER DIAGRAM FOR DETAILS.
 - PIPE SHAFT - REFER TO PIPE DIAGRAM FOR DETAILS.
 - 150+ KITCHEN / DRYER / W/R / FCU INTAKE / FCU EXHAUST DUCT. (TYPICAL UNLESS OTHERWISE NOTED)
 - 100+ RUL FROM ABOVE AND DOWN.
 - 100+ RUL FROM ABOVE.
 - 100+ RUL DOWN.
 - 100+ STM #18.
 - 600+ GARBAGE CHUTE.
 - 15+ GAS PIPE c/w VALVE AND CAP FOR BBQ.
 - 15+ DCU FOR NFHB TO BE CONNECTED TO SUITE'S MAIN DCU LINE.



REVISIONS

NO.	DESCRIPTION	DATE
1	ISSUED FOR SITE INSPECTION #14	EP
2	ISSUED FOR SITE COMMENTS	EP
3	ISSUED FOR SITE INSPECTION #12	EP
4	ISSUED FOR SITE INSPECTION #11	EP
5	ISSUED FOR REVIEW	EP
6	ISSUED FOR PERMIT	EP
7	ISSUED FOR PERMIT	EP
8	ISSUED FOR PERMIT	EP

MARK VOID ALL PRINTS DATED PREVIOUS TO FINAL DATE ABOVE

NOVA ENGINEERING

175 West Beaver Creek Road Unit 31
Richmond Hill, Ontario L4B 3M1
Tel: 905-882-5445
Fax: 905-882-5441

DRAWING TITLE: 10/F MECHANICAL LAYOUT

PROJECT TITLE: SG ALEXANDRA PARK BLOCK II
38 CAMERON STREET TORONTO ONTARIO

DATE: FEB 13 2013

DESIGNED BY: G.S. SCALE: 1:50
CHECKED BY: E.P. DRAWING NUMBER: M-28 OF 43

Drawing name: \\202502020\Projects\131313 - Alexandra Park\131313 - Mechanical Layout\10/F
 Project: 131313 - Alexandra Park
 Date: 2013-02-13 10:00:00 AM