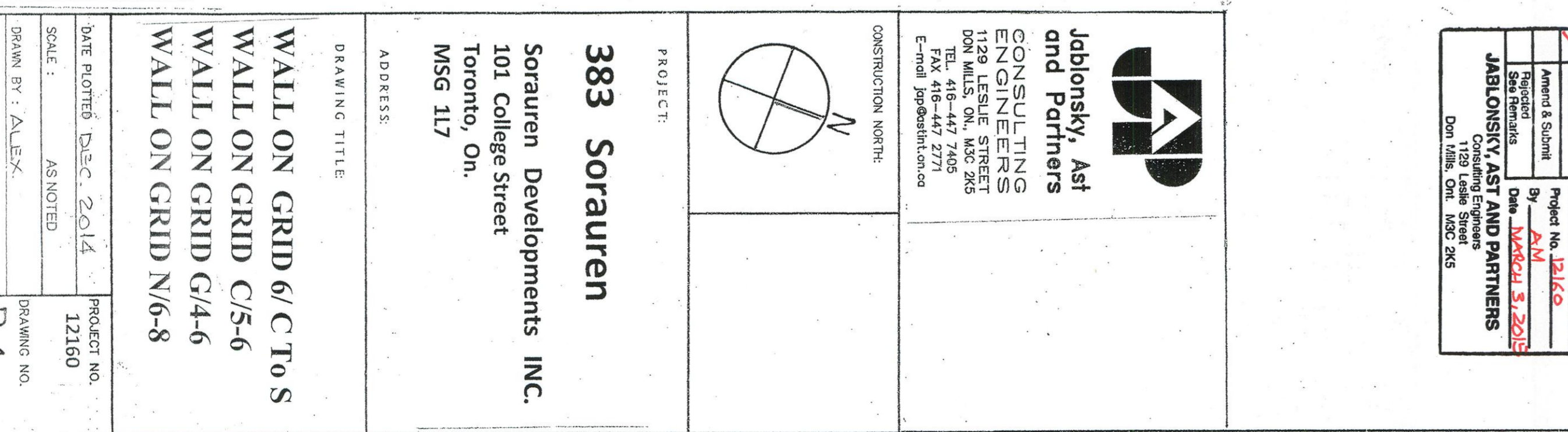
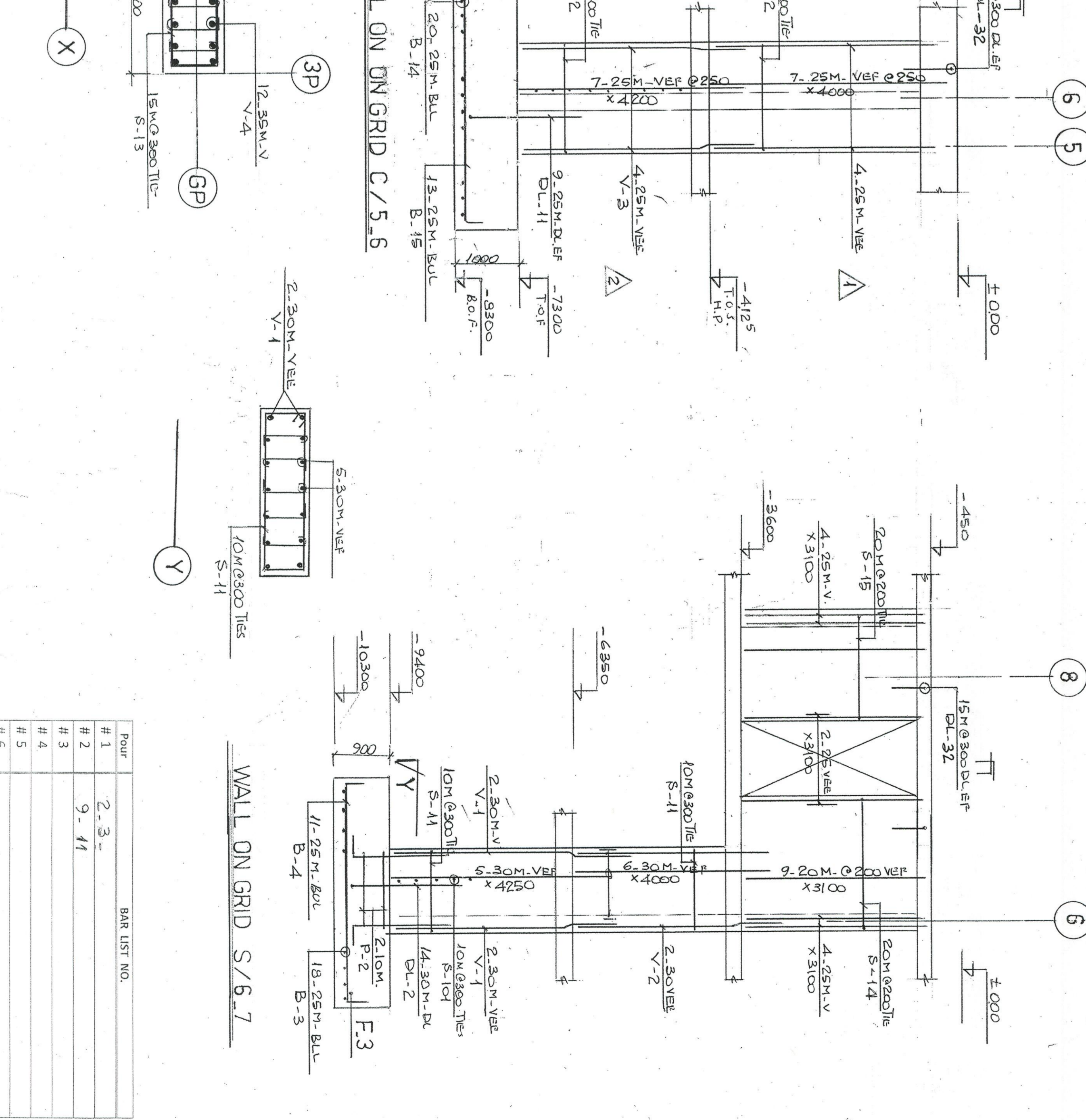
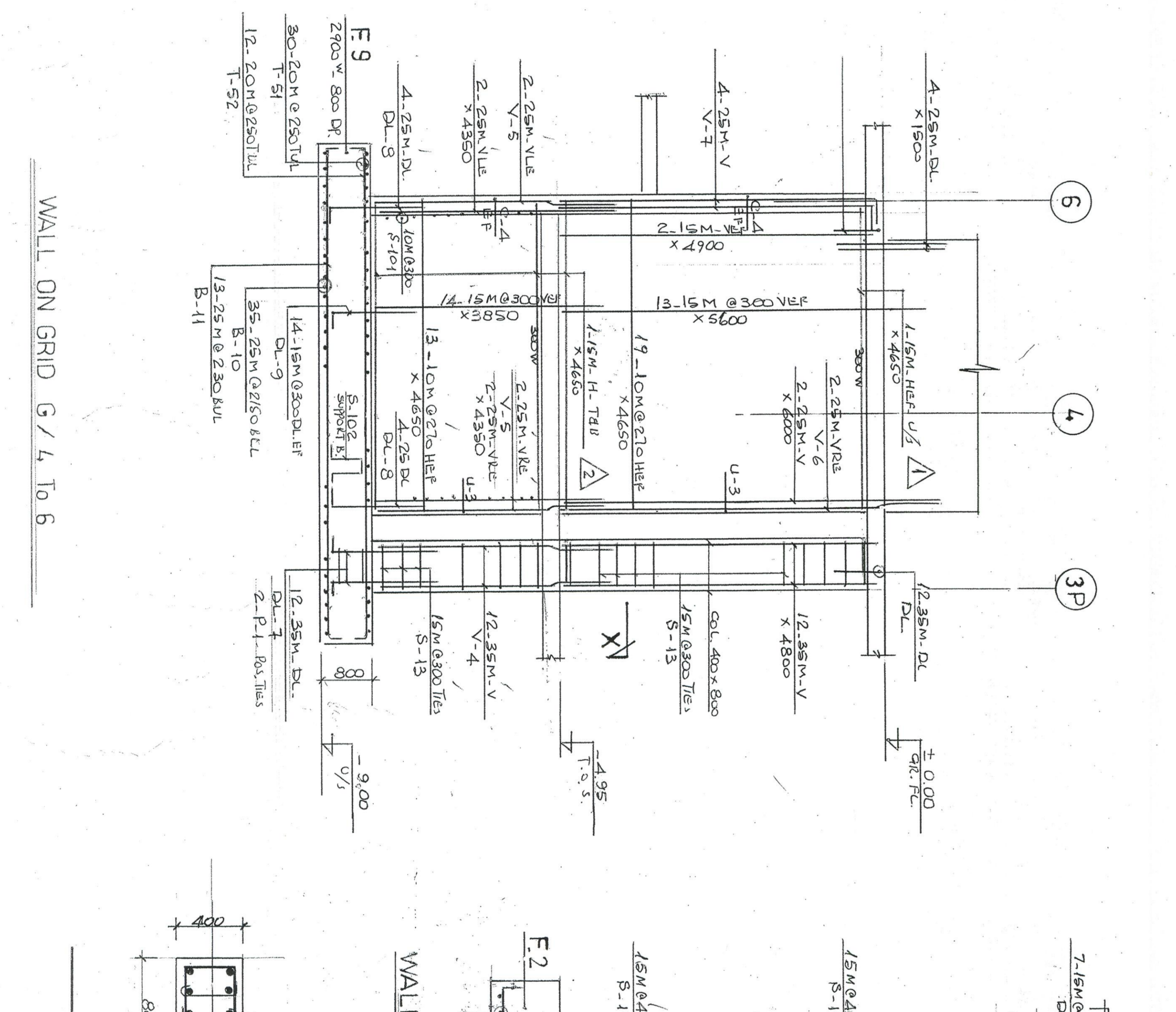
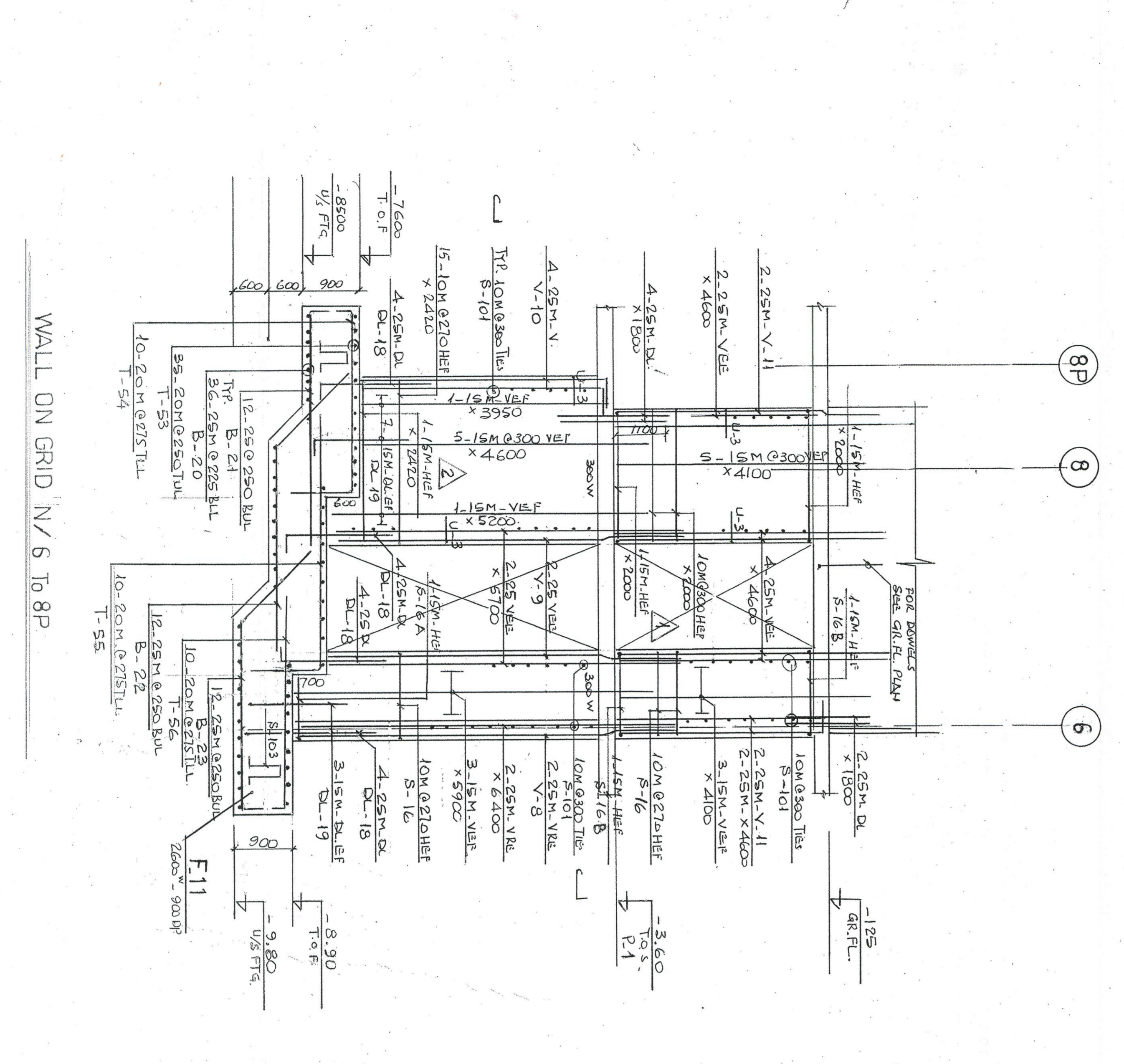


WALL ELEVATION ALONG GRID 6/C TO S



Row	Bar List No.
#1	2-3"
#2	9-#1
#3	
#4	
#5	
#6	

PROJECT NO.	PROJECT TITLE
383 Soraren	WALL ON GRID 6/C TO S
	WALL ON GRID C/5-6
	WALL ON GRID G/4-6
	WALL ON GRID N/6-8
	WALL ON GRID S/6-7

DATE: 10/14/2014
 SCALE: AS SHOWN
 DRAWN BY: T. ALEX
 CHECKED BY: R-1

383 Soraren
 Soraren Developments Inc.
 101 College Street
 Toronto, On.
 M5G 1J7

Joblonsky, Art and Partners
 CONSULTING ENGINEERS
 1124 LESLIE STREET
 TORONTO, ONTARIO
 M4M 1A4
 TEL: 416-467-7900
 FAX: 416-467-7901
 E-MAIL: INFO@JOBLONSKY.COM

CONSTRUCTION NOTES:
 1. SEE GENERAL NOTES AND SPECIFICATIONS.
 2. ALL REINFORCEMENT SHALL BE AS SHOWN.
 3. ALL REINFORCEMENT SHALL BE PROTECTED WITH A MINIMUM OF 25MM CLEARANCE.
 4. ALL REINFORCEMENT SHALL BE TIED TOGETHER.
 5. ALL REINFORCEMENT SHALL BE LAP SPICED AS SHOWN.
 6. ALL REINFORCEMENT SHALL BE DEVELOPED AS SHOWN.
 7. ALL REINFORCEMENT SHALL BE PROTECTED WITH A MINIMUM OF 25MM CLEARANCE.
 8. ALL REINFORCEMENT SHALL BE TIED TOGETHER.
 9. ALL REINFORCEMENT SHALL BE LAP SPICED AS SHOWN.
 10. ALL REINFORCEMENT SHALL BE DEVELOPED AS SHOWN.

DRAWING REVIEW
 The undersigned hereby certifies that the drawings were prepared by a qualified professional engineer or architect, or by a person under their direct supervision and control, and that the drawings were prepared in accordance with the provisions of the Professional Engineers Act, R.S.O. 1990, Chapter 1927, and the Professional Architects Act, R.S.O. 1990, Chapter 1928, and that the drawings were prepared in accordance with the provisions of the Professional Engineers Act, R.S.O. 1990, Chapter 1927, and the Professional Architects Act, R.S.O. 1990, Chapter 1928, and that the drawings were prepared in accordance with the provisions of the Professional Engineers Act, R.S.O. 1990, Chapter 1927, and the Professional Architects Act, R.S.O. 1990, Chapter 1928.

REVISIONS
 NO. REVISION DATE

DATE: 10/14/2014
 SCALE: AS SHOWN
 DRAWN BY: T. ALEX
 CHECKED BY: R-1