



Teepie Architects Inc.

REVIEWED ()
REVIEWED AS NOTED (X)
REVISE AND RESUBMIT ()
NOT REVIEWED ()
DATE: **2015-09-30**
REVIEWED BY: **TC**

This review by Teepie Architects Inc. is for the sole purpose of ascertaining conformance with the general design concept. This review shall not mean that Teepie Architects Inc. approves the detailed design inherent in the shop drawings, responsibility for which shall remain with the Contractor submitting same, and such review shall not relieve the Contractor of the responsibility for errors or omissions in the shop drawings or of the responsibility for meeting all requirements of the Contracts Documents. The Contractor is responsible for dimensions to be confirmed and correlated at the job site, for information that pertains solely to fabrication processes or to techniques of construction and installation, and for coordination of the work of all trades.

SQ ALEXANDRA PARK CONDOMINIUMS

38 CAMERON STREET
TORONTO, ONTARIO

SHOP DRAWINGS FOR ALUMINUM
BALCONY AND TERRACE RAILINGS
MAY 05, 2015

BUILDER: TRIDEL
ARCHITECT: TEEPLE ARCHITECTS



For a total of 25 pages

 **TORO ALUMINUM**
Railings Inc.

140 APPLEWOOD CRESENT
CONCORD, ONTARIO L4K 4E2
TELEPHONE: 905.761.1789
FAX: 905.761.1764

GENERAL NOTES

THESE DRAWINGS ARE COPYRIGHT AND THE PROPERTY OF TORO ALUMINUM RAILINGS INC. THE DRAWINGS MAY NOT BE USED FOR CONSTRUCTION WITHOUT THE PERMISSION OF TORO ALUMINUM RAILINGS INC. REPRODUCTION OF THESE DRAWINGS WITHOUT THE CONSENT OF TORO ALUMINUM RAILINGS INC. IS STRICTLY PROHIBITED. DO NOT SCALE THESE DRAWINGS. ANY ERRORS OR DISCREPANCY IS TO BE REPORTED IMMEDIATELY TO: TORO ALUMINUM RAILINGS INC.

ENGINEER STAMP:

THE DRAWING HAS BEEN REVIEWED FOR STRUCTURAL COMPLIANCE TO THE ONTARIO BUILDING CODE. DRAWINGS ARE NOT TO BE ALTERED IN ANY WAY WITHOUT THE WRITTEN CONSENT OF TORO ALUMINUM RAILINGS INC.

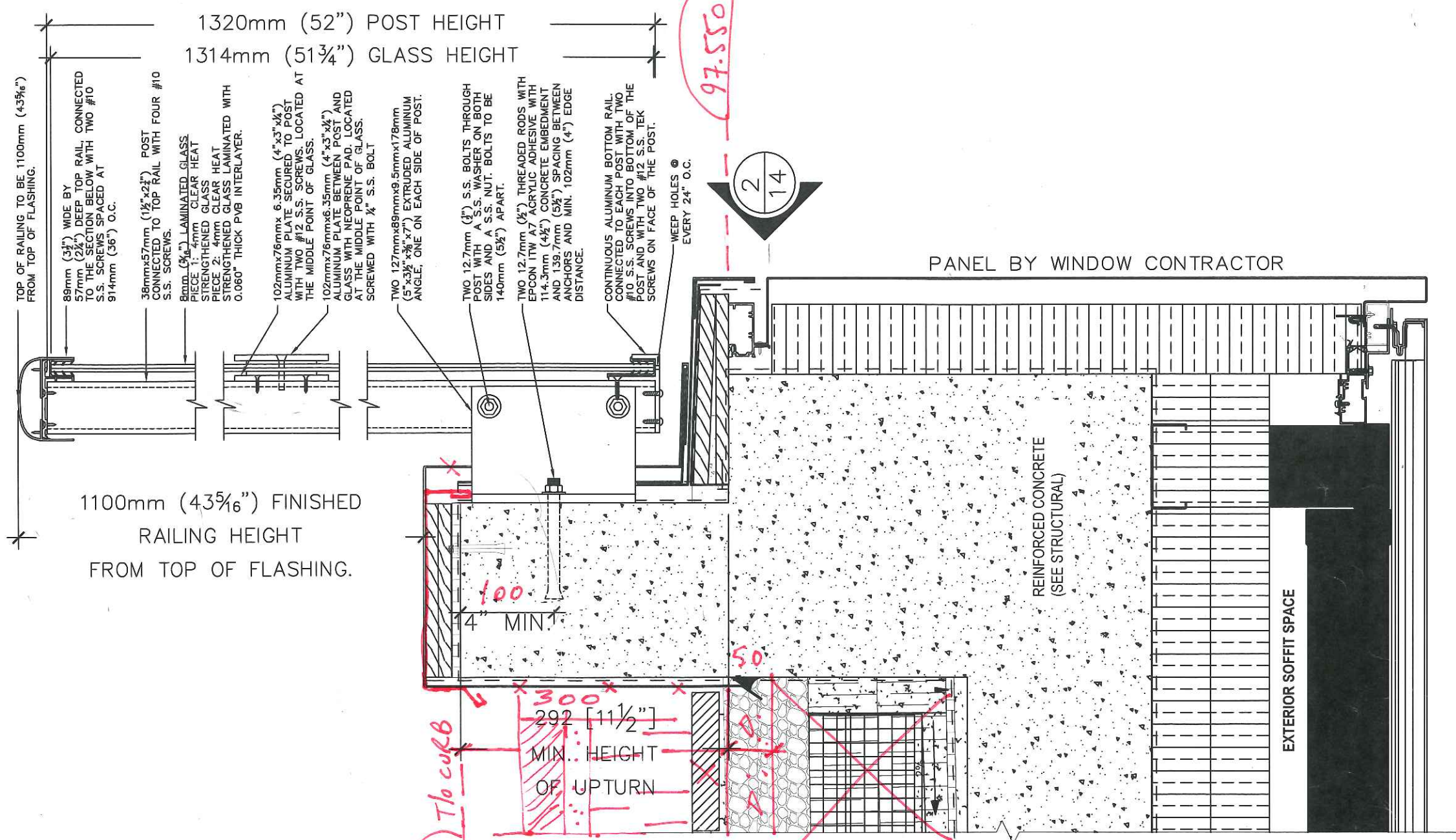


TORO ALUMINUM Railings Inc.

140 APPLEWOOD CRESENT
CONCORD, ONTARIO L4K 4E2
TELEPHONE: 905.761.1789
FAX: 905.761.1764

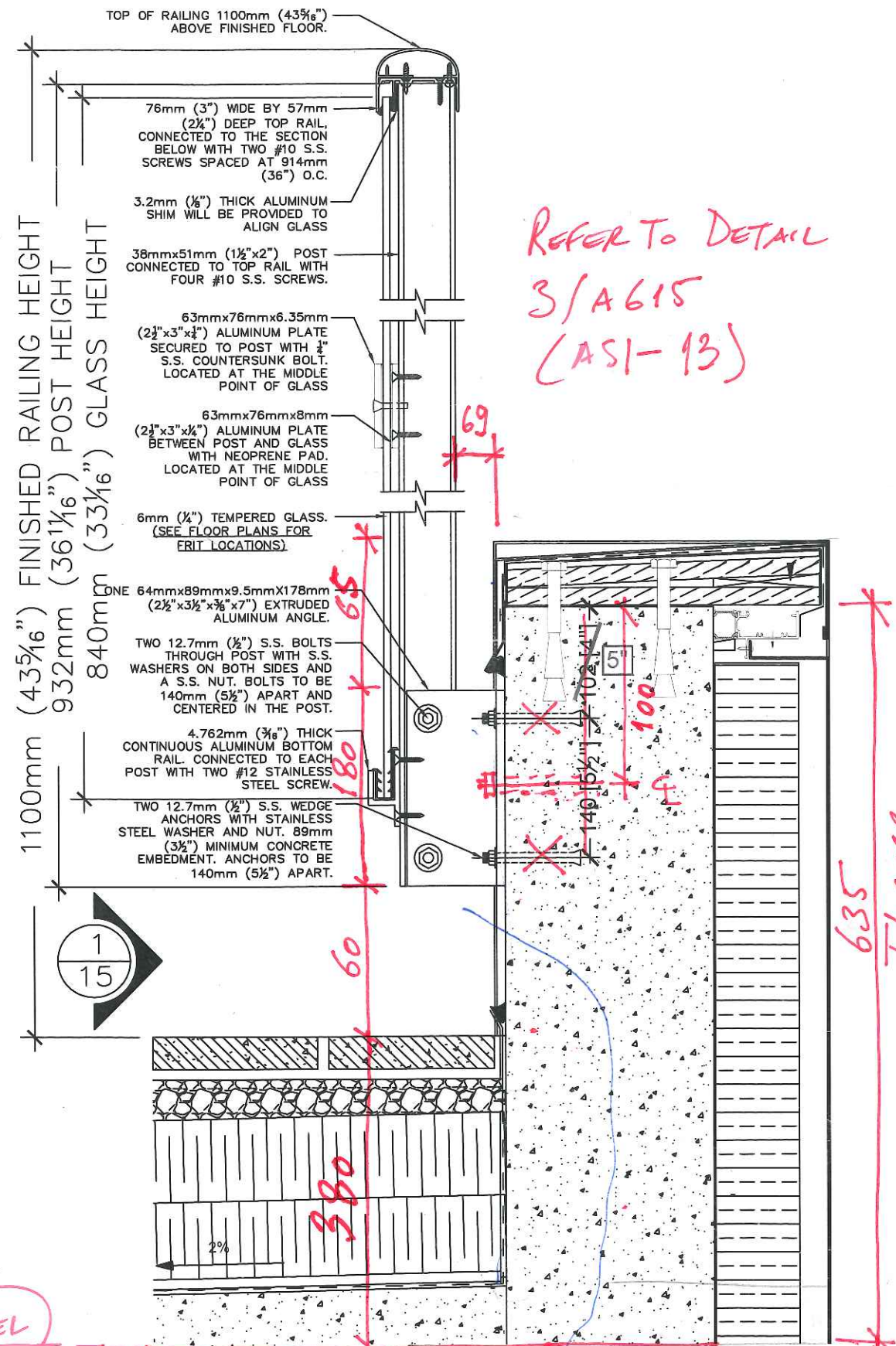
No.	DATE	REVISIONS	BY
1	05/05/15	DRAWING ESTABLISHED	GS

TITLE: TERRACE RAILING SECTION TYPE 2	
DESCRIPTION: SQ ALEXANDRA PARK	
AREA: 38 CAMERON STREET TORONTO, ON	
PLOT DATE: MAY 05, 2015	SCALE: 1:5
COMPANY PROJECT No: 12-115	DRAWING No: 17
TORO PROJECT No:	
DRAWN BY: G.S.	CHECKED BY: A.K.

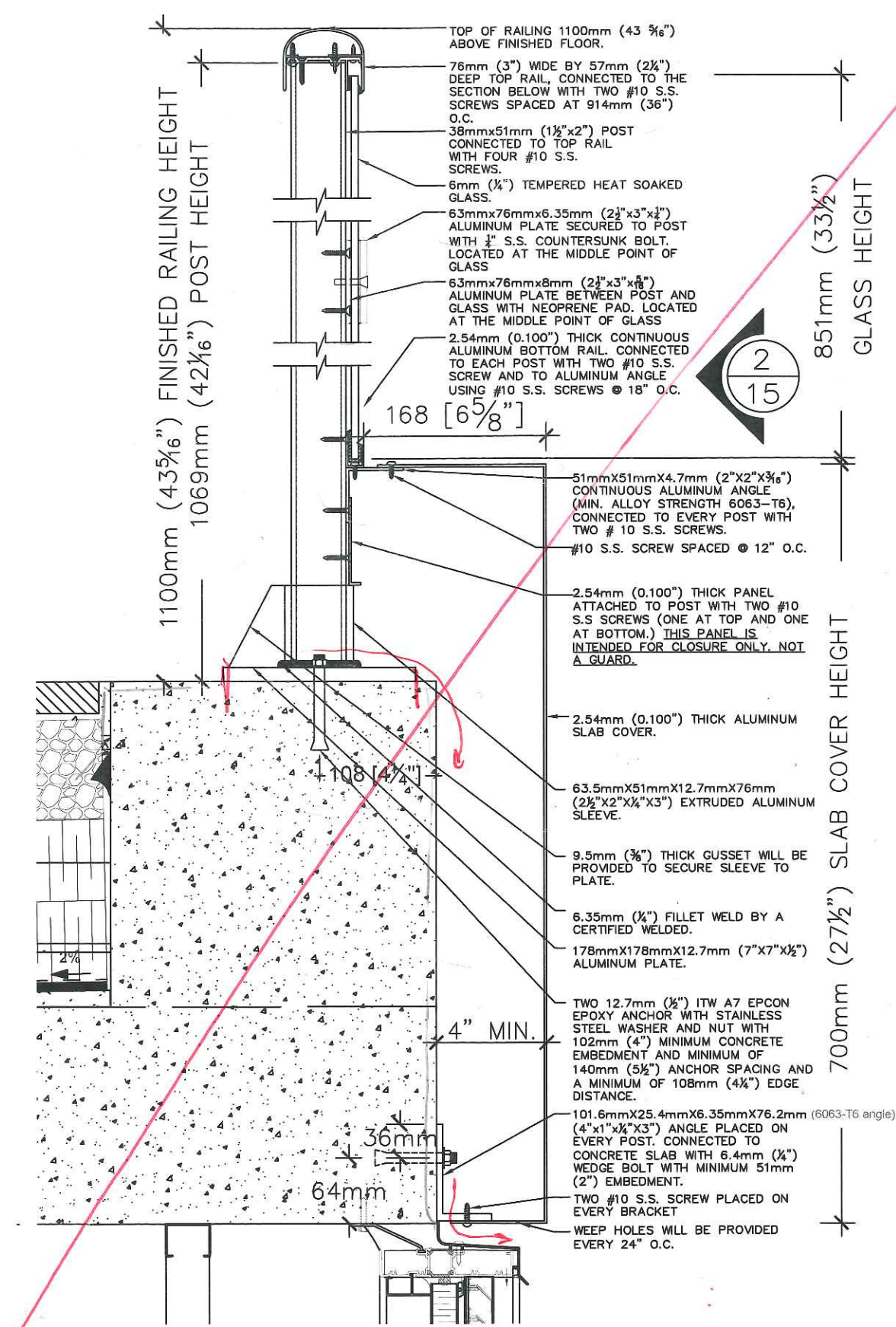


1 TERRACE RAILING SECTION TYPE 2
17 SCALE 1:5

REFER TO DETAIL 4/A615 (AS1-13)



1 TERRACE RAILING SECTION TYPE 3
SCALE 1:5



2 TERRACE RAILING SECTION TYPE 4
SCALE 1:5

GENERAL NOTES
 THESE DRAWINGS ARE COPYRIGHT AND THE PROPERTY OF TORO ALUMINUM RAILINGS INC. THE DRAWINGS MAY NOT BE USED FOR CONSTRUCTION WITHOUT THE PERMISSION OF TORO ALUMINUM RAILINGS INC. REPRODUCTION OF THESE DRAWINGS WITHOUT THE CONSENT OF TORO ALUMINUM RAILINGS INC. IS STRICTLY PROHIBITED. DO NOT SCALE THESE DRAWINGS. ANY ERRORS OR DISCREPANCY IS TO BE REPORTED IMMEDIATELY TO: TORO ALUMINUM RAILINGS INC.

ENGINEER STAMP:
 THE DRAWING HAS BEEN REVIEWED FOR STRUCTURAL COMPLIANCE TO THE ONTARIO BUILDING CODE. DRAWINGS ARE NOT TO BE ALTERED IN ANY WAY WITHOUT THE WRITTEN CONSENT OF TORO ALUMINUM RAILINGS INC.

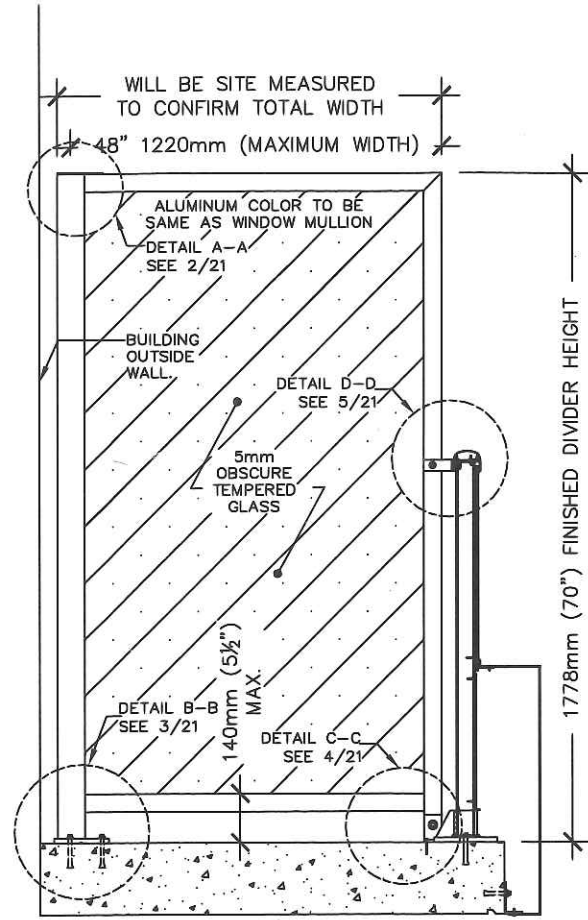


TORO ALUMINUM Railings Inc.
 140 APPLEWOOD CRESSENT
 CONCORD, ONTARIO L4K 4E2
 TELEPHONE: 905.761.1789
 FAX: 905.761.1764

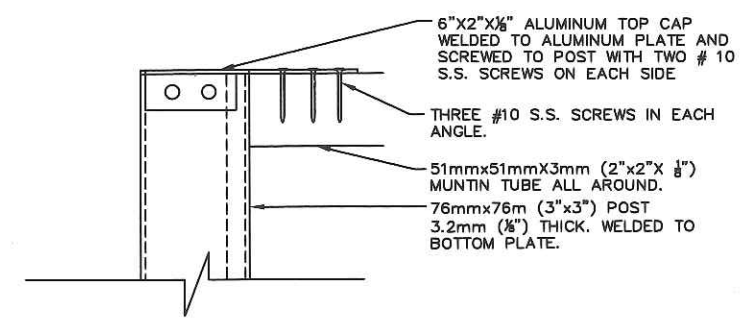
No.	DATE	REVISIONS	BY
1	05/05/15	DRAWING ESTABLISHED	CS

TITLE: TERRACE RAILING SECTIONS TYPE 3 & TYPE 4	
DESCRIPTION: SQ ALEXANDRA PARK	
AREA: 38 CAMERON STREET TORONTO, ON	
PLANT DATE: MAY 05, 2015	SCALE: 1:5
COMPANY PROJECT No: 12-115	DRAWING No: 18
TORO PROJECT No:	
DRAWN BY: G.S.	CHECKED BY: A.K.

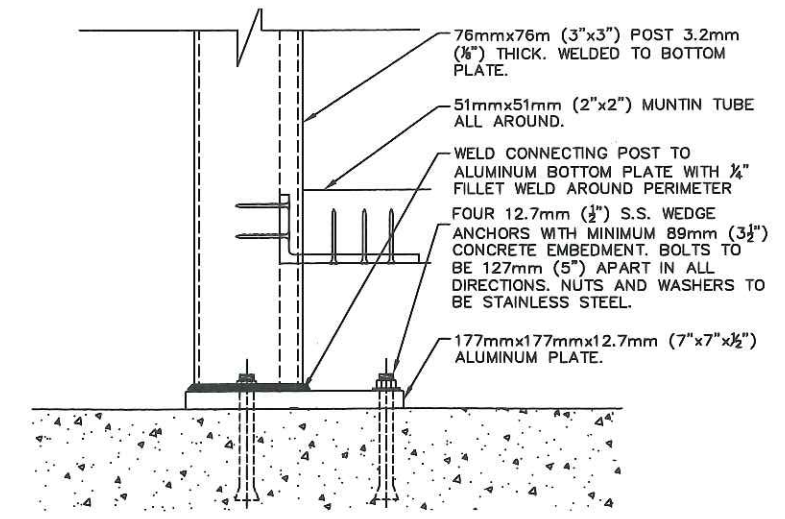
DELETED



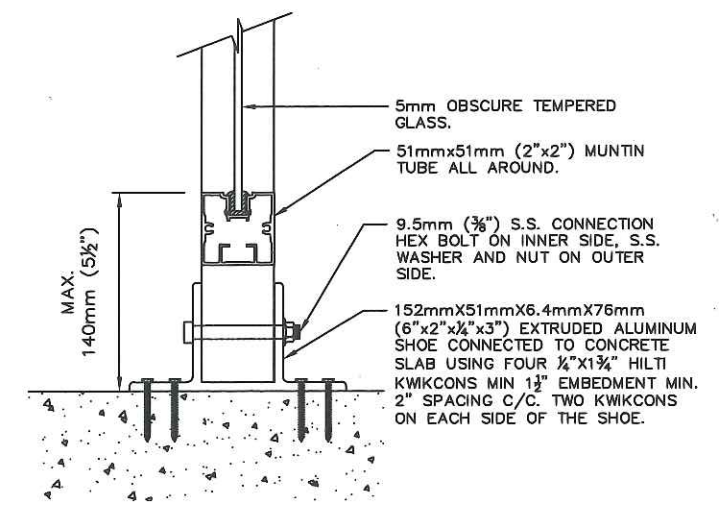
1
21 BALCONY DIVIDER ELEVATION TYPE 1
SCALE 1:20



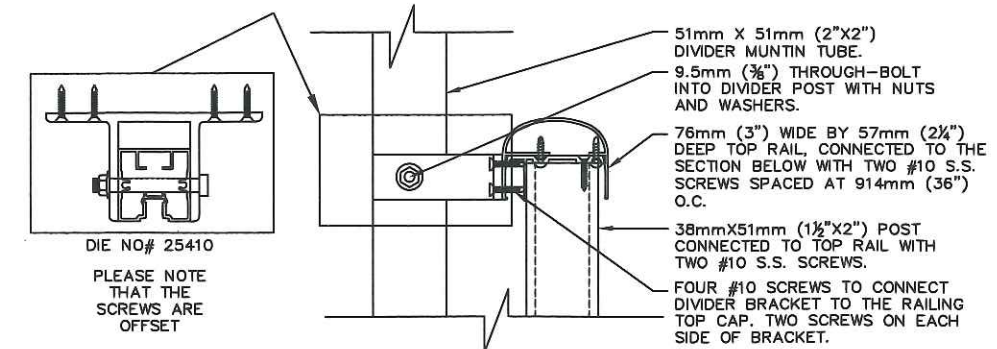
2
21 DETAIL A-A
SCALE 1:5



3
21 DETAIL B-B
SCALE 1:5



4
21 DETAIL C-C
SCALE 1:5



5
21 DETAIL D-D
SCALE 1:5

GENERAL NOTES

THESE DRAWINGS ARE COPYRIGHT AND THE PROPERTY OF TORO ALUMINUM RAILINGS INC. THE DRAWINGS MAY NOT BE USED FOR CONSTRUCTION WITHOUT THE PERMISSION OF TORO ALUMINUM RAILINGS INC. REPRODUCTION OF THESE DRAWINGS WITHOUT THE CONSENT OF TORO ALUMINUM RAILINGS INC. IS STRICTLY PROHIBITED. DO NOT SCALE THESE DRAWINGS, ANY ERRORS OR DISCREPANCY IS TO BE REPORTED IMMEDIATELY TO: TORO ALUMINUM RAILINGS INC.

ENGINEER STAMP:

THE DRAWING HAS BEEN REVIEWED FOR STRUCTURAL COMPLIANCE TO THE ONTARIO BUILDING CODE. DRAWINGS ARE NOT TO BE ALTERED IN ANY WAY WITHOUT THE WRITTEN CONSENT OF TORO ALUMINUM RAILINGS INC.

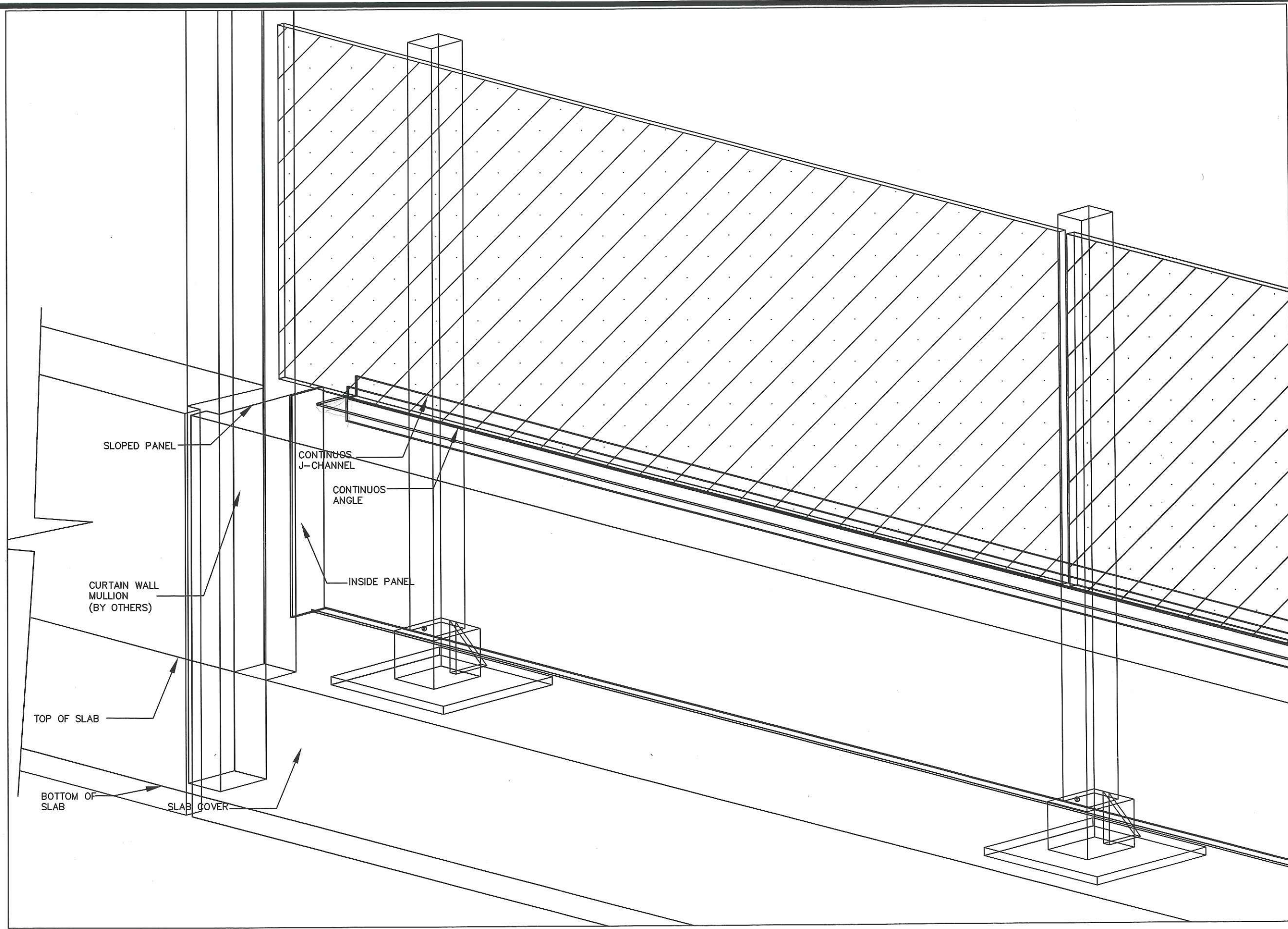


TORO ALUMINUM Railings Inc.

140 APPLEWOOD CRESENT
CONCORD, ONTARIO L4K 4E2
TELEPHONE: 905.761.1789
FAX: 905.761.1764

1	05/05/15	DRAWING ESTABLISHED	CS
No.	DATE	REVISIONS	BY

TITLE: BALCONY DIVIDER ELEVATION & SECTIONS TYPE 1			
DESCRIPTION: SQ ALEXANDRA PARK			
AREA: 38 CAMERON STREET TORONTO, ON			
PLOT DATE: MAY 05, 2015		SCALE: AS NOTED	
COMPANY PROJECT No: 12-115		DRAWING No: 21	
DRAWN BY: G.S.		CHECKED BY: A.K.	



GENERAL NOTES

THESE DRAWINGS ARE COPYRIGHT AND THE PROPERTY OF TORO ALUMINUM RAILINGS INC. THE DRAWINGS MAY NOT BE USED FOR CONSTRUCTION WITHOUT THE PERMISSION OF TORO ALUMINUM RAILINGS INC. REPRODUCTION OF THESE DRAWINGS WITHOUT THE CONSENT OF TORO ALUMINUM RAILINGS INC. IS STRICTLY PROHIBITED. DO NOT SCALE THESE DRAWINGS, ANY ERRORS OR DISCREPANCY IS TO BE REPORTED IMMEDIATELY TO: TORO ALUMINUM RAILINGS INC.

ENGINEER STAMP:

THE DRAWING HAS BEEN REVIEWED FOR STRUCTURAL COMPLIANCE TO THE ONTARIO BUILDING CODE. DRAWINGS ARE NOT TO BE ALTERED IN ANY WAY WITHOUT THE WRITTEN CONSENT OF TORO ALUMINUM RAILINGS INC.

TORO ALUMINUM Railings Inc.

140 APPLEWOOD CRESENT
 CONCORD, ONTARIO L4K 4E2
 TELEPHONE: 905.761.1789
 FAX: 905.761.1764

No.	DATE	REVISIONS	BY
2	08/18/15	DRAWING REVISED	EV
1	05/05/15	DRAWING ESTABLISHED	GS

TITLE: CURTAIN WALL AT RAILING ELEVATION AND FLOORPLAN

DESCRIPTION: SQ ALEXANDRA PARK

AREA: 38 CAMERON STREET TORONTO, ON

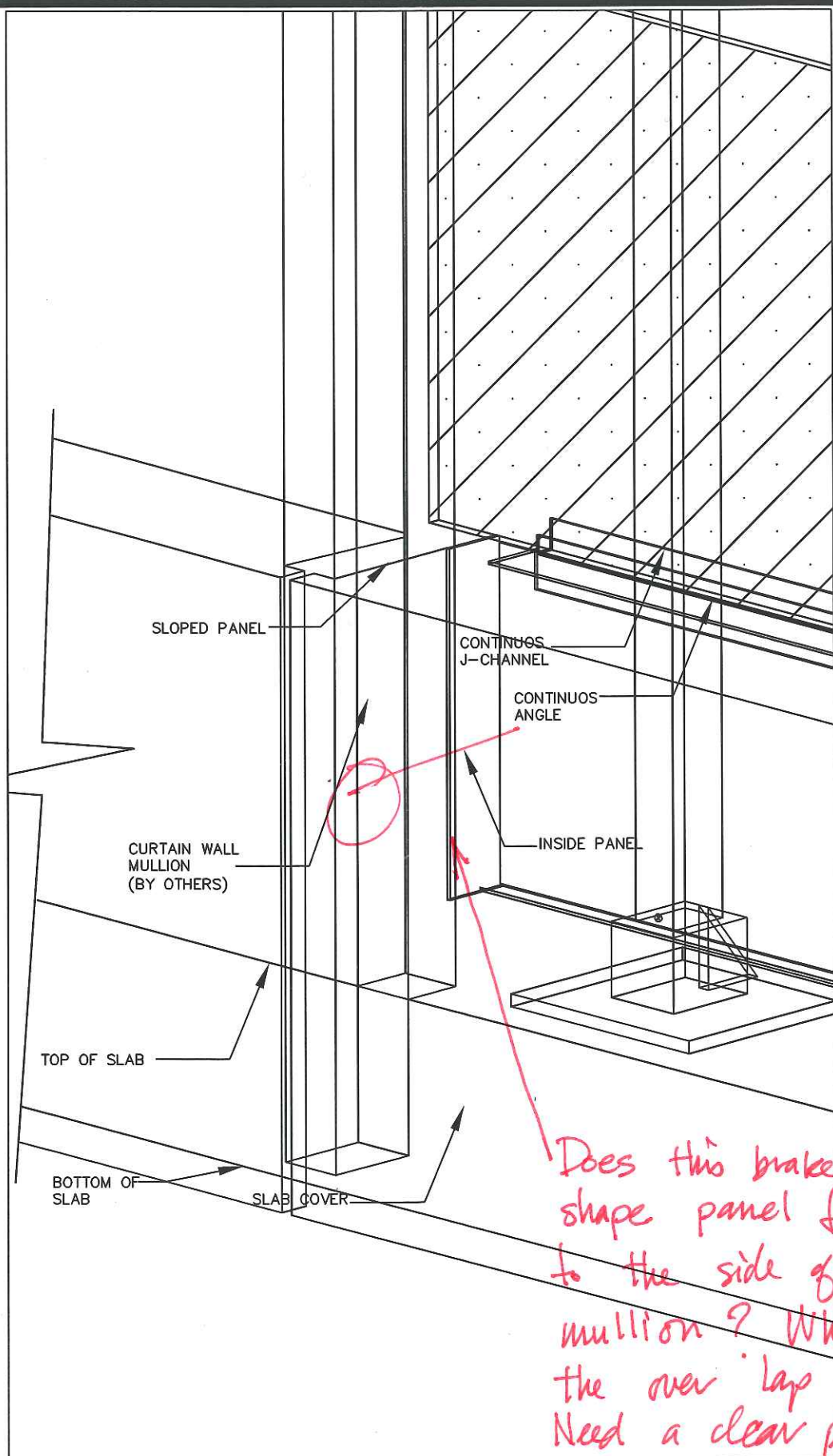
PLOT DATE: JUNE 13, 2015 **SCALE:** AS NOTED

COMPANY PROJECT No: 12-115 **DRAWING No:** A1

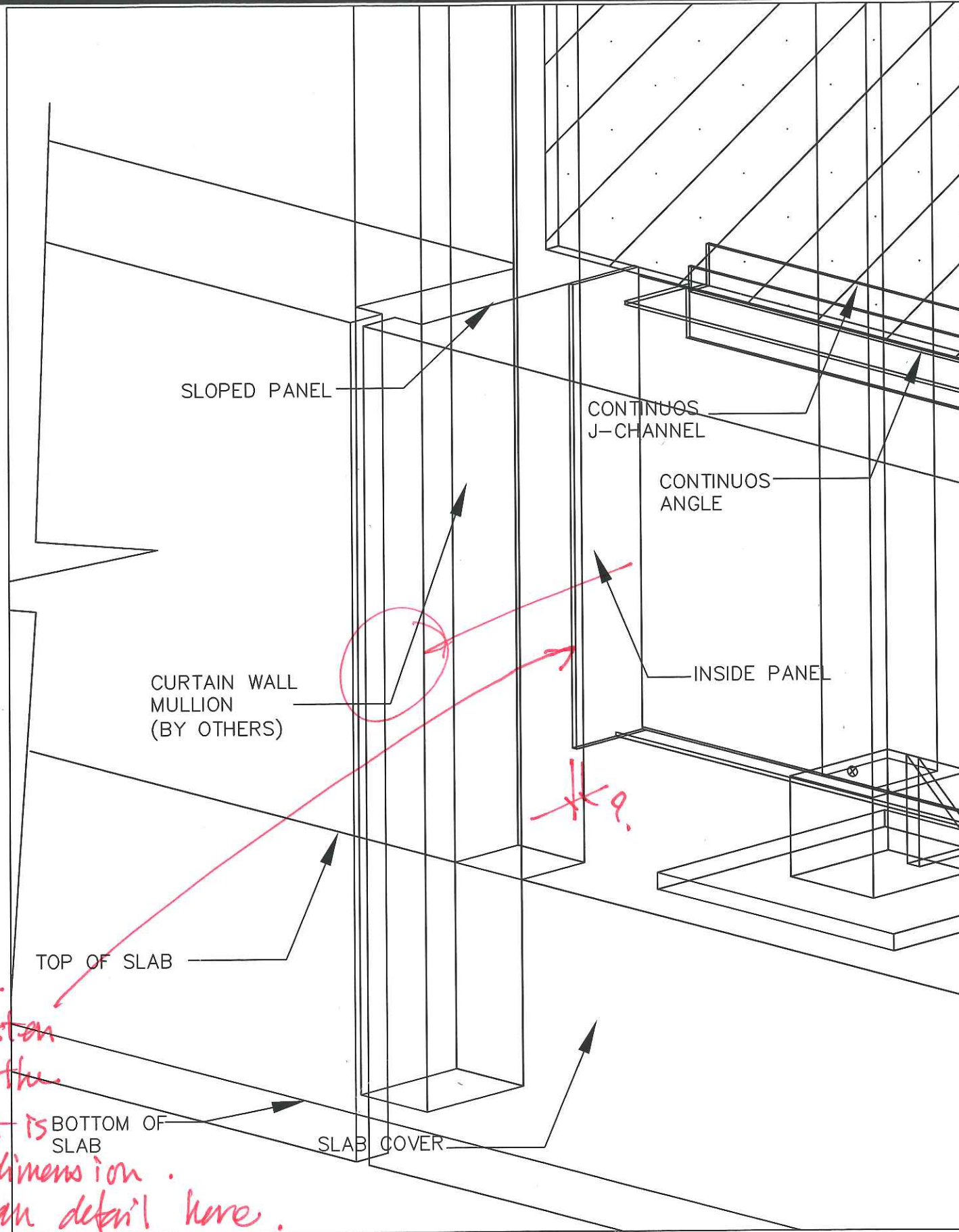
TORO PROJECT No:

DRAWN BY: E.V. **CHECKED BY:** A.K.

1 CURTAIN WALL AT RAILING ELEVATION
A1 NTS



CURTAIN WALL AT RAILING ISOMETRIC VIEW 1
NTS



CURTAIN WALL AT RAILING ISOMETRIC VIEW 2
NTS

*Does this brake
shape panel fasten
to the side of the
mullion? What is
the over lap dimension.
Need a clear plan detail here.*

GENERAL NOTES
THESE DRAWINGS ARE COPYRIGHT AND THE PROPERTY OF TORO ALUMINUM RAILINGS INC. THE DRAWINGS MAY NOT BE USED FOR CONSTRUCTION WITHOUT THE PERMISSION OF TORO ALUMINUM RAILINGS INC. REPRODUCTION OF THESE DRAWINGS WITHOUT THE CONSENT OF TORO ALUMINUM RAILINGS INC. IS STRICTLY PROHIBITED. DO NOT SCALE THESE DRAWINGS, ANY ERRORS OR DISCREPANCY IS TO BE REPORTED IMMEDIATELY TO: TORO ALUMINUM RAILINGS INC.

ENGINEER STAMP:
THE DRAWING HAS BEEN REVIEWED FOR STRUCTURAL COMPLIANCE TO THE ONTARIO BUILDING CODE. DRAWINGS ARE NOT TO BE ALTERED IN ANY WAY WITHOUT THE WRITTEN CONSENT OF TORO ALUMINUM RAILINGS INC.

TORO ALUMINUM Railings Inc.
140 APPLEWOOD CRESENT
CONCORD, ONTARIO L4K 4E2
TELEPHONE: 905.761.1789
FAX: 905.761.1764

No.	DATE	REVISIONS	BY
2	06/15/15	DRAWING REVISED	EV
1	05/05/15	DRAWING ESTABLISHED	GS

TITLE: CURTAIN WALL AT RAILING ISOMETRIC VIEWS
 DESCRIPTION: SQ ALEXANDRA PARK
 AREA: 38 CAMERON STREET TORONTO, ON
 PLOT DATE: JUNE 13, 2015 SCALE: AS NOTED
 COMPANY PROJECT No: 12-115 DRAWING No: A2
 TORO PROJECT No:
 DRAWN BY: E.V. CHECKED BY: A.K.

