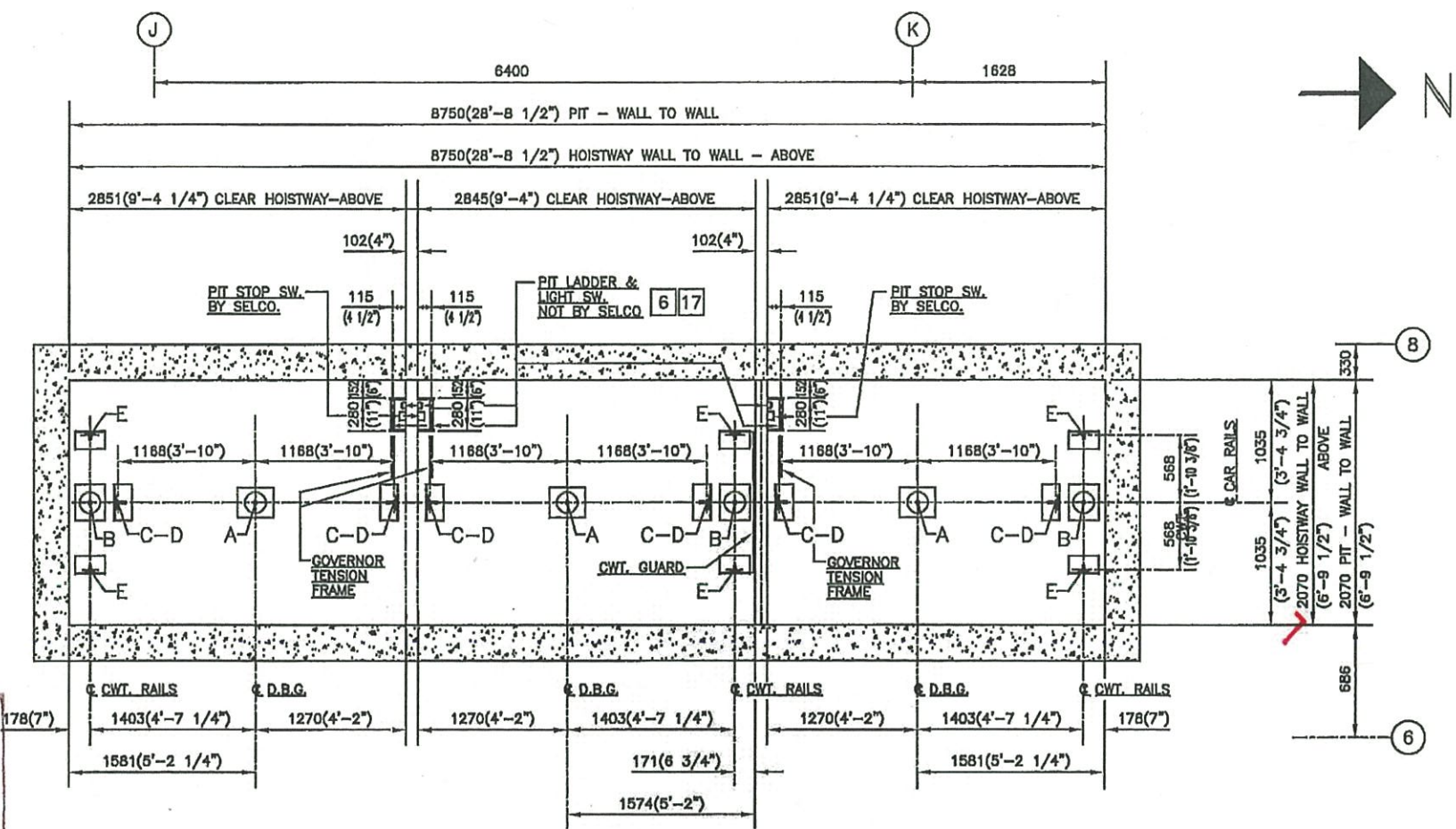


**Teeple Architects INC.**

Reviewed (✓)  
 Reviewed as noted (✓)  
 Revise and resubmit ( )  
 Not Reviewed ( )  
 Date: 2015.05.23  
 Reviewed by: [Signature]

This review by Teeple Architects Inc. is for the sole purpose of ascertaining conformance with the general design concept. This review shall not mean that Teeple Architects Inc. approves the detailed design inherent in the shop drawings, responsibility for which shall remain with the Contractor submitting same, and such review shall not relieve the Contractor of the responsibility for errors or omissions in the shop drawings or of the responsibility for meeting all requirements of the Code documents. The Contractor is responsible for all matters to be confirmed and completed at the site. All information that pertains solely to the technical aspects of the construction shall be provided to the Contractor.



ELEV. No. 1  
 ELEV. No. 2  
 ELEV. No. 3  
**PIT PLAN**  
 FIRE FIGHTER'S & MOVING ELEVATOR

PIT LOADS		
LOAD SYMBOL	LOAD CONDITION	LOADS
A	IMPACT ON CAR BUFFER SUPPORT	169.0 kN (38000 lbs.)
B	IMPACT ON CWT. BUFFER SUPPORT	140.0 kN (31500 lbs.)
C	VERTICAL IMPACT LOAD ON CAR RAIL AT SAFETY APPLIC.	80.0 kN (18000 lbs.)
D	WEIGHT OF ONE STACK OF CAR RAILS	1090 kg. (2400 lbs.)
E	WEIGHT OF ONE STACK OF CWT. RAILS	775 kg. (1700 lbs.)

NOTE: FOR DESIGN OF PIT SLAB, LOADS 'C' & 'D' MUST BE COMBINED.

**DRAWING REVIEW**

This review of this drawing does not in any way relieve the contractor of responsibility for its accuracy or for compliance with the contract documents.

<input checked="" type="checkbox"/> No comment	Submission No. _____
<input type="checkbox"/> Amend & Submit	Project No. <u>13015</u>
<input type="checkbox"/> Rejected	By <u>HP</u>
<input type="checkbox"/> See Remarks	Date <u>May 23, 2015</u>

**JABLONSKY, AST AND PARTNERS**  
 Consulting Engineers  
 1129 Leslie Street  
 Don Mills, Ont. M3C 2K5

SQ ALEXANDRIA PARK  
 BLOCK 11  
 TORONTO, ONTARIO  
 ELEVATORS No. 1 to 3  
**PIT PLAN**

IMPORTANT - THE FOLLOWING NOTES SHOULD BE CONSIDERED BY THE OWNER OR HIS AGENT BEFORE APPROVING THESE DRAWINGS.  
 PROVISIONS BY: OWNER

- CONSTRUCTION, FIRE RATING AND VENTING OF HOISTWAY AND MACHINE ROOM ACCORDING TO ELEVATOR AND BUILDING CODES.
- HOISTWAY FLOORED TO WITHIN 25mm. ALL LEDGES OVER 100mm REBELED 75 TO HORIZONTAL.
- ACCESS ROUTE TO MACHINE ROOM FROM EXISTING MINIMAL SLOPE INCLINED TO 5% MINIMAL GUTTER OR PARAPET ON OPEN ROOF.
- MACHINE ROOM MAINTAINED AT 5-32° C. HEAT GENERATED 10045 W (34350 B.T.U./HR.)
- REGULAR AND EMERGENCY POWER SUPPLY AND WIRING ACCORDING TO INFORMATION TO FOLLOW.
- 110V LIGHT FIXTURE(S), SWITCH AND OUTLET IN EACH PIT AND MACHINE ROOM. SWITCH ON LOCK WIND SIDE OF DOOR.
- ELEVATOR FEEDERS INCLUDING LOCKABLE FUSED DISCONNECT SWITCHES OR CIRCUIT BREAKERS.
- FEED LINE TO DISPATCHER DISCONNECT SWITCH MUST RUN FROM SPLITTER BOX.
- SUPPORT FOR MACHINE BEAMS, SHEAVE BEAMS AND BUFFERS STRUCTURALLY DESIGNED FOR REACTIONS SHOWN.
- ROUTING OF MACHINE BEAMS OR POURING OF FLOOR ABOVE HOISTWAY TO BE DONE AFTER MACHINE IS IN PLACE.
- HOIST BEAMS IN MACHINE ROOM FOR A LINE LOAD OF .23.0 kN/m, LOCATED AS SHOWN.
- RAIL BRACKET SUPPORTS SPACED AND DESIGNED FOR RAIL REACTIONS SHOWN AT EVERY FLOOR AND ROOF LEVELS. EXTRA SUPPORTS REQUIRED WHEN FLOOR HEIGHT EXCEEDS MAXIMUM RAIL BRACKET SPACING.
- SECURELY ANCHORED 50 X 100mm BEAMS AT EVERY FLOOR AND ROOF LEVELS. EXTRA BEAMS REQUIRED WHEN FLOOR HEIGHT EXCEEDS MAXIMUM RAIL BRACKET SPACING.
- POCKETS, PATCHING, BRACKETS AND PIT WATERPROOFING OR SUMP WHERE REQUIRED.
- FRONT WALLS (ROUGH OPENINGS) TO BE ERECTED AFTER ENTRANCE FRAMES HAVE BEEN INSTALLED. ENTRANCE FRAMES ARE NOT DESIGNED TO SUPPORT OVERHEAD WALL LOADS. SADDLES TO BE GRouted FULL LENGTH.
- SILL RECESS AT REAR SERVING FLOOR(S) AS SHOWN.
- ELEVATOR PIT LADDER(S) EXTENDING 1220mm ABOVE THE BOTTOM LANDING AND LOCATED AS SHOWN.

**BUFFER REACTIONS - SEE CHART THIS SHEET**

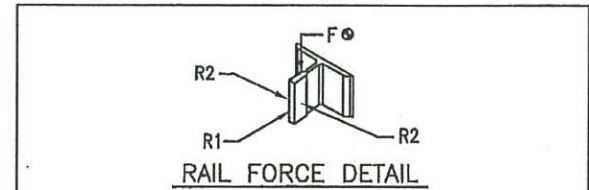
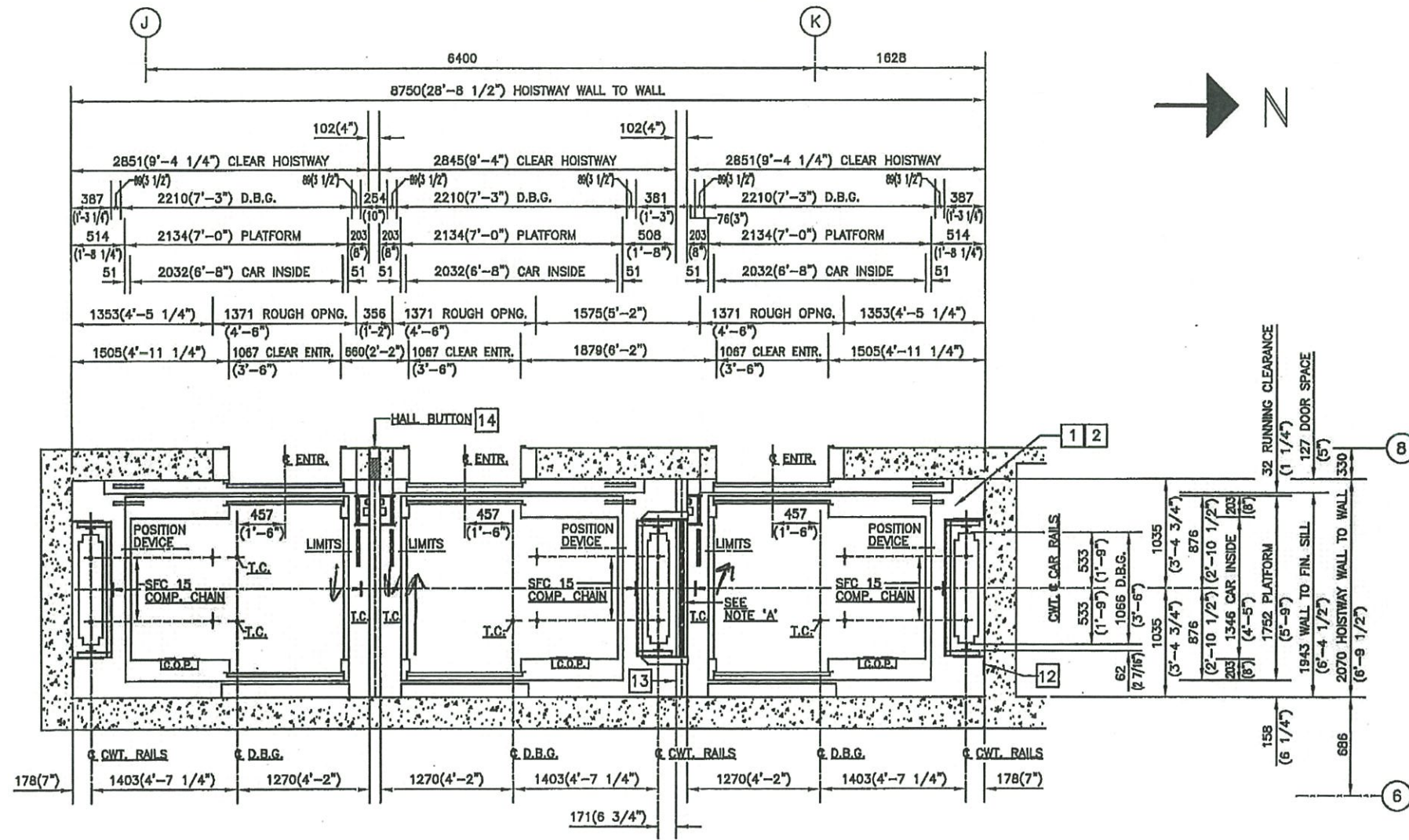
CAR No.	CAR	CWT.

**ELEVATOR(S) DATA**

CLASSIFICATION	PASSENGER
CAPACITY	1134 kg (2500 lbs.)
SPEED	1.78 m/s (350 f.p.m.)
ROPING	1:1
OPERATION	GROUP AUTOMATIC
CONTROL	V V V F
LANDINGS/OPENINGS	#1-18/17(14-FRONT, 3-REAR) / #2-3-11/11(11-FRONT, 2-REAR)
EMERGENCY POWER	YES
FIREFIGHTERS ELEV. (CAR No.)	3
CAR SAFETY (TYPE)	MODEL 480 TYPE 'B'-F.B.C.
CWT. SAFETY (TYPE)	N/A
CAR ENCLOSURE (TYPE)	SPECIAL
CWT. FILLERS (QTY./WT.)	
CWT. FILLERS (DWG. No.)	
CAR GUIDES (TYPE)	ROLLER GUIDES - DELCO 152(6") DIA.
CWT. GUIDES (TYPE)	ROLLER GUIDES - DELCO 76(3") DIA.
CAR TOE GUARD (LGTH.)	1220mm (48")
PLATFORM (TYPE)	STEEL FRAME
FRAME-FRONT/BACK (SIZE)	FORMED CHANNEL
FRAME-SIDES (SIZE)	FORMED CHANNEL
JOISTS (SIZE)	FORMED CHANNEL
FLOOR (TYPE)	1 LAYER-3/4" PLYWOOD + FIN. FLOORING
AREA (m SQ.)	29.45 sq.ft. (2.73m²)
HOIST ROPES (QTY./DIA.)	5 X 5/8" X 210'-0"
GOV. ROPES (QTY./DIA.)	1 X 3/8" X 385'-0"
ROPE FASTENING (TYPE)	WEDGE SHACKLES
COMPENSATION (QTY./DIA.)	(2) SFC15 - 190'-0"
GOVERNOR (QTY./TYPE)	MODEL 208 / 2.18m/s (425f.p.m.)
BUFFERS (TYPE/SIZE)	MODEL 500 / 228mm (9")
CAR RAILS	16.4 kg/m (11 lbs./ft.)
CWT. RAILS	12 kg/m (8.0 lbs./ft.)
MAX. BRACKET SPACING-CAR	3658(12'-0")
MAX. BRACKET SPACING-CWT.	3700(12'-2")
MACHINE (TYPE)	TGD1-2535-HV
DRIVE SHEAVE (DIA.)	650 mm (25.59")
DEFLECTOR SHEAVE (DIA.)	640 mm (25.2")
MOTOR	16.4 kW (22 H.P.)
ROPE GRIPPER	N/A
TRANSFORMER	
CAR	2552kg (5625lbs.)
COUNTERWEIGHT (5X OVERHAUNT)	3100kg (6835lbs.)
LOAD ON SAFETY	3995kg (8805lbs.)
SHEAVE SHAFT LOAD	7350kg (16200lbs.)
MACHINE	1588kg (3500lbs.)
IDLER SHEAVE	148kg (325lbs.)
HOIST ROPES	279kg (615lbs.)
COMPENSATION	259kg (570lbs.)
TRAVELLING CABLES	78kg (170lbs.)
CONTROLLER	275kg (600lbs.)
TRANSFORMER	230kg (500lbs.)

DRWN.	W.T.	OWNER
PRGM. DATE	10/06/14	ARCH/ENG. TEEPLE ARCHITECTS
FINAL DATE		CONTRACTOR
CHKD.		INSTALL BY SELCO ELEVATORS LTD.

'b'	PIT LADDER SIZE & LOCATION REVISED. GOVERNOR TENSION MOTOR H.P. ALL REVISED IN ELEVATOR DATA.	W.T.	03/08/15
'a'	DIMENSIONS TO COLUMN LINES REVISED. LAYOUT APPROVED AND MADE FINAL.	W.T.	12/27/14
No.	REVISION	BY	DATE
BLDG. NAME	SQ ALEXANDRIA PARK - BLOCK 11		
ADDRESS	TORONTO, ONT.		
	THREE (3) GEARED PASSENGER ELEVATORS		
	<b>SELCO ELEVATORS LTD.</b>		
DRWG. No.	SQ ALEX PARK	REV. 'B'	SHEET 1 of 8



	CAR	APPLICATION	CWT.	APPLICATION
R1	2.10kN (460lbs.)	SAFETY	1.40kN (310lbs.)	RUNNING
R2	0.30kN (65lbs.)	LOADING	0.16kN (35lbs.)	RUNNING
F0	80.0kN(18000lbs.)	FORCE	---	FORCE

THIS FORCE INCLUDES DOUBLING FOR IMPACT.

**NOTE 'A':**  
 DIVIDING BEAMS BY OTHER CONTR. TO BE PROVIDED AT ALL FLOOR LEVELS 'P2', 'P1', JAK TO '14th' FLOOR, 610mm BELOW EACH ROOM FLOOR SLAB AND BETWEEN FLOORS 'P1' & 'P2'.

ELEV. No. 1

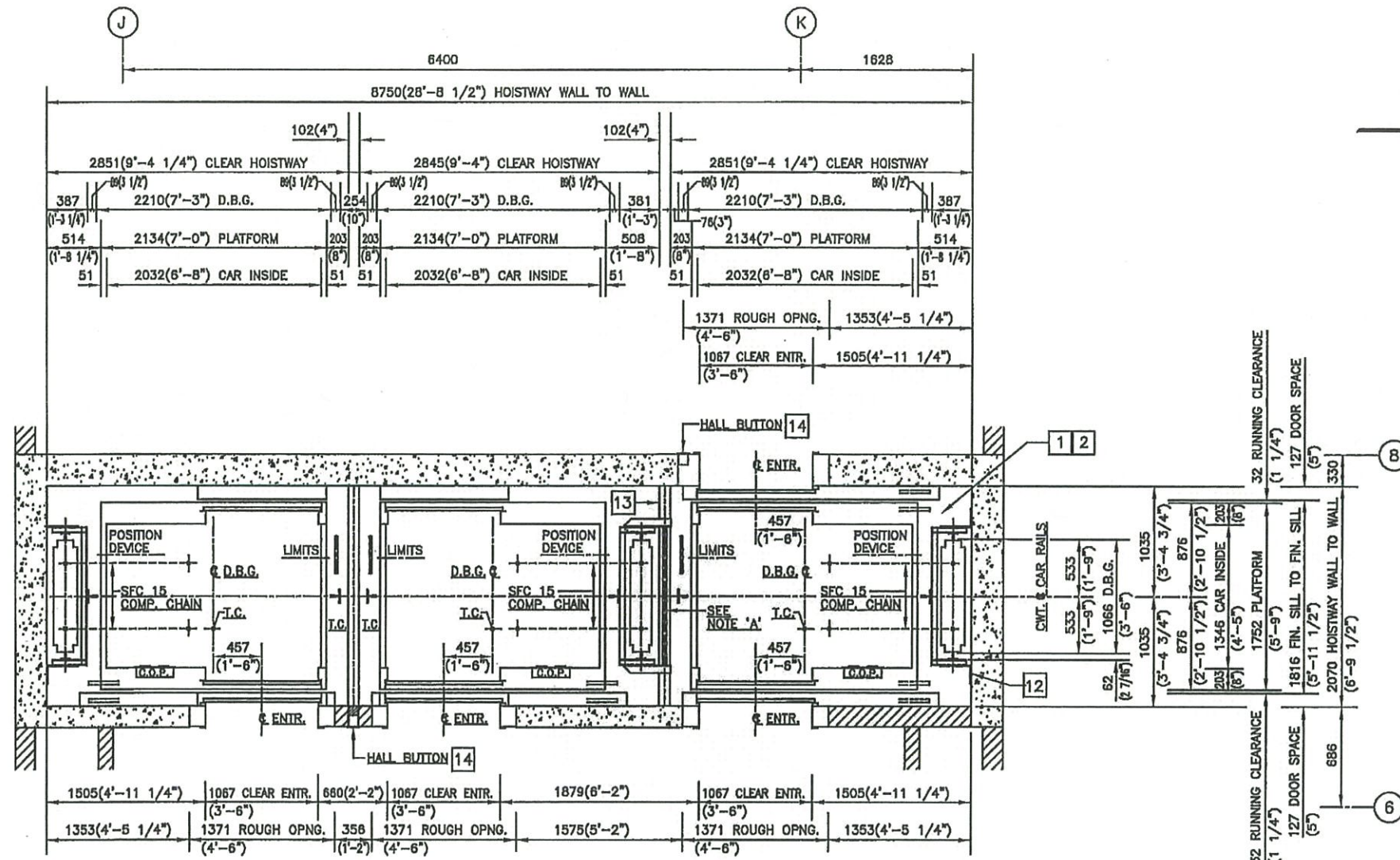
ELEV. No. 2

ELEV. No. 3  
 FIRE FIGHTER'S &  
 MOVING ELEVATOR

**HOISTWAY PLAN**  
**'P1' & 'P2' FLOORS**

SQ ALEXANDRIA PARK  
 BLOCK 11  
 TORONTO, ONTARIO  
 ELEVATORS No. 1 to 3  
 HOISTWAY PLAN at  
 'P1' & 'P2' FLOORS

REVISION	BY	DATE
'B' GOVERNOR IDLER SHEAVE, LIMITS & T.O. RELOCATED.		W.T. 03/06/15
'A' DIMENSIONS TO COLUMNS LINES REVISED, LAYOUT APPROVED AND MADE FINAL.		W.T. 12/27/14
BLDG. NAME SQ ALEX PARK		
ADDRESS TORONTO, ONT.		
THREE (3) GEARED PASSENGER ELEVATORS		
SELCO ELEVATORS LTD.		
DRWG. No.	SQ ALEX PARK	REV. SHEET B 2 of 8



ELEV. No. 1

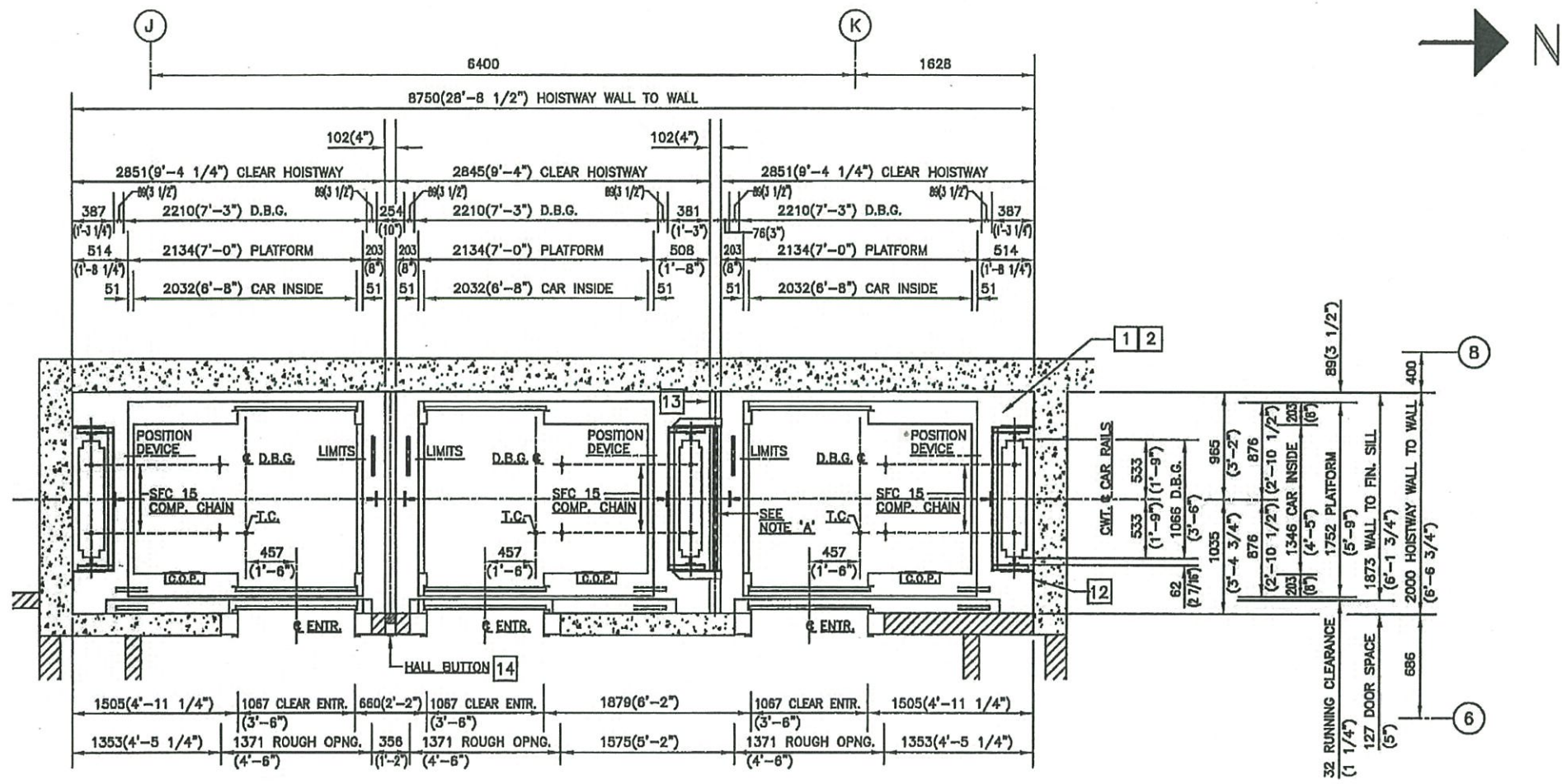
ELEV. No. 2

ELEV. No. 3  
FIRE FIGHTER'S &  
MOVING ELEVATOR

HOISTWAY PLAN  
'1st' FLOOR

SQ ALEXANDRIA PARK  
BLOCK 11  
TORONTO, ONTARIO  
ELEVATORS No. 1 to 3  
HOISTWAY PLAN at  
'1st' FLOOR

No.	REVISION	BY	DATE
	'B' GOVERNOR IDLER SHEAVE, LIMITS & T.C. RELOCATED.		W.T. 03/08/15
	'A' DIMENSIONS TO COLUMNS LINES REVISED. LAYOUT APPROVED AND MADE FINAL.		W.T. 12/27/14
BLDG. NAME		SQ ALEX PARK	
ADDRESS		TORONTO, ONT.	
THREE (3) GEARED PASSENGER ELEVATORS			
SELCO ELEVATORS LTD.			
DRWG. No.	SQ ALEX PARK	REV. B	SHEET 3 of 8



ELEV. No. 1

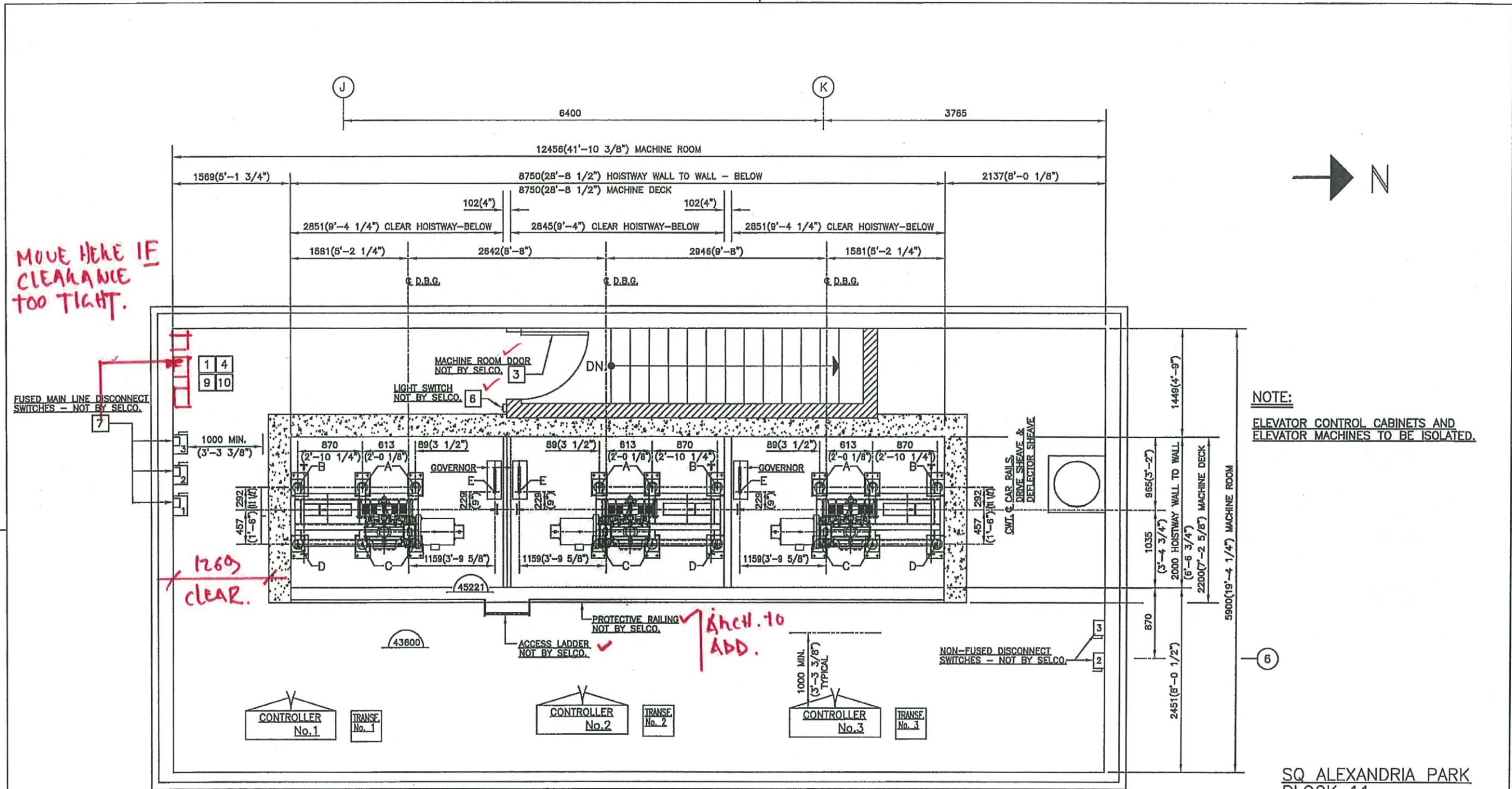
ELEV. No. 2

ELEV. No. 3  
FIRE FIGHTER'S &  
MOVING ELEVATOR

HOISTWAY PLAN  
'2nd' to '14th' FLOORS

SQ ALEXANDRIA PARK  
BLOCK 11  
TORONTO, ONTARIO  
ELEVATORS No. 1 to 3  
HOISTWAY PLAN at  
'2nd' to '14th' FLOORS

'B' GOVERNOR IDLER SHEAVE, LIMITS & T.C. RELOCATED.		W.T.	03/09/15
DIMENSION CENTRELINE CAR RAILS TO REAR WALL REVISED.		W.T.	12/27/14
'A' DIMENSIONS TO COLUMN LINES REVISED, LAYOUT APPROVED AND MADE FINAL.		W.T.	12/27/14
No.	REVISION	BY	DATE
BLDG. NAME	SQ ALEX PARK		
ADDRESS	TORONTO, ONT.		
THREE (3) GEARED PASSENGER ELEVATORS			
SELCO ELEVATORS LTD.			
DRWG. No.	SQ ALEX PARK	REV. B	SHEET 4 of 8



MOVE HERE IF CLEARANCE TOO TIGHT.

NOTE:  
ELEVATOR CONTROL CABINETS AND ELEVATOR MACHINES TO BE ISOLATED.

ELEV. No. 1 ELEV. No. 2 ELEV. No. 3  
FIRE FIGHTER'S & MOVING ELEVATOR

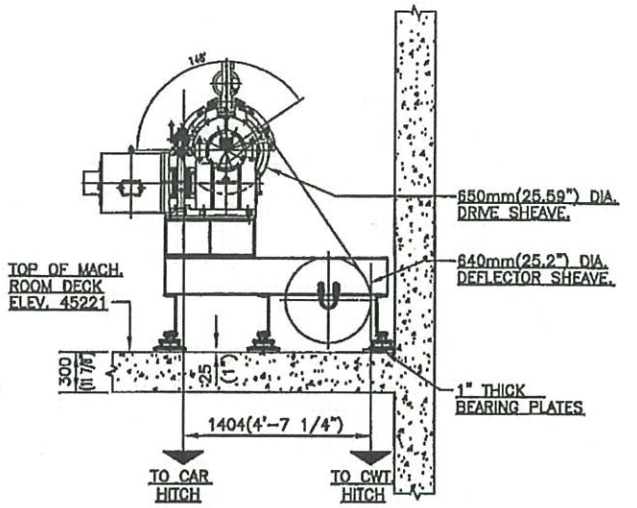
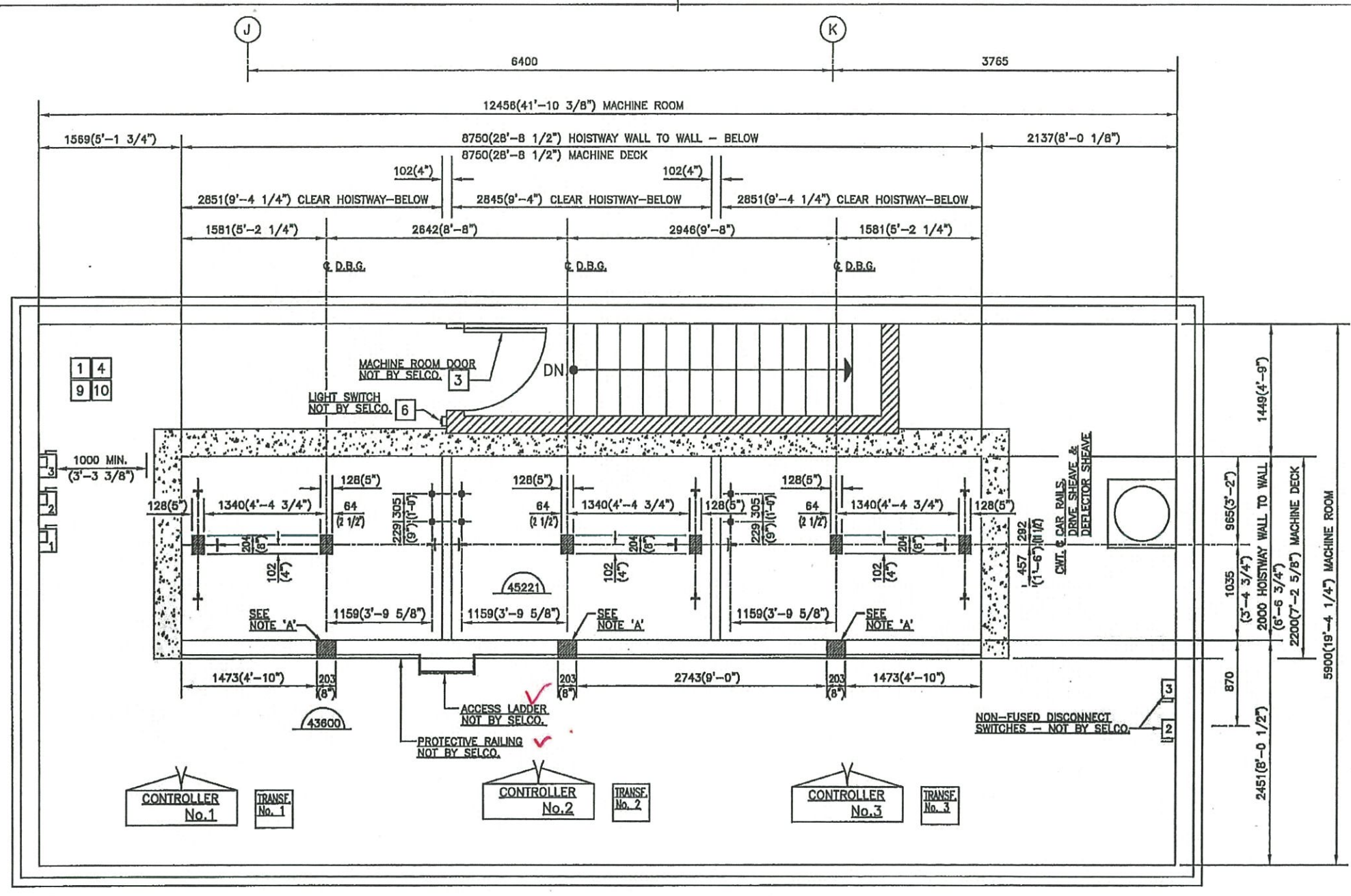
SQ ALEXANDRIA PARK  
BLOCK 11  
TORONTO, ONTARIO  
ELEVATORS No. 1 to 3  
MACHINE ROOM PLAN

REACTIONS (INCLUDING IMPACT)	
A	36.5kN ( 8200lbs.)
B	26.5kN ( 6000lbs.)
C	26.5kN ( 6000lbs.)
D	22.0kN ( 5000lbs.)
E	7.0kN ( 1500lbs.)

STRUCTURAL TO REVIEW.

MACHINE ROOM PLAN

'B'	MACHINE TYPE CHANGED. REACTION LOADS 'A' TO 'D' REVISED. GOVERNORS ADDED.	W.T.	03/06/15
'A'	MACHINE ROOM SIZE REVISED. MACHINES NOW ON MACHINE DECK. PROTECTIVE RAILING & ACCESS LADDER ADDED. REACTION LOADS RELOCATED. GOVERNORS DELETED FROM MACHINE ROOM. FUSED MAIN LINE DISCONNECT SW'S. RELOCATED. LAYOUT APPROVED AND MADE FINAL.	W.T.	12/27/14
No.	REVISION	BY	DATE
BLDG. NAME		SQ ALEXANDRIA PARK-BLOCK 11	
ADDRESS		TORONTO, ONT.	
THREE (3) GEARED PASSENGER ELEVATORS			
SELCO ELEVATORS LTD.			
DRWG. No.	SQ ALEX PARK	REV. 'B'	SHEET 5 of 8



MACHINE MOUNTING DETAIL

ELEV. No. 1  
ELEV. No. 2  
ELEV. No. 3  
FIRE FIGHTER'S & MOVING ELEVATOR

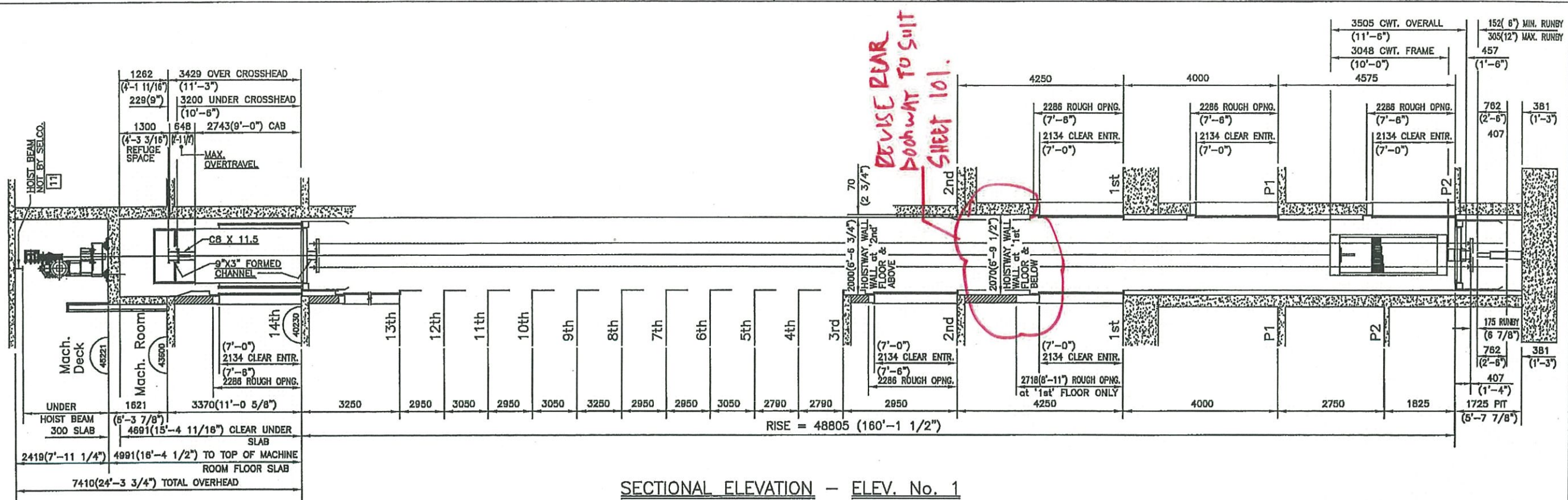
MACHINE ROOM PLAN  
HOLES IN FLOOR SLAB

NOTE 'A':  
203mm X 203mm (8" X 8")  
WIRING HOLE IN FRONT WALL  
DIRECTLY BELOW MACHINE  
DECK FLOOR SLAB.

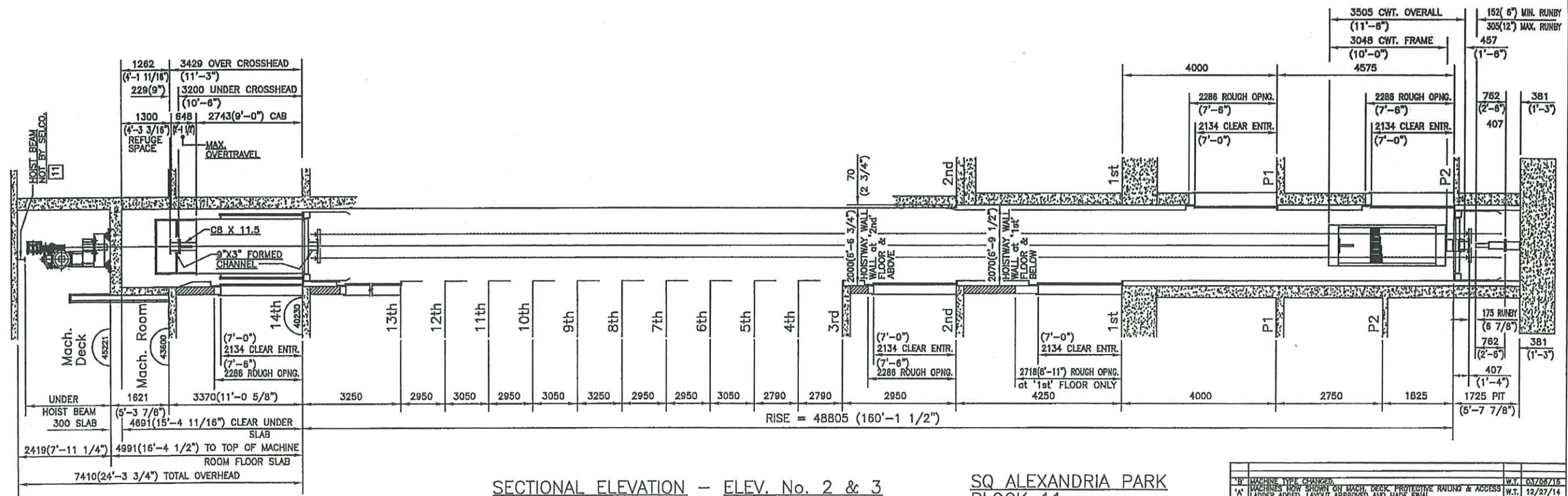
NOTE 'B':  
SHADED AREAS ARE HOLES IN  
MACHINE DECK FLOOR SLAB  
ALL ROUND HOLES ARE 64mm(2 1/2")  
DIA. - NOT BY SELCO.

SQ ALEXANDRIA PARK  
BLOCK 11  
TORONTO, ONTARIO  
ELEVATORS No. 1 to 3  
MACHINE ROOM PLAN  
HOLES IN FLOOR SLAB  
MACHINE DETAIL

No.	REVISION	BY	DATE
	'B' GOVERNOR ROPE HOLES ADDED. MACHINE MOUNTING DETAIL REVISED.		W.T. 02/08/15
	'A' MACHINE ROOM SIZE REVISED. MACHINE DECK ADDED. PROTECTIVE RAILING AND ACCESS LADDER ADDED. GOVERNORS NOW BELOW MACH. DECK FLOOR SLAB. WIRING HOLES ADDED IN FRONT HOISTWAY WALL. NOTE 'A' ADDED. LAYOUT APPROVED AND MADE FINAL.		W.T. 12/27/14
BLDG. NAME		SQ ALEXANDRIA PARK-BLOCK 11	
ADDRESS		TORONTO, ONT.	
THREE (3) GEARED PASSENGER ELEVATORS			
SELCO ELEVATORS LTD.			
DRWG. No.	SQ ALEX PARK	REV. 'B'	SHEET 6 of 8



SECTIONAL ELEVATION - ELEV. No. 1

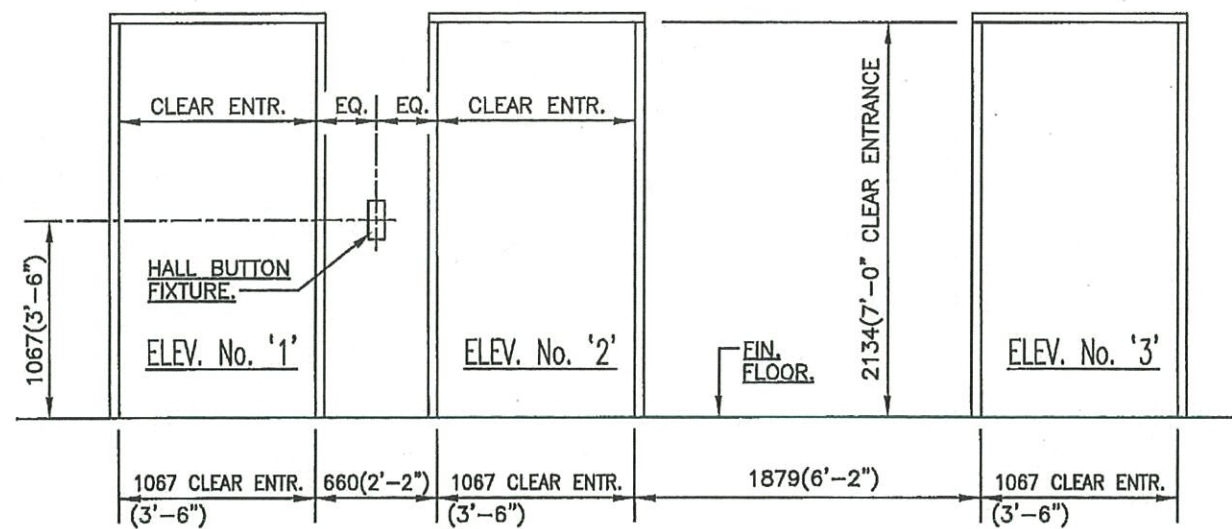


SECTIONAL ELEVATION - ELEV. No. 2 & 3

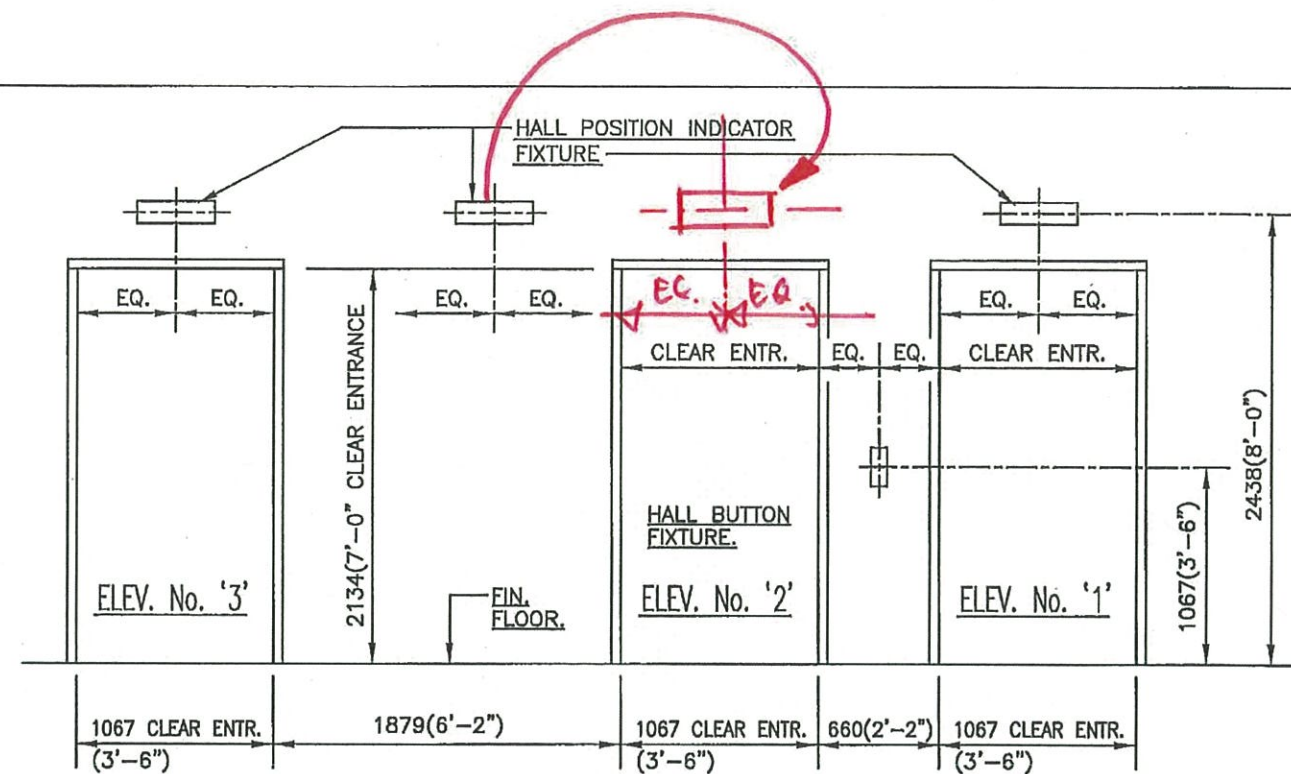
SQ ALEXANDRIA PARK  
 BLOCK 11  
 TORONTO, ONTARIO  
 ELEVATORS No. 1 to 3  
 SECTIONAL ELEVATIONS

NO.	REVISION	BY	DATE
1	MACHINE TYPE CHANGED		03/08/15
2	MACHINES NOW SHOWN ON MACH. DECK, PROTECTIVE RAILING & ACCESS LADDER ADDED, LAYOUT APPROVED AND MADE FINAL		12/27/14
BLDG. NAME SQ ALEXANDRIA PARK			
ADDRESS TORONTO, ONT			
THREE (3) GEARED PASSENGER ELEVATORS			
SELCO ELEVATORS LTD.			
DRWG. No.	ALEX PARK	REV. B	SHEET 7 of 8

*\* TRIBEL TO CONFIRM IF THERE ARE INDICATORS AT THESE LEVELS. \**

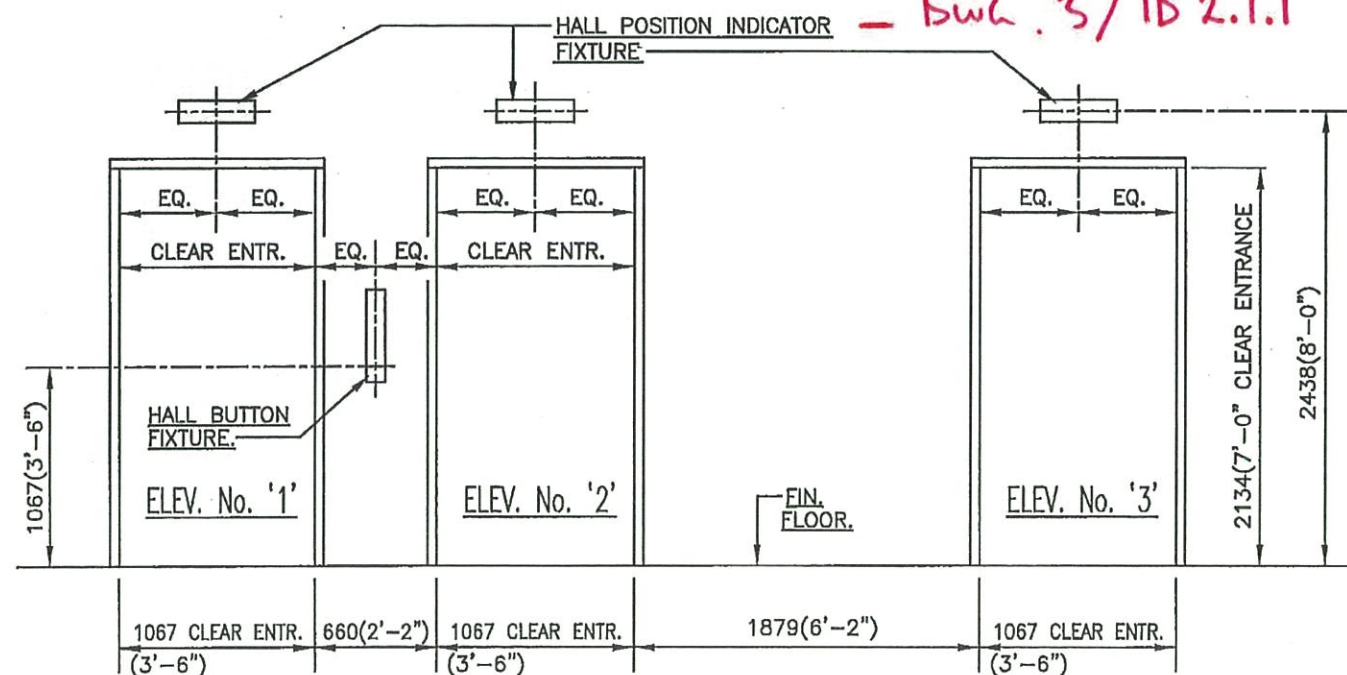


HALL FIXTURE DETAIL at '2nd' to '14th' FLOORS

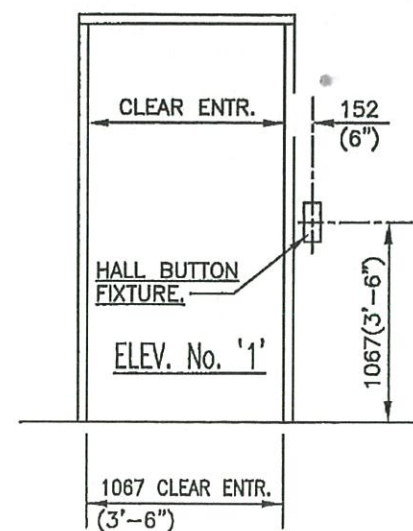


HALL FIXTURE DETAIL at 'P1' & 'P2' FLOORS

*TO BE COORDINATED WITH INTERIORS - DWG. 3/ID 2.1.1*



HALL FIXTURE DETAIL at '1st' FLOOR

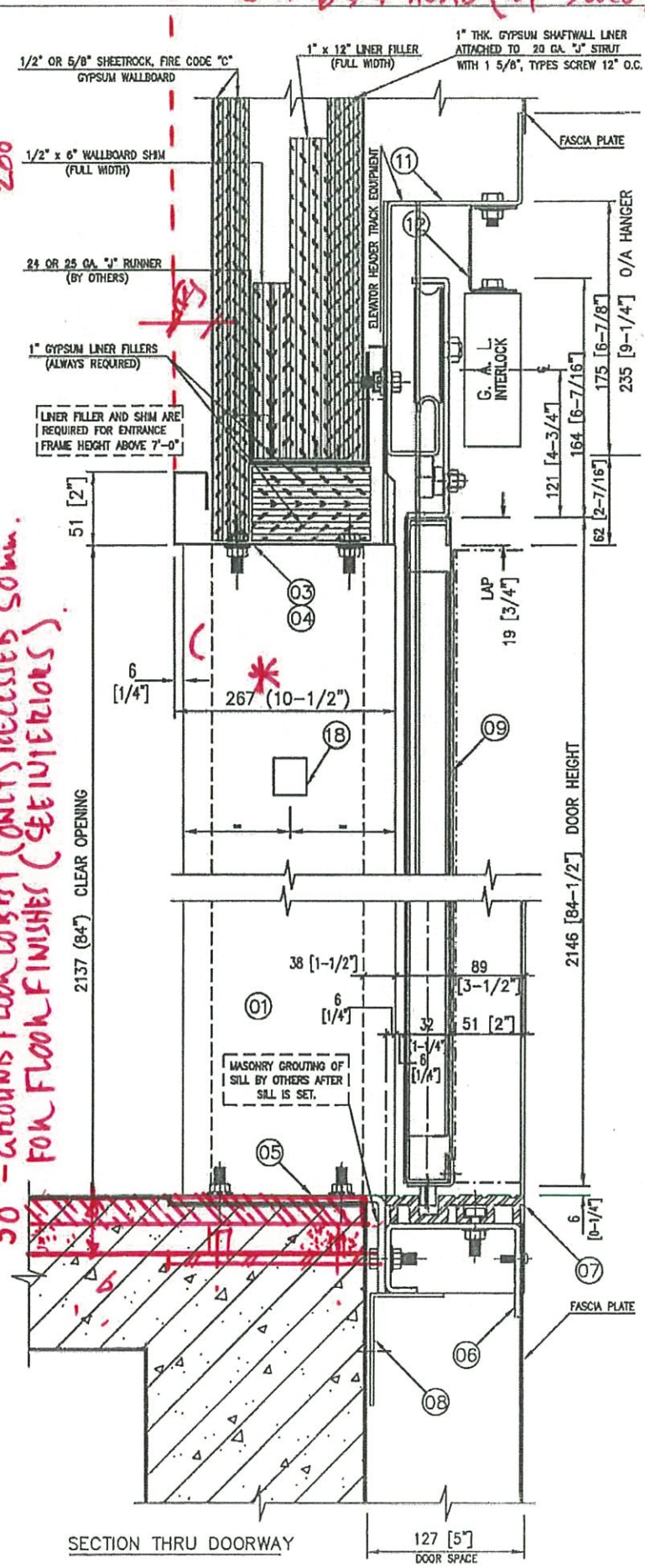
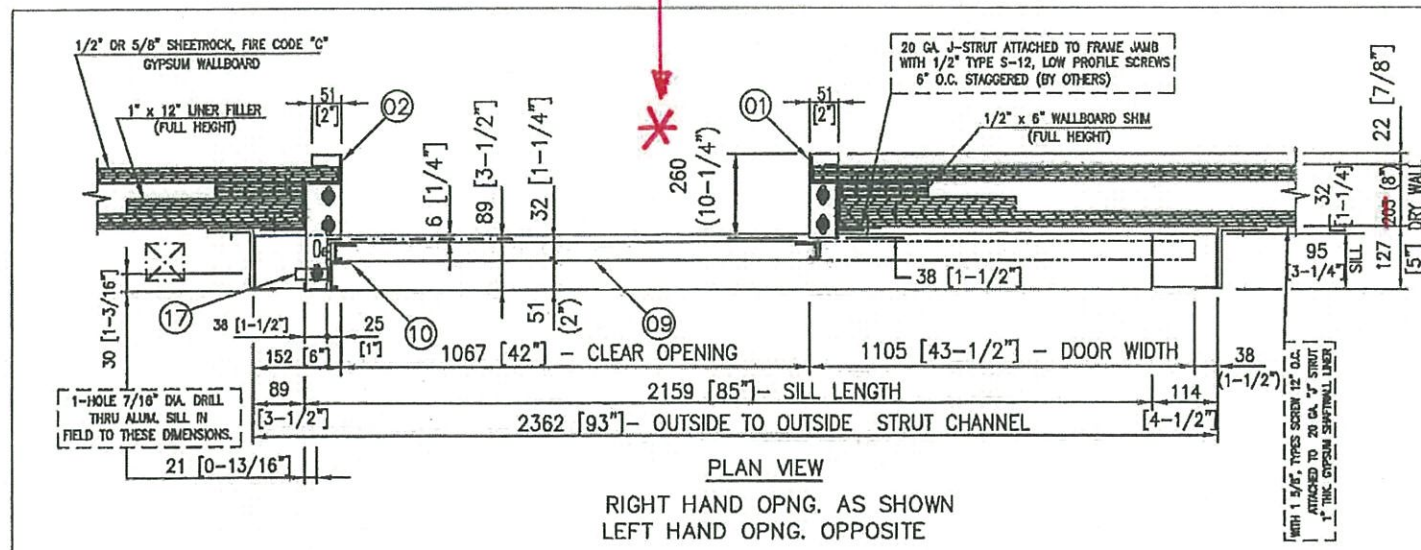


HALL FIXTURE DETAIL REAR ENTRANCE at '1st'

SQ ALEXANDRIA PARK  
BLOCK 11  
TORONTO, ONTARIO  
ELEVATORS No. 1 to 3  
HALL FIXTURE DETAILS

BLDG. NAME	SQ ALEXANDRIA PARK - BLOCK 11
ADDRESS	TORONTO, ONT.
THREE (3) GEARED PASSENGER ELEVATORS	
SELCO ELEVATORS LTD.	
DRWG. No.	SQ ALEX PARK
REV. B	SHEET 8 of 8

DIMENSION FROM SHAFT WALL TO WALL FINISH (GLASS) LEVEL.  
 \* TO BE PROVIDED BY INTERIORS.  
 JAMBS & HEAD (BY SELCO) DIMENSIONS BY INTERIORS.



THIS DWG. NO.	QTY.	PER UNIT	ITEM NO.	DESCRIPTION OR NAME OF PART	IDENTIFICATION NUMBER
003	002	001	01	SLIDE POST	
			02	STRIKE POST	
			03	HEADER TRIM	
			04		
	2		05	SUPPORT ANGLE	
	1		06	SILL SUPPORT CHANNEL	
	1		07	SILL - ALUMINUM	
	1		08	GROUT ANGLE	
	1		09	HALL DOOR ASSEMBLY	
	1		10	SIGHT GUARD	
	1		11	HEADER TRACK	
	1		12	INTERLOCK SUPPORT BRACKET	
	2		13	STRUT CHANNEL	
	4		14	THE ANGLE	
	1		15	SPRINTER ASSEMBLY	
	1		16	MOUNTING BRACKET FOR INTERLOCK KEEPER	
	1		17	ACCESS KEY SWITCH @ 14th FLOOR	
	2		18	JAMB PLATE	

- 14 SETS OF RH ENTRANCES REQUIRED FOR ELEVATOR 1  
 (2 C.R.S. CLADDED WITH ST.STL.#4 FIN. 14TH & 1ST FLOORS  
 C.R.S. PRIME POWDER COAT FIN. FOR OTHER FLOORS)
- 14 SETS OF LH ENTRANCES REQUIRED FOR ELEVATOR 2  
 (2 C.R.S. CLADDED WITH ST.STL.#4 FIN. 14TH & 1ST FLOORS  
 C.R.S. PRIME POWDER COAT FIN. FOR OTHER FLOORS)
- 14 SETS OF LH ENTRANCES REQUIRED FOR ELEVATOR 3  
 (2 C.R.S. CLADDED WITH ST.STL.#4 FIN. 14TH & 1ST FLOORS  
 C.R.S. PRIME POWDER COAT FIN. FOR OTHER FLOORS)
- ENTRANCES ARE DRILLED FOR G.A.L. EQUIPMENT.
- EMERGENCY KEY-HOLE REQUIRED FOR ALL ENTRANCES.
- ENTRANCES ARE ULC LABELLED AND FIRE RATED FOR 1 1/2 HOUR.
- PLEASE CONFIRM <sup>200mm</sup> DRY WALL THICKNESS.

WALL ASSEMBLY IS 200mm THICK.  
 (CONC/ CONC.BLOCK (100)/ GYPSUM.  
 RD. WITH GYPSUM SHAFTWALL FINISH  
 AT HOISTWAY SIDE, GYPSUM FINISHING &  
 INTERIOR FINISHES, LOBBY SIDE.)  
 INTERIORS TO CONFIRM HOISTWAY  
 JAMBS DEPTH & CONFIRM MATERIALS.

50 - Grounds Floor Lobby (ONLY RECESSED SOME).  
 FOR FLOOR FINISHES (SEE INTERIORS)

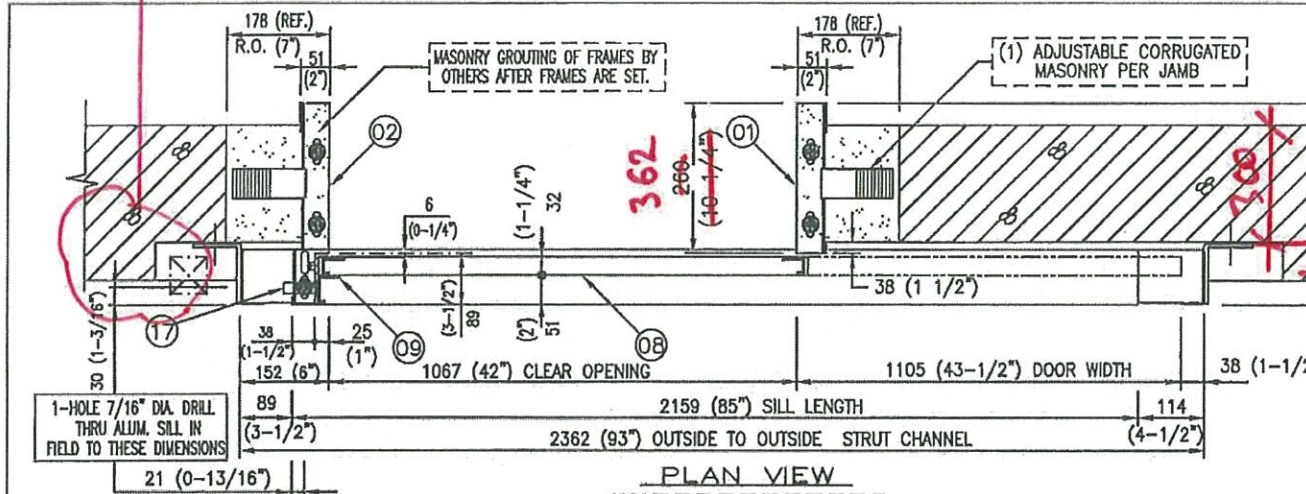
**Teepie Architects**  
 Reviewed  
 Reviewed as noted  
 Revise and resubmit  
 Not Reviewed

This review by Teepie Architects Inc. is for the sole purpose of providing a professional opinion on the general design concept. This review shall not mean that Teepie Architects Inc. approves the details, construction or materials shown on the drawings, nor does it constitute an endorsement of the Contractor's responsibility for meeting the requirements of the Contract Documents. The Contractor is responsible for dimensions to be confirmed and correlated at the construction and installation. For coordination of the work of all trades.

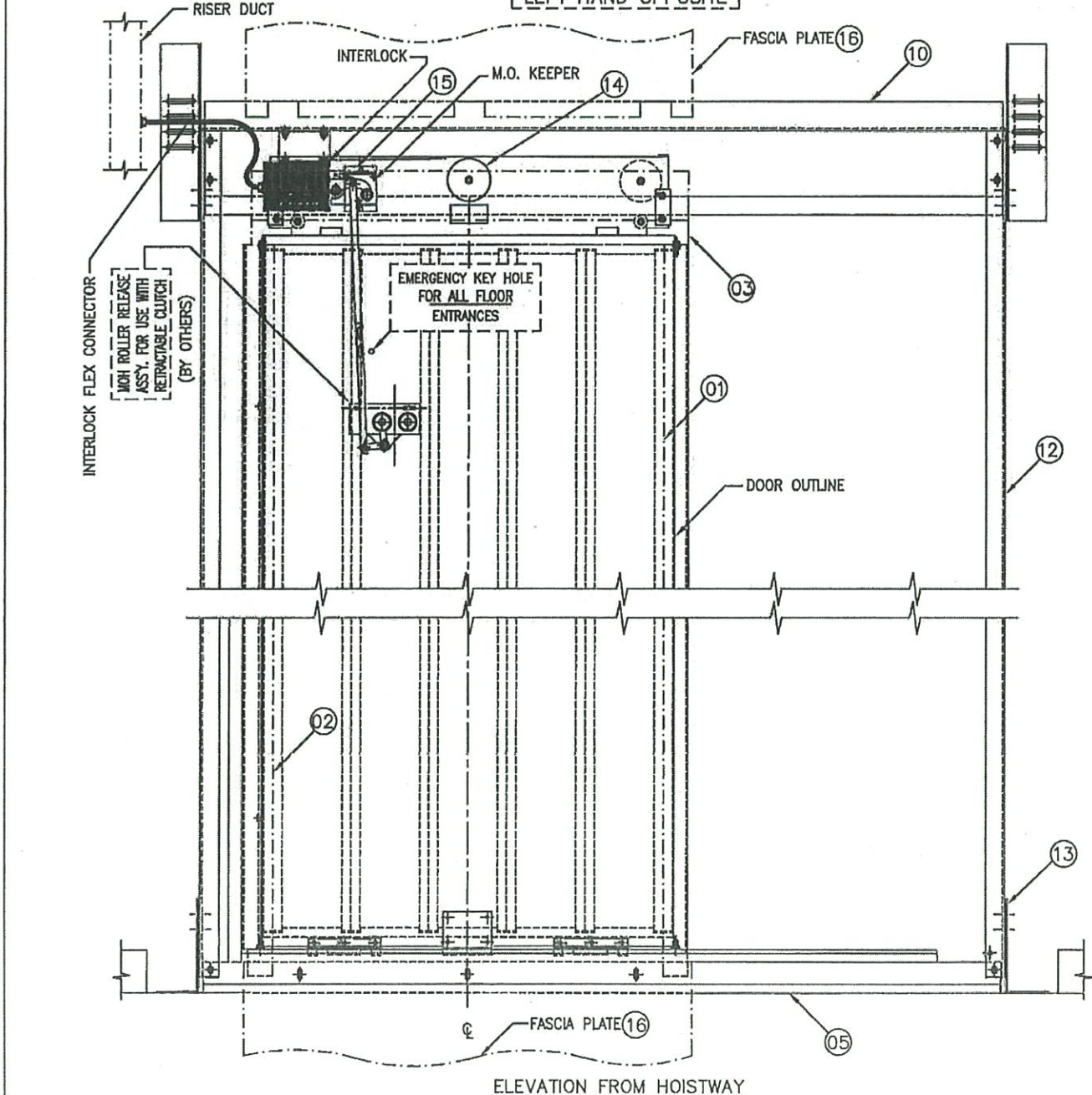
GROUP IDENTIFICATION	
SELCO ELEVATORS LTD.	
PROJECT: SQ ALEXANDRIA PARK, TORONTO ON BLOCK 11, ELEVATORS 1-2-3 FRONT	DATE: 02/28/2015
JOB NAME: HALL ENTRANCE ASSEMBLY-SINGLE SPEED 42"x84" OPNG.	DATE: 02/28/2015
SCALE: 1/4" = 1'-0"	SCALE: 1/4" = 1'-0"
DATE: 02/28/2015	DATE: 02/28/2015
JOB NO: 12646-100	

NO RECESS AT REAR DOORS.

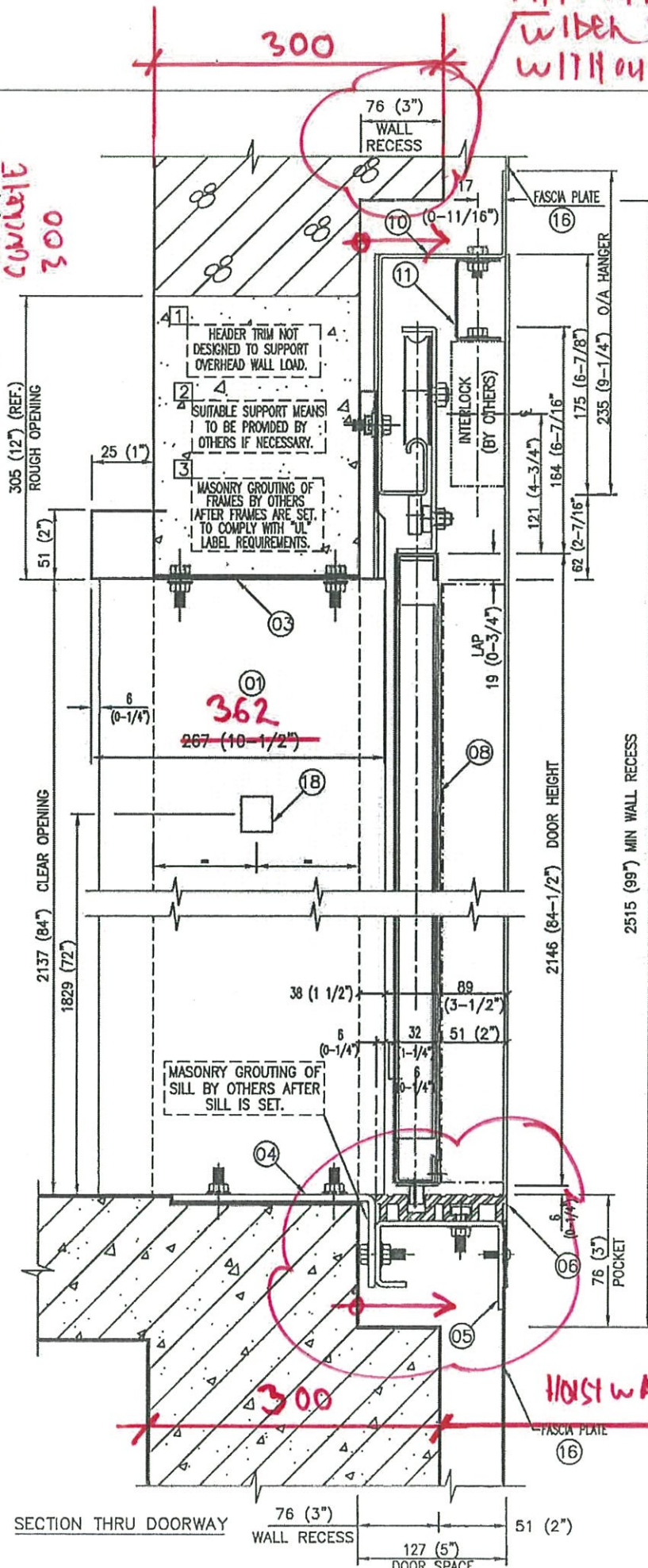
PIT SHAFT FROM P2 TO LEVEL 2 W/S. 70 mm. WIDER TO ACCOMMODATE HOISTWAY DOOR WITHOUT RECESS. SEE ARCHITECTURAL & SELCO SHOPS.



PLAN VIEW  
RIGHT HAND AS SHOWN  
LEFT HAND OPPOSITE



ELEVATION FROM HOISTWAY



SECTION THRU DOORWAY

THIS DWG. NO.	QTY.	PER UNIT	ITEM NO.	DESCRIPTION OR NAME OF PART	IDENTIFICATION NUMBER
003	002	001	01	SLIDE POST	
			02	STRIKE POST	
			03	HEAD TRIM	
			04	SUPPORT ANGLE	
			05	SILL SUPPORT CHANNEL	
			06	SILL --- ALUMINUM	
			07		
			08	HALL DOOR ASSY	
			09	SIGHT GUARD	
			10	HEADER TRACK	
			11	INTERLOCK SUPPORT BRACKET	
			12	STRUT CHANNEL	
			13	FIX ANGLES	
			14	SPIRATOR	
			15	MOUNTING BRACKET FOR INTERLOCK KEEPER	
			16	FASCIA PLATE	
			17	ACCESS KEY SWITCH @ P2 FLOOR	
			18	JAMB PLATE	

- 2 SETS OF LH ENTRANCES REQUIRED FOR ELEVATOR 1 (C.R.S. PRIME POWDER COAT FIN. @ P1 & P2 FLOORS)
  - 2 SETS OF RH ENTRANCES REQUIRED FOR ELEVATOR 2 (C.R.S. PRIME POWDER COAT FIN. @ P1 & P2 FLOORS)
  - 3 SETS OF RH ENTRANCES REQUIRED FOR ELEVATOR 3 (C.R.S. PRIME POWDER COAT FIN. @ 1ST; P1 & P2 FLOORS)
- TRAP TO CONFIRM PAINT AT MOVING ROOM.
- ENTRANCE DRILLED FOR G.A.L. EQUIPMENT.
  - EMERGENCY KEY-HOLE REQUIRED.
  - ENTRANCES ARE ULC LABEL AND FIRE RATED FOR 1 1/2 HOUR.
  - PLEASE CONFIRM 8" BLOCK WALL THICKNESS.
- 300 CAST IN PLACE CONCL. / SHAFT WALL.

HOISTWAY 2070 SEE SELCO SHEET 7 OF 8

GROUP IDENTIFICATION

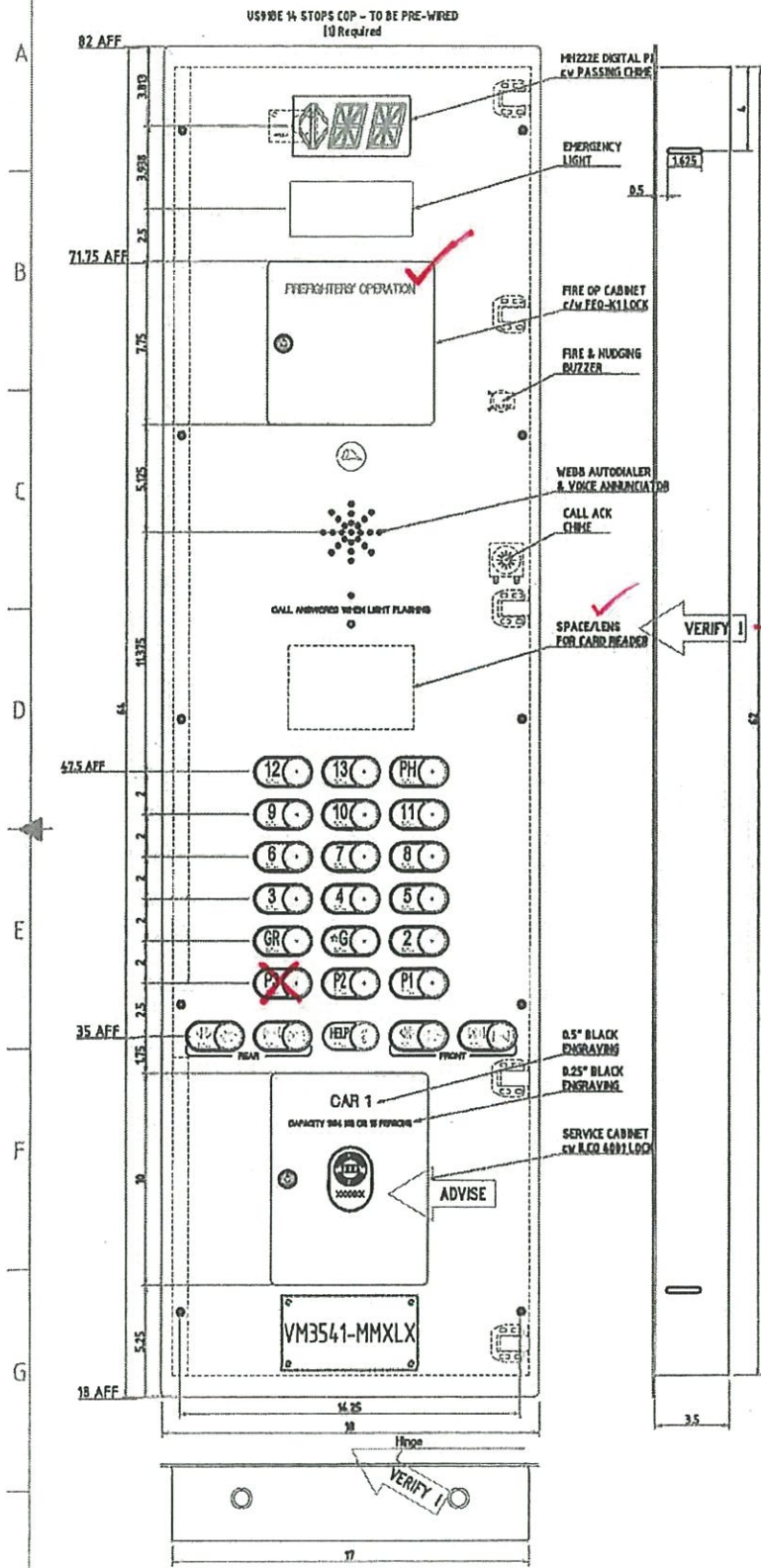
SELCO ELEVATORS LTD.

SQ ALEXANDRIA PARK, TORONTO ON  
BLOCK 11, ELEVATORS 1-2-3 - REAR

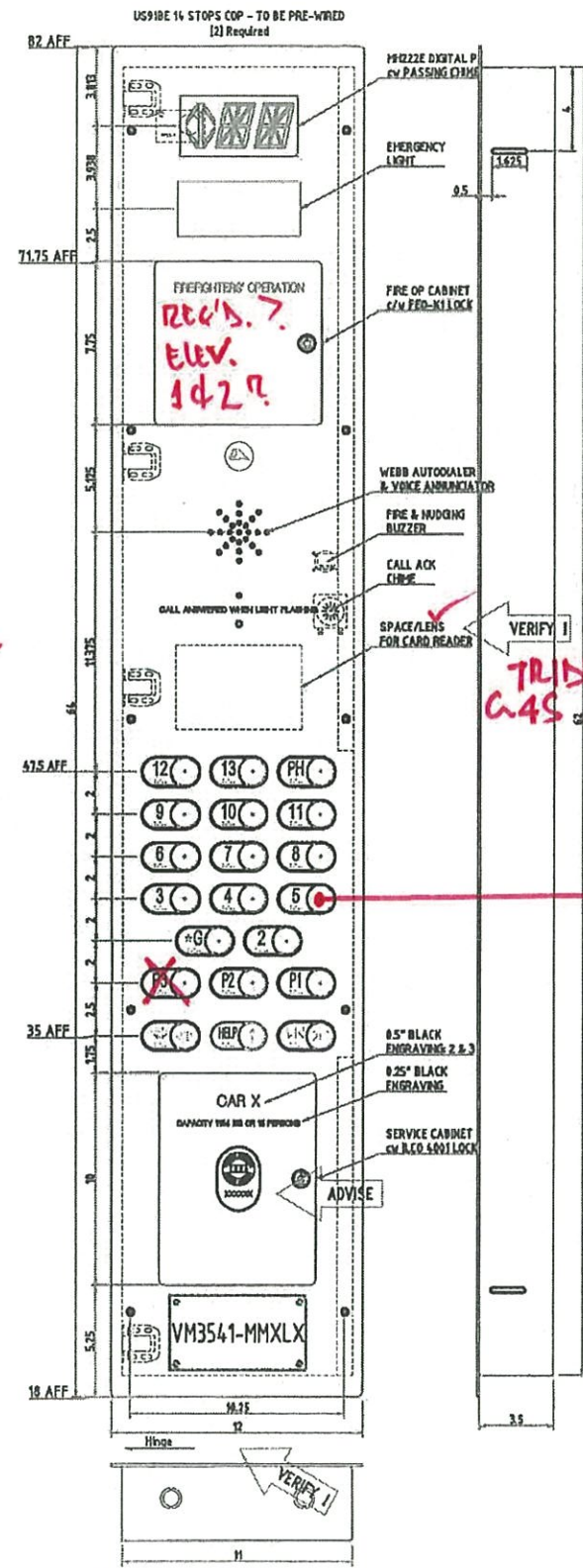
PLT SCALE: 1=8  
DATE: 02/10/2015

HALL ENTRANCE ASSEMBLY-SINGLE SPEED 42"x84" OPNG.

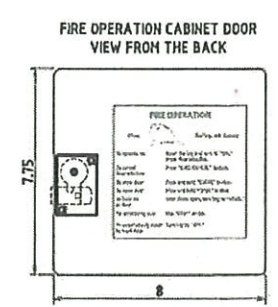
12646-101



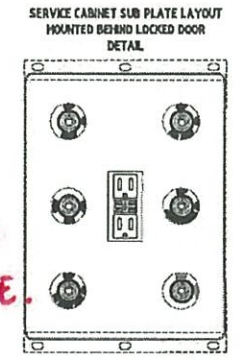
ELEV 3



ELEV. 1, 2.



ELEV 3 IS FIREFIGHTERS



THIBEL / C.45 NOTE

PROVIDE SAMPLE

NO P3

Item ref	Quantity	Title/Name, designation, material, dimension etc	Article No./Reference
<b>CONTROLLER: GAL</b>			
<b>MATERIALS</b>			
Face Plates		12Ga SS #4 Brush Finish, Grain Vertical (unless noted)	
Back Box		16Ga Salt Coat	
<b>PUSHBUTTONS / BRILLE</b>			
Pushbutton Style (COP)		US91E	
Alarm Pushbutton (COP)		N/A	
Call Cancel Pushbutton		US91 C3, RED, IN/O IN/C Non-III - Flush Mount	
Contacts (COP and H/S)		2 W/O for All Buttons UNLESS NOTED	
Button Illumination Type		24V C3 L.E.D.	
D/O, D/C Button Illumination		Non Illuminated, IN/O IN/C	
Phone Button Illumination		Non Illuminated	
Braille Type		TAGM ISATM LEGEND ON BLACK BACKGROUND	
<b>VISUAL INDICATORS</b>			
Fire Hat Indicator		UL91 Indicator, 24V Red LED Illuminated	
<b>AUDIBLE INDICATORS</b>			
Fire, Muting Buzzers		24VAC	
Call Ack. Chime		24VAC	
<b>MISC</b>			
Hinge Side of C.O.P.		RIGHT (CAR 1) & LEFT (CAR 2 & 3)	
Emergency Light		Dupar Complete LED Unit, with Battery	
<b>COMMUNICATIONS</b>			
Auto Dialer		WEBB MWP50 c/v output for voice annunc.	
<b>KEYSWITCHES</b>			
Fire Service Cabinet Lock		FEO-K1 Barrel (Key removable @ 12 O'Clock Only)	
Service Cab Lock		ILCO X4001 Barrel (Key removable @ 12 O'Clock Only)	
Ind Service K/S		US91TXR2C1 (ILCO 4001 Key, 2 Pos. Removable in Both, 2NO, 2NC contacts)	
Light K/S		US91TXR2AB (ILCO 4008 Key, 2 Pos. Removable in Both, 2NO contacts)	
Fan (2 speed) K/S		US91TXR3T1 (ILCO 4001 Key, 3 Pos, Removable in All, 2NO, 2NC contacts)	
Access Enable K/S (COP)		US91TXR2C2 (ILCO 4002 Key, 2 Pos. Removable in Both, 2NO, 2NC contacts)	
Emergency Light Test K/S		US91TXR101 (ILCO 4001 Key, Spring return, 2NO 2NC contacts)	
Run/Stop K/S - In Car Station		US91TXR2C2 (ILCO 4002 Key, 2 Pos. Removable in Both, 2NO, 2NC contacts)	
Run/Stop - In Fire Operation Cab.		2 Positions toggle switch	
Fire Operation K/S		US91TXR2TK1 (FEO-K1, 3 Pos., Trapped in "ON", 2NO, 2NC contacts)	
<b>DIGITAL P.L. &amp; VOICE ANNUNCIATOR</b>			
Car		MH222E-RRR (2 DIGITS, 1 ARROW)	
Voice Annunciator		VH3541-PPDLX (ENGLISH)	
Floor Markings		P2, P1 G, 2-B, PH (P3, P2 & P1 OPEN AT REAR ONLY; CAR1 ONLY REAR OPENING AT FLOOR 10)	
<b>SPECIAL INSTRUCTIONS-CUSTOMER TO PROVIDE WIRING DIAGRAM UPON APPROVAL</b>			

INTERIOR TO CONFIRM

ELEV 3. ONLY?

APPROVAL OF THIS DRAWING IS YOUR ACCEPTANCE THAT ALL DATA CONTAINED THEREIN IS CORRECT. CHANGES REQUIRED AFTER APPROVAL MAY INCUR EXTRA COST.

APPROVED AS NOTED  
 REVISION AS NOTED  
 RESUBMIT DRAWINGS  
 RELEASE FOR FABRICATION  
 NAME (PRINT)

SIGNATURE \_\_\_\_\_  
 DATE \_\_\_\_\_

DESIGNED BY: DM  
 CHECKED BY: \_\_\_\_\_  
 APPROVED BY - date: \_\_\_\_\_  
 CUSTOMER: SELCO  
 DATE: 12/15/14  
 SCALE: 1:1

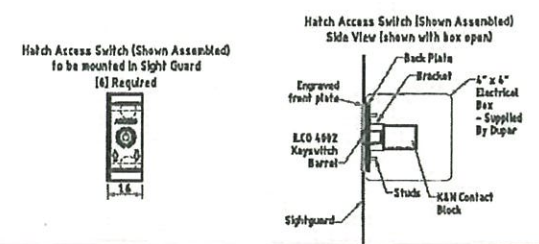
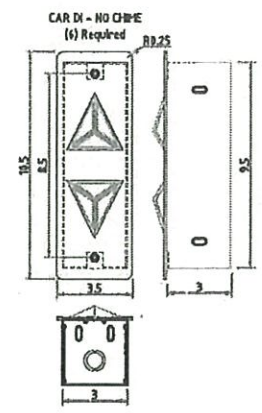
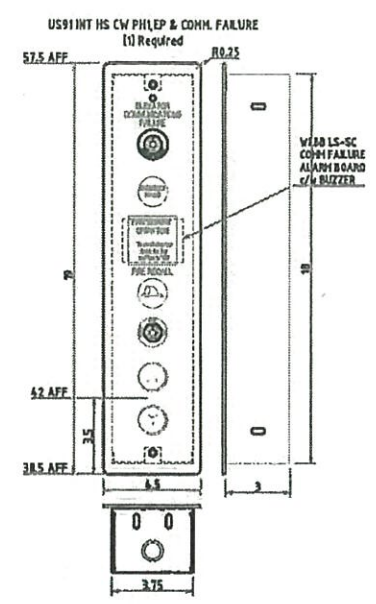
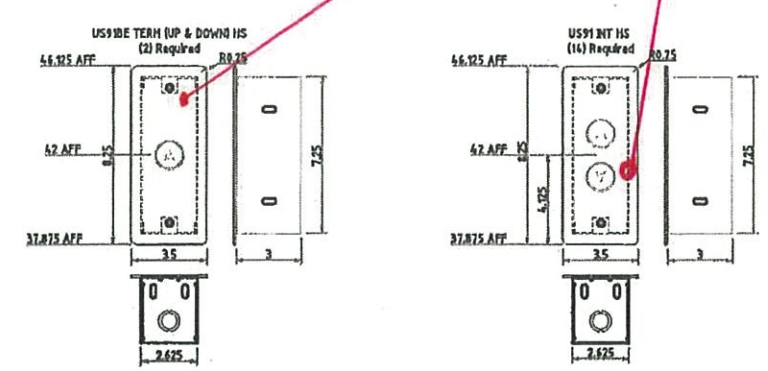
DATE	REV.	DESCRIPTION	DWN.	APPROV.

dupar controls

SQ ALEXANDRIA PARK BLOCK 11 1,2,3  
 D142030A  
 Edition 0  
 Sheet 1/3

RevNo	Revision note	Date	Signature	Checked

A  
B  
C  
D  
E  
F  
G  
H



**Teepie Architects INC.**

Reviewed as noted

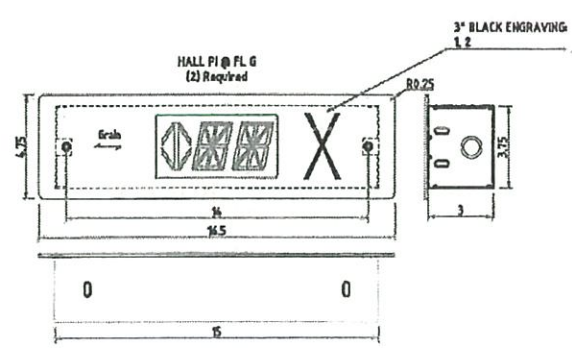
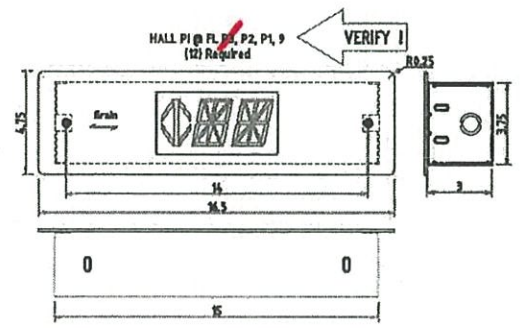
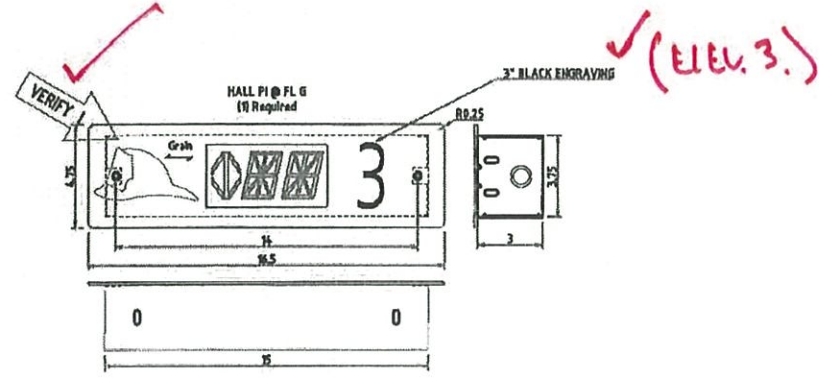
Revise and resubmit

Not Reviewed

Date: 2015-07-23

Reviewed by:

This review by Teepie Architects Inc. is for the sole purpose of ascertaining conformance with the general design concept. This review shall not mean that Teepie Architects Inc. approves the detailed design inherent in the shop drawings, responsibility for which shall remain with the Contractor submitting same, and such review shall not relieve the Contractor of the responsibility for errors or omissions in the shop drawings or of the responsibility for meeting all requirements of the Contract Documents. The Contractor is responsible for dimensions to be confirmed and correlated at the job site, for information that pertains solely to fabrication processes or to techniques of construction and installation, and for coordination of the work of all trades.



VERIFY I

CONTROLLER: GAL	
MATERIALS	
Face Plates	12Ga SS #4 Brush Finish, Grain Vertical (unless noted)
Back Box	16Ga Satin Coat
PUSHBUTTONS	
Pushbutton Style	US91BE
Contacts	2 N/O C3 for All Buttons
Button Illumination Type	24V C3 L.E.D.
VISUAL INDICATORS	
Fire Hat Indicator	UL91 Indicator, 24V Red LED Illuminated
Emergency Power Indicator	UL91 Indicator, 24V Red LED Illuminated
Direction Arrows	2.625" c/v 24V RED (down) & GREEN (up) LED Boards
AUDIBLE INDICATORS	
Car Lantern Chime	N/A
KEYSWITCHES	
Access K/S (Hall)	ILCO key 4002, Double Spring Return, K&N CD2508
Fire Recall K/S	US91STR2K1 (FEO-K1, 3 Pos., Trapped in "RESET", 2NO, 2NC contacts)
Alarm Reset K/S	US91STR01 (ILCO 4001 Key, Spring return, 1NO 1NC contacts)
DIGITAL P.I.	
Hall	MHZ22-RRR (ARROW, 2 DIGITS)

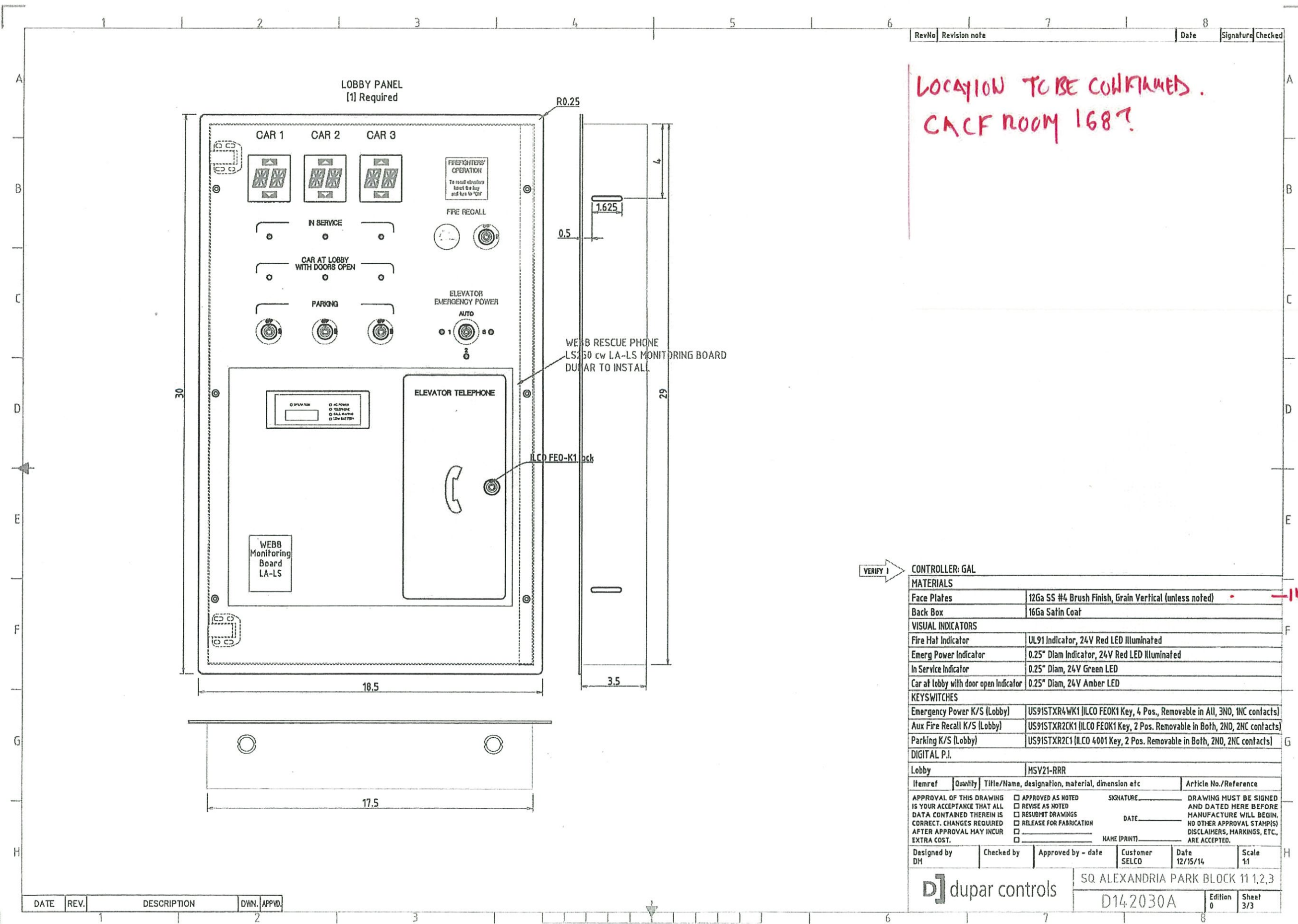
INTERIORS?

ELLV.3

Itemref	Quantity	Title/Name, designation, material, dimension etc	Article No./Reference
APPROVAL OF THIS DRAWING IS YOUR ACCEPTANCE THAT ALL DATA CONTAINED THEREIN IS CORRECT. CHANGES REQUIRED AFTER APPROVAL MAY INCUR EXTRA COST.		<input type="checkbox"/> APPROVED AS NOTED <input type="checkbox"/> REVISE AS NOTED <input type="checkbox"/> RESUBMIT DRAWINGS <input type="checkbox"/> RELEASE FOR FABRICATION <input type="checkbox"/> NAME (PRINT)	DRAWING MUST BE SIGNED AND DATED HERE BEFORE MANUFACTURE WILL BEGIN. NO OTHER APPROVAL STAMP(S) DISCLAIMERS, MARKINGS, ETC. ARE ACCEPTED.

Designed by DM	Checked by	Approved by - date	Customer SELCO	Date 12/15/14	Scale 1:1
			SQ ALEXANDRIA PARK BLOCK 11 1,2,3 D142030A Edition 0 Sheet 2/3		

DATE	REV.	DESCRIPTION	DWN.	APPVD.



LOCATION TO BE CONFIRMED.  
CACF ROOM 168?

VERIFY I

<b>CONTROLLER: GAL</b>			
<b>MATERIALS</b>			
Face Plates	12Ga SS #4 Brush Finish, Grain Vertical (unless noted)		
Back Box	16Ga Saffin Coat		
<b>VISUAL INDICATORS</b>			
Fire Hal Indicator	UL91 Indicator, 24V Red LED Illuminated		
Emerg Power Indicator	0.25" Diam Indicator, 24V Red LED Illuminated		
In Service Indicator	0.25" Diam, 24V Green LED		
Car at lobby with door open indicator	0.25" Diam, 24V Amber LED		
<b>KEYSWITCHES</b>			
Emergency Power K/S (Lobby)	US91STXR4WK1 (ILCO FE0K1 Key, 4 Pos., Removable in All, 3NO, 1NC contacts)		
Aux Fire Recall K/S (Lobby)	US91STXR2CK1 (ILCO FE0K1 Key, 2 Pos. Removable in Both, 2NO, 2NC contacts)		
Parking K/S (Lobby)	US91STXR2C1 (ILCO 4001 Key, 2 Pos. Removable in Both, 2NO, 2NC contacts)		
<b>DIGITAL P.I.</b>			
Lobby	MSV21-RRR		
Itemref	Quantity	Title/Name, designation, material, dimension etc	Article No./Reference
APPROVAL OF THIS DRAWING IS YOUR ACCEPTANCE THAT ALL DATA CONTAINED THEREIN IS CORRECT. CHANGES REQUIRED AFTER APPROVAL MAY INCUR EXTRA COST.		<input type="checkbox"/> APPROVED AS NOTED <input type="checkbox"/> REVISE AS NOTED <input type="checkbox"/> RESUBMIT DRAWINGS <input type="checkbox"/> RELEASE FOR FABRICATION <input type="checkbox"/> _____ NAME (PRINT)	SIGNATURE _____ DATE _____ DRAWING MUST BE SIGNED AND DATED HERE BEFORE MANUFACTURE WILL BEGIN. NO OTHER APPROVAL STAMP(S) DISCLAIMERS, MARKINGS, ETC. ARE ACCEPTED.
Designed by DH	Checked by	Approved by - date	Customer SELCO
			Date 12/15/14
Scale 1:1		SQ ALEXANDRIA PARK BLOCK 11 1,2,3	
D] dupar controls		D142030A	Edition 0
			Sheet 3/3

INTENTIONS

DATE	REV.	DESCRIPTION	DWN.	APPVD.



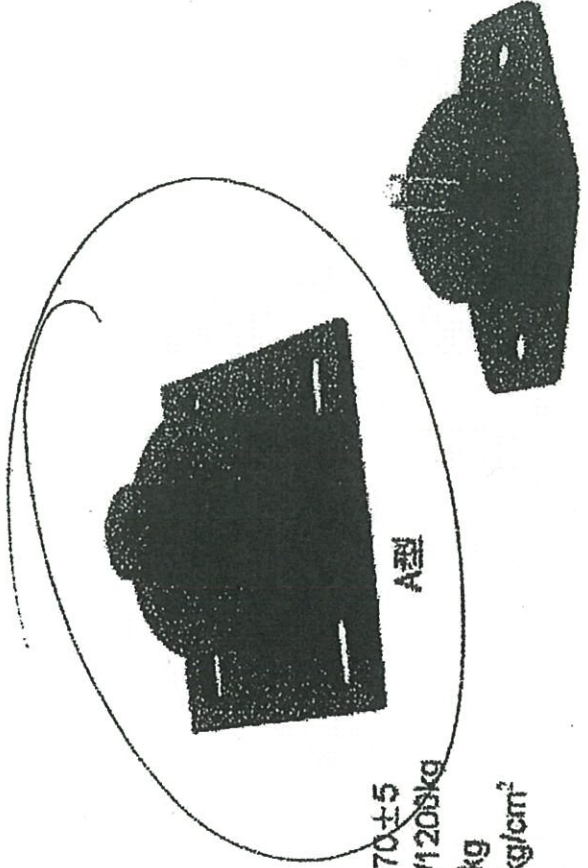




# 减震垫

Absorber

硬度 Shore 70±5  
 变形量 2mm/1200kg  
 极限载荷 6000kg  
 粘合力 Agglutinated Power: ≥25kg/cm<sup>2</sup>



A型

B型



A型防震垫

B型防震垫

