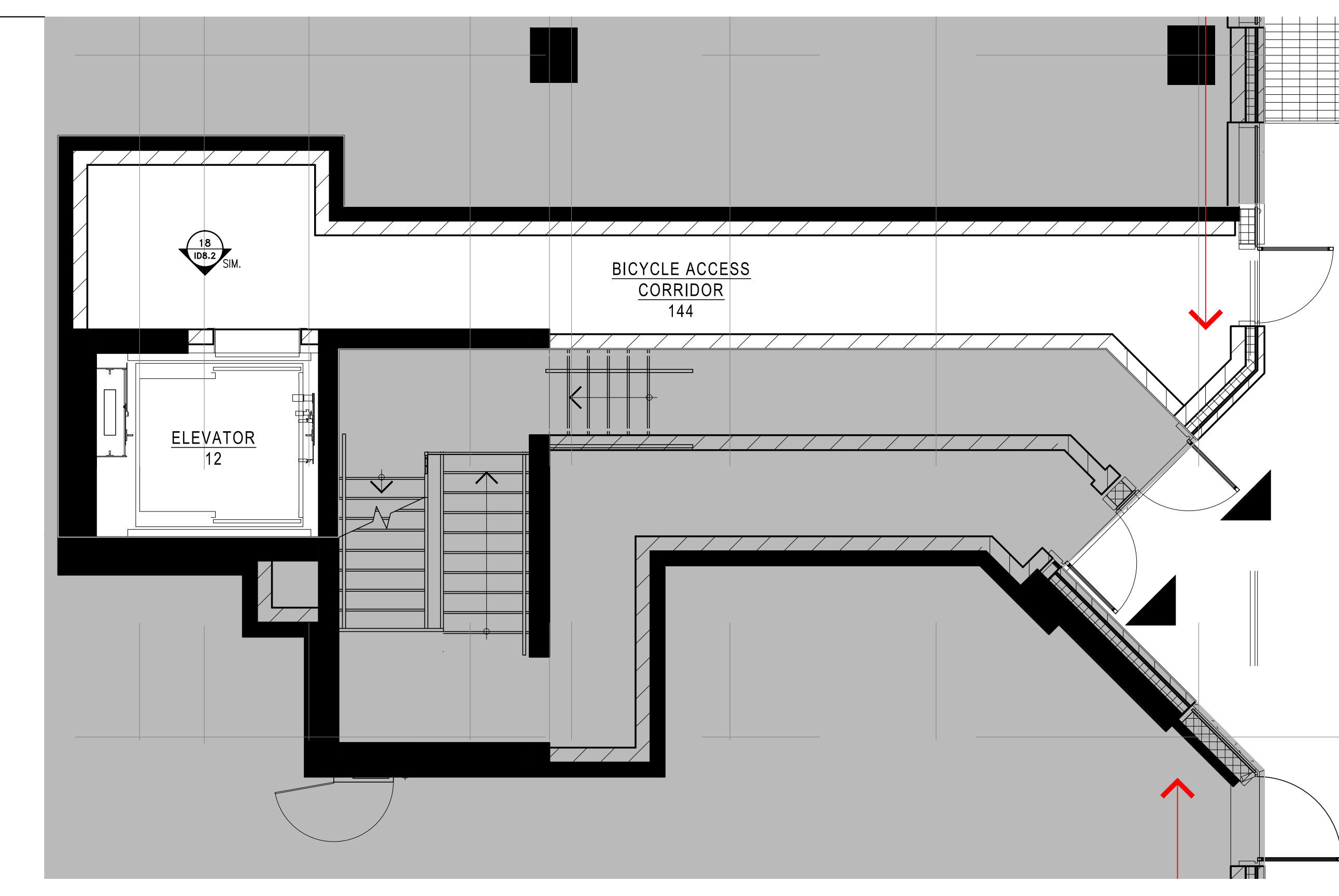


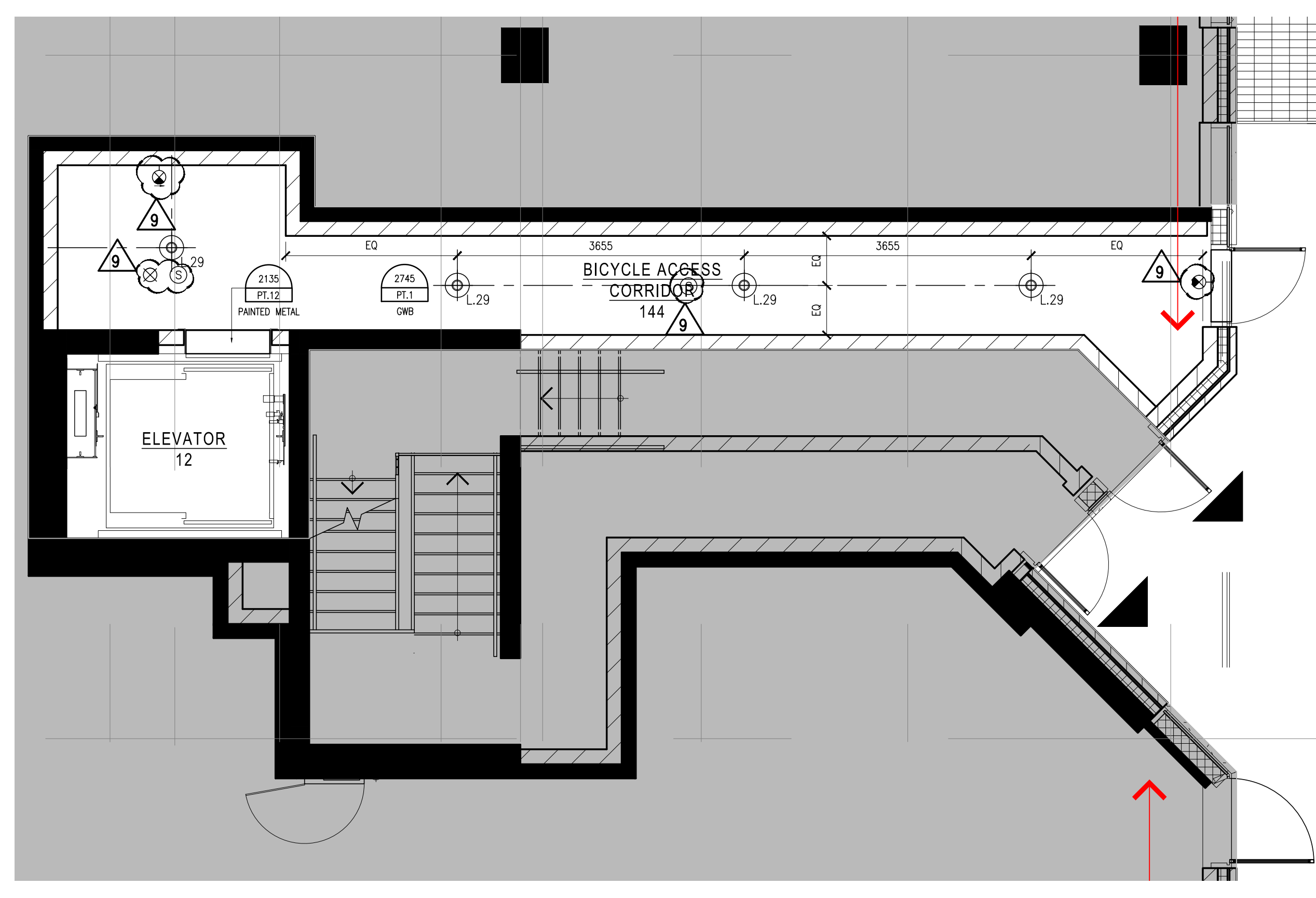
Note:
 1. CONTRACTOR AND ALL SUB-TRADES SHALL VERIFY ALL SITE DIMENSIONS, ALL DRAWINGS, DETAILS AND SPECIFICATIONS AND REPORT ANY DISCREPANCIES TO THE INTERIOR DESIGNERS IN WRITING FOR APPROVAL BEFORE PROCEEDING WITH THE WORK.
 2. CONTRACTOR AND SUB-CONTRACTORS, BEFORE PROCEEDING WITH WORK, MUST SUBMIT ALL NECESSARY SAMPLES FOR APPROVAL OF QUALITY AND FINISH TO THE INTERIOR DESIGNER.
 3. CONTRACTOR MUST COMPLY WITH THE CONTRACT DOCUMENTS, PERFORMANCE REQUIREMENTS, APPLICABLE CODES AND REGULATIONS.
 4. ALL DRAWINGS AND WRITTEN MATERIAL HEREIN CONSTITUTE THE ORIGINAL AND UNPUBLISHED WORK OF "I BY IV DESIGN ASSOCIATES INC." AND MAY NOT BE DUPLICATED, USED OR DISCLOSED WITHOUT PRIOR WRITTEN CONSENT OF "I BY IV DESIGN ASSOCIATES INC."
 5. DRAWINGS NOT TO BE SCALED

Issue:

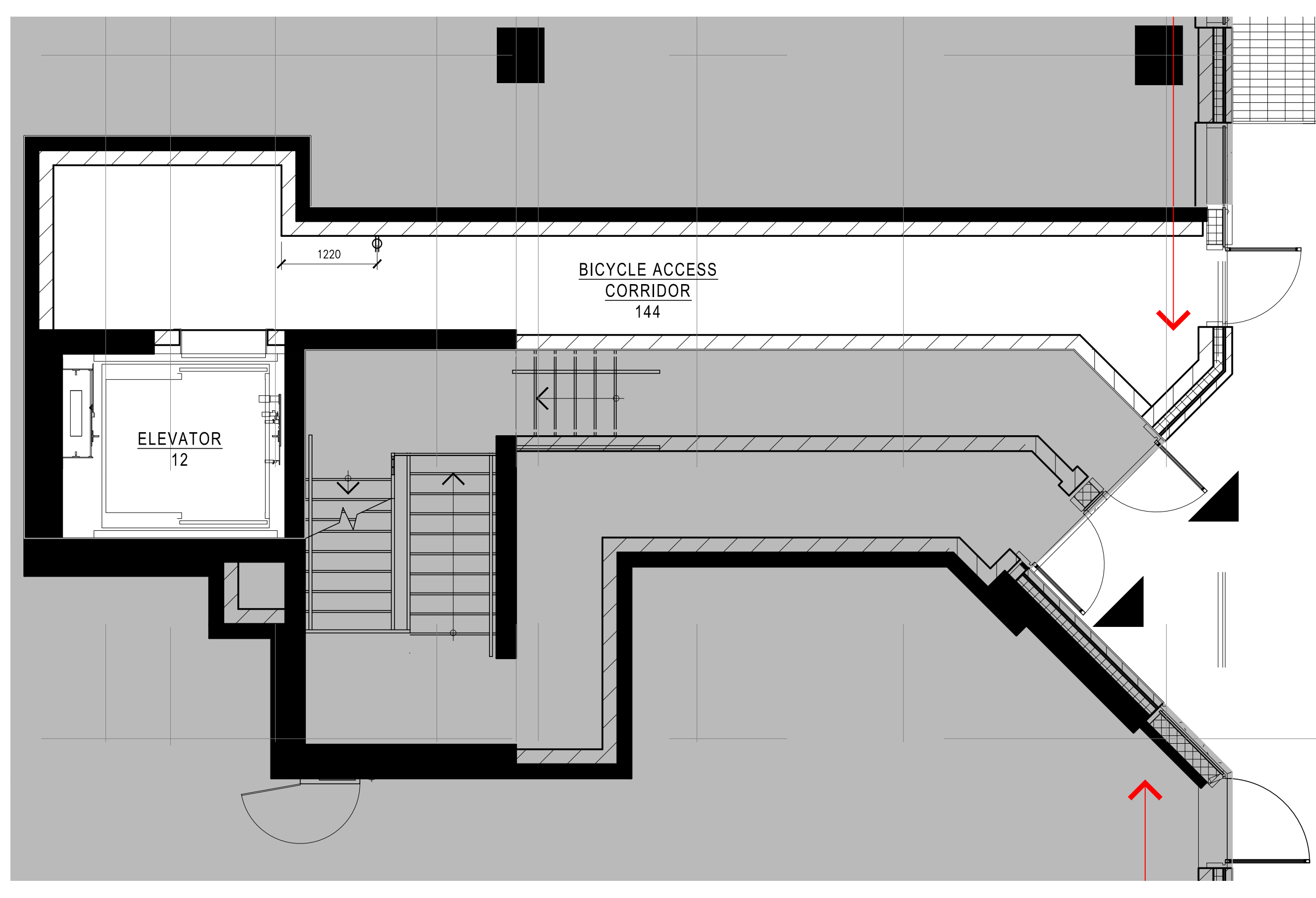
08 ISSUED FOR ADDENDUM	16.09.20
09 ISSUED FOR ADDENDUM	17.01.27



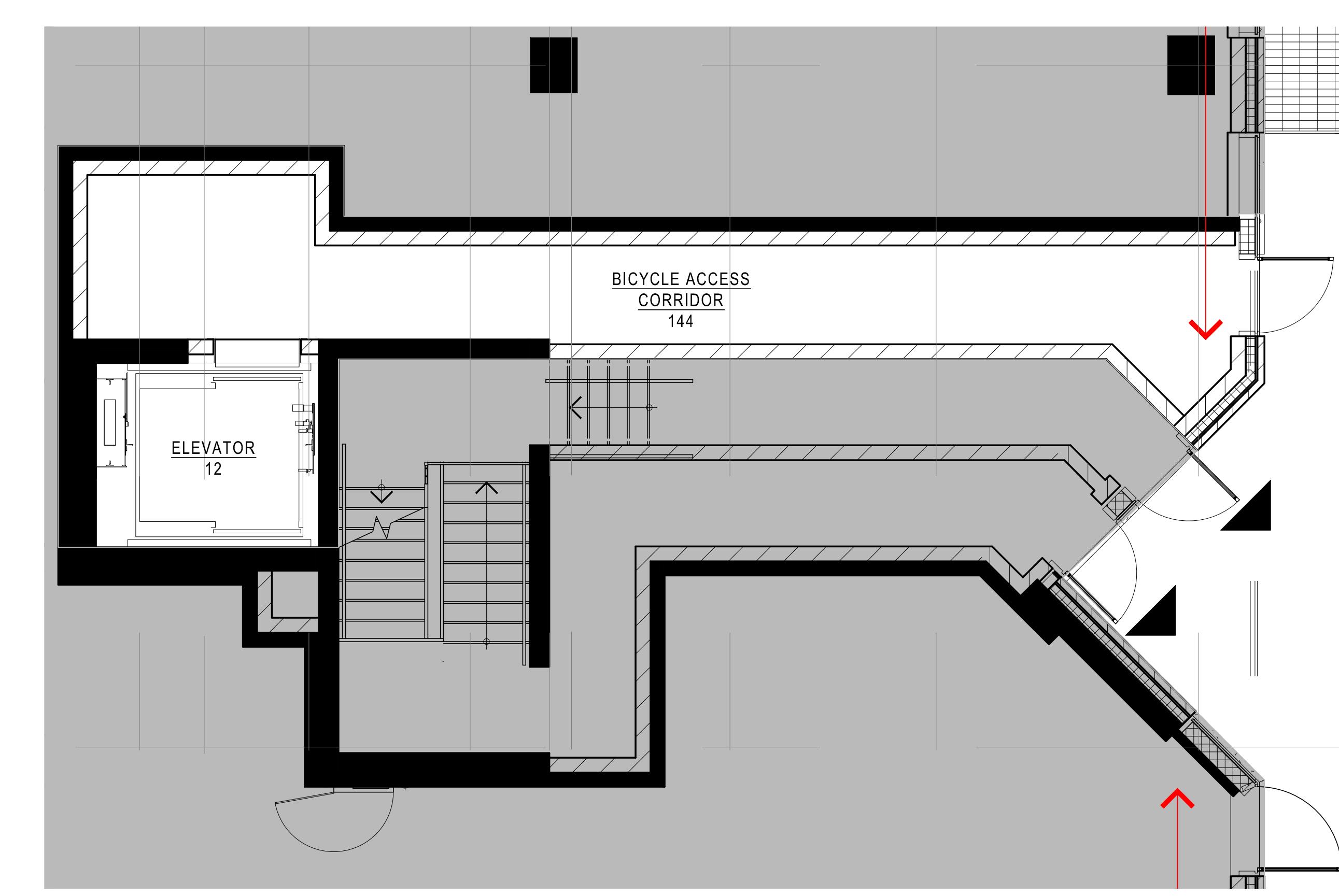
1 CONSTRUCTION PLAN
 02.3 SCALE 1:150



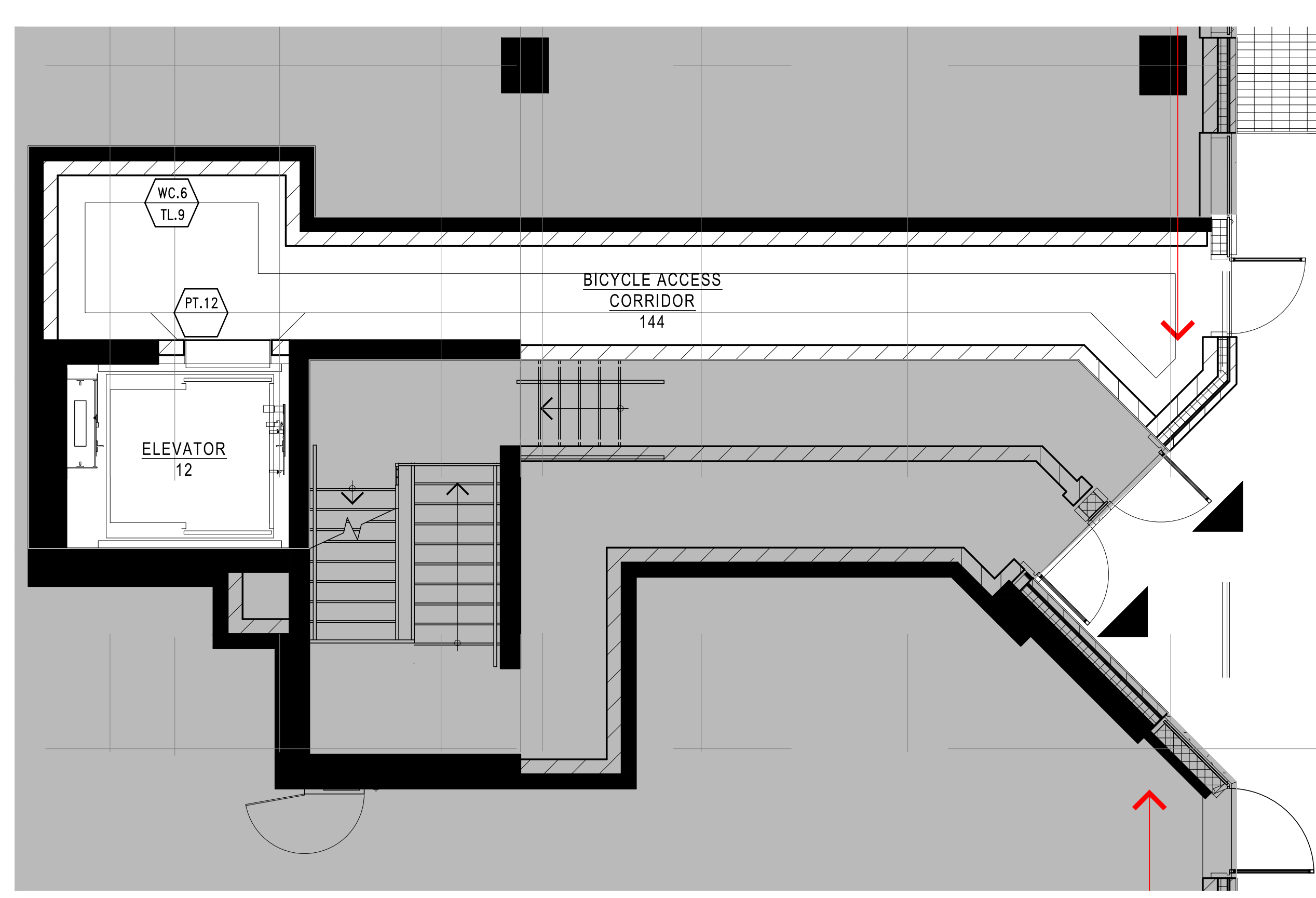
2 REFLECTED CEILING PLAN
 02.3 SCALE 1:150



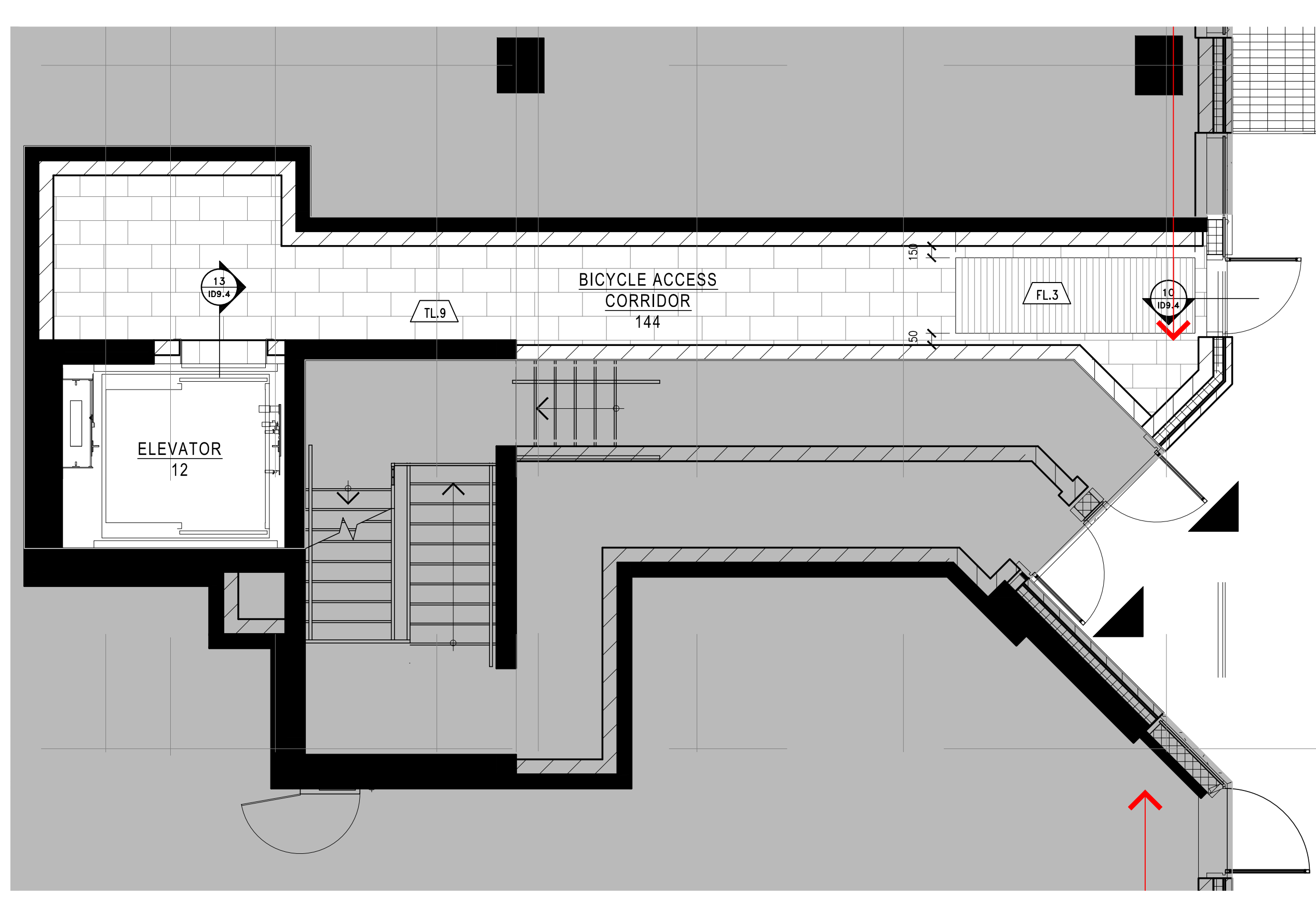
3 POWER AND COMMUNICATION PLAN
 02.3 SCALE 1:150



4 FIXTURE PLAN
 02.3 SCALE 1:150



5 WALL FINISH PLAN
 02.3 SCALE 1:150



6 FLOOR FINISH PLAN
 02.3 SCALE 1:150

Hines TRIDEL

AQUAVISTA
 AT BAYSIDE TORONTO
 1 EDGEWATER DRIVE, TORONTO ONTARIO

77 NEWAY AVENUE, SUITE 109
 TORONTO, ONTARIO M9K 3E3 - CANADA
 T + 1 416 531 2224
 12 DEBORAH'S STREET
 NEW YORK, NEW YORK 10013 - USA
 T + 1 212 392 4962

Drawing Title:
**LEVEL 1
 BICYCLE ACCESS
 CORRIDOR PLANS**

Our Project Number:
 14008
 Designed By: DM.KR.VW.SG
 Detailed By: DM.KR.VW.SG.BP
 Drawing Number:

ID2.6A

