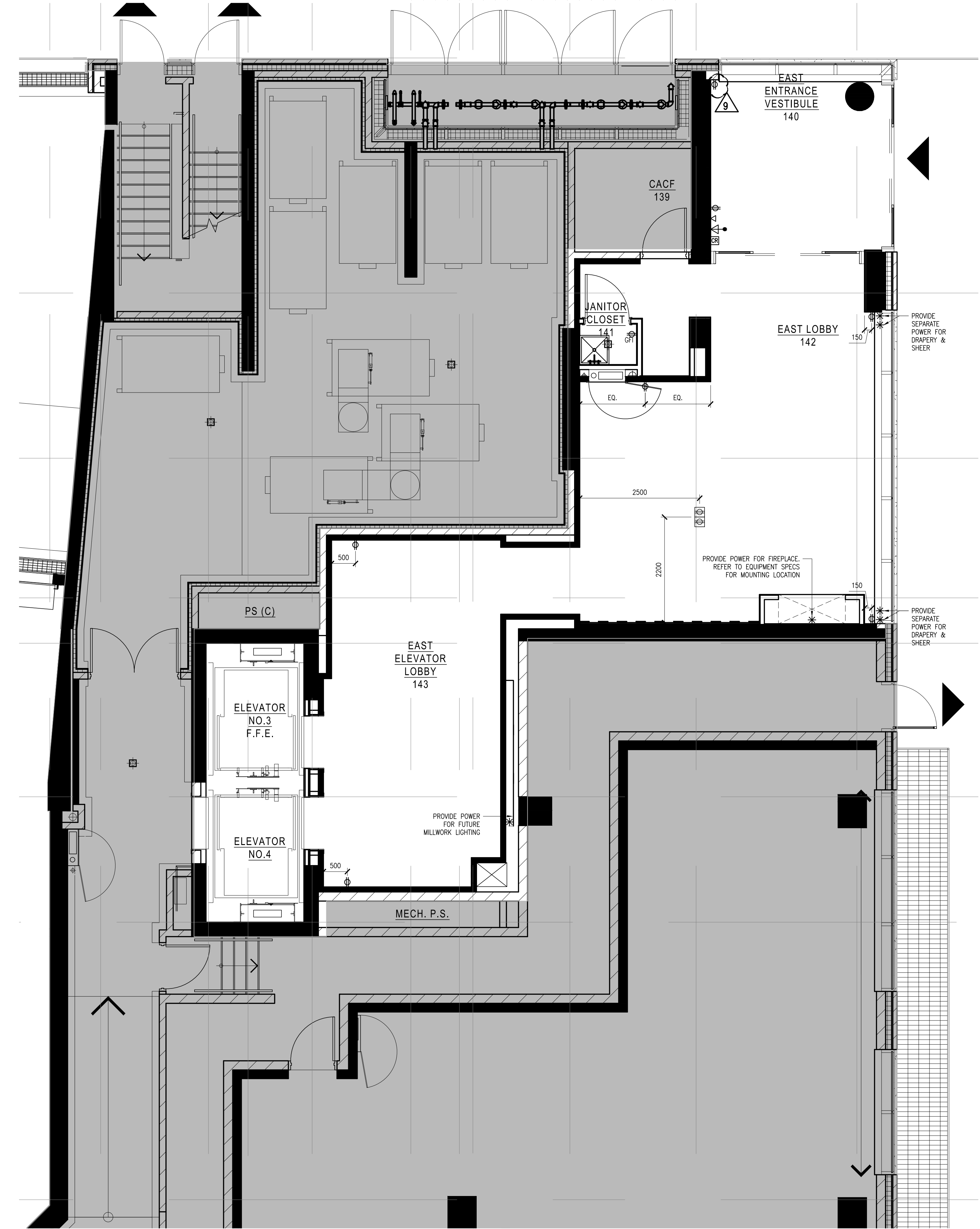


1 POWER AND COMMUNICATION PLAN  
SCALE: 1:150



2 POWER AND COMMUNICATION PLAN  
SCALE: 1:150

SYMBOL	DESCRIPTION	QTY
⊕	120 VOLTS DUPLEX OUTLET TO BE WALL MOUNTED @ 12" A.F.F. O.C. UNLESS OTHERWISE NOTED	-
⊕ GFI	120 VOLTS DUPLEX OUTLET W/ GROUND FAULT INTERRUPTER TO BE WALL MOUNTED @ 12" A.F.F. O.C. UNLESS OTHERWISE NOTED	-
⊕	TELEPHONE OUTLET TO BE WALL MOUNTED AS NOTED (E.G. (CAT3 VOICE))	-
⊕	DATA OUTLET TO BE WALL MOUNTED (CAT5 DATA)	-
⊕	VOICE/DATA OUTLET TO BE WALL MOUNTED	-
⊕	DEDICATED OUTLET FOR COMPUTER TO BE WALL MOUNTED @ 12" A.F.F. O.C. UNLESS OTHERWISE NOTED	-
⊕	FLOOR MOUNTED DEDICATED OUTLET @ CASH AREA FOR COMPUTER	-
⊕	FLOOR MOUNTED DUPLEX OUTLET	-
⊕	FLOOR MOUNTED DATA OUTLET @ CASH AREA (CAT5 DATA)	-
⊕	FLOOR MOUNTED DATA OUTLET @ CASH AREA (CAT5 DATA)	-
⊕	FLOOR MOUNTED VOICE/DATA OUTLET	-
*	POWER REQUIRED	-
⊕	SPEAKER - WIRE TO OFFICE STEREO UNIT	-
⊕	EXISTING DUPLEX OUTLETS AND POWER TO REMAIN	-
⊕	CABLE TELEVISION OUTLET	-
⊕	AUTOMATIC DOOR OPERATOR PUSH PLATE/BUTTON MOUNTED AT 1050mm	-
⊕	DUSS HEAD	-
⊕	INTERCOM MOUNTED AT 1050mm	-
⊕	ELECTRIC STRIKE	-
⊕	DUSS ALERT PUSH PLATE/BUTTON MOUNTED AT 1050mm	-
⊕	KEYPAD MOUNTED MOUNTED AT 1050mm	-

- POWER AND COMMUNICATION NOTES**
- POWER AND COMMUNICATION DRAWINGS TO BE USED FOR LOCATION PURPOSES ONLY. REFER TO ELECTRICAL ENGINEERING DRAWINGS FOR DETAILS, SPECIFICATIONS AND REQUIREMENTS.
  - ELECTRICAL AND COMMUNICATION WORK TO COMPLY WITH THE REQUIREMENTS OF THE BUILDING LAWS AND APPLICABLE WIRING JURISDICTION.
  - CONTRACTOR TO REPORT DISCREPANCIES BETWEEN ENGINEERING AND DESIGN DRAWINGS TO THE DESIGNER AND ELECTRICAL ENGINEER PRIOR TO COMMENCEMENT OF WORK.
  - SUBMIT REQUIRED CHANGES TO THE DESIGNER FOR APPROVAL PRIOR TO COMMENCEMENT OF WORK.
  - DIMENSIONS OF SERVICES ARE TAKEN AT THE CENTRE OF THE SERVICE OR GROUP OF SERVICES, UNLESS OTHERWISE NOTED.
  - DIMENSIONS FROM A PARTITION ARE TAKEN FROM FACE OF PARTITION TO CENTRE OF THE SERVICE OR GROUP OF SERVICES, UNLESS OTHERWISE NOTED.
  - DIMENSIONS FROM THE PERIMETER OF THE BUILDING ARE TAKEN FROM FACE OF THE CONNECTION OR BMS BUILDING ELEMENT TO CENTRE OF THE SERVICE OR GROUP OF SERVICES, UNLESS OTHERWISE NOTED.
  - REFER TO ENGINEERING DRAWINGS FOR SPECIFICATION OF COVER PLATE, RECEPTACLE TYPE AND COLOUR. REFER TO DESIGNER DRAWINGS FOR MOUNTING HEIGHT.
  - WHERE POWER AND COMMUNICATION SERVICES ARE ADJACENT ON PLAN, GANGED COVER PLATES WILL BE USED.
  - CONTRACTOR TO ENSURE THAT TRACES HAVE COMPLETED THEIR PORTION OF THE WORK BEFORE BOARDING UP BOTH SIDES OF THE STUDS. THIS IS TO INCLUDE INSPECTORS AS REQUIRED BY LOCAL AND PROVINCIAL BY-LAW AND BUILDING CODES.
  - SOUND BATTIS IN PARTITIONS ARE TO CONTINUE BEHIND POWER AND TELEPHONE OUTLETS WITHOUT INTERRUPTION.
  - STAGGER OUTLETS OCCURRING ON OPPOSITE SIDES OF THE SAME PARTITION TO MAINTAIN ACOUSTIC INTEGRITY.
  - FURNITURE SYSTEM FEEDS TO BE SUPPLIED BY SYSTEM FURNITURE MANUFACTURER AND ELECTRICAL CONNECTION OF SYSTEMS FURNITURE BY ELECTRICAL CONTRACTOR.
  - CONTRACTOR TO SUPPLY METAL CONDUIT AND KEYSH BUSHES ACCESS CONTROL EQUIPMENT INCLUDING THE SUPPLY AND INSTALLATION OF BOXES, CONDUITS, WIRING AND CABLES AS PER SECURITY CONSULTANT'S SPECIFICATIONS AND DETAILS.
  - TYPICAL WALL OUTLETS TO BE MOUNTED AT 12" A.F.F.
  - REFER TO MECHANICAL & ELECTRICAL ENGINEER'S DRAWINGS FOR SPECIFICATIONS.
  - ALL POWER SHOWN ON THIS PLAN TO BE COORDINATED AND APPROVED BY CLIENT PRIOR TO INSTALLATION AND FABRICATION OF ANY MILLWORK WITH POWER REQUIREMENTS.
  - CONTRACTOR SHALL CONFIRM ALL QUANTITIES PRIOR TO ORDERING.
  - CONTRACTOR IS RESPONSIBLE FOR:
    - DISCONNECTING ALL LIGHTING, COMPUTERS, DATA LINES, PHONE LINES, ELECTRICAL FITTURES, ETC.
    - REMOVAL AND RELOCATION OF EXISTING ELECTRICAL AS REQUIRED.
    - REWORKING ALL EXISTING TLM WIRE STRUCTURE UNDER EXISTING FLOORCOVERING IF REQUIRED.
  - CLIENT IS RESPONSIBLE FOR ALL POS AND DEBT WRING.
  - THE ELECTRICAL CONTRACTOR MUST USE THE SIZE AND SD TO TAKE OFF ON QUANTITY AND MATERIALS REQUIRED BEFORE STARTING PROJECT. ALL EXISTING LIGHTING AND ELECTRICAL REFS ARE TO BE CONFIRMED ON SITE AND DESIGNER NOTIFIED IF THERE ARE ANY DISCREPANCIES.

**Notes:**

- CONTRACTOR AND ALL SUB-TRADES SHALL VERIFY ALL SITE DIMENSIONS. ALL DRAWINGS, DETAILS AND SPECIFICATIONS TO BE USED FOR LOCATION PURPOSES ONLY. REFER TO THE INTERIOR DESIGNER IN WRITING FOR APPROVAL BEFORE PROCEEDING WITH THE WORK.
- CONTRACTOR AND SUB-CONTRACTORS, BEFORE PROCEEDING WITH WORK, MUST SUBMIT ALL NECESSARY SAMPLES FOR APPROVAL OF QUALITY AND FINISH TO THE INTERIOR DESIGNER.
- CONTRACTOR MUST COMPLY WITH THE CONTRACT DOCUMENTS, PERFORMANCE REQUIREMENTS, APPLICABLE CODES AND REGULATIONS.
- ALL DRAWINGS AND WRITTEN MATERIAL HEREIN CONSTITUTE THE ORIGINAL AND UNPUBLISHED WORK OF "18 BY 18 DESIGN ASSOCIATES INC." AND MAY NOT BE DUPLICATED, USED OR DISCLOSED WITHOUT PRIOR WRITTEN CONSENT OF "18 BY 18 DESIGN ASSOCIATES INC."
- DRAWINGS NOT TO BE SCALED.

**Issue:**

05 ISSUED FOR COORDINATION	16.01.11
06 ISSUED FOR CLIENT REVIEW	16.01.15
07 ISSUED FOR TENDER	16.03.18
08 ISSUED FOR ADDENDUM	17.01.27