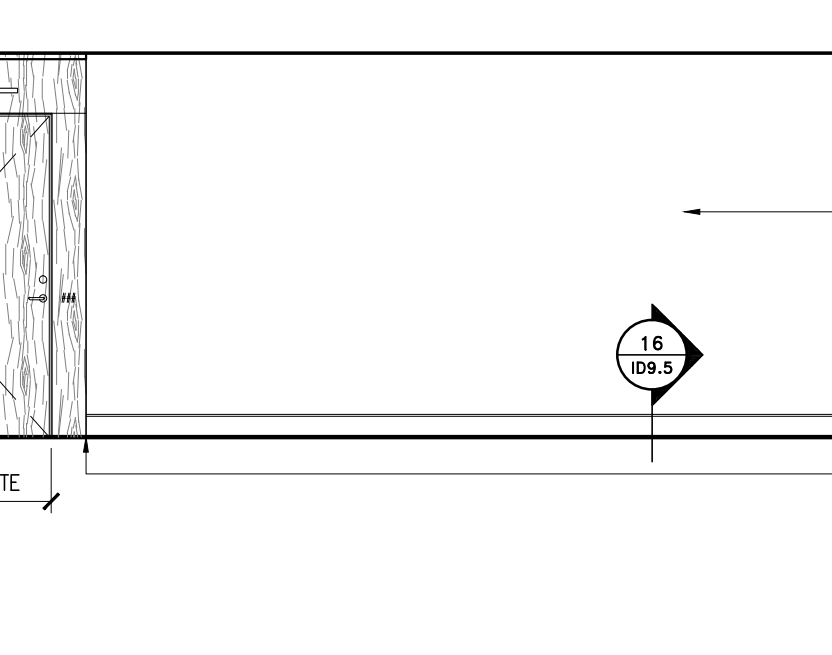
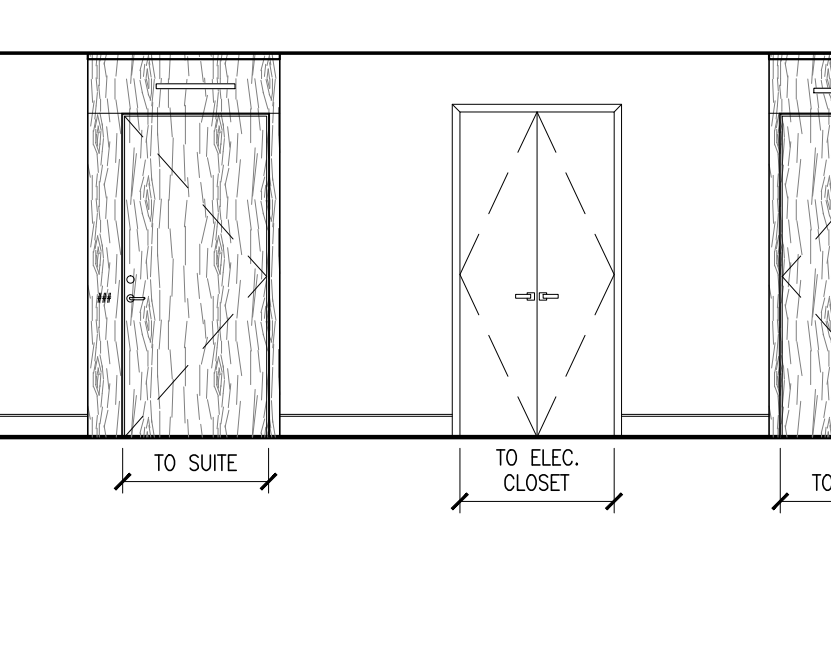
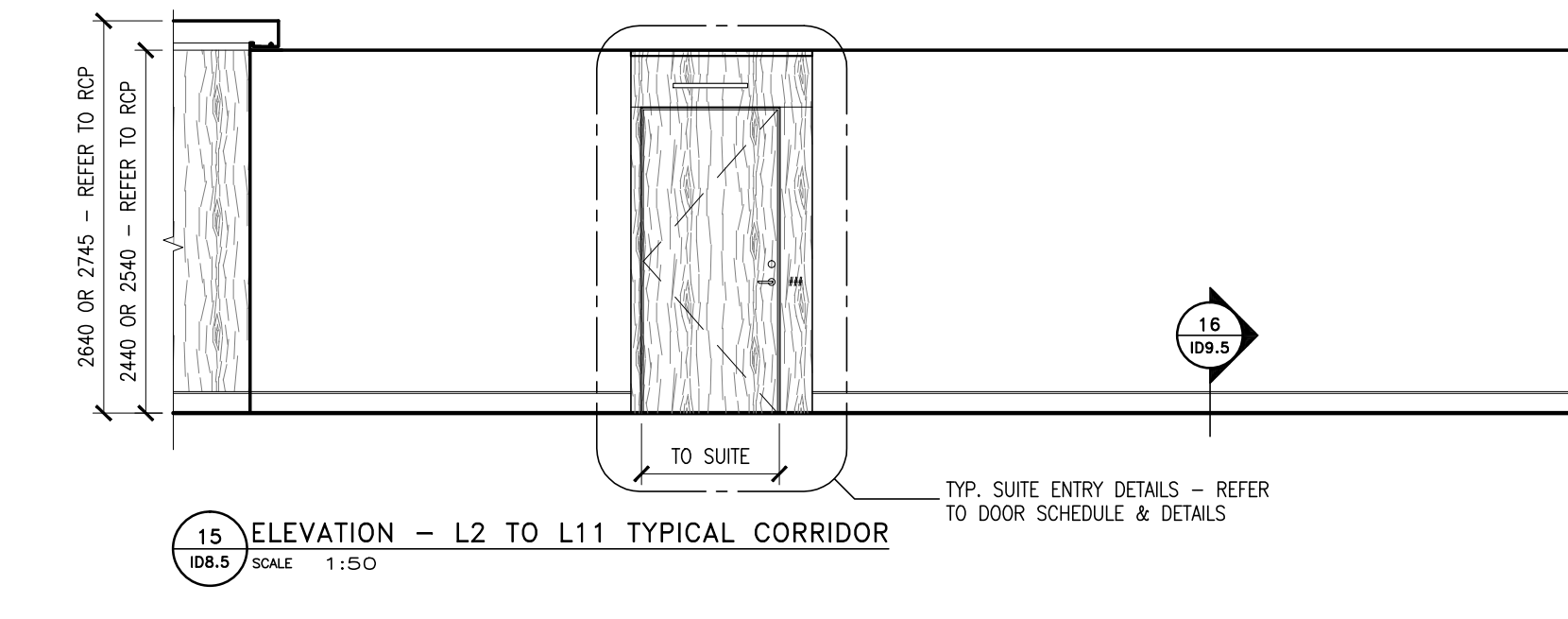
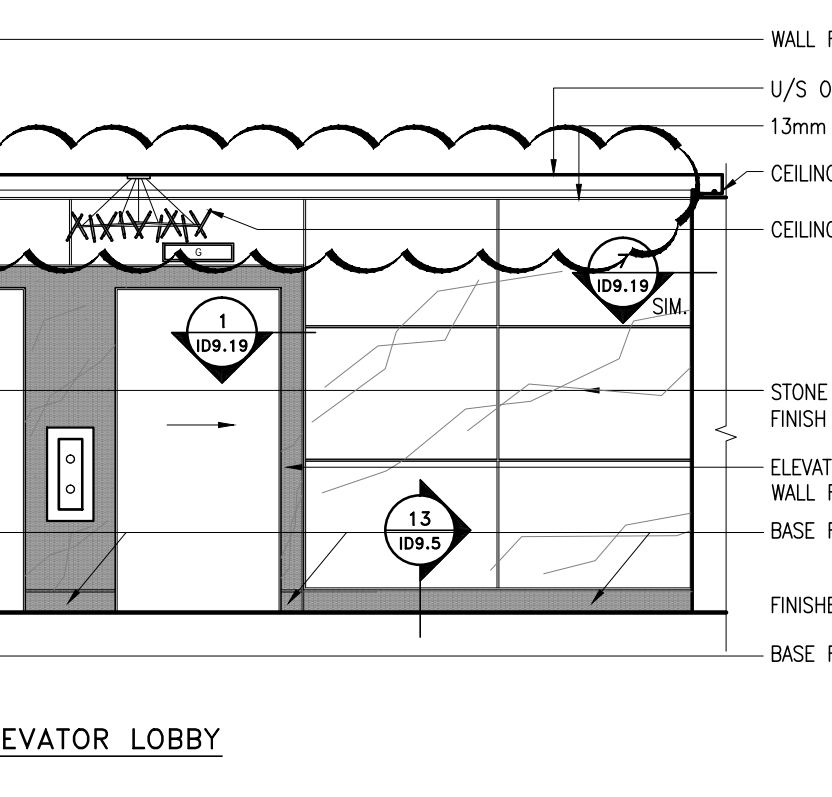
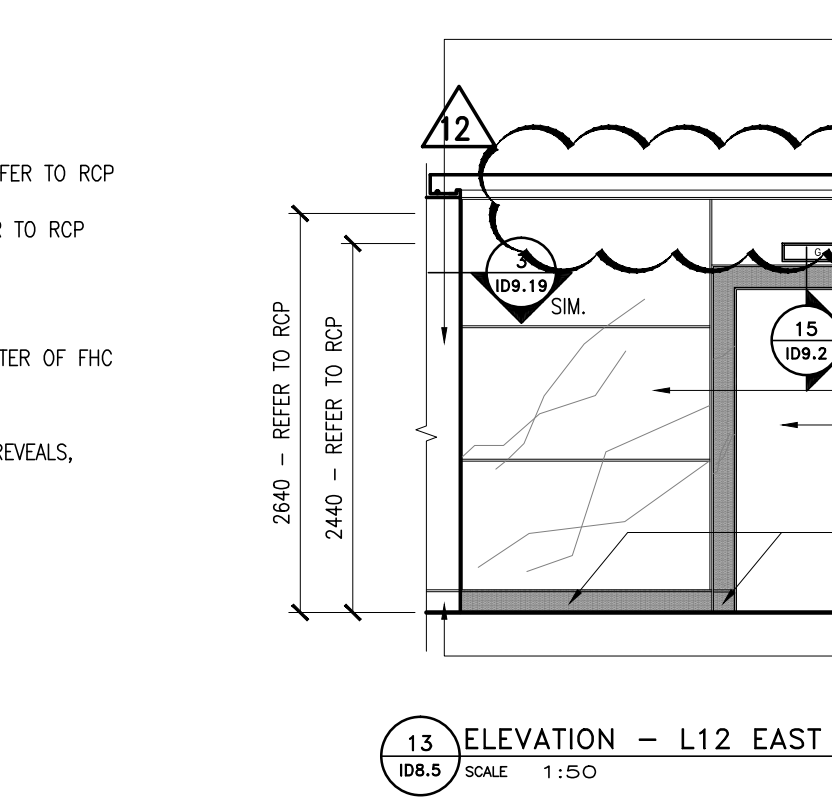
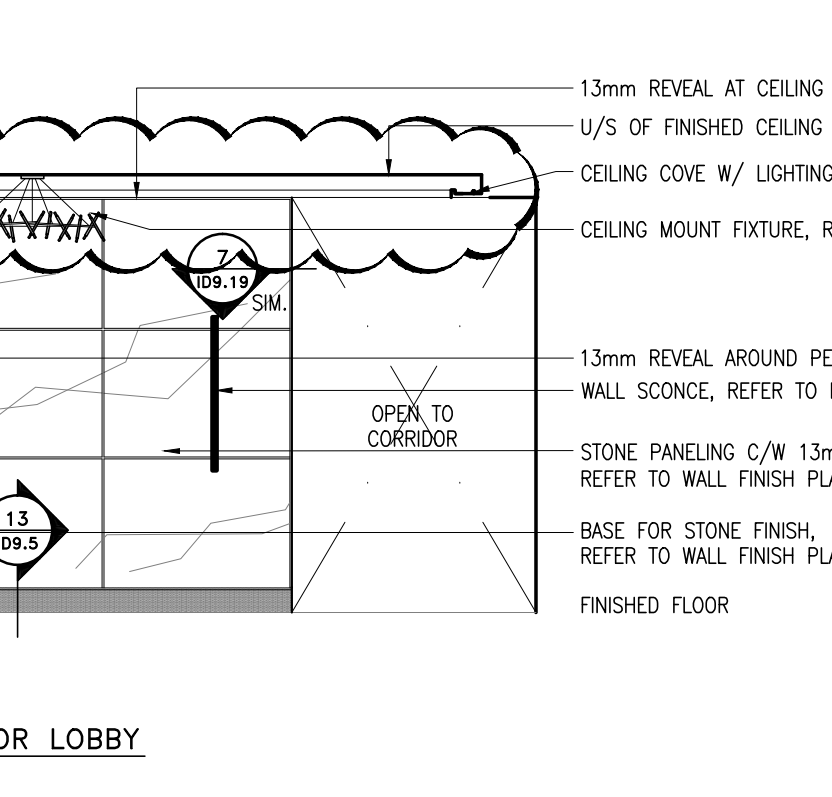
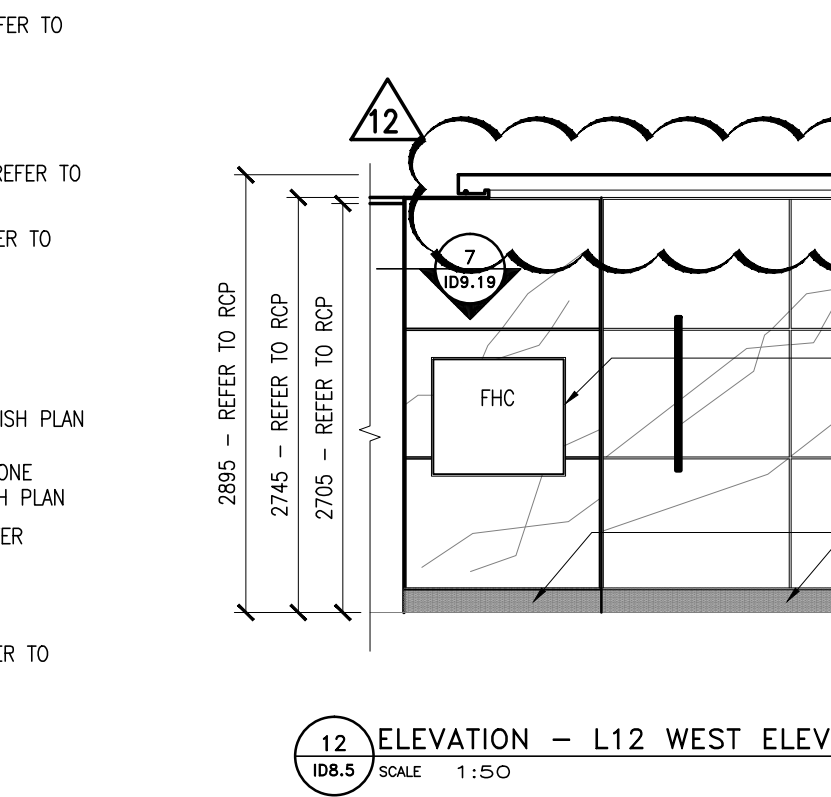
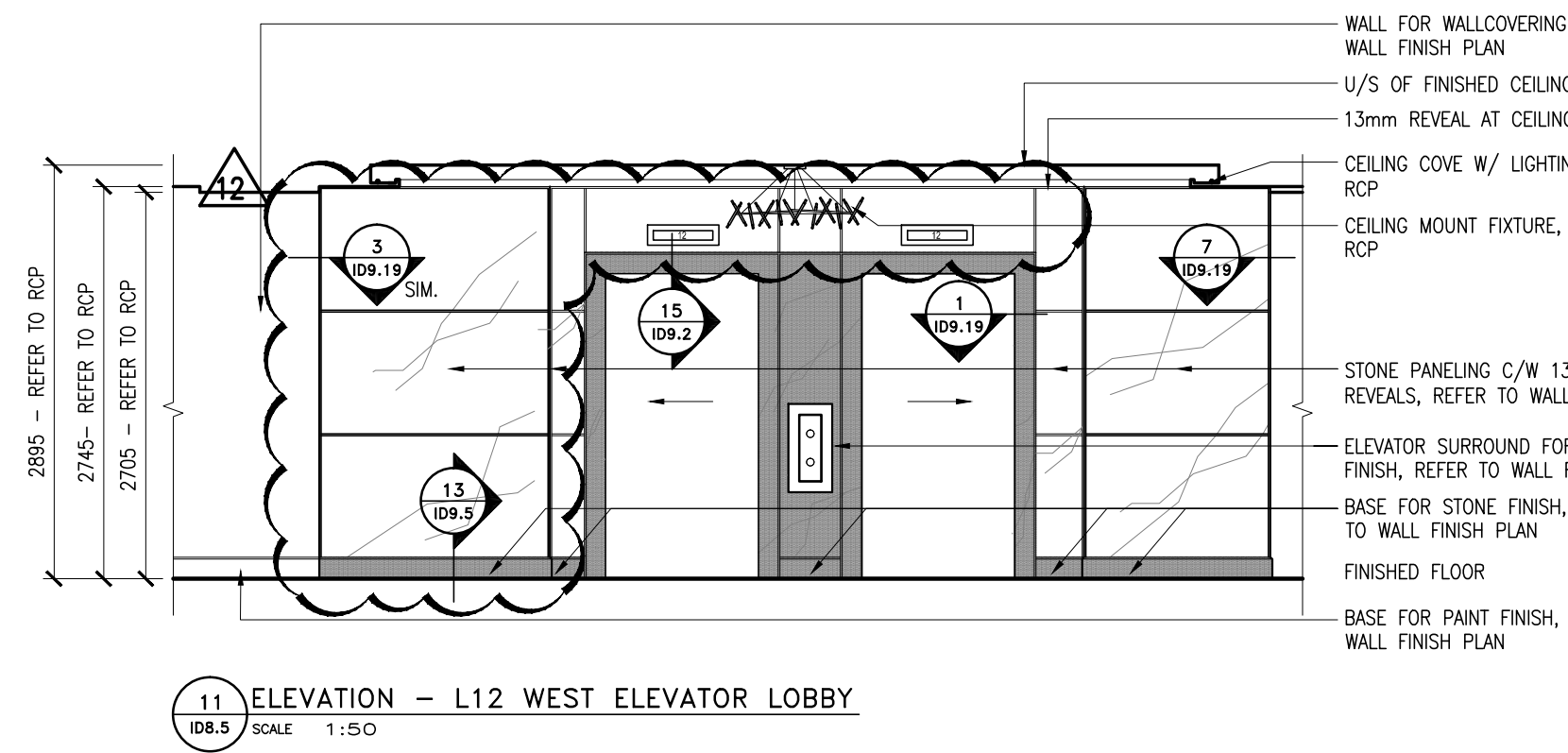
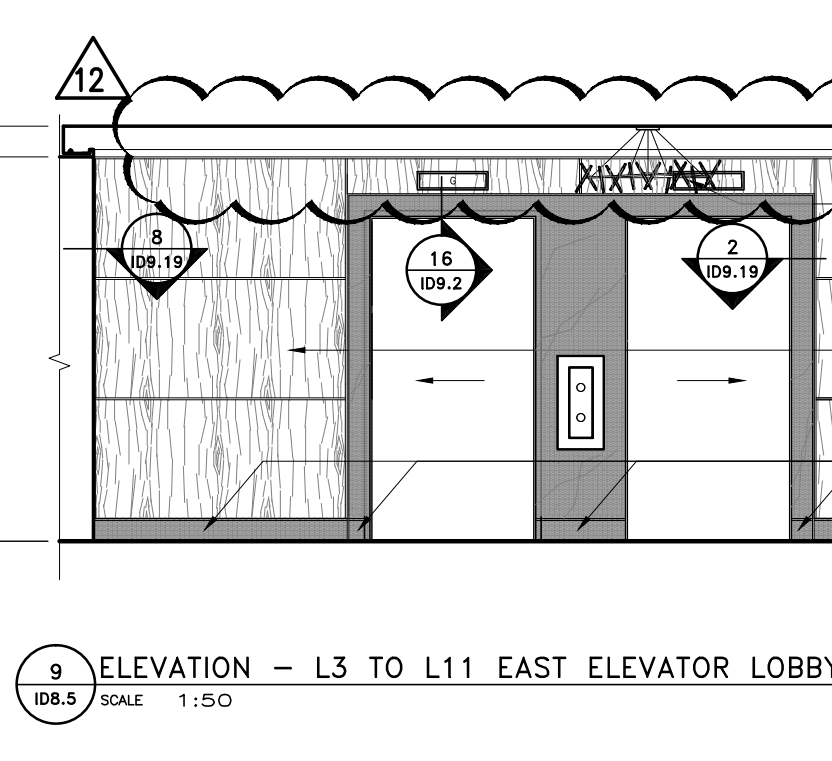
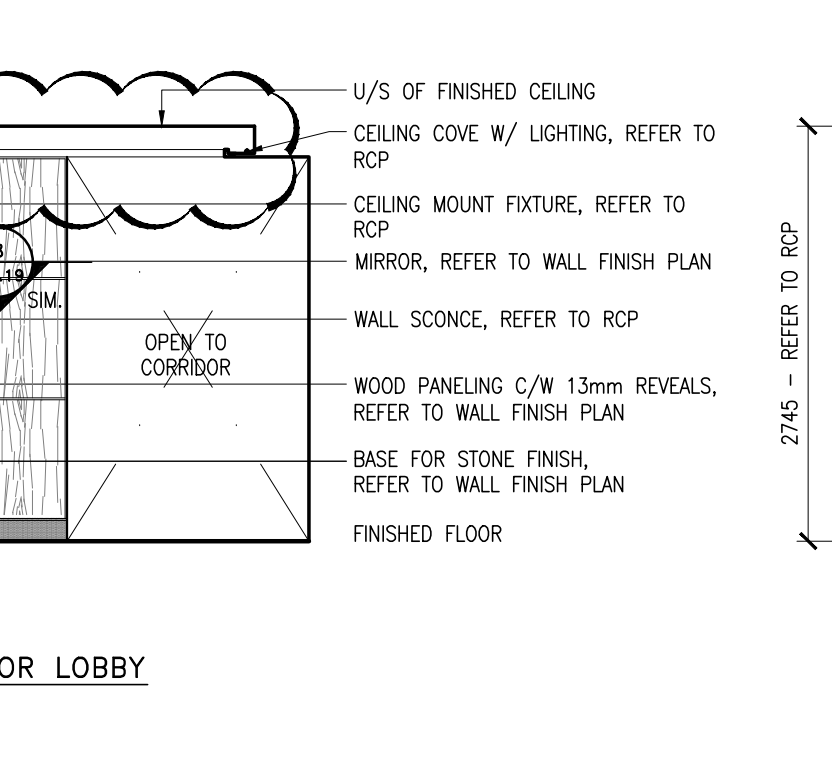
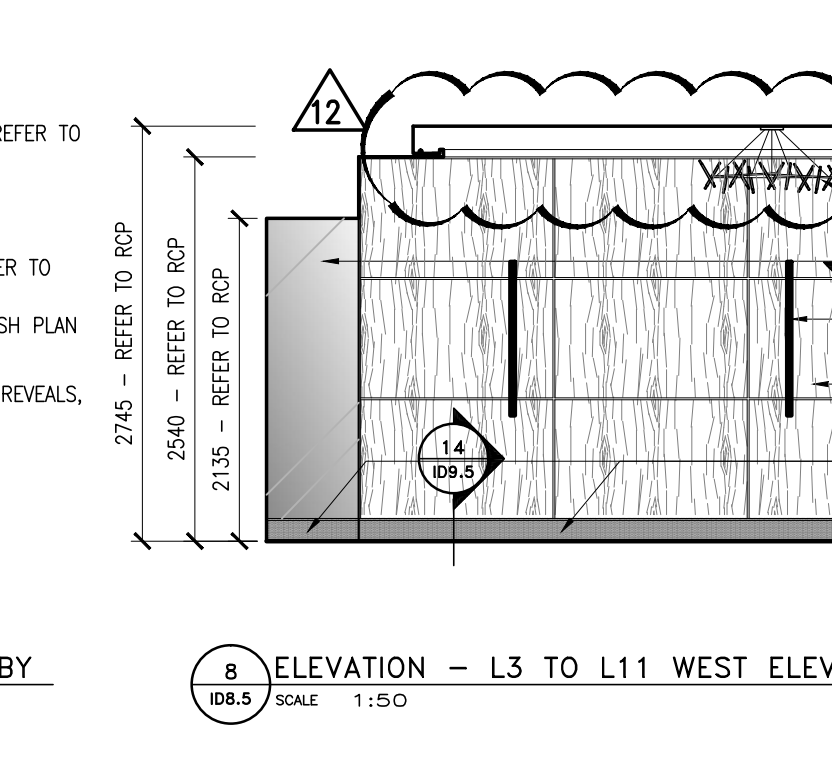
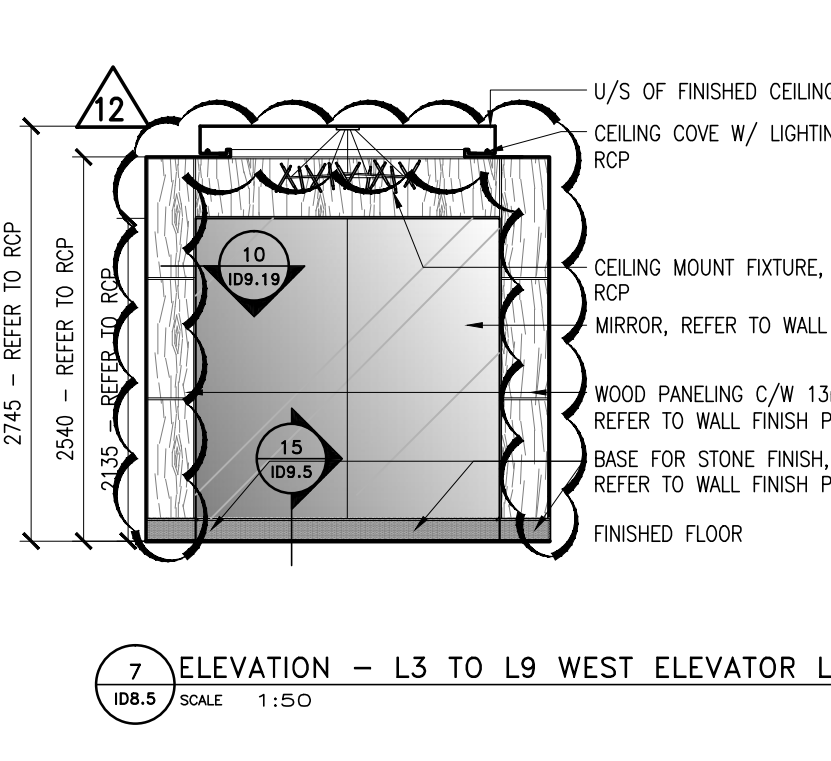
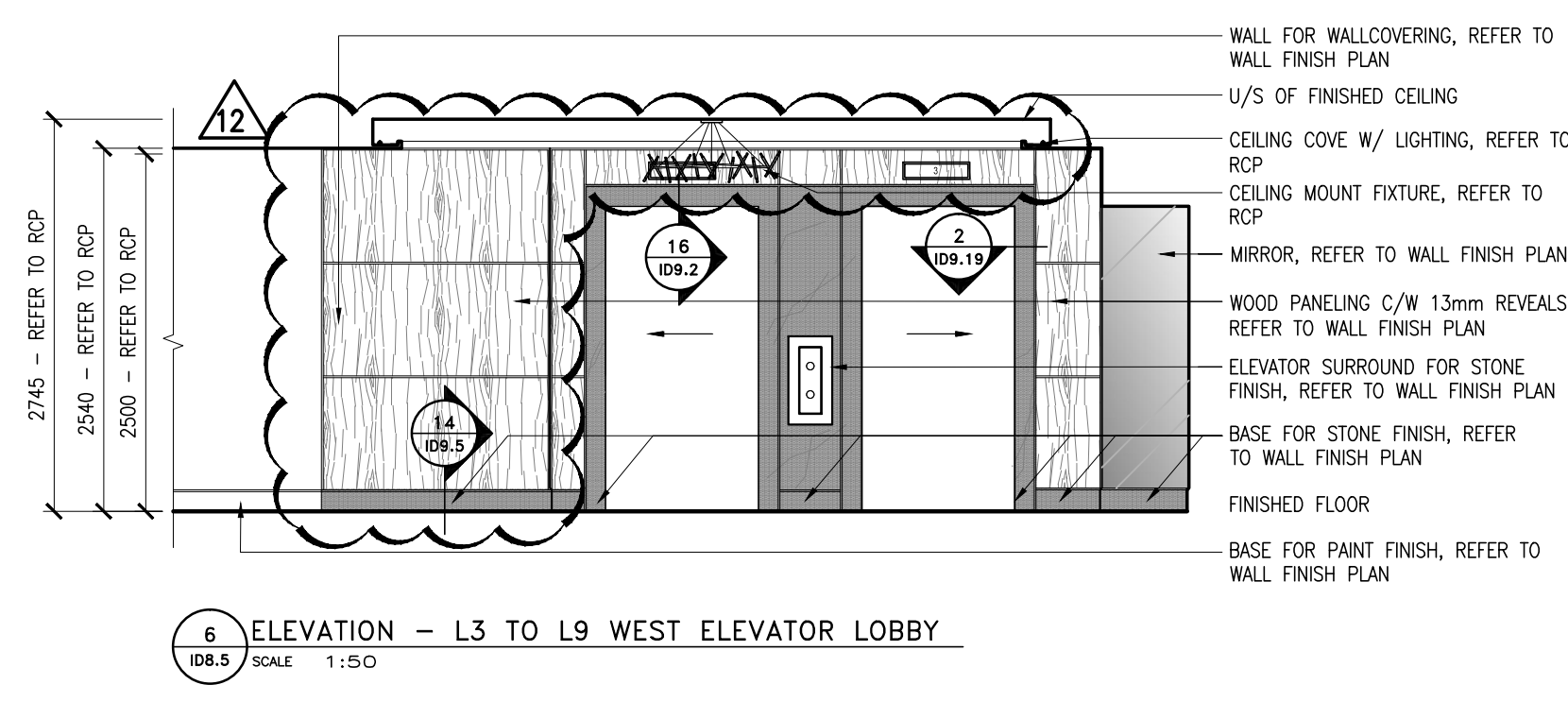
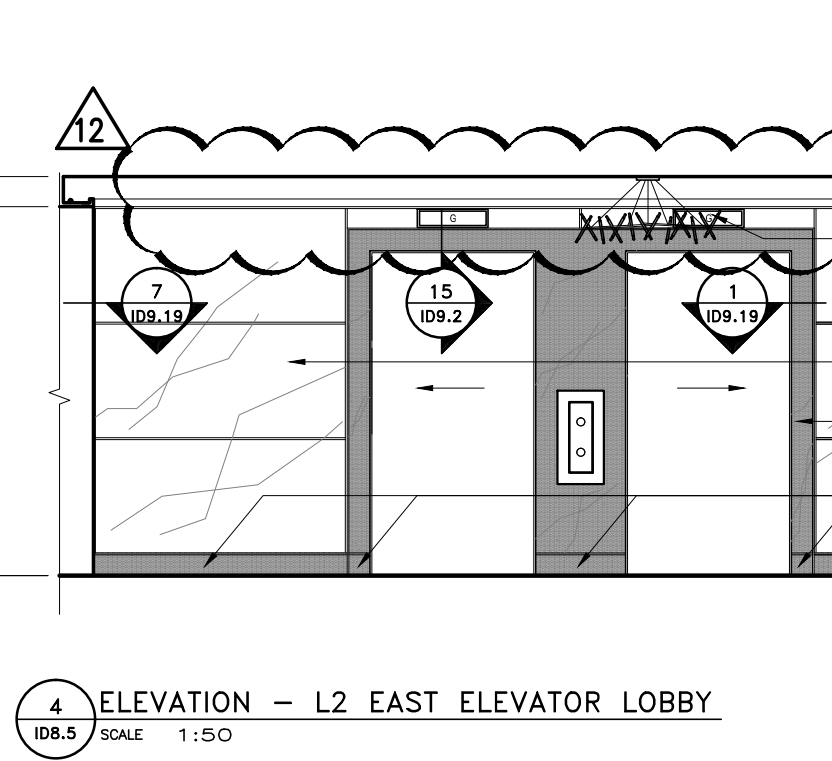
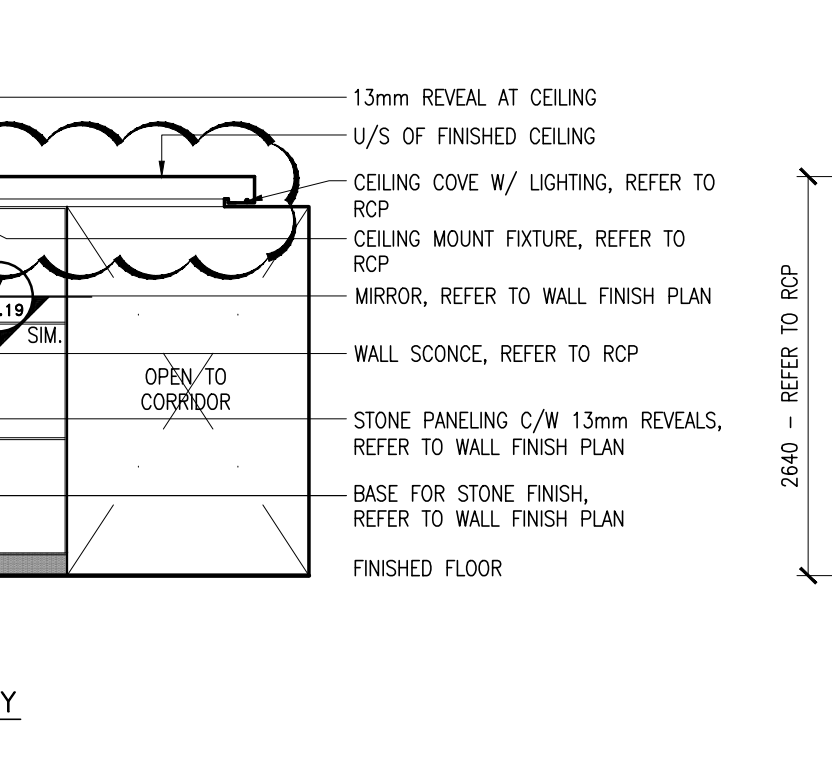
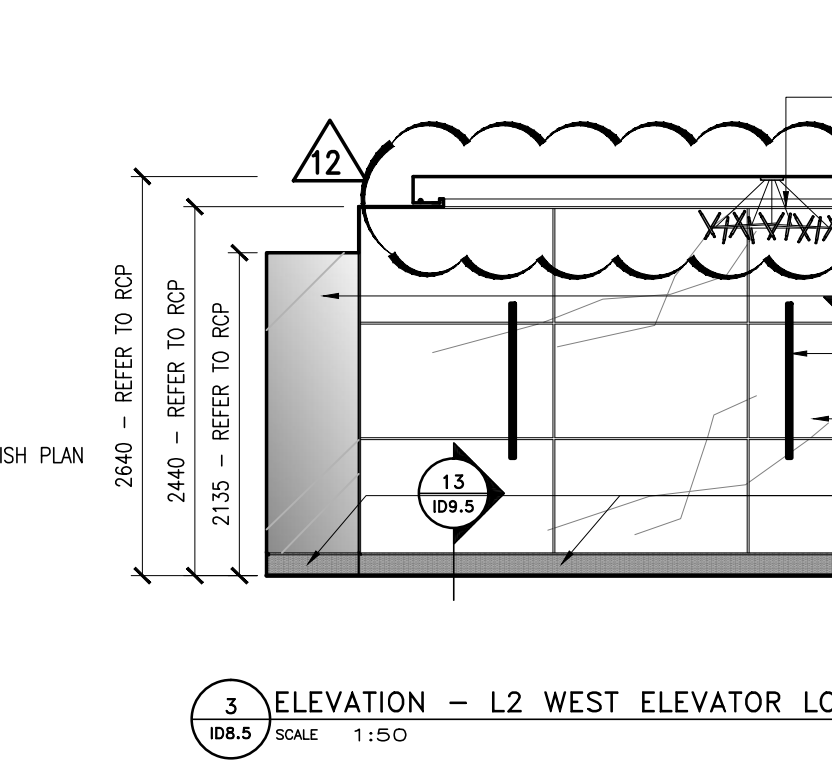
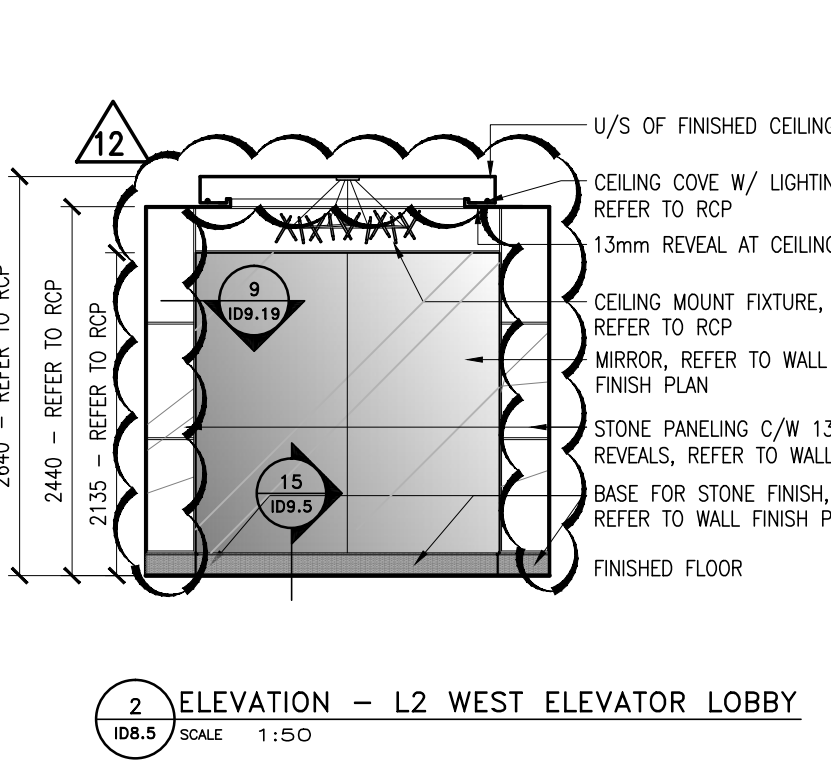
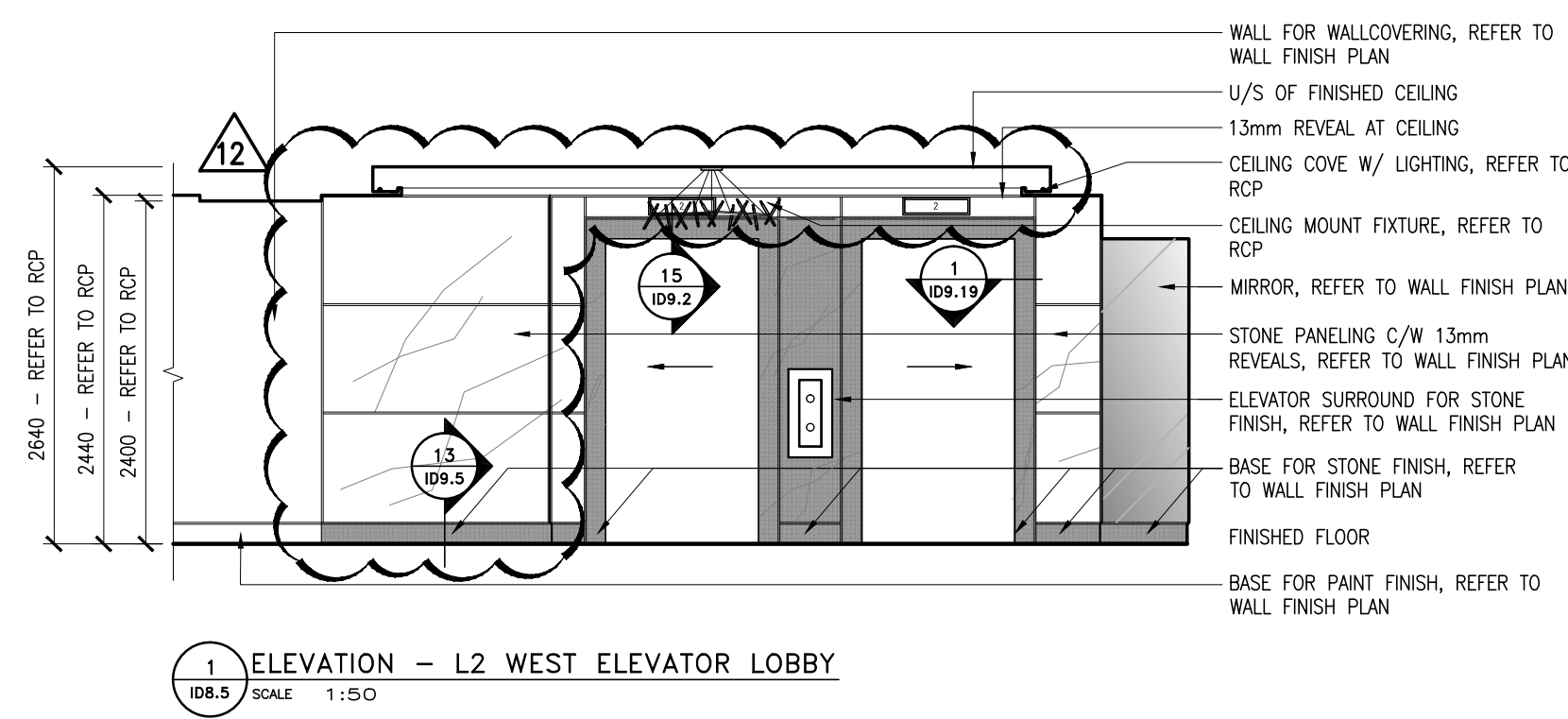


Notes:

- CONTRACTOR AND ALL SUB-TRADES SHALL VERIFY ALL SITE DIMENSIONS. ALL DRAWINGS, DETAILS AND SPECIFICATIONS AND REPORT ANY DISCREPANCIES TO THE INTERIOR DESIGNER IN WRITING FOR APPROVAL BEFORE PROCEEDING WITH THE WORK.
- CONTRACTOR AND SUB-CONTRACTORS, BEFORE PROCEEDING WITH WORK, MUST SUBMIT ALL NECESSARY SAMPLES FOR APPROVAL OF QUALITY AND FINISH TO THE INTERIOR DESIGNER.
- CONTRACTOR MUST COMPLY WITH THE CONTRACT DOCUMENTS, PERFORMANCE REQUIREMENTS, APPLICABLE CODES AND REGULATIONS.
- ALL DRAWINGS AND WRITTEN MATERIAL HEREIN CONSTITUTES THE ORIGINAL AND UNPUBLISHED WORK OF I B IV DESIGN ASSOCIATES INC. AND MAY NOT BE DUPLICATED, USED OR DISCLOSED WITHOUT PRIOR WRITTEN CONSENT OF I B IV DESIGN ASSOCIATES INC.
- DRAWINGS NOT TO BE SCALED

Issue:

06 ISSUED FOR CLIENT REVIEW	16.01.15
07 ISSUED FOR TENDER	16.03.15
08 ISSUED FOR ADDENDUM	16.09.20
10 ISSUED FOR CONSTRUCTION	17.06.19
12 SITE INSTRUCTION #02	17.07.25



Hines TRIDEL

AQUAVISTA
 AT BAYSIDE TORONTO
 1 EDEWATER DRIVE, TORONTO ONTARIO

77 MOWAT AVENUE, SUITE 100
 TORONTO, ONTARIO M6K 3G3 - CANADA
 T + 1 416 531 2224
 12 DEBORAH STREET
 MISSISSAUGA, ONTARIO L4W 1G3 - USA
 T + 1 212 392 4952

TYPICAL CORRIDOR ELEVATIONS

Our Project Number: 14008
 Designed By: DMJ/R, VV, SG
 Drawn By: DMJ/R, VV, SG, BP

ID8.5