

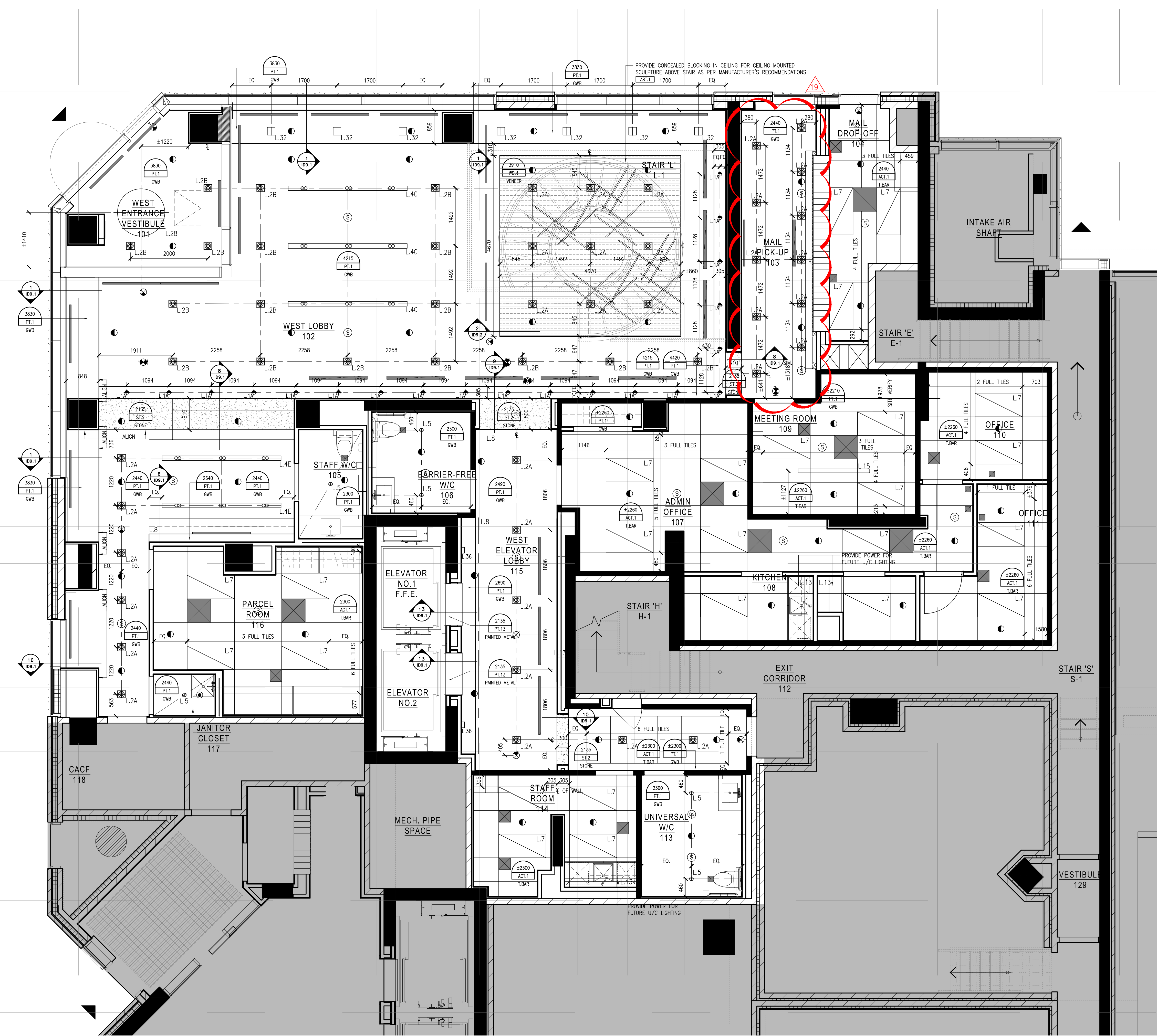
LEGEND : DRAWING SYMBOLS	
	DETAIL NUMBER REFER TO "16" X 48" DETAIL PNG
	CEILING HEIGHT REFER TO "17" X 17" PRODUCT SPECIFICATIONS
	CEILING FINISH REFER TO "17" X 17" LIGHTING SPECIFICATIONS
	WOOD GRAIN DIRECTION
	UPRIGHT SPRINKLER CODE REFER TO CONSULTANT'S DRAWINGS FOR SPECIFICATIONS & LOCATIONS
	PENDANT SPRINKLER CODE REFER TO CONSULTANT'S DRAWINGS FOR SPECIFICATIONS & LOCATIONS
	SPHERICAL SPRINKLER CODE REFER TO CONSULTANT'S DRAWINGS FOR SPECIFICATIONS & LOCATIONS
	LINEAR DIFFUSER CODE REFER TO MECHANICAL CONSULTANT'S DRAWINGS FOR SPECIFICATIONS & LOCATIONS
	RETURN AIR CODE REFER TO MECHANICAL CONSULTANT'S DRAWINGS FOR SPECIFICATIONS & LOCATIONS
	SUPPLY AIR CODE REFER TO MECHANICAL CONSULTANT'S DRAWINGS FOR SPECIFICATIONS & LOCATIONS
	EXHAUST AIR CODE REFER TO MECHANICAL CONSULTANT'S DRAWINGS FOR SPECIFICATIONS & LOCATIONS
	ACCESS PANEL CODE REFER TO MECHANICAL CONSULTANT'S DRAWINGS FOR SPECIFICATIONS & LOCATIONS

LEGEND : DRAWING SYMBOLS (CONT'D)	
	CEILING MOUNTED SPRINKLER REFER TO CONSULTANT'S DRAWINGS FOR SPECIFICATIONS & LOCATIONS
	WALL MOUNTED EXIT LIGHT REFER TO CONSULTANT'S DRAWINGS FOR SPECIFICATIONS & LOCATIONS
	CEILING MOUNTED EXIT LIGHT REFER TO CONSULTANT'S DRAWINGS FOR SPECIFICATIONS & LOCATIONS
	CEILING MOUNTED OCCUPANCY SENSOR REFER TO CONSULTANT'S DRAWINGS FOR SPECIFICATIONS & LOCATIONS
	CEILING OR WALL MOUNTED SMOKE DETECTOR REFER TO CONSULTANT'S DRAWINGS FOR SPECIFICATIONS & LOCATIONS

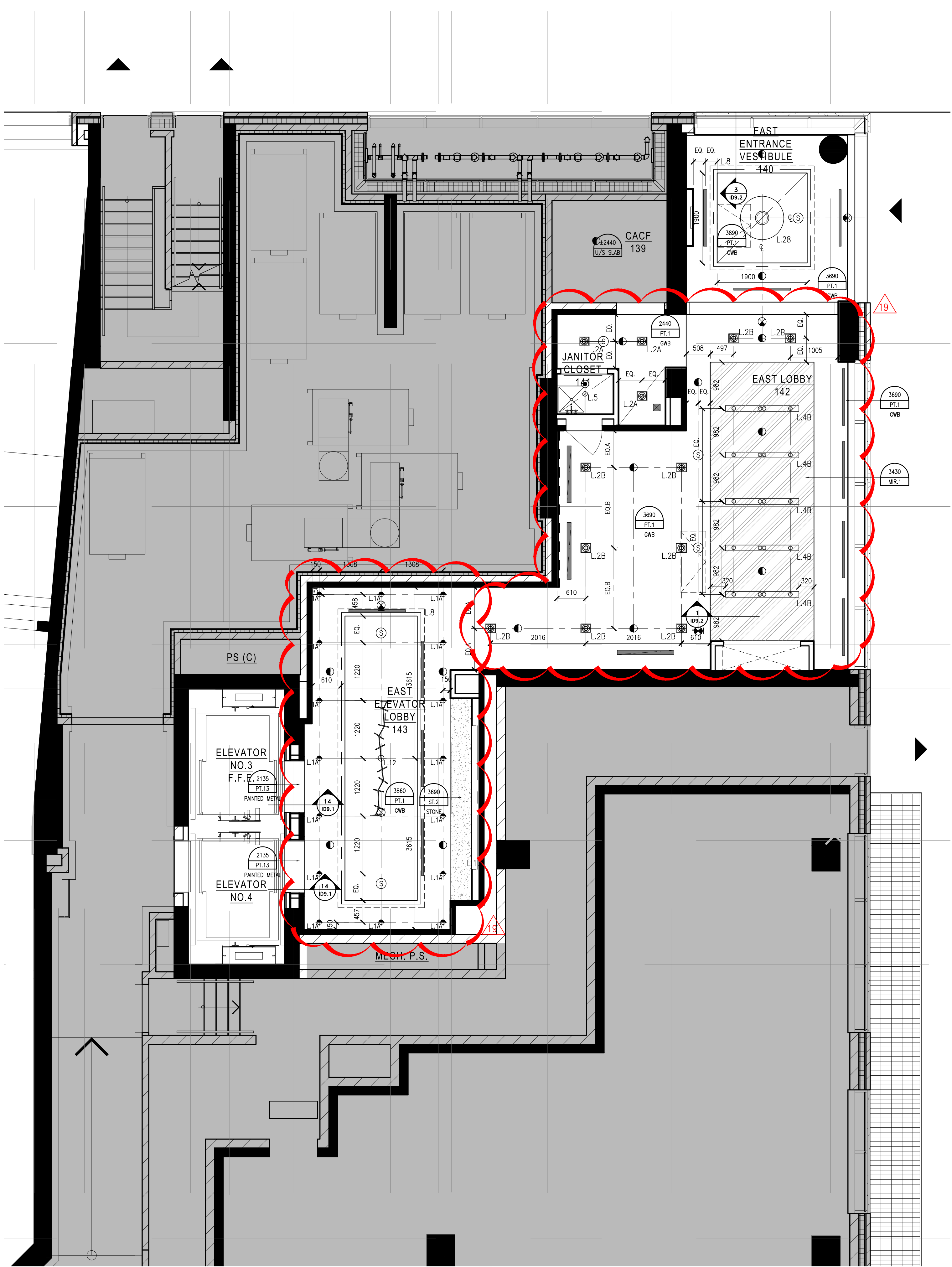
LEGEND : WALL SCONCE & PENDANT MOUNTING HEIGHTS	
NOTE: ALL PENDANT DIMENSIONS ARE FROM UNDERSIDE OF FIXTURE TO FINISHED FLOOR. ALL WALL SCONCE DIMENSIONS ARE FROM CENTRE OF FIXTURE TO FINISHED FLOOR.	
FIXTURE	MOUNTING HEIGHT
	2135MM
	2700MM

- REFLECTED CEILING NOTES**
- MECHANICAL AND ELECTRICAL WORK TO COMPLY WITH THE REQUIREMENTS OF THE BUILDING LANDLORD AND AUTHORITIES HAVING JURISDICTION.
 - REFER TO DESIGNER DRAWINGS FOR LOCATION OF CEILING FIXTURES. REFER TO ENGINEERING DRAWINGS FOR SPECIFICATIONS.
 - CONTRACTOR TO CROSS REFERENCE BETWEEN DESIGNER'S ELECTRICAL DRAWINGS, ENGINEER'S MECHANICAL DRAWINGS AND SITE CONDITIONS REPORT DISCREPANCIES TO THE DESIGNER FOR CLARIFICATION.
 - CONTRACTOR TO PROVIDE GREENS IN SPRINKL CEILING TO ACCOMMODATE SPRINKLERS, EXIT LIGHTS, ACCESS PANELS, RECESSED DOWN LIGHTS, AIR DIFFUSERS. CONTRACTOR TO REFER TO REFLECTED CEILING, PLAN AND ENGINEERING DRAWINGS AND SPECIFICATIONS.
 - LIGHT FIXTURES AND SWITCHES TO BE LOCATED IN ACCORDANCE WITH DESIGNER DRAWINGS. REPORT DISCREPANCIES TO THE DESIGNER PRIOR TO INSTALLATION.
 - CONTRACTOR TO PROVIDER AIR TRANSFER DUCTS IN ACCORDANCE WITH MECHANICAL DRAWINGS WHERE CONSTRUCTION OCCURS ABOVE SUSPENDED CEILING TO U/S OF SLAB.
 - REFER TO ENGINEERING DRAWINGS FOR LIFE SAFETY SYSTEMS.
 - ELECTRICAL CONSULTANT TO CONFIRM QUANTITY AND LOCATION OF LUMINAIRES REQUIRED TO ACHIEVE LIGHTING LEVELS AND DISTRIBUTION AS REQUIRED BY LOCAL GOVERNING CODES AND REGULATIONS.
 - ALL LIGHT FIXTURE TO BE ON DIMMERS.
 - CONTRACTOR TO CONFIRM CEILING HEIGHT & CONDITIONS AND NOTIFY DESIGNER OF ANY DISCREPANCIES.
 - CONTRACTOR & LIGHTING SUPPLIER TO VERIFY QUANTITY OF FIXTURES PRIOR TO ORDERING AND INSTALLING.

- Notes:**
- CONTRACTOR AND ALL SUB-TRADES SHALL VERIFY ALL SITE DIMENSIONS. ALL DRAWINGS, DETAILS AND SPECIFICATIONS AND REPORT ANY DISCREPANCIES TO THE INTERIOR DESIGNER IN WRITING FOR APPROVAL BEFORE PROCEEDING WITH THE WORK.
 - CONTRACTOR AND SUB-CONTRACTORS, BEFORE PROCEEDING WITH WORK, MUST SUBMIT ALL NECESSARY SAMPLES FOR APPROVAL OF QUALITY AND FINISH TO THE INTERIOR DESIGNER.
 - CONTRACTOR MUST COMPLY WITH THE CONTRACT DOCUMENTS, PERFORMANCE REQUIREMENTS, APPLICABLE CODES AND REGULATIONS.
 - ALL DRAWINGS AND WRITTEN MATERIAL HEREIN CONSTITUTES THE ORIGINAL AND UNPUBLISHED WORK OF "18 BY 18 DESIGN ASSOCIATES INC." AND MAY NOT BE DUPLICATED, USED OR DISCLOSED WITHOUT PRIOR WRITTEN CONSENT OF "18 BY 18 DESIGN ASSOCIATES INC."
 - DRAWINGS NOT TO BE SCALED
- Issue:**
- | | |
|-----------------------------|----------|
| 01 ISSUED FOR COORDINATION | 15.04.09 |
| 02 ISSUED FOR COORDINATION | 15.04.13 |
| 04 ISSUED FOR COORDINATION | 15.11.11 |
| 05 ISSUED FOR COORDINATION | 16.01.11 |
| 06 ISSUED FOR CLIENT REVIEW | 16.01.15 |
| 07 ISSUED FOR TENDER | 16.03.18 |
| 08 ISSUED FOR ADDENDUM | 16.09.20 |
| 09 ISSUED FOR ADDENDUM | 17.01.27 |
| 10 ISSUED FOR CONSTRUCTION | 17.06.19 |
| 13 SITE INSTRUCTION #03 | 17.11.10 |
| 16 SITE INSTRUCTION #06 | 18.05.04 |
| 17 SITE INSTRUCTION #07 | 18.05.31 |
| 19 SITE INSTRUCTION #09 | 18.07.05 |



1 REFLECTED CEILING PLAN
SCALE: 1:50



2 REFLECTED CEILING PLAN
SCALE: 1:50

Hines TRIDEL

AQUAVISTA
AT BAYSIDE TORONTO
1 EDgewater Drive, Toronto Ontario

77 MOWAT AVENUE, SUITE 100
TORONTO, ONTARIO M5K 3G3 - CANADA
T + 1 416 531 2224
12 DEBROSSER STREET
NEW YORK, NEW YORK 10013 - USA
T + 1 212 392 4952

18 BY 18 DESIGN

Drawing Title:
**LEVEL 1
REFLECTED CEILING
PLAN**

Our Project Number:
14008

Designed By:
DMJ/R, VW/SQ

Checked By:
DMJ/R, VW/SQ, BP

Drawing Number:
ID3.6