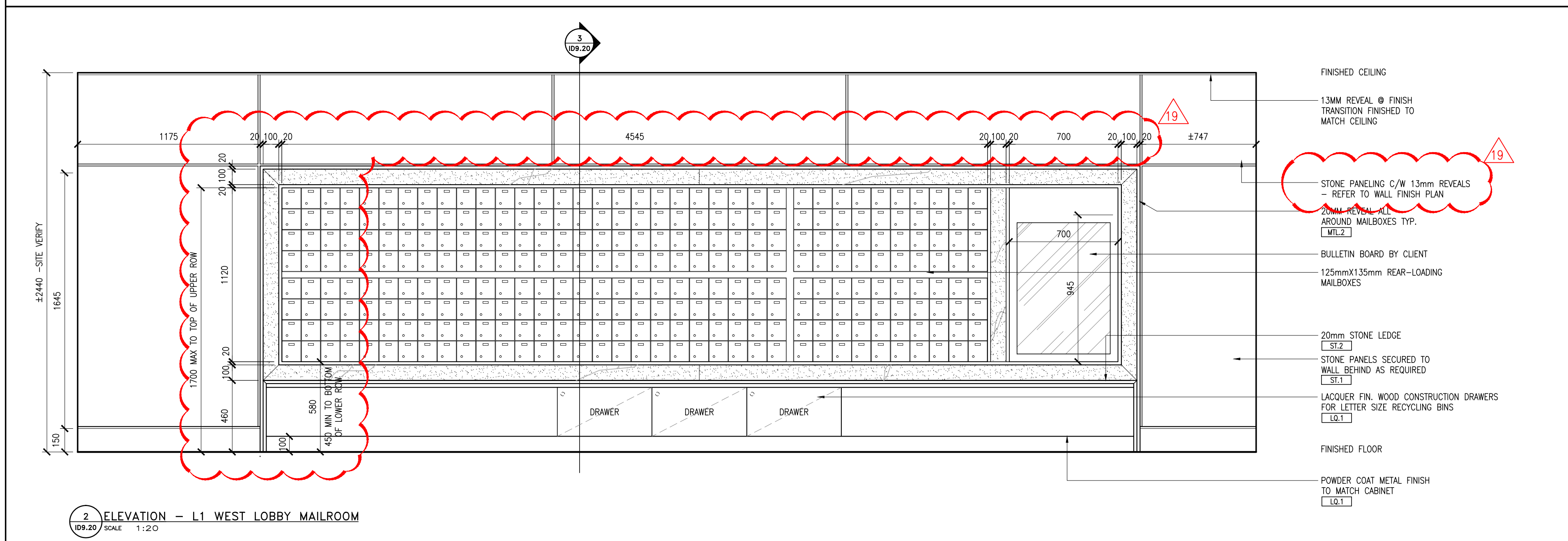
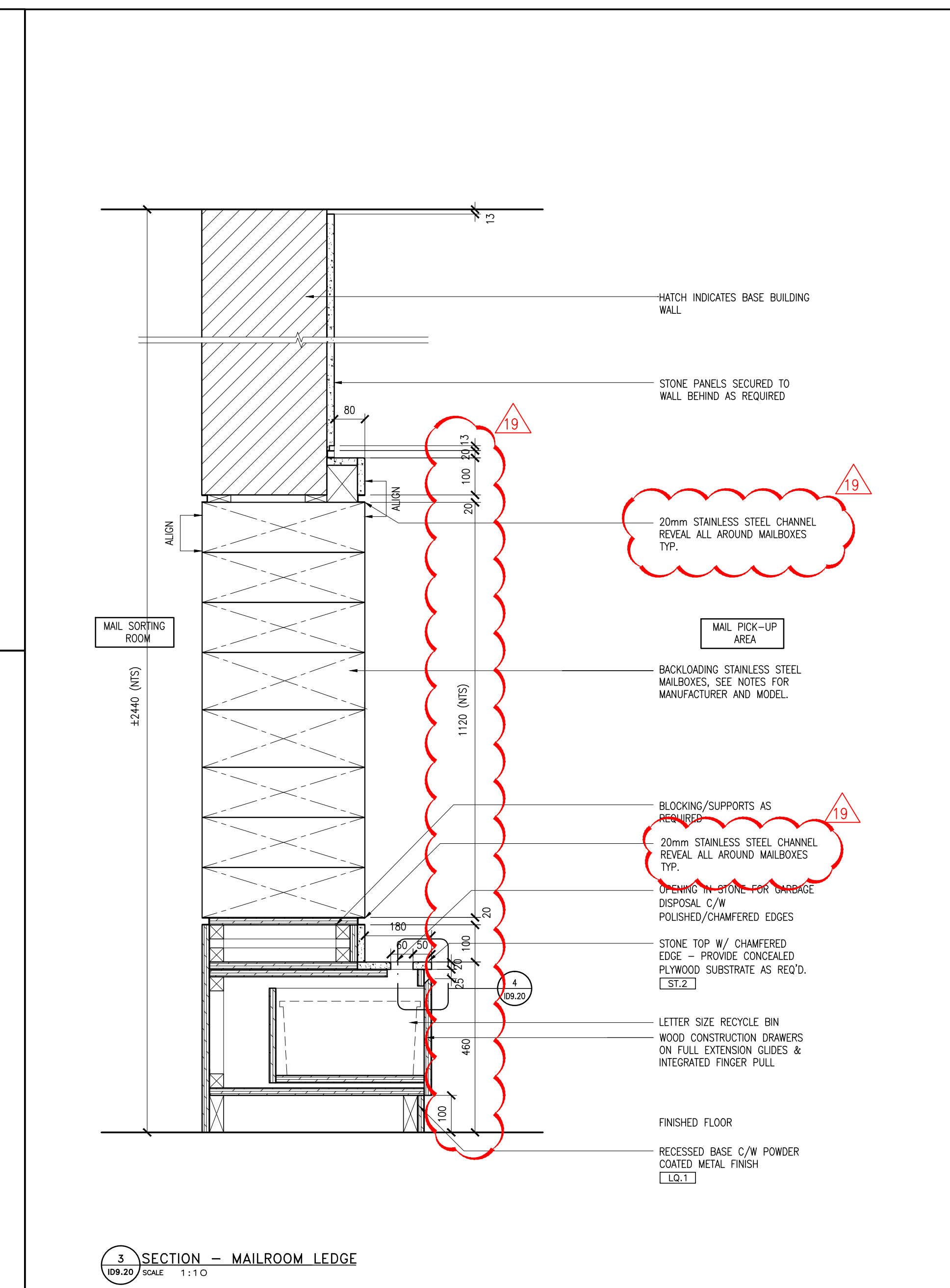


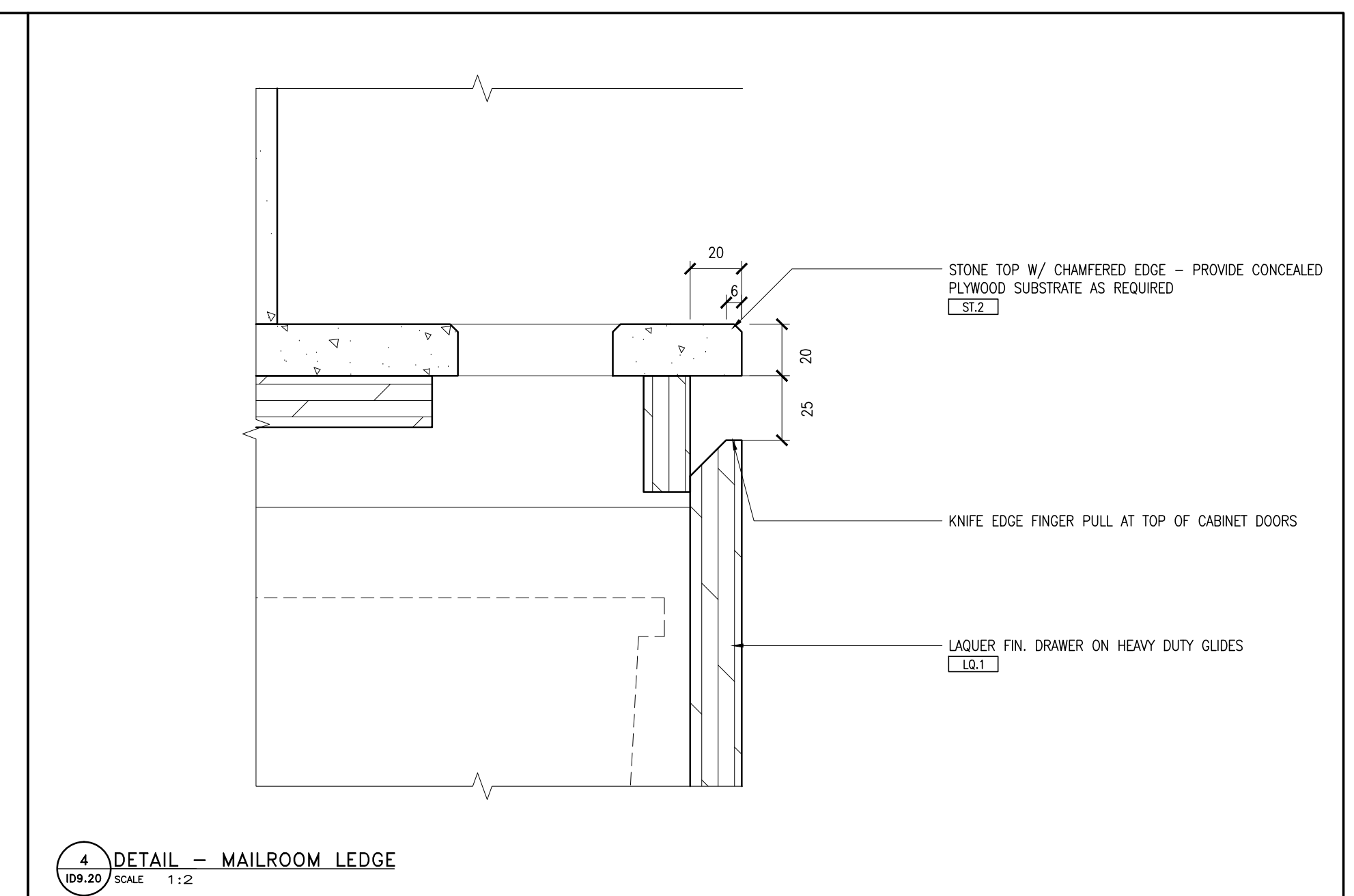
1 PLAN - L1 WEST LOBBY MAILROOM
DW/BJ/5042 1:20



2 ELEVATION - L1 WEST LOBBY MAILROOM
DW/BJ/5042 1:20



3 SECTION - MAILROOM LEDGE
DW/BJ/5042 1:10



4 DETAIL - MAILROOM LEDGE
DW/BJ/5042 1:2

Notes:

- CONTRACTOR AND ALL SUB-TRADES SHALL VERIFY ALL SITE DIMENSIONS. ALL DRAWINGS, DETAILS AND SPECIFICATIONS AND REPORT ANY DISCREPANCIES TO THE INTERIOR DESIGNER IN WRITING FOR APPROVAL BEFORE PROCEEDING WITH THE WORK.
- CONTRACTOR AND SUB-CONTRACTORS, BEFORE PROCEEDING WITH WORK, MUST SUBMIT ALL NECESSARY SAMPLES FOR APPROVAL OF QUALITY AND FINISH TO THE INTERIOR DESIGNER.
- CONTRACTOR MUST COMPLY WITH THE CONTRACT DOCUMENTS, PERFORMANCE REQUIREMENTS, APPLICABLE CODES AND REGULATIONS.
- ALL DRAWINGS AND WRITTEN MATERIAL HEREIN CONSTITUTES THE ORIGINAL AND UNPUBLISHED WORK OF I BY IV DESIGN ASSOCIATES INC. AND MAY NOT BE DUPLICATED, USED OR DISCLOSED WITHOUT PRIOR WRITTEN CONSENT OF I BY IV DESIGN ASSOCIATES INC.
- DRAWINGS NOT TO BE SCALED.

Issue:

06 ISSUED FOR CLIENT REVIEW	16.01.15
07 ISSUED FOR TENDER	16.03.15
10 ISSUED FOR CONSTRUCTION	17.06.19
19 SITE INSTRUCTION #09	18.07.06
-	-
-	-
-	-
-	-
-	-
-	-
-	-
-	-
-	-

Hines TRIDEL

AQUAVISTA
AT BAYSIDE TORONTO
1 EDGEWATER DRIVE, TORONTO ONTARIO

77 MOWAT AVENUE, SUITE 100
TORONTO, ONTARIO M6K 3G3 - CANADA
T + 1 416 531 2224
12 DEARBORN STREET
NEW YORK, NEW YORK 10013 - USA
T + 1 212 362 4952

Drawing Title:
**L1 WEST LOBBY
MAIL PICK-UP DETAILS**

Our Project Number:
14008
Designed By:
DM/BJ, VV/SG
Detailed By:
DM/BJ, VV/SG, LT
Drawing Number:

ID9.20