

# BLOORVISTA

AT ISLINGTON TERRACE

TRIDEL  
BUILT FOR LIFE

# BLOORVISTA

AT ISLINGTON TERRACE



## TOWNHOME I

3 bedroom, 2 1/2 bathrooms, living room, dining room plus patio

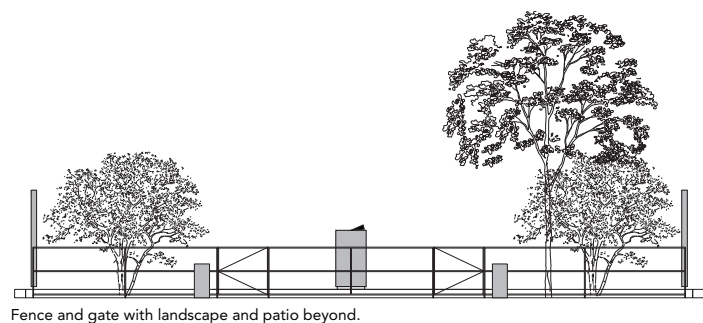
[tridel.com](http://tridel.com)

Fence and gate detail with landscape and patio beyond. Subject to change without notice. Illustrations are artist's concept. All dimensions are approximate and subject to normal construction variances. Dimensions may exceed the useable floor area. Sizes and specifications subject to change without notice. Furniture is displayed for illustration purposes only and does not necessarily reflect the electrical plan for the suite. Suites are sold unfurnished. Tridel® and Tridel Built For Life® are registered trademarks of Tridel and used under license agreement. ©Tridel 2015. All Rights Reserved. E.& O.E. September 2015

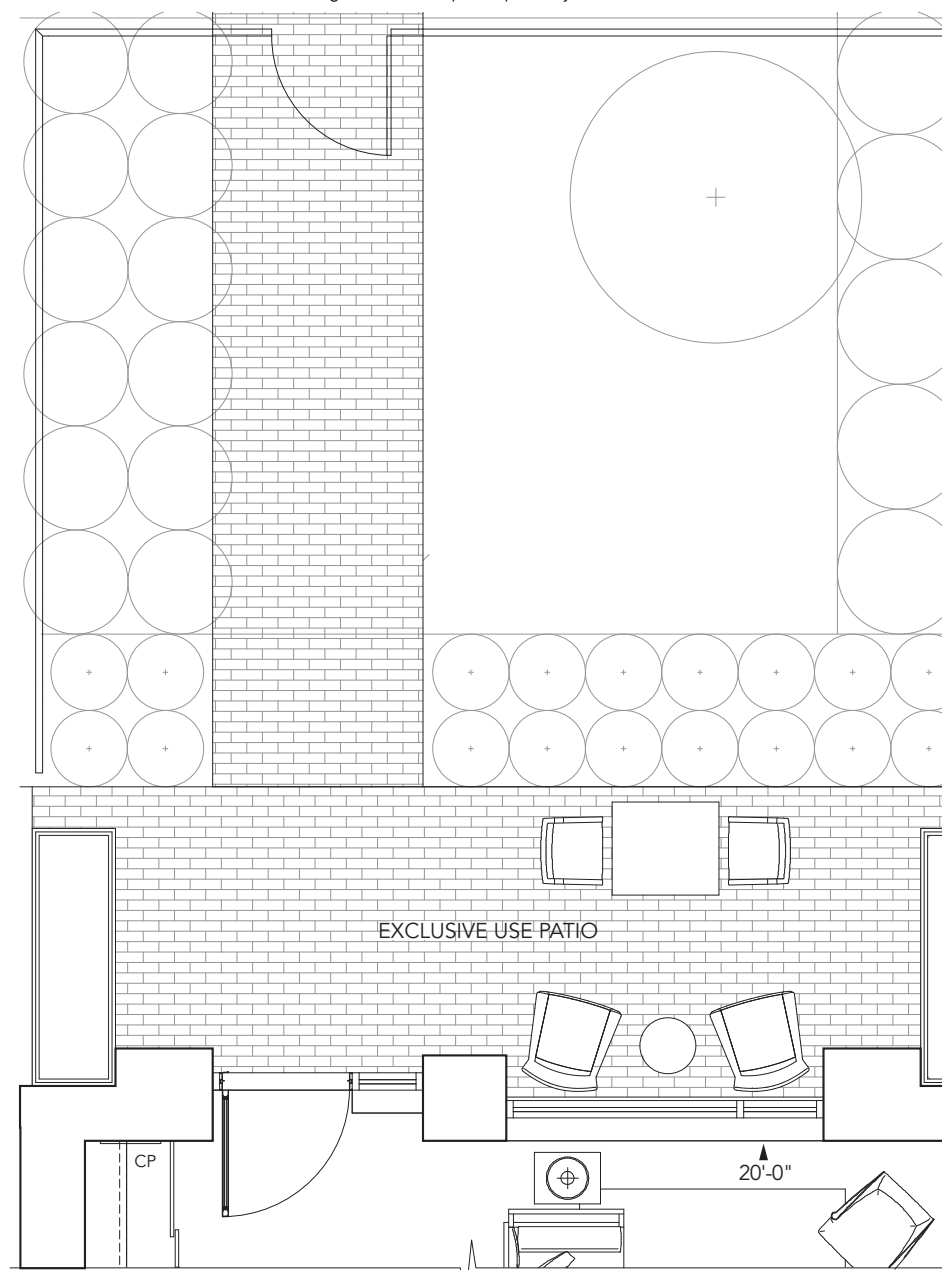


# TOWNHOME I

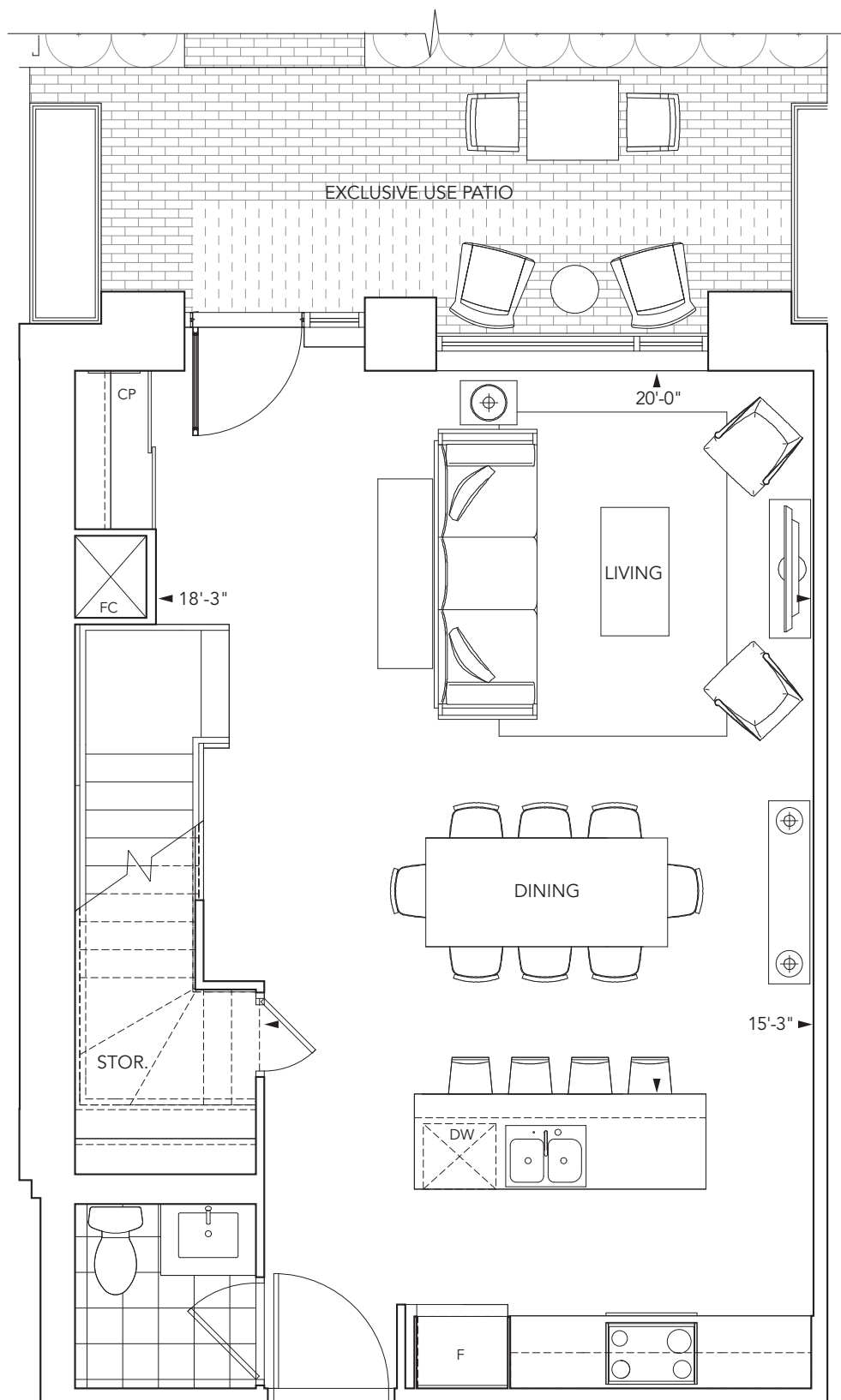
3 bedroom, 2 1/2 bathrooms, living room, dining room plus patio



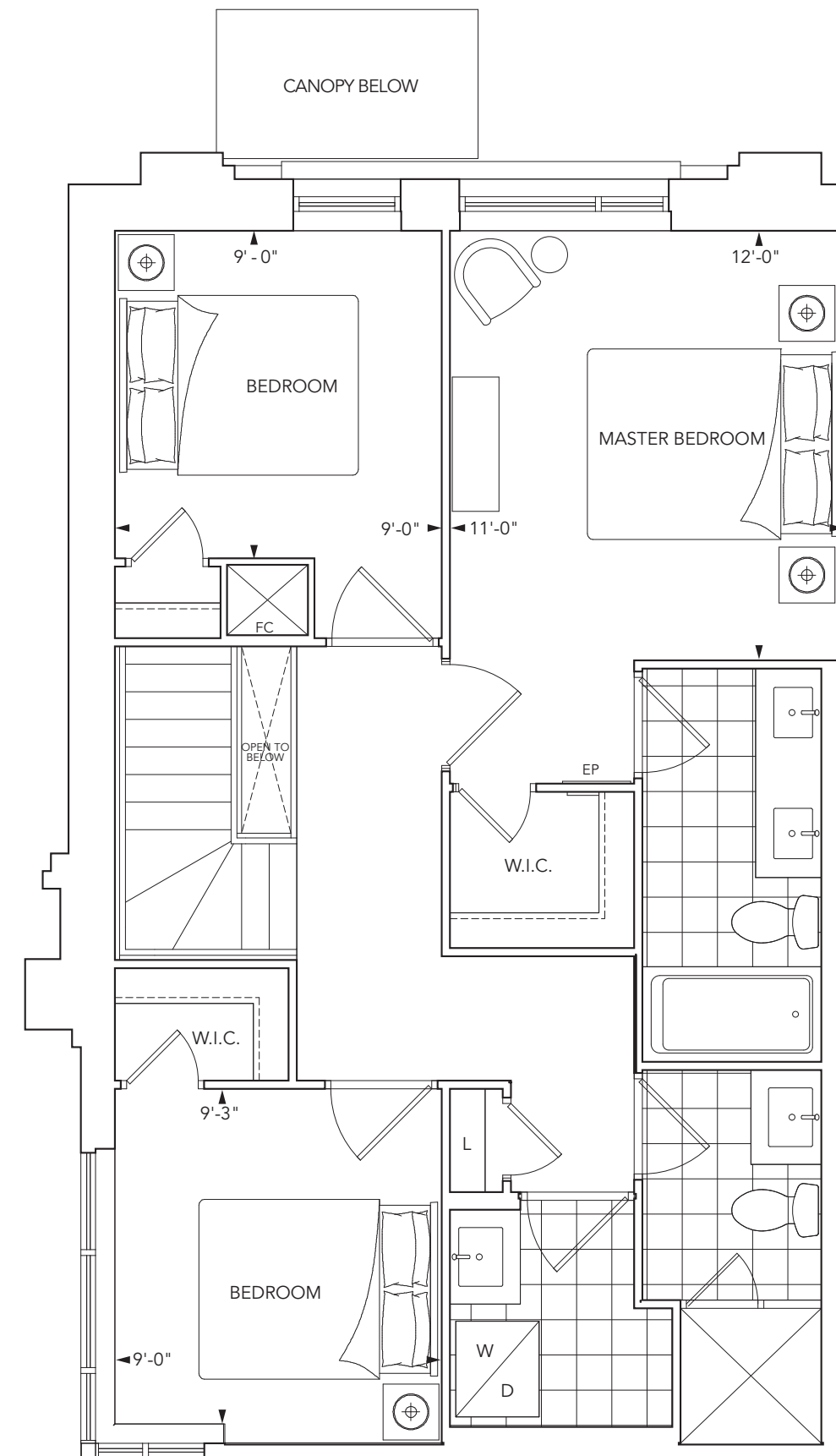
Fence and gate with landscape and patio beyond.



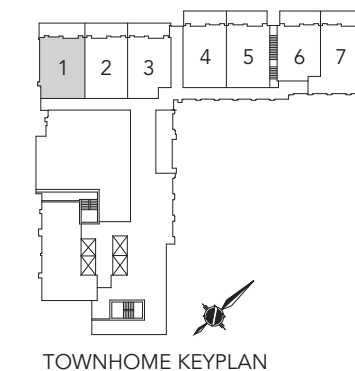
Ground Level Outdoor Patio



Ground Floor



Second Floor



TOWNHOME KEYPLAN

# BLOORVISTA

AT ISLINGTON TERRACE

TRIDEL  
BUILT FOR LIFE

# BLOORVISTA

AT ISLINGTON TERRACE



## TOWNHOME 2

2 bedroom, 2 1/2 bathrooms, living room, dining room, den plus patio

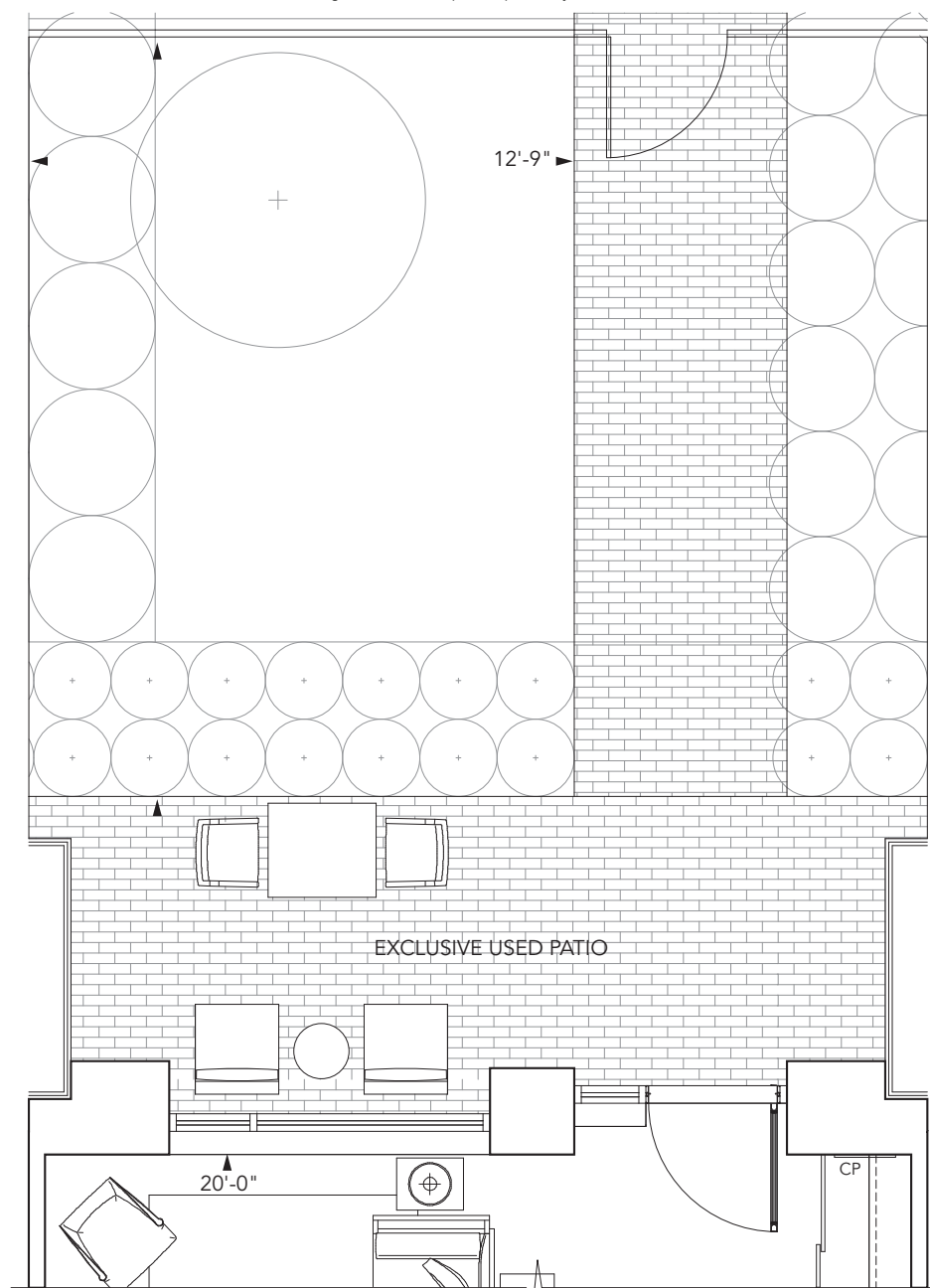
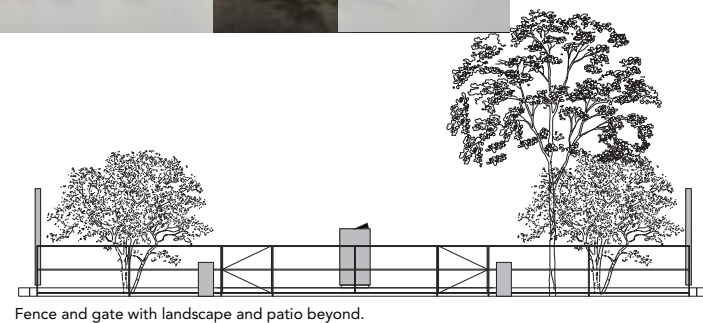
[tridel.com](http://tridel.com)

Fence and gate detail with landscape and patio beyond. Subject to change without notice. Illustrations are artist's concept. All dimensions are approximate and subject to normal construction variances. Dimensions may exceed the useable floor area. Sizes and specifications subject to change without notice. Furniture is displayed for illustration purposes only and does not necessarily reflect the electrical plan for the suite. Suites are sold unfurnished. Tridel® and Tridel Built For Life® are registered trademarks of Tridel and used under license agreement. ©Tridel 2015. All Rights Reserved. E.& O.E. September 2015

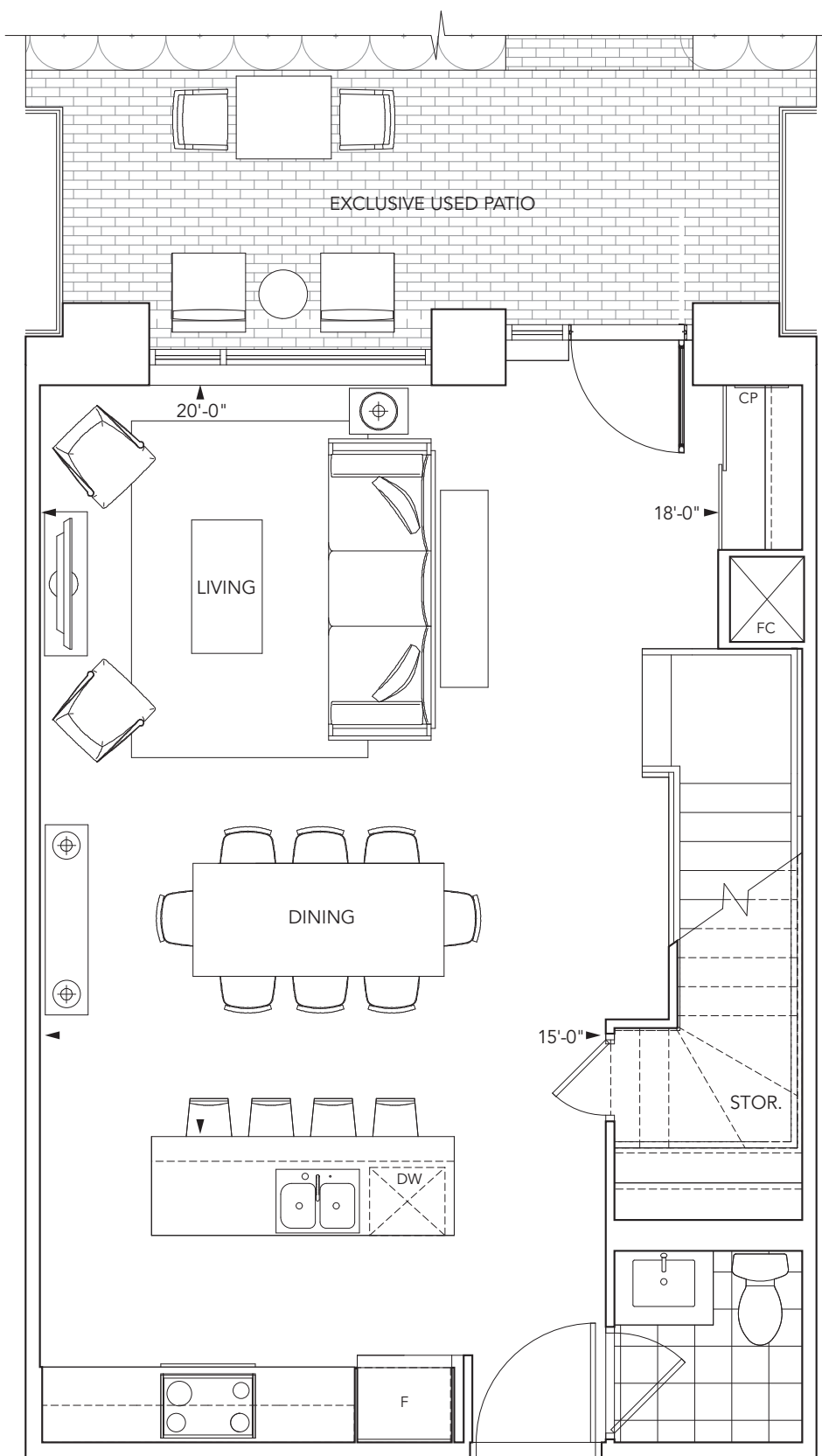


## TOWNHOME 2

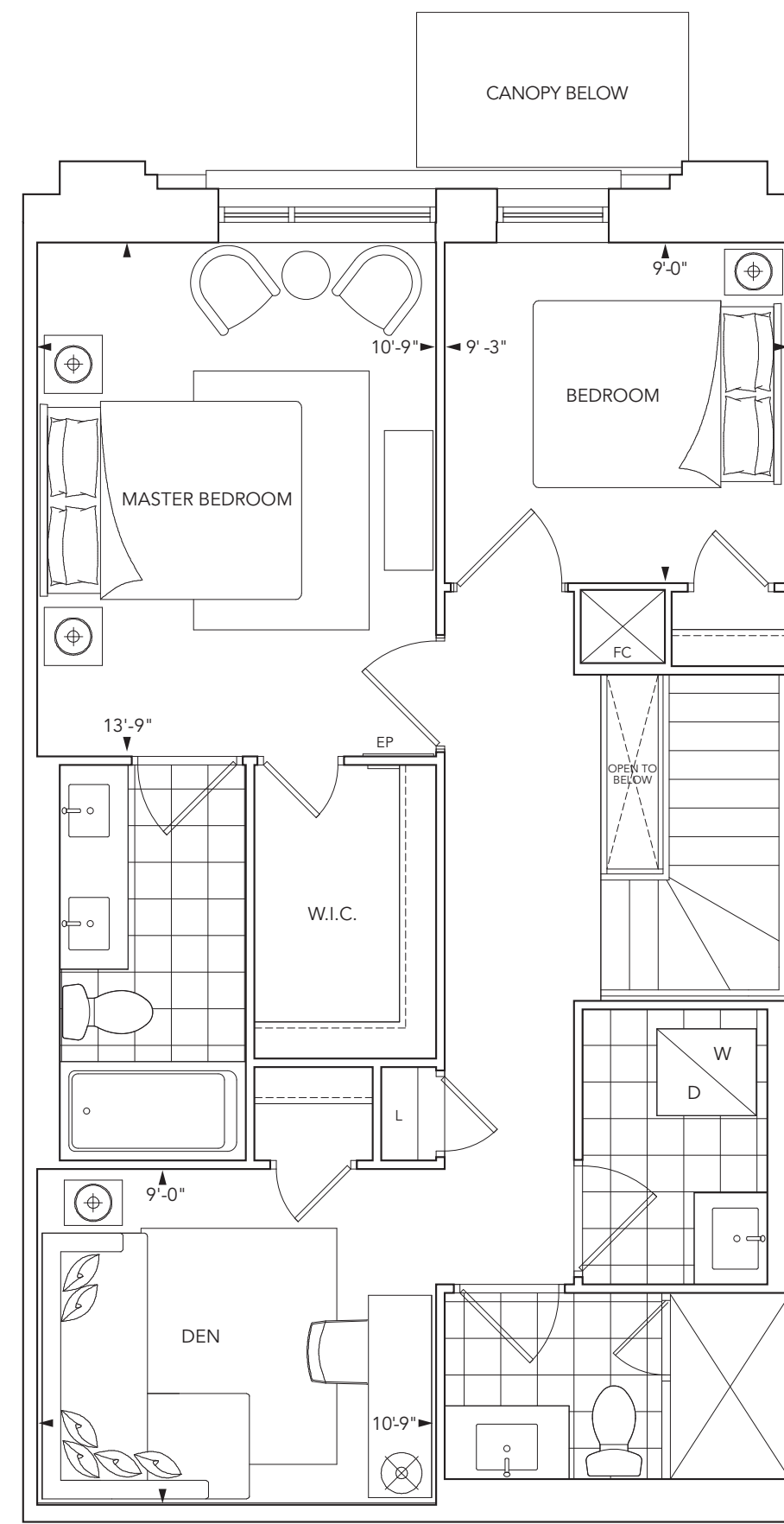
2 bedroom, 2 1/2 bathrooms, living room, dining room, den plus patio



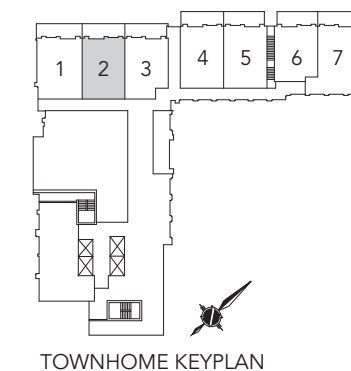
Ground Level Outdoor Patio



Ground Floor



Second Floor



**BLOORVISTA**  
AT ISLINGTON TERRACE



**TOWNHOME 3**

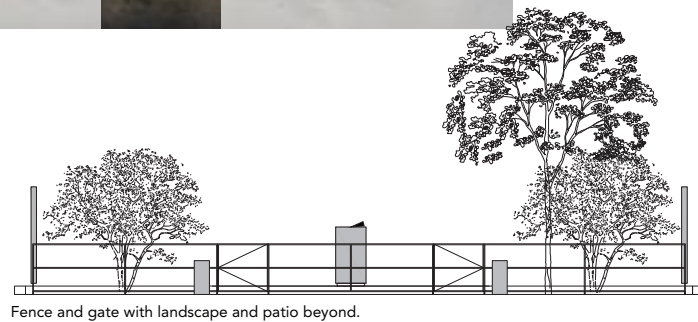
3 bedroom, 2 1/2 bathrooms, living room, dining room, den plus patio

[tridel.com](http://tridel.com)

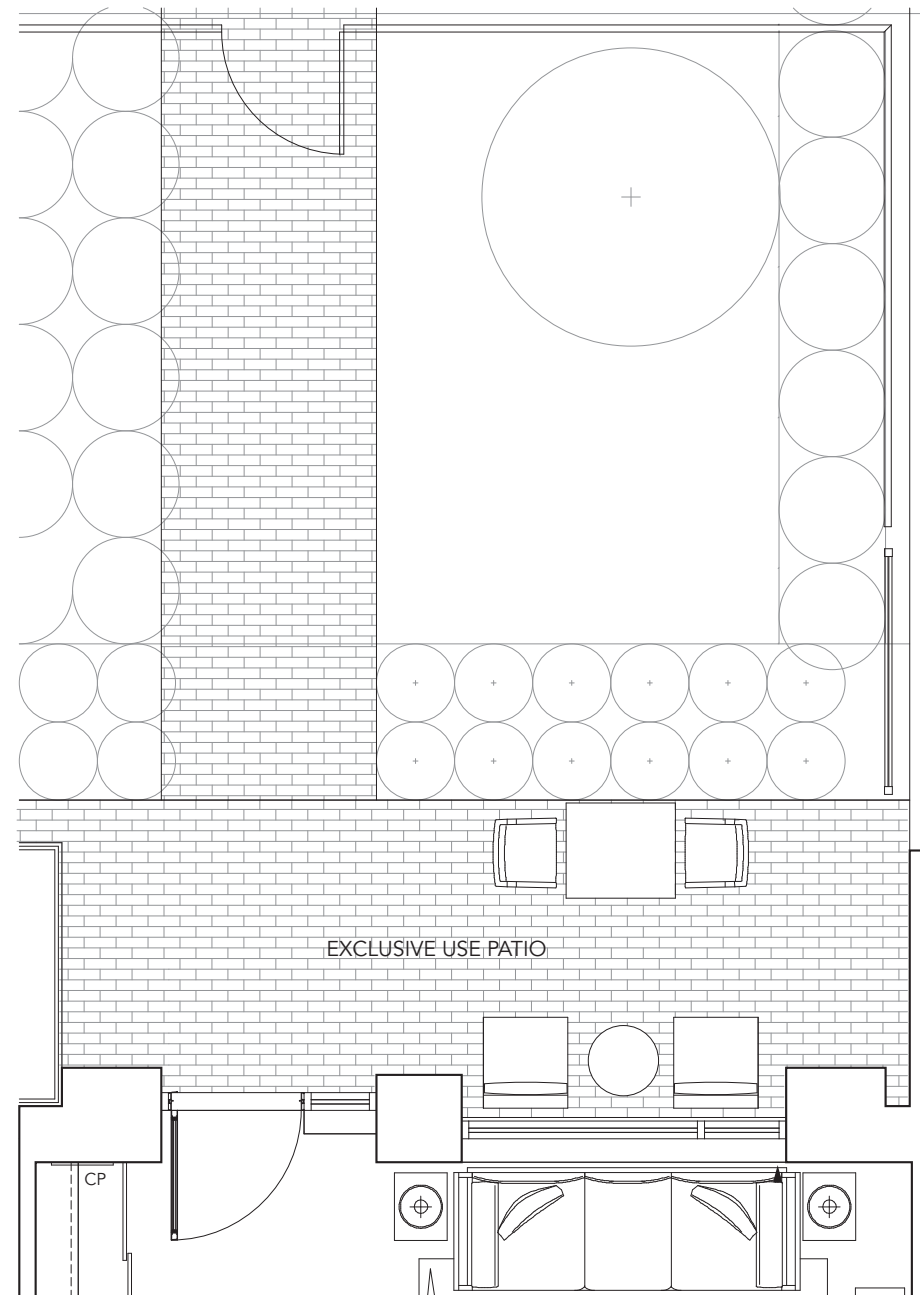


### TOWNHOME 3

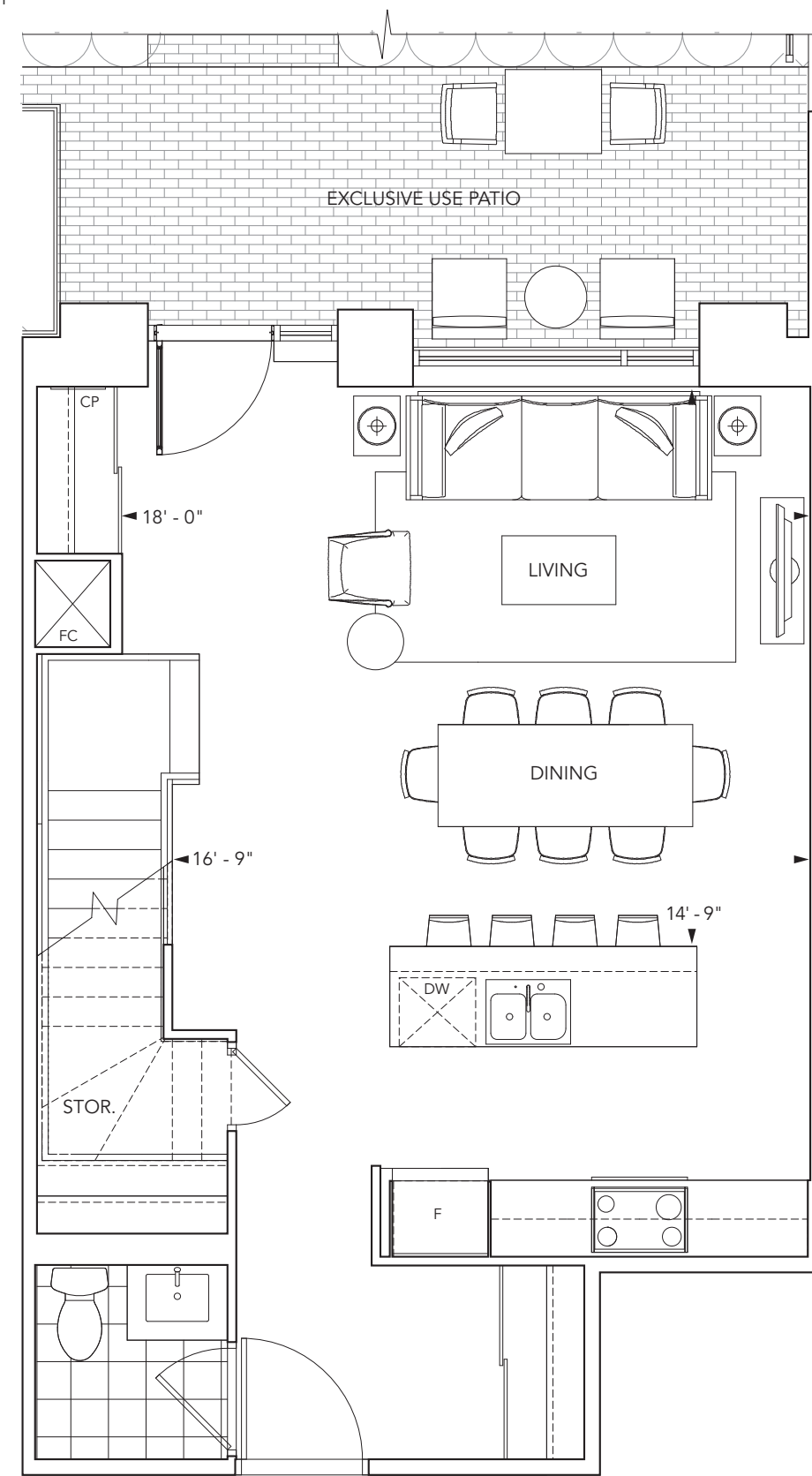
3 bedroom, 2 1/2 bathrooms, living room, dining room, den plus patio



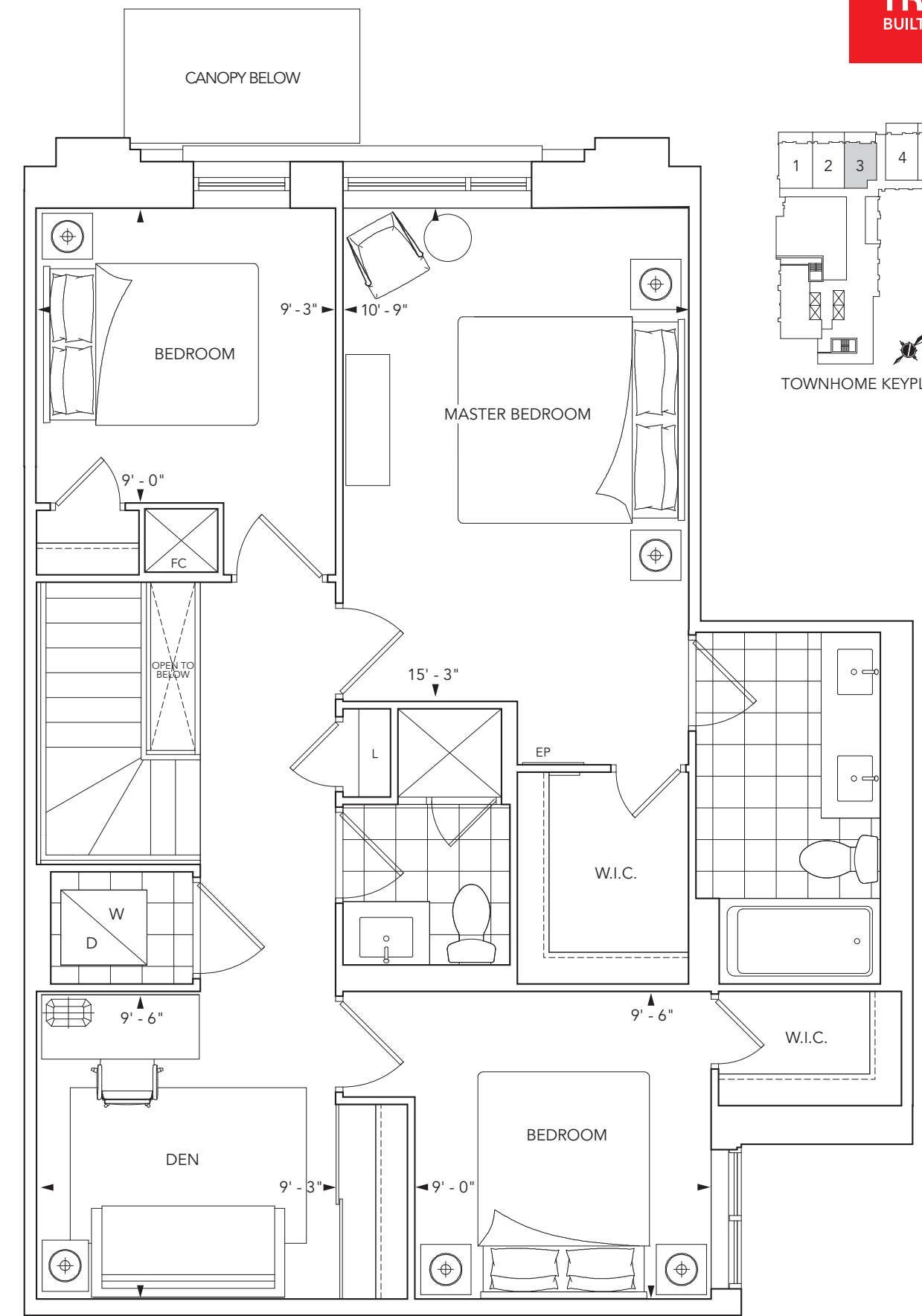
Fence and gate with landscape and patio beyond.



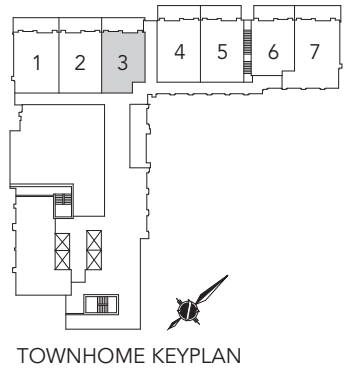
Ground Level Outdoor Patio



Ground Floor



Second Floor



TOWNHOME KEYPLAN

**BLOORVISTA**  
AT ISLINGTON TERRACE



**TOWNHOME 4**

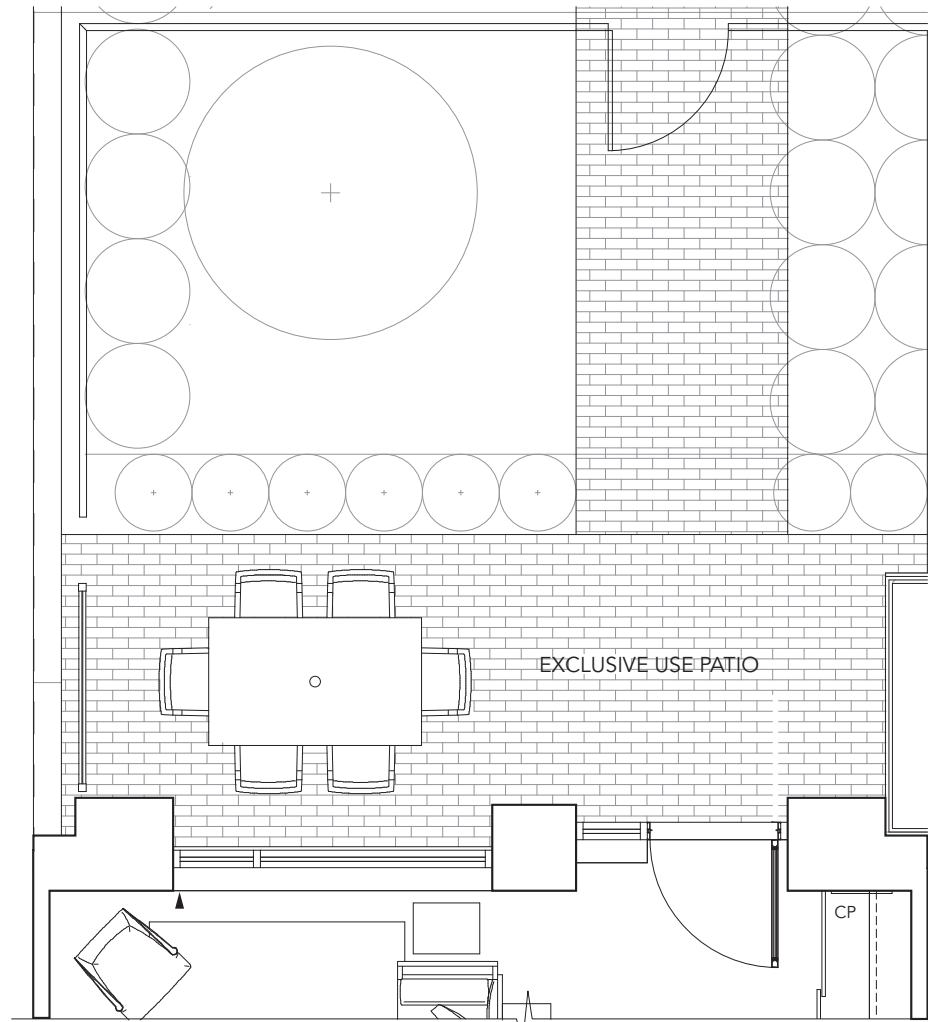
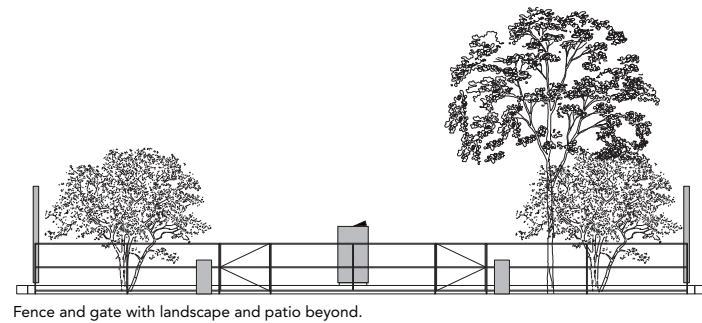
3 bedroom, 2 1/2 bathrooms, living room, dining room, den plus patio

[tridel.com](http://tridel.com)

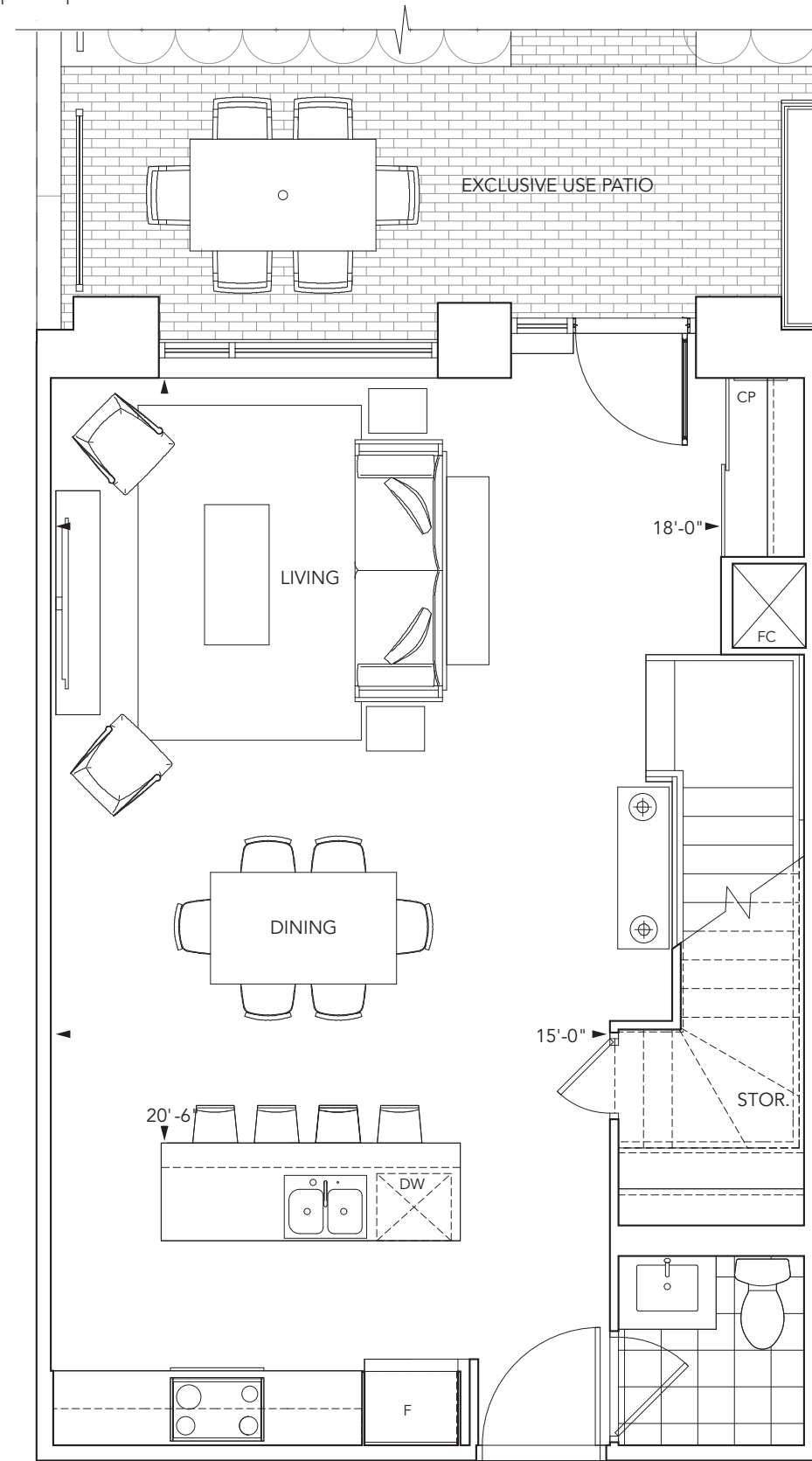


## TOWNHOME 4

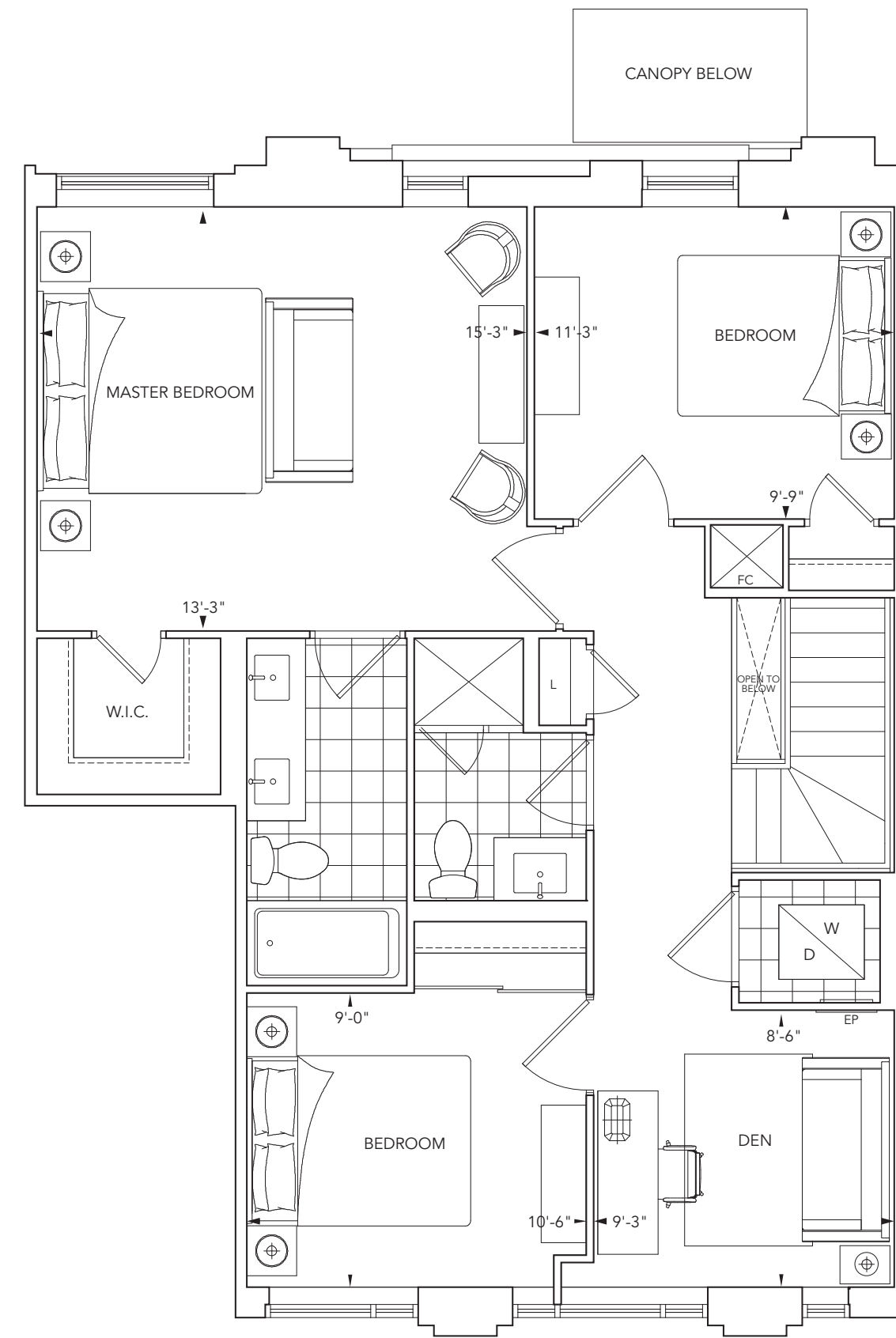
3 bedroom, 2 1/2 bathrooms, living room, dining room, den plus patio



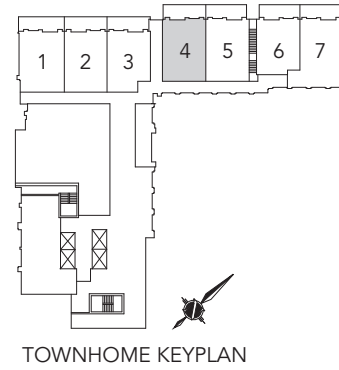
Ground Level Outdoor Patio



Ground Floor



Second Floor



**BLOORVISTA**  
AT ISLINGTON TERRACE



**TOWNHOME 5**

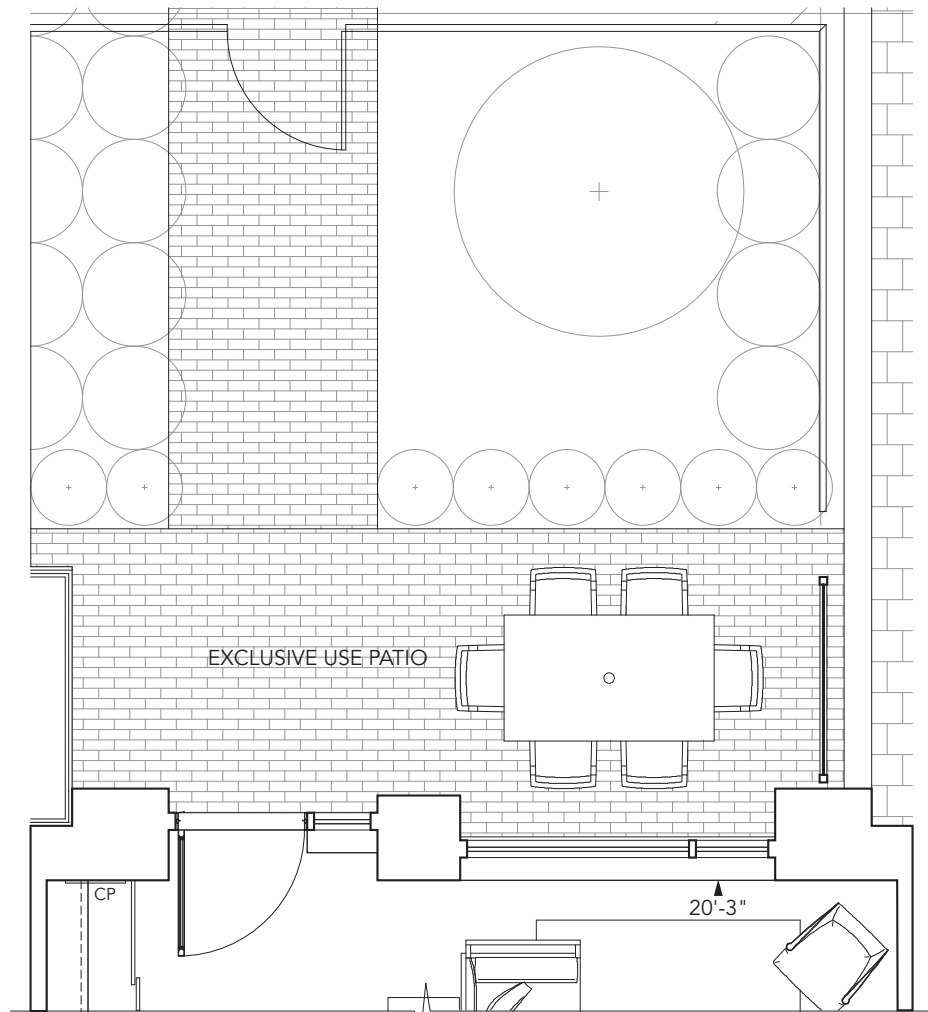
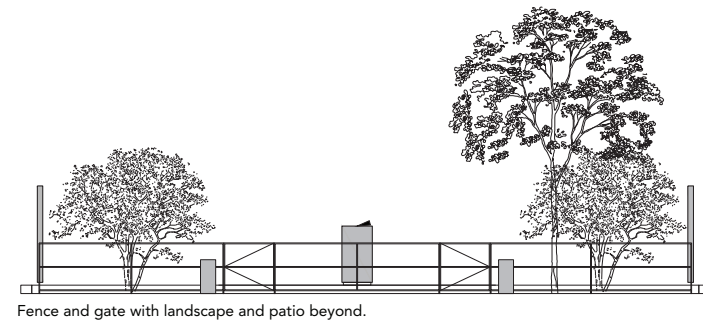
3 bedroom, 2 1/2 bathrooms, living room, dining room plus patio

[tridel.com](http://tridel.com)

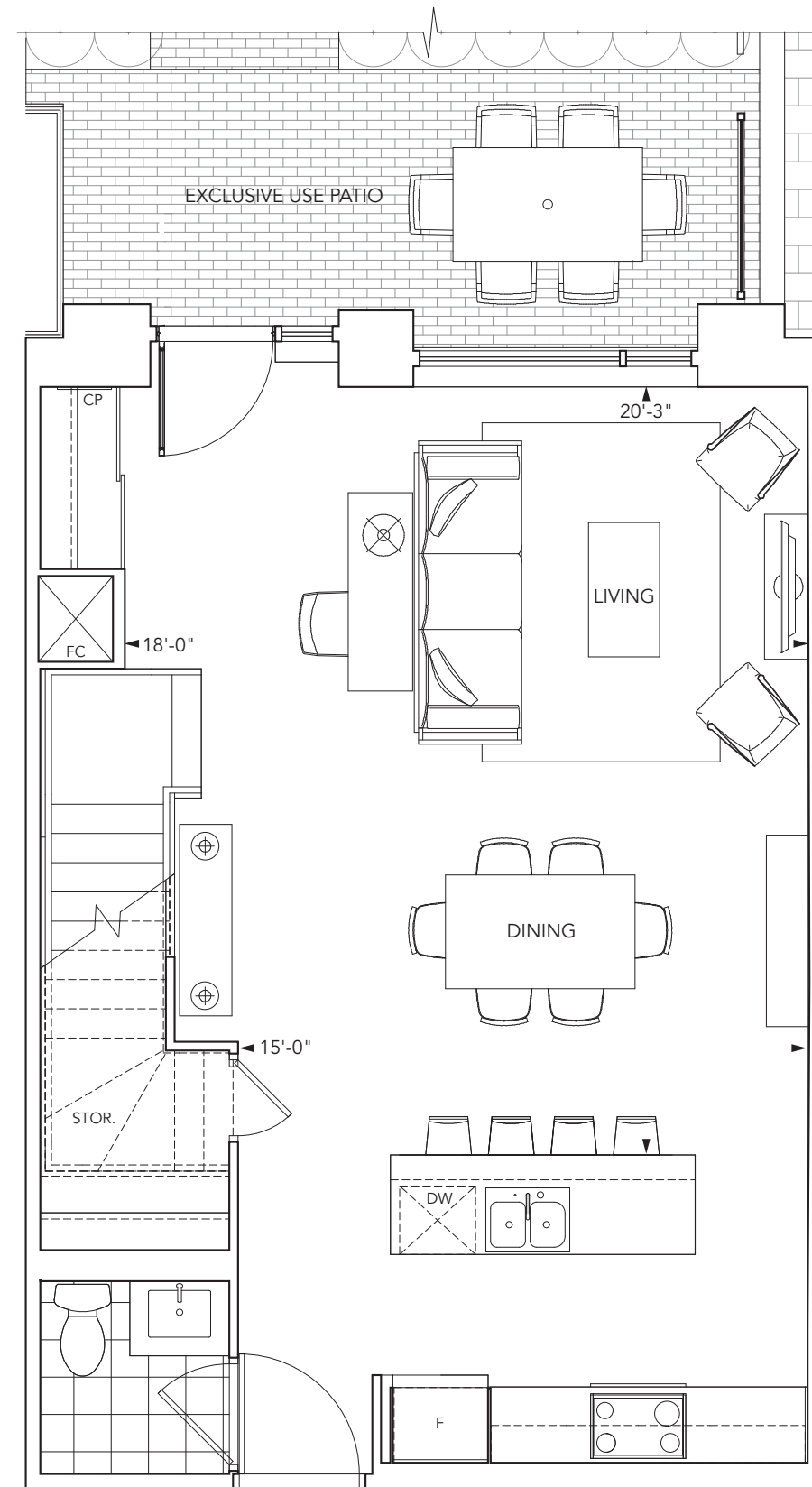


## TOWNHOME 5

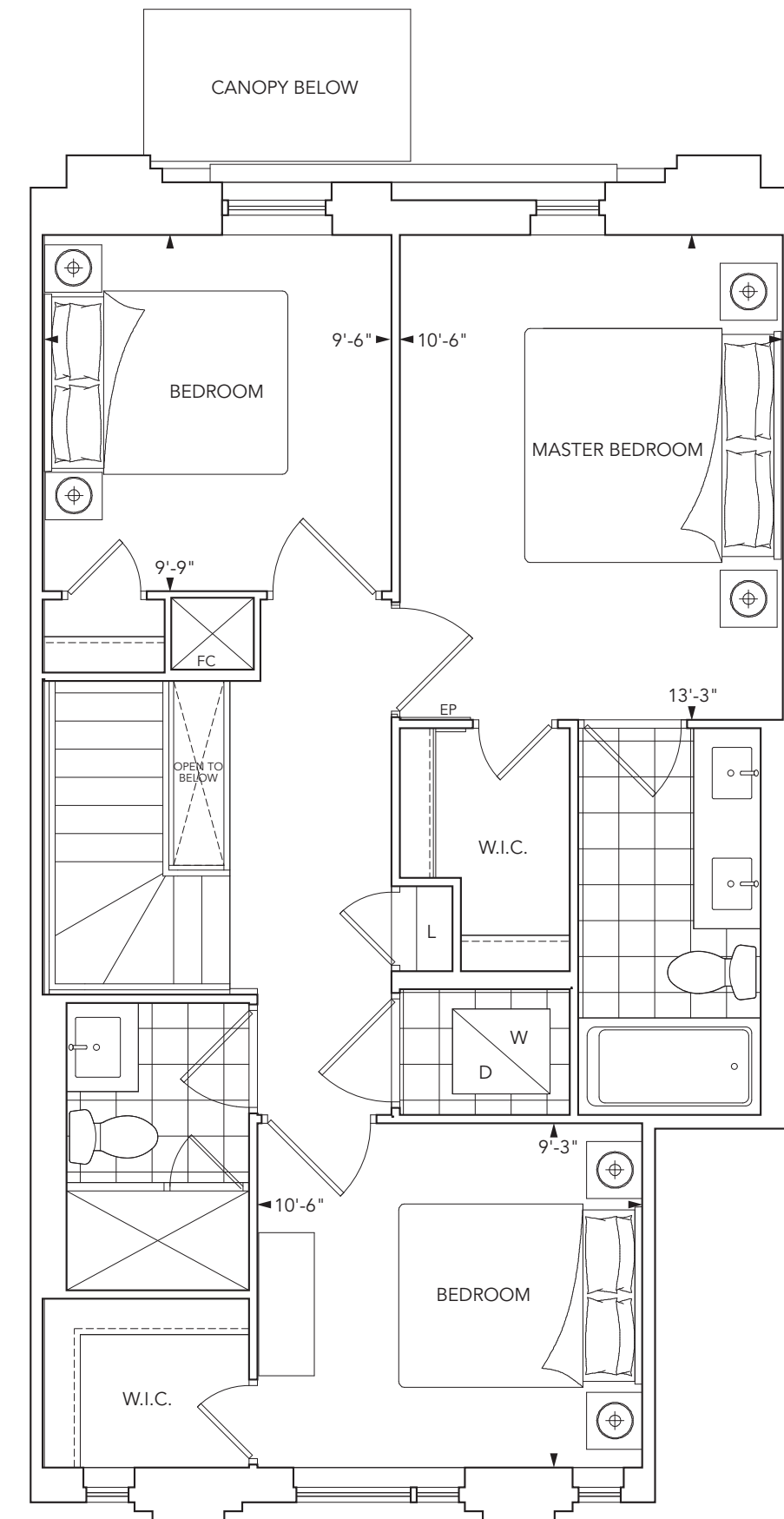
3 bedroom, 2 1/2 bathrooms, living room, dining room plus patio



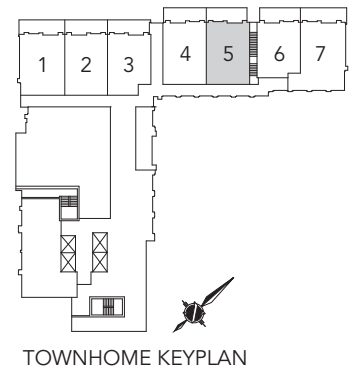
Ground Level Outdoor Patio



Ground Floor



Second Floor



**BLOORVISTA**  
AT ISLINGTON TERRACE



**TOWNHOME 6**

3 bedroom, 2 1/2 bathrooms, living room, dining room plus patio

[tridel.com](http://tridel.com)

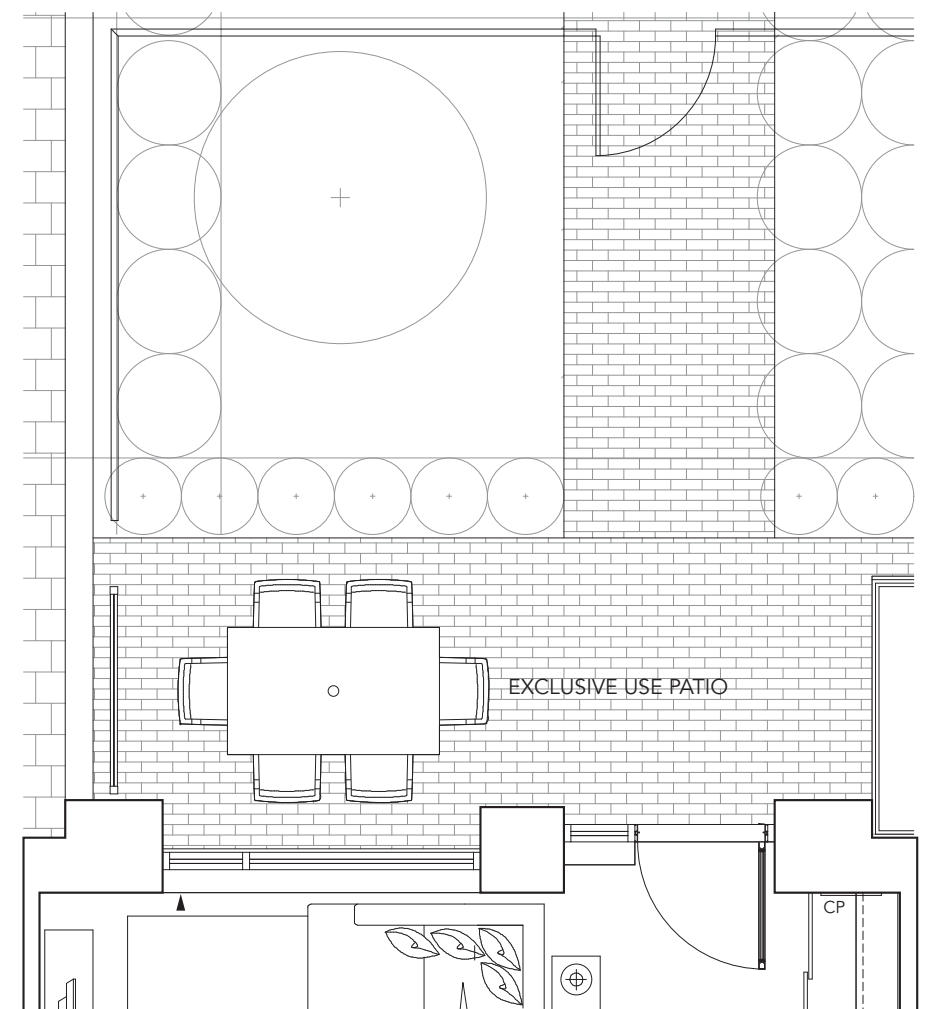


## TOWNHOME 6

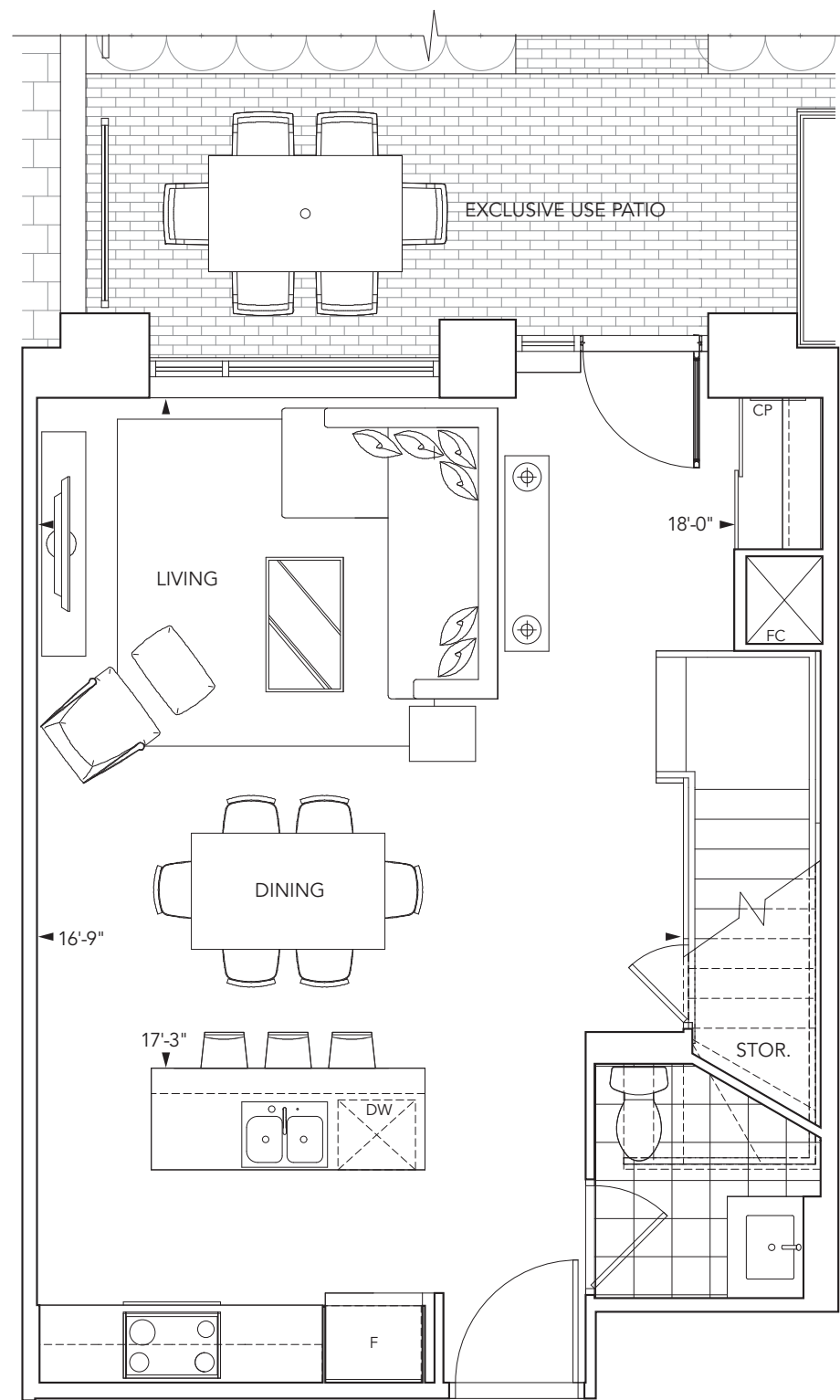
3 bedroom, 2 1/2 bathrooms, living room, dining room plus patio



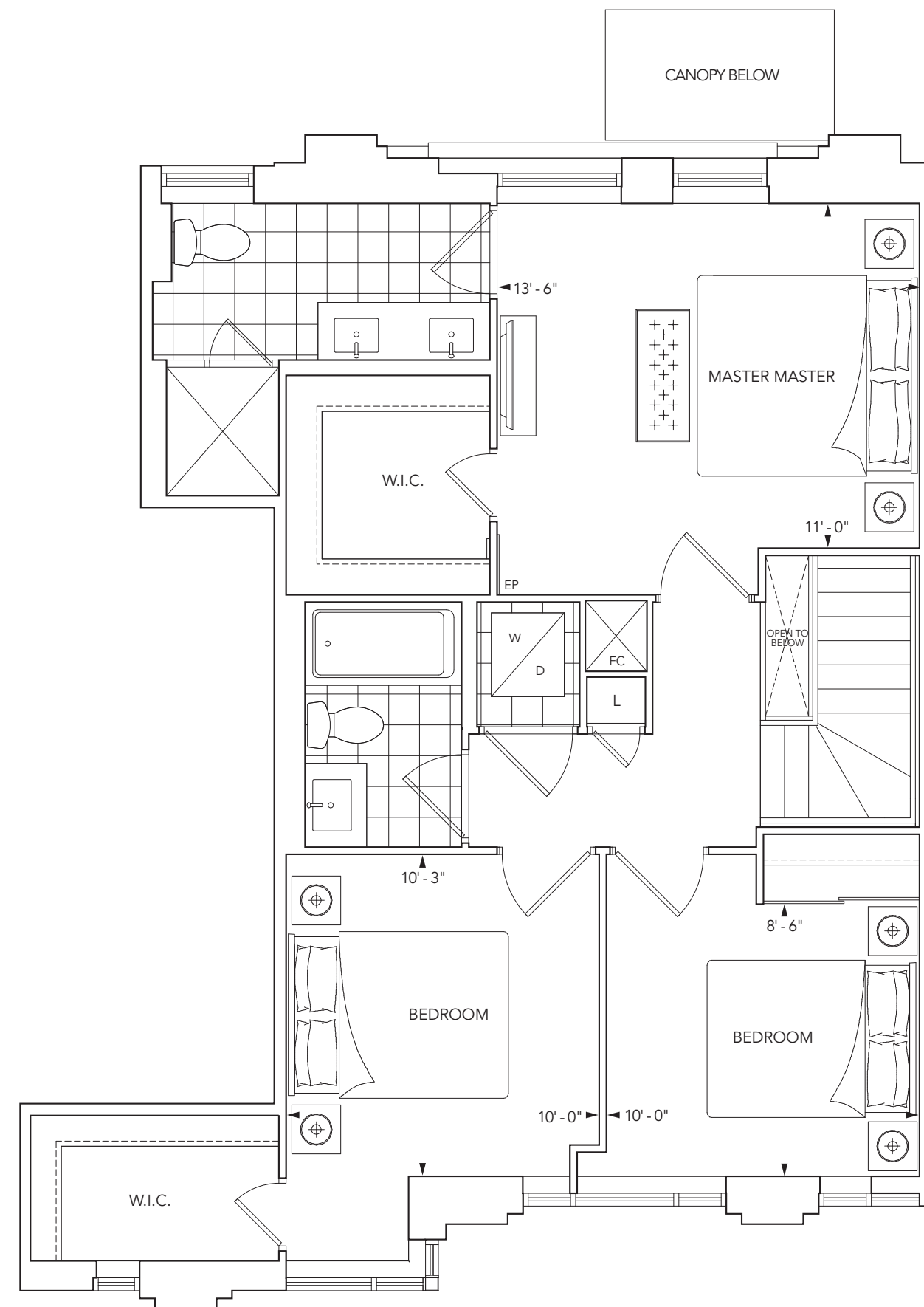
Fence and gate with landscape and patio beyond.



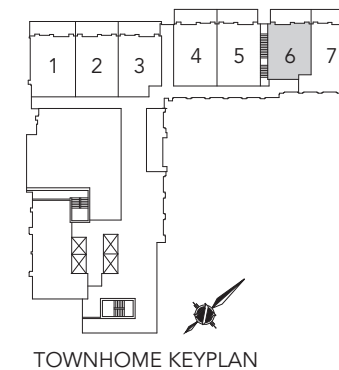
Ground Level Outdoor Patio



Ground Floor



Second Floor



**BLOORVISTA**  
AT ISLINGTON TERRACE



**TOWNHOME 7**

3 bedroom, 2 1/2 bathrooms, living room, dining room plus patio

[tridel.com](http://tridel.com)

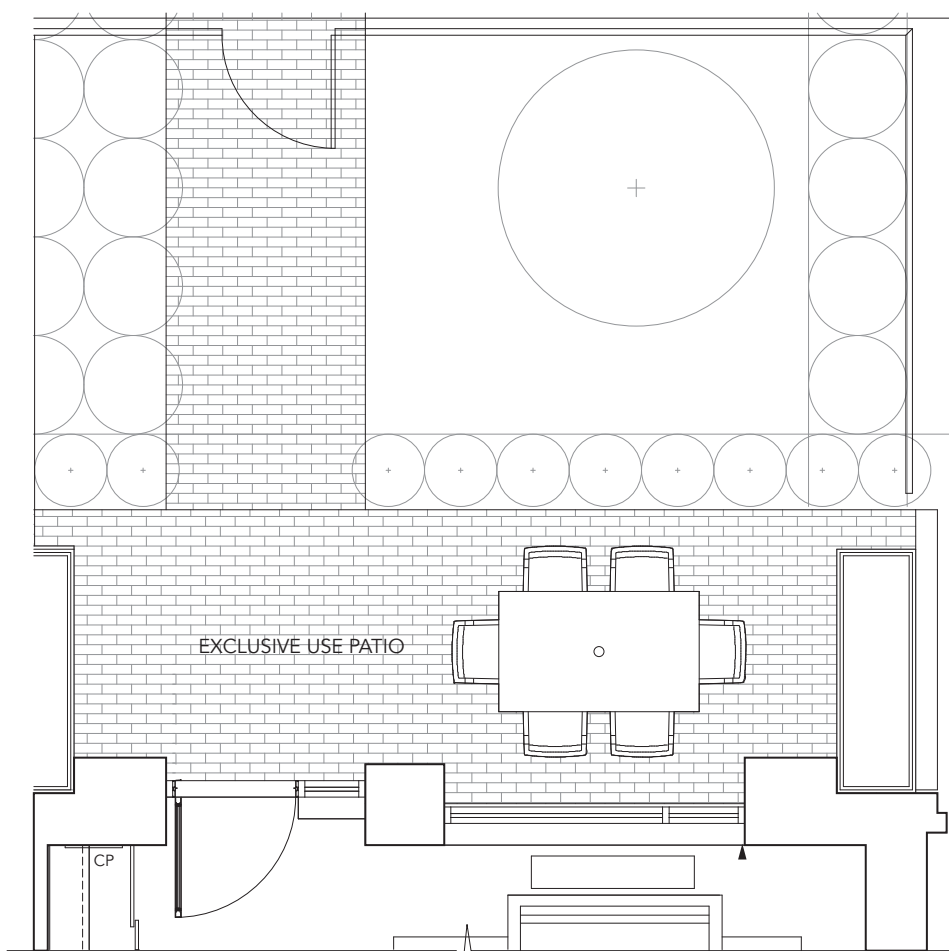


## TOWNHOME 7

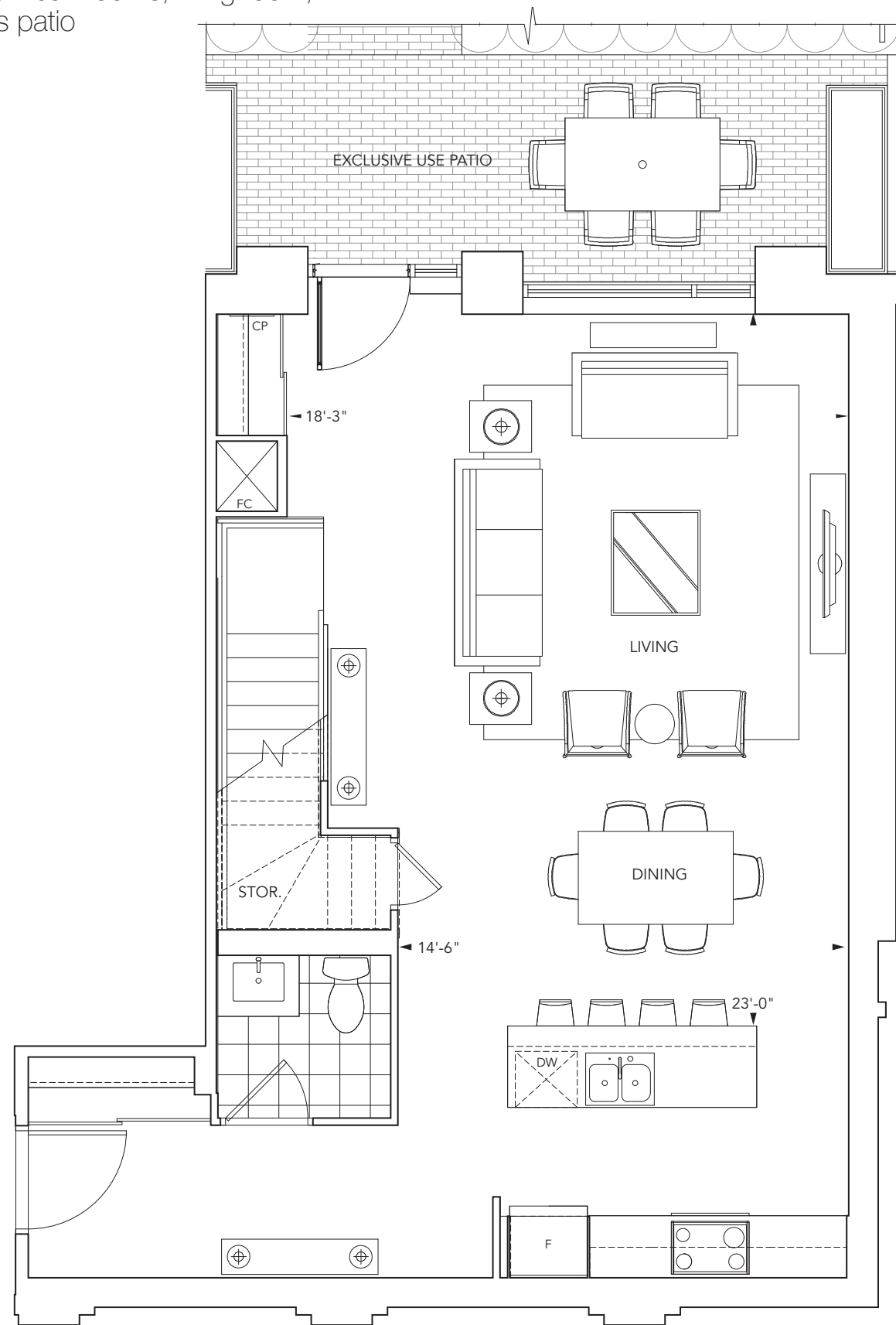
3 bedroom, 2 1/2 bathrooms, living room,  
dining room plus patio



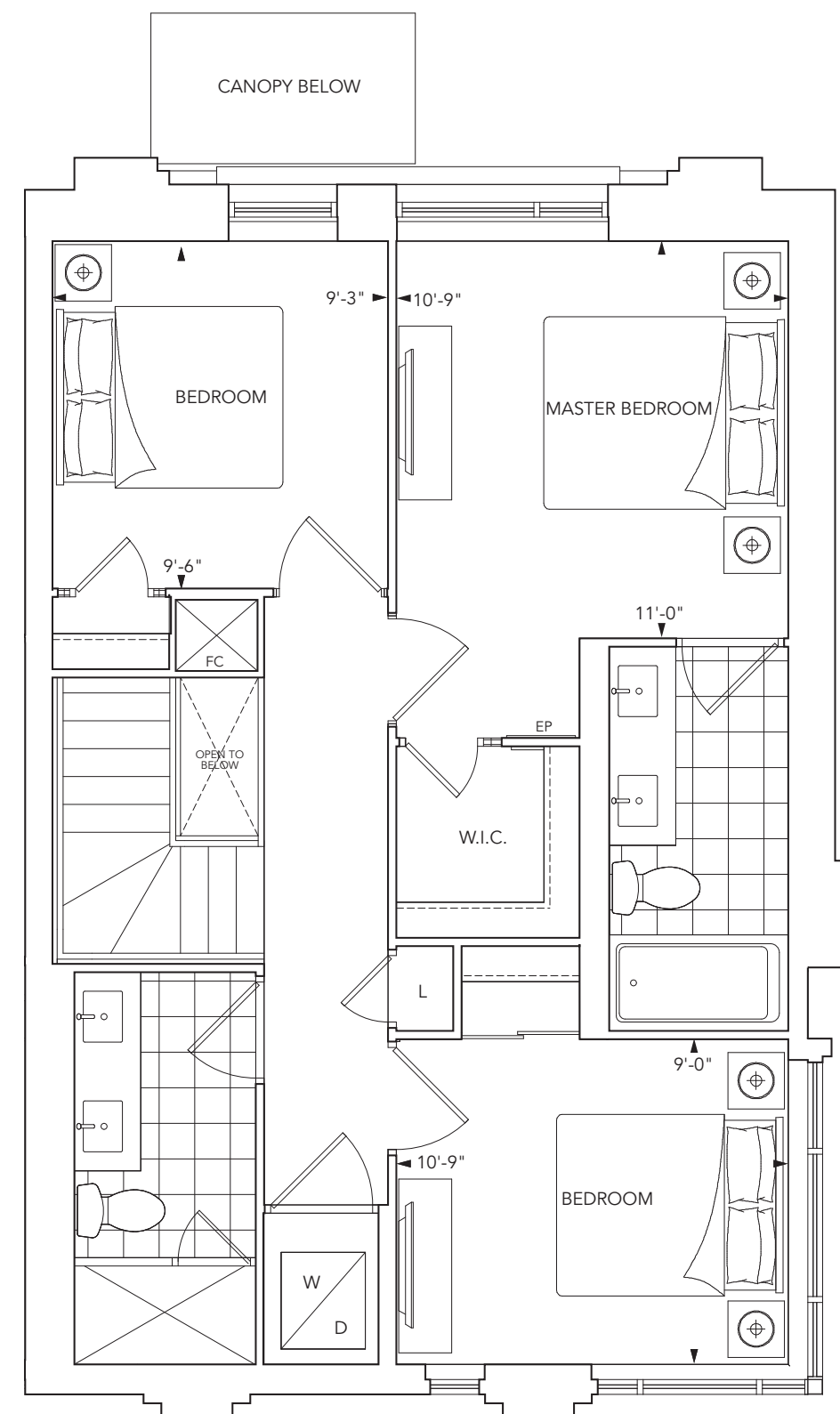
Fence and gate with landscape and patio beyond.



Ground Level Outdoor Patio



Ground Floor



Second Floor

