



# Aquabella Lookbook & Plans



THE BRAND FACTORY®



[tridel.com](http://tridel.com)

**BAYSIDE**  
TORONTO | A HINES MASTER  
PLANNED COMMUNITY.



# AQUABELLA

BAYSIDE TORONTO

LUXURY BY THE LAKE

# AQUABELLA

BAYSIDE TORONTO

LUXURY BY THE LAKE



[tridel.com](http://tridel.com)

**BAYSIDE**  
TORONTO | A HINES MASTER  
PLANNED COMMUNITY.



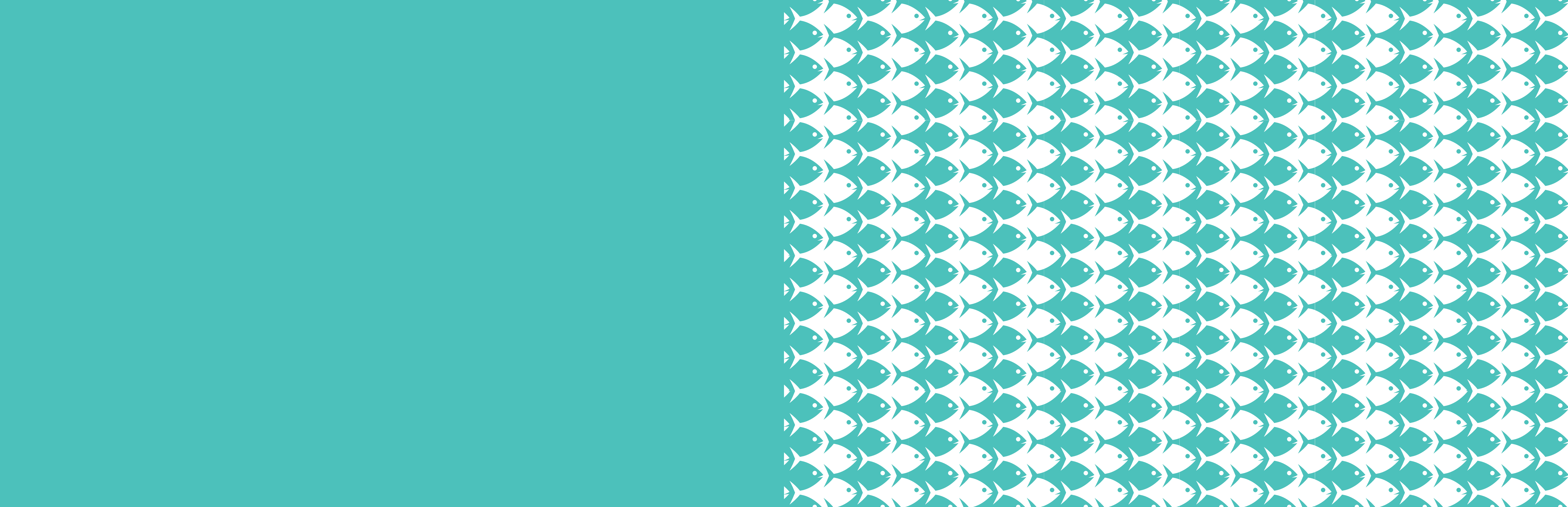
[tridel.com](http://tridel.com)

# AQUABELLA

BAYSIDE TORONTO

**BAYSIDE**  
TORONTO | A HINES MASTER  
PLANNED COMMUNITY.

LUXURY BY THE LAKE





LUXURY BY THE LAKE



L U X U R Y B Y T H E L A K E



AQUABELLA PH2 - MASTER SUITE

L U X U R Y



T H E L A K E



L U X U R Y   B   H E L A K E



L U X U R Y   B Y   T H E   L A K E



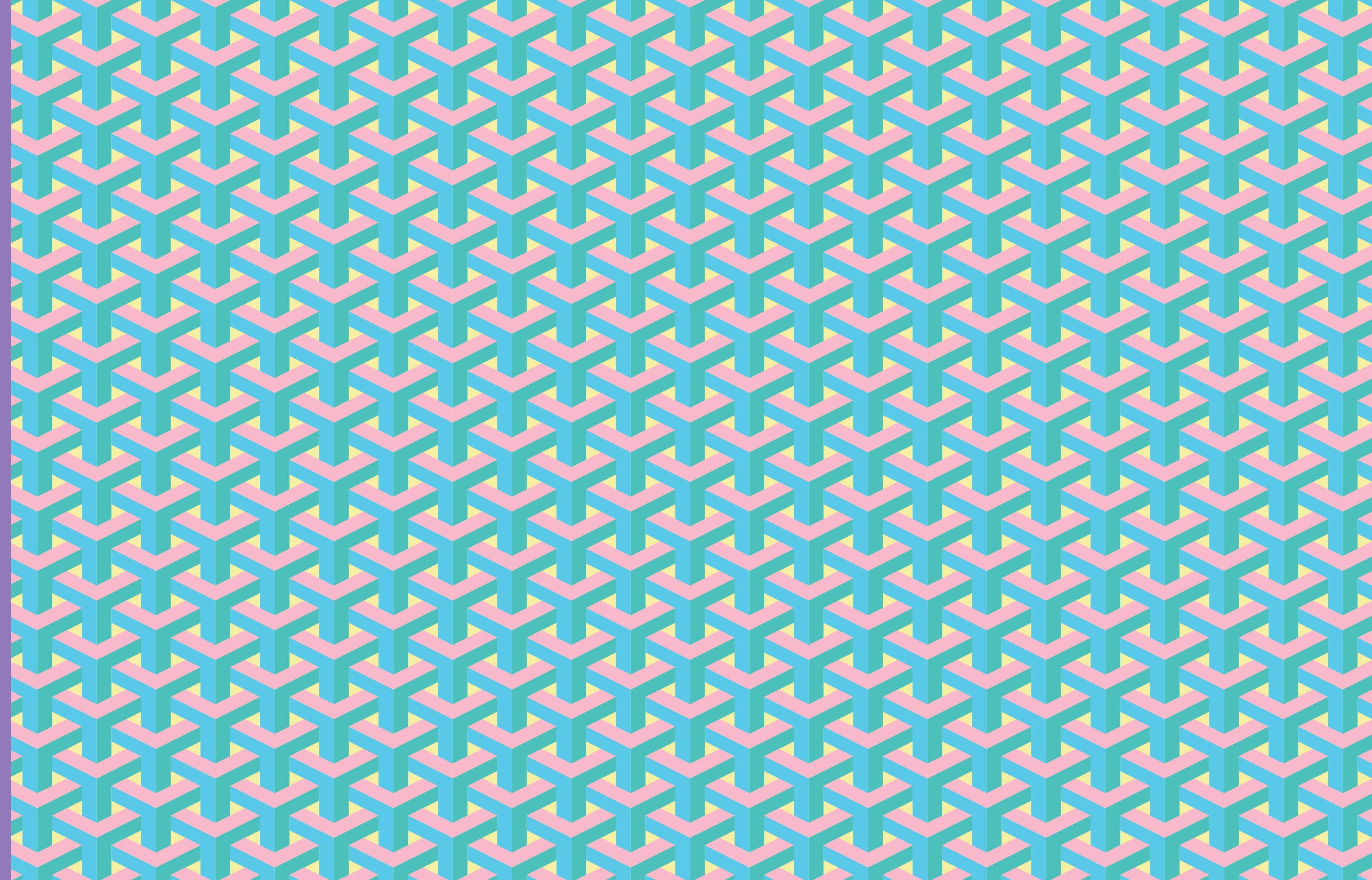
AQUABELLA PH3- LIVING ROOM

L U X U R Y   B Y   T H E   L A K E



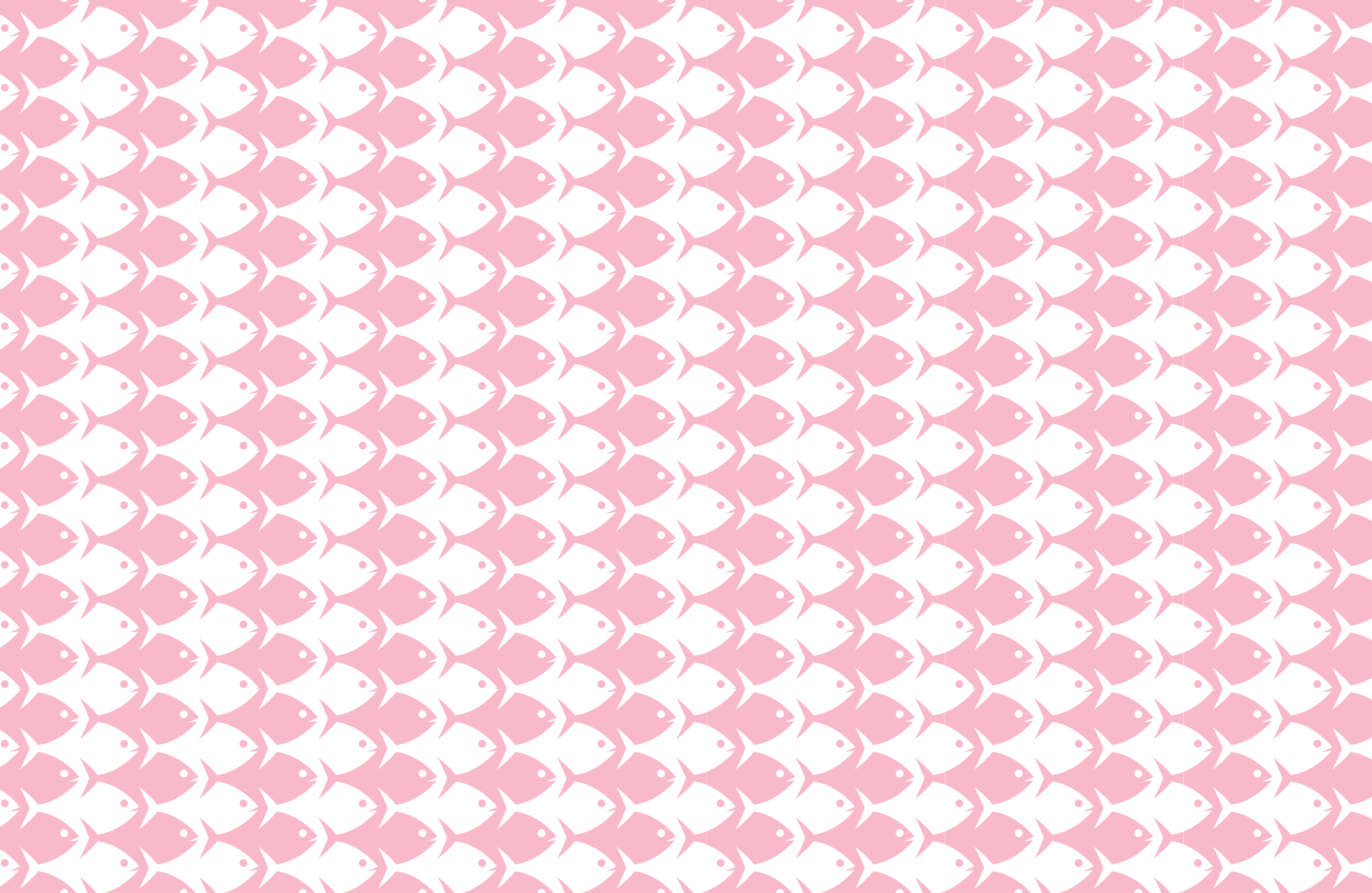
AQUABELLA PH3 - FORMAL DINING ROOM

BUILDING AMENITY PLANS









F L O O R

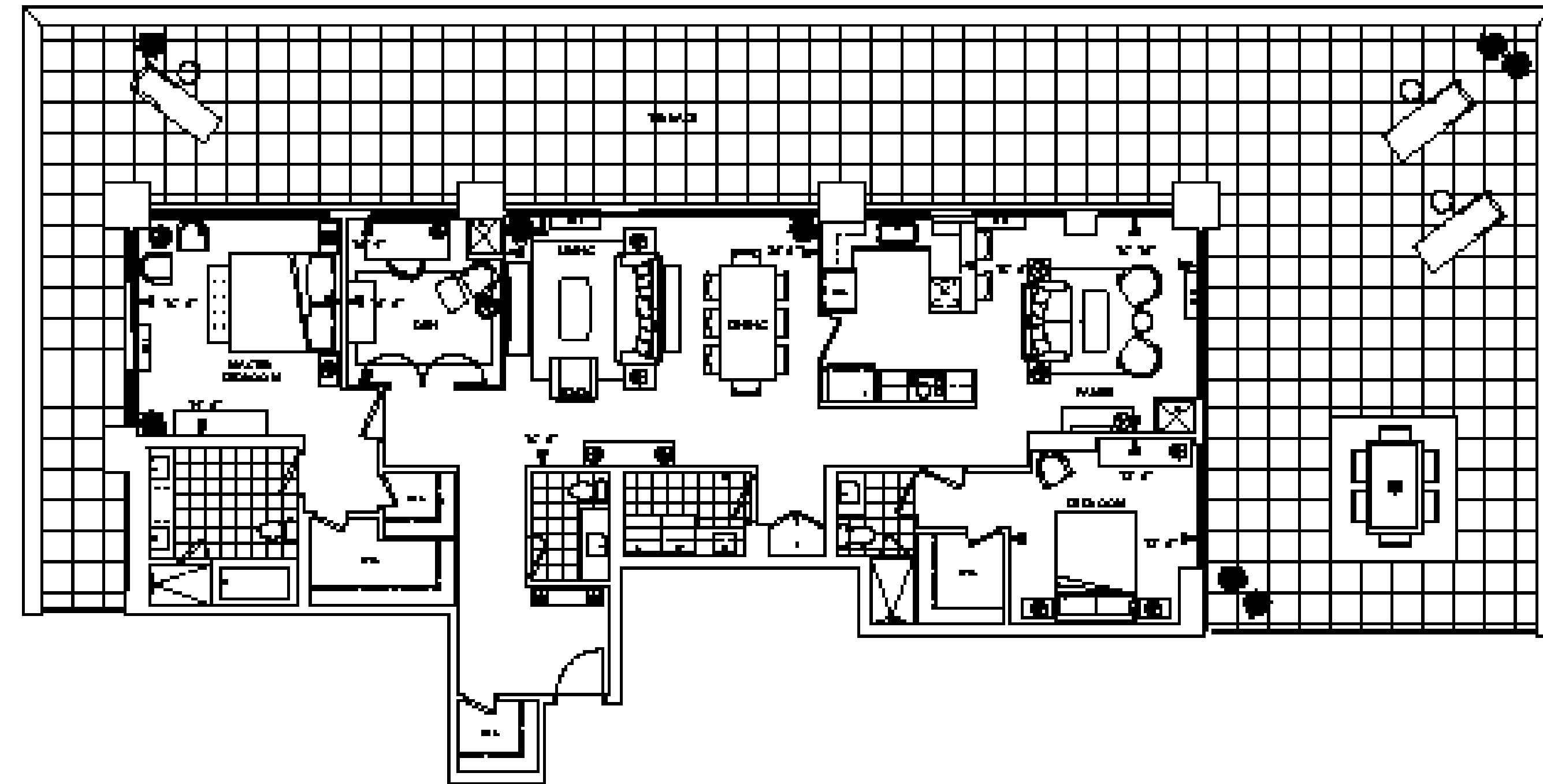
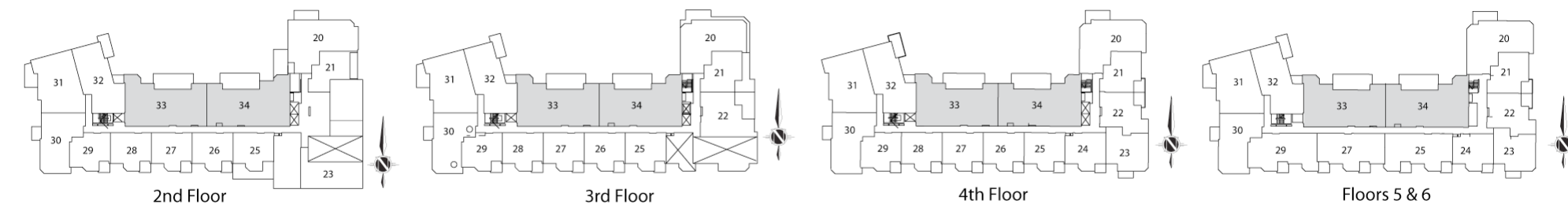


P L A N S

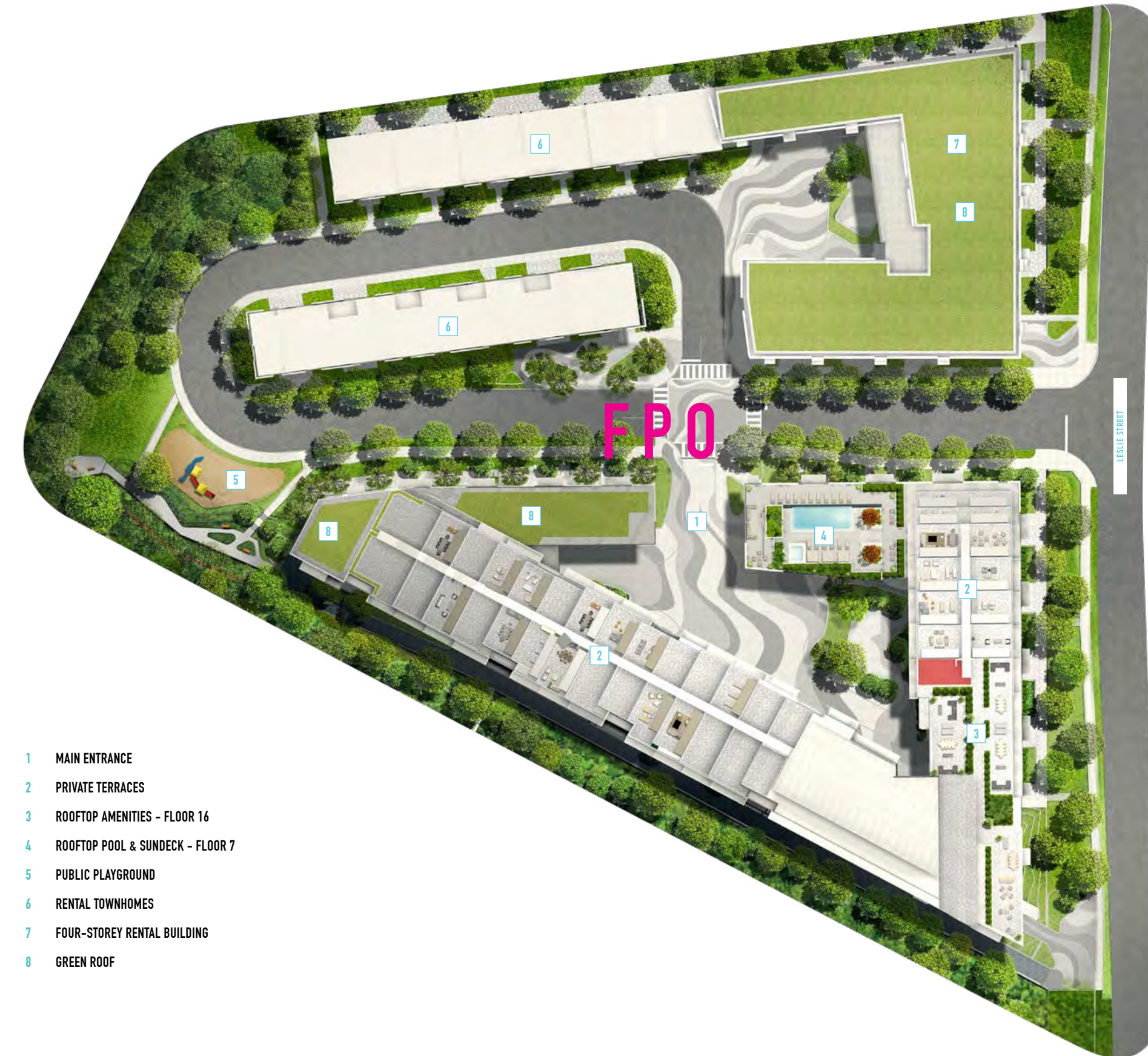


# SUITE 2T+F

2 BEDROOM • 1288 SQ.FT.



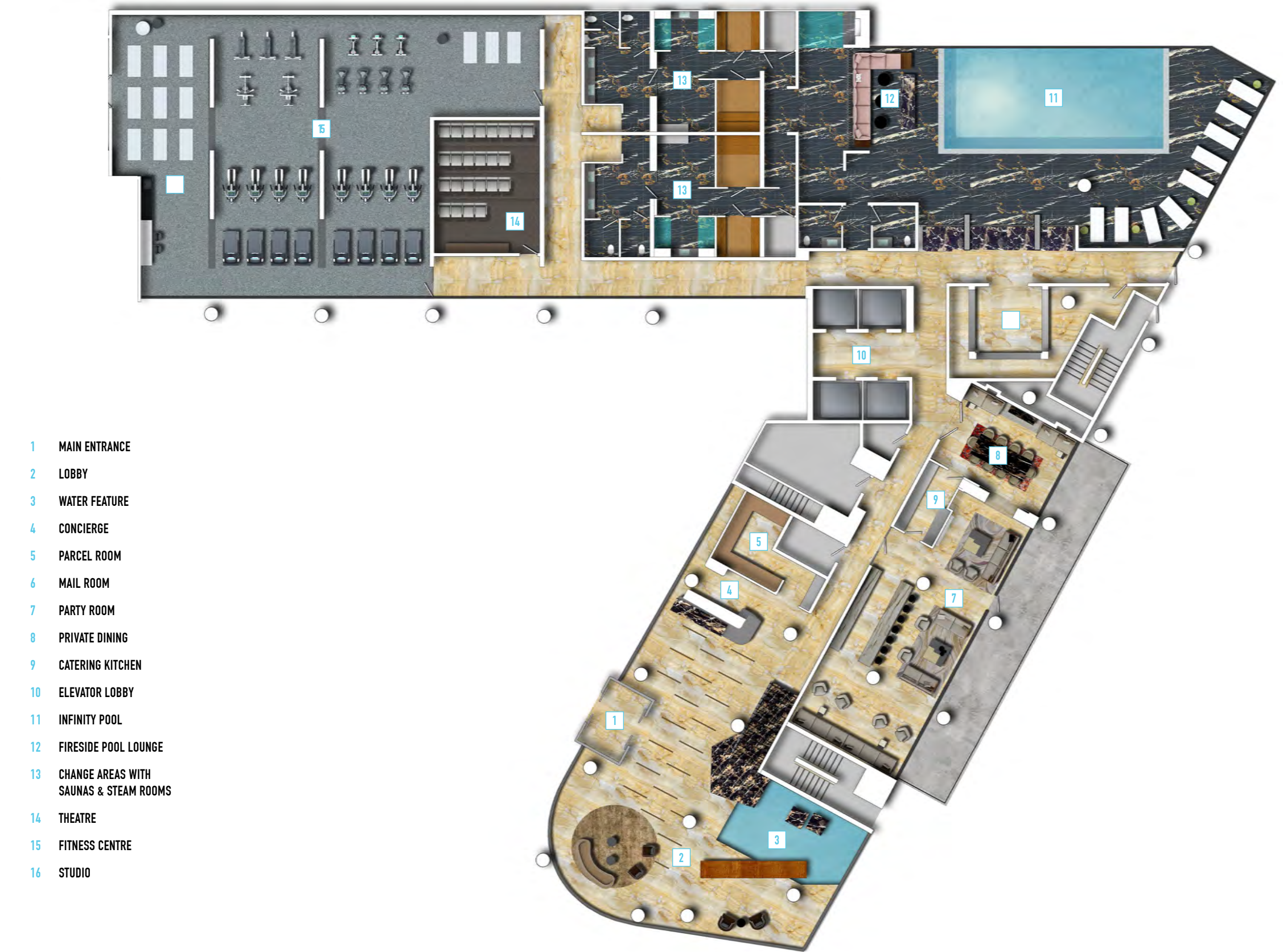
# SITE PLAN



- 1 MAIN ENTRANCE
- 2 PRIVATE TERRACES
- 3 ROOFTOP AMENITIES - FLOOR 16
- 4 ROOFTOP POOL & SUNDECK - FLOOR 7
- 5 PUBLIC PLAYGROUND
- 6 RENTAL TOWNHOMES
- 7 FOUR-STOREY RENTAL BUILDING
- 8 GREEN ROOF



# MAIN FLOOR AMENITIES



- 1 MAIN ENTRANCE
- 2 LOBBY
- 3 WATER FEATURE
- 4 CONCIERGE
- 5 PARCEL ROOM
- 6 MAIL ROOM
- 7 PARTY ROOM
- 8 PRIVATE DINING
- 9 CATERING KITCHEN
- 10 ELEVATOR LOBBY
- 11 INFINITY POOL
- 12 FIRESIDE POOL LOUNGE
- 13 CHANGE AREAS WITH SAUNAS & STEAM ROOMS
- 14 THEATRE
- 15 FITNESS CENTRE
- 16 STUDIO

# 7TH FLOOR POOL



# AMENITIES PLANS



ROOFTOP POOL & SUNDECK  
(FLOOR 7)

- 1 INFINITY POOL
- 2 HOT TUB
- 3 CABANAS
- 4 CHAISE LOUNGES
- 5 FIRE PIT LOUNGE
- 6 OUTDOOR YOGA AREA
- 7 DINING AND BARBEQUES
- 8 CASUAL LOUNGE



UPPER DECK AMENITY TERRACE  
(FLOOR 16)

All dimensions are approximate and subject to normal construction variances. Dimensions may exceed the useable floor area. Sizes and specifications subject to change without notice. Furniture is displayed for illustration purposes only and does not necessarily reflect the electrical plan for the suite. Suites are sold unfurnished. E.&O.E. Tridel®, Tridel Built for Life® and Tridel Built Green. Built for Life® are registered trademarks of Tridel and used under license. ©Tridel 2016. All rights reserved. July 2016.

# SUITE FEATURES & FINISHES

## GENERAL

- Smooth ceiling throughout, painted with a flat latex paint.

## FLOOR COVERINGS

- Plank engineered wood flooring\*\* in foyer, living room, dining room, study\*, hallway\*, family room\*, bedrooms and kitchen/breakfast\*.

## KITCHEN

- Signature kitchen cabinetry\*\* with extended-height upper cabinets, full depth fridge upper cabinet.
- Choice of granite or quartz kitchen countertop and backsplash\*\* with polished double edge and double bowl\* undermount stainless steel sink.
- Architect Series Kitchen Aid Energy Star high efficiency, panel ready dishwasher.
- Architect Series Kitchen Aid Energy Star high efficiency built-in, panel ready approx.
- Architect Series Kitchen Aid 30" cooktop and Architect Series Kitchen Aid built-in combination micro/oven\* tower in stainless steel finish.

## COMMUNICATIONS

- Fiber optic cabling to each suite (complete with in-suite junction box with optical media converter).
- Coaxial cable and Category 5e twisted pair in-suite wiring to living room, study (if applicable) and bedroom(s).
- Bulk internet service: Hybrid Fibre 250 High-Speed internet service (including Rogers Advanced Wi-Fi modem) with download speed up to 250 Mbps and upload speed up to 20 Mbps, with unlimited usage. Note: speed may vary with internet traffic, server gateway/router, computer.

\* denotes availability determined by suite design. \*\* denotes finishes to be selected from the vendor's samples.

All features and finishes subject to change without notice. Illustrations are artist's concept only. Building and view not to scale. Tridel®, Tridel Built for Life®, Tridel Built Green, Built for Life® are registered trademarks of Tridel and used under license. ©Tridel 2016. All rights reserved. E.&O.E. October 2016.

