

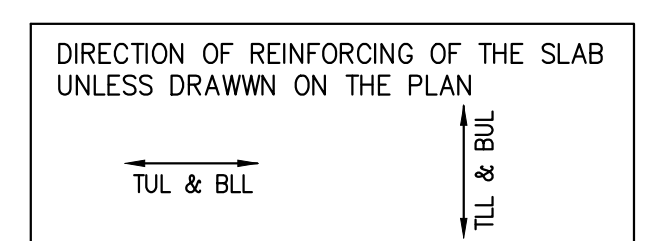
5TH FLOOR FRAMING PLAN

SCALE 1 : 100

- TOP OF SLAB IS AT ELEVATION AS SHOWN ON ARCH. DRAWINGS EXCEPT AS CROSSED AND NOTED ON PLAN.
- CONCRETE STRENGTH AT 28 DAYS SHALL BE:
FOR WALLS AND COLUMNS SEE SCHEDULE
FOR EXT. SLABS 35 MPa
FOR INTERIOR SLABS 25 MPa
FOR BEAMS 35 MPa
CONCRETE EXPOSED TO ELEMENTS SHALL BE 35 MPa WITH 6% TO 8% ENTRAINED AIR.
- FLOOR SLABS ARE DESIGNED FOR FOLLOWING LOADING CONDITIONS :

	S.I.D.	L.L.
STAIRS & BALCONIES	0.50 KPa	4.80 KPa
LOCKERS & STORAGE *	1.30 KPa	4.80 KPa
RESIDENTIAL	1.3 KPa	1.9 KPa
TOILETS	1.30 KPa	2.40 KPa
TERRACES	5.0 KPa	4.80 KPa

- MINIMUM YIELD STRESS FOR REINFORCING STEEL SHALL BE 400 MPa.
- TEMPERATURE REINFORCING FOR : 200 SLAB IS 108250, 230 SLAB IS 108230.
- NO OPENINGS LARGER THAN 300mm x 300mm ARE ALLOWED IN SLAB OTHER THAN THOSE SHOWN ON DRAWINGS.
- SEE TYPICAL DETAILS ON DRAWINGS S-001 TO S-005.
- SEE GENERAL NOTES ON DRAWING S-001.
- REFER TO ARCH. DRAWINGS FOR SLOPES OF SLAB.
- FOR COLUMN & WALL SCHEDULE SEE DRAWINGS S-301 TO S-306.
- COORDINATE BEAM DEPTH AT DOOR OPENINGS WITH ARCH. DRAWINGS.
- EXTEND TEMP. REINF. TO END OF BALCONIES/OVERHANGS.
- TOP BARS TERMINATING AT EDGE OF SLAB TO HAVE 180° HOOK.



5TH FLOOR BEAM SCHEDULE (f'c=35MPa)

MARK	WIDTH	DEPTH	REINFORCEMENT		STIRRUPS		REMARKS
			BOTTOM CONT.	TOP CONT. "A" BARS	SIZE	TYPE	
BM-1	500	500	6-25	4-25	10	10150, @300	ADD 1-15HEF

Jablonsky, Ast and Partners
CONSULTING ENGINEERS
1120 LESLIE STREET
DOR MILLS, ON, M3C 2K5
TEL: 416-447-7400 FAX: 416-447-2711
E-mail: jpa@ast.on.ca



FIRST FLOOR ELEV. 93.60m

NO.	ISSUED / REVISED	DATE
1	ISSUED FOR PERMIT	2014-05-03
2	RE ISSUED FOR PERMIT	2014-07-01
3	ISSUED FOR FORMING TENDER	2014-08-27
4	CONSTRUCTION REVIEW	2014-09-23
5	RE ISSUED FOR PERMIT	2015-01-07
6	ISSUED FOR CONSTRUCTION	2015-03-11
7	UPDATED - P.C.	2015-04-03
8	UPDATED - P.C.	2015-05-01
9	ISSUED FOR B.P.	2015-07-01
11	ISSUED FOR B.L.I	2015-11-04

ALEXANDRA PARK - BLOCK 11
TORONTO, ONTARIO

Project no: 13015
Scale: 1:100
Drawn by: H.W.
Reviewed by: H.P.
Date stamped: MARCH 2014