



MCW Consultants Ltd.

Site Instruction

Date: April 10, 2017

207 Queen's Quay West, Suite 615
Toronto, ON
M5J 1A7

Phone (416) 598-2920
Fax (416) 598-5394
www.mcw.com

Project Name: The Residences of 10 York
Client: Tridel
To: Tridel
Attention: Marius Hirboca

Project No.: 8503
SI No.: M 035
Page No.: 1 of 1
Office: Toronto
From: Pol Malabanan

Distribution: **Tridel:**
Vince Mirarchi
Wallman Architects
Sarah Davie
MCW Consultants Ltd
Michael Hunter
Pol Malabanan
Al Medeiros
Sunanda Perera

Provide itemized labour, equipment and material costs for Work listed below. Do not proceed with any of the listed Work prior to issuance of signed Change Order.

Title: CCU and Security Room HVAC Revisions

Mechanical Drawings:

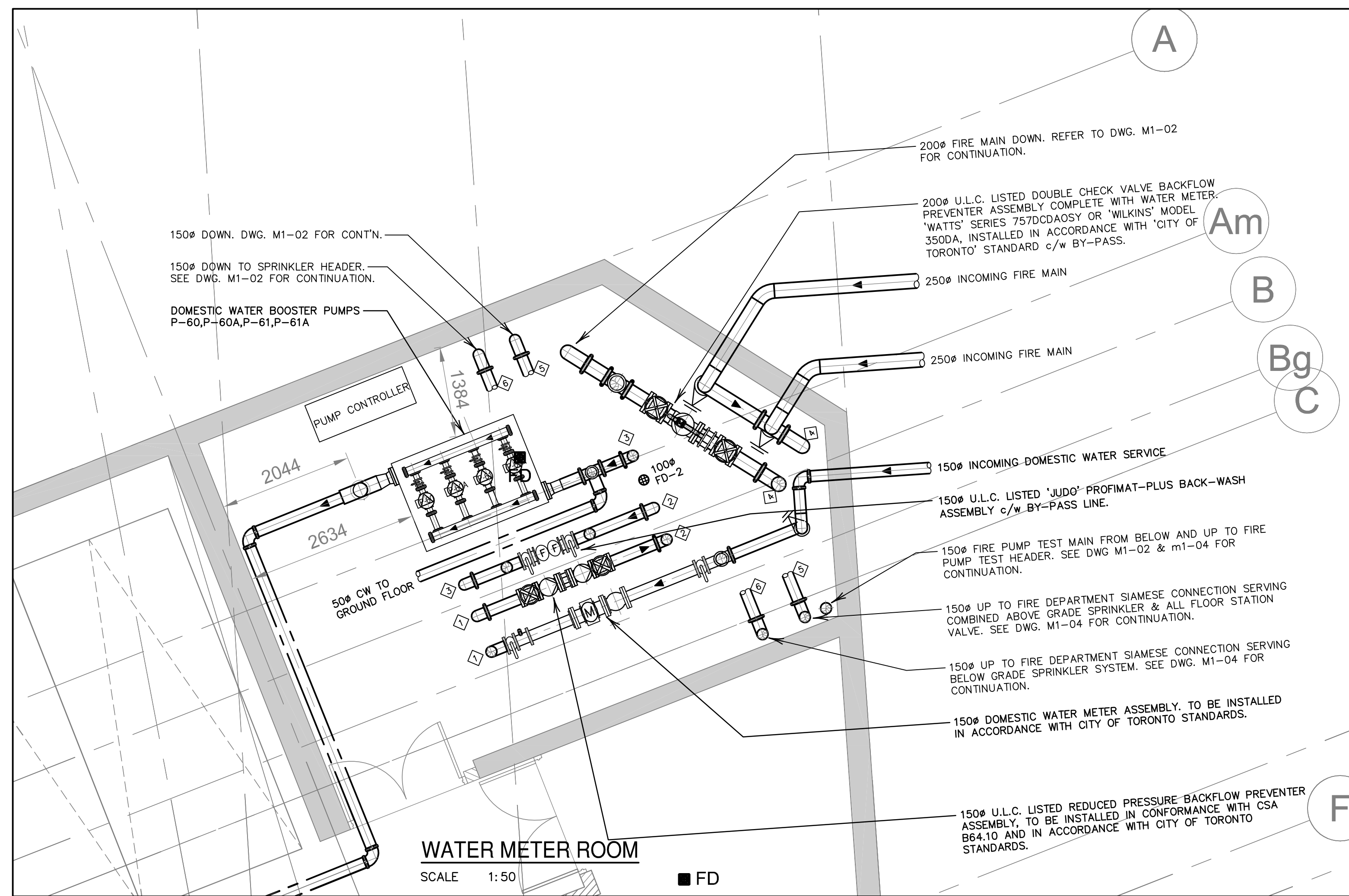
Drawing #	Issued	Items
M1-03	Yes	<ul style="list-style-type: none"> Deleted exhaust fan EF-41 & EF-41A including all its associated ductworks and intake/exhaust grilles as shown. Provided split-cooling system AC-12 & AC-13 and ACCU-12 & ACCU-13 in two (2) CCU Rooms as shown.
M1-04	Yes	<ul style="list-style-type: none"> Deleted exhaust fan EF-75 including its all associated exhaust ducts and grille as shown. Deleted 150x150 open-ended duct c/w bird screen as shown. Deleted two (2) 200x150 make-up air duct c/w Type `E' grille as shown. Provided split-cooling system AC-11 and ACCU-11 in Security Room area as shown.

ME Schedules: N/A

Drawing #	Issued	Items
ME-03	Yes	<ul style="list-style-type: none"> Deleted exhaust fans EF-41, EF-41A & EF-75 as shown.
ME-06	Yes	<ul style="list-style-type: none"> Added split cooling system AC-11/ACCU-11, AC-12/ACCU-12 and AC-11/ACCU-11 as shown.

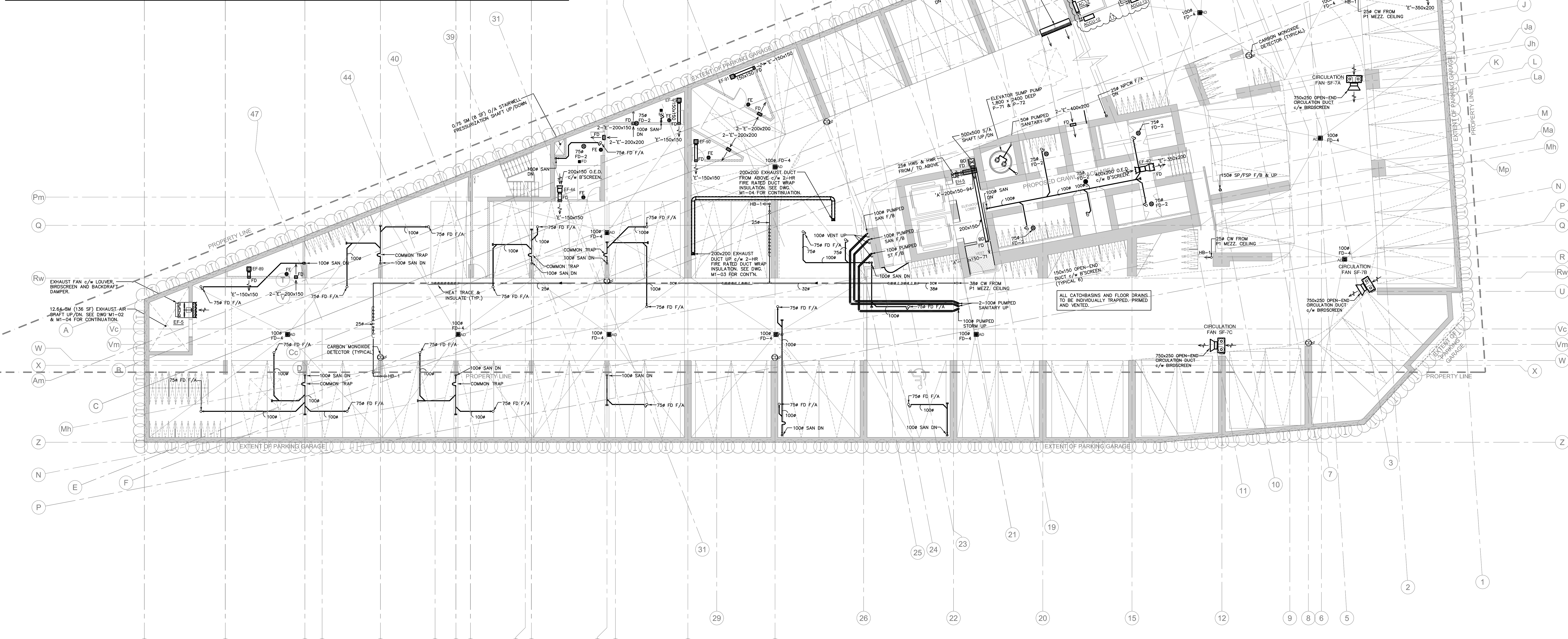
Reason for change: Client request.

End of SI-M035



WATER METER ROOM

SCALE 1:50 ■ FD



MCW
MCW Consultants Ltd.
 207 Queen's Quay West, Suite 615, Toronto, ON, M5J 1A7
 E-Mail: mcw_tor@mcw.com www.mcw.com
 Tel: 416-598-2920 Fax: 416-598-5094
 Toronto Vancouver Winnipeg Moncton Ottawa Halifax
 Dauphin Kelowna Trail Saint John



No.	Issuance	Date	No.	Issuance	Date
1	ISSUED FOR BUILDING PERMIT	2013.06.10			
2	ISSUED FOR ME TENDER	2013.09.03			
3	ISSUED FOR POST TENDER ADDENDUM No. 001	2014.05.23			
4	ISSUED FOR PRELIMINARY COMMENTS	2014.07.20			
5	ISSUED FOR BELOW GRADE CONSTRUCTION	2014.10.16			
6	ISSUED FOR CR ANNOT	2014.10.16			
7	ISSUED FOR COORDINATION	2014.12.30			
8	ISSUED FOR CR MODIFR	2015.02.08			
9	ISSUED FOR S.I. MOODS	2015.05.05			
10	ISSUED FOR S.I. MOODS	2015.06.05			
11	ISSUED FOR S.I. MOODS	2015.07.20			
12	ISSUED FOR S.I. MOODS	2015.12.04			
13	ISSUED FOR S.I. MOODS	2016.01.29			
14	ISSUED FOR S.I. MOODS	2016.07.20			
15	ISSUED FOR S.I. MOODS	2016.04.06			
16	ISSUED FOR S.I. MOODS	2016.04.20			
17	ISSUED FOR S.I. MOODS	2016.12.15			
18	ISSUED FOR S.I. MOODS	2017.04.10			

WALLMAN ARCHITECTS
 30 Duncan Street, Suite 202
 Toronto, Ontario M5V 2C3
 T 416 340 1870
 F 416 340 1871
 info@wallmanarchitects.com

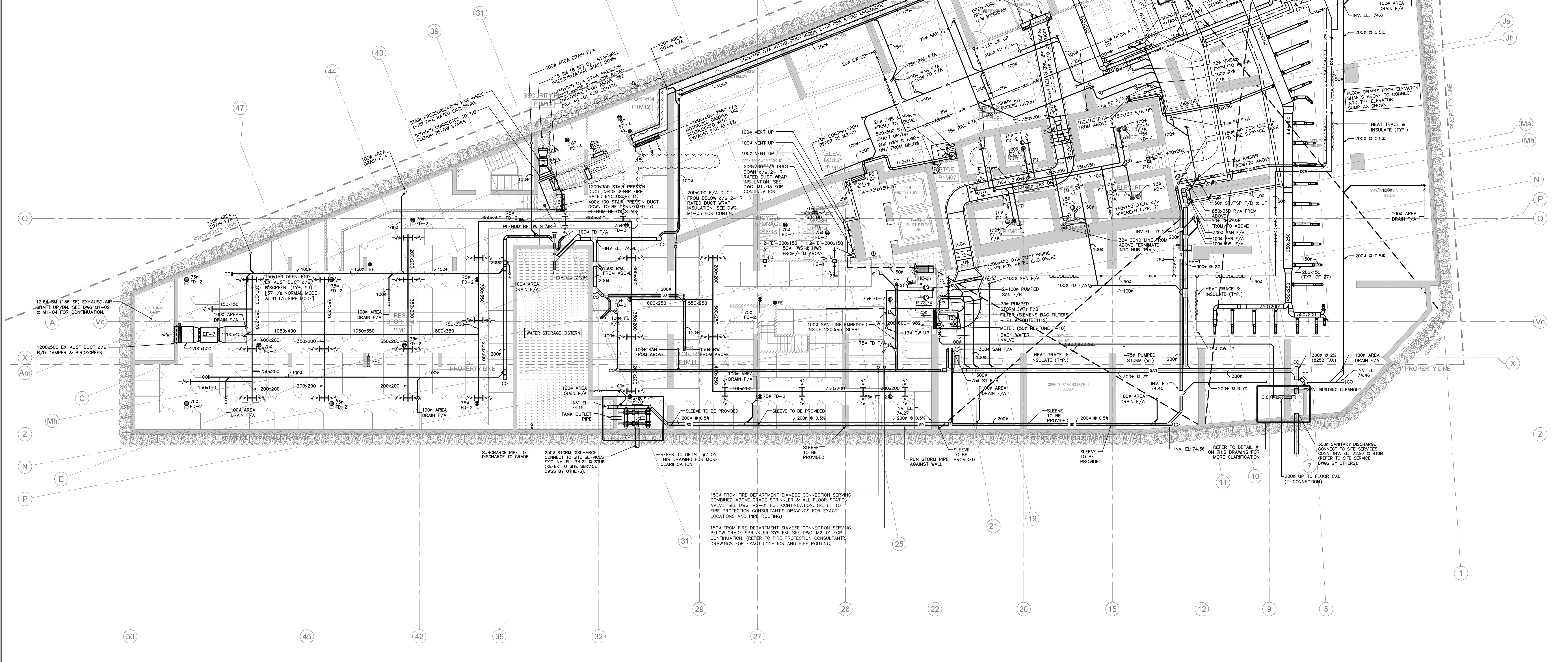
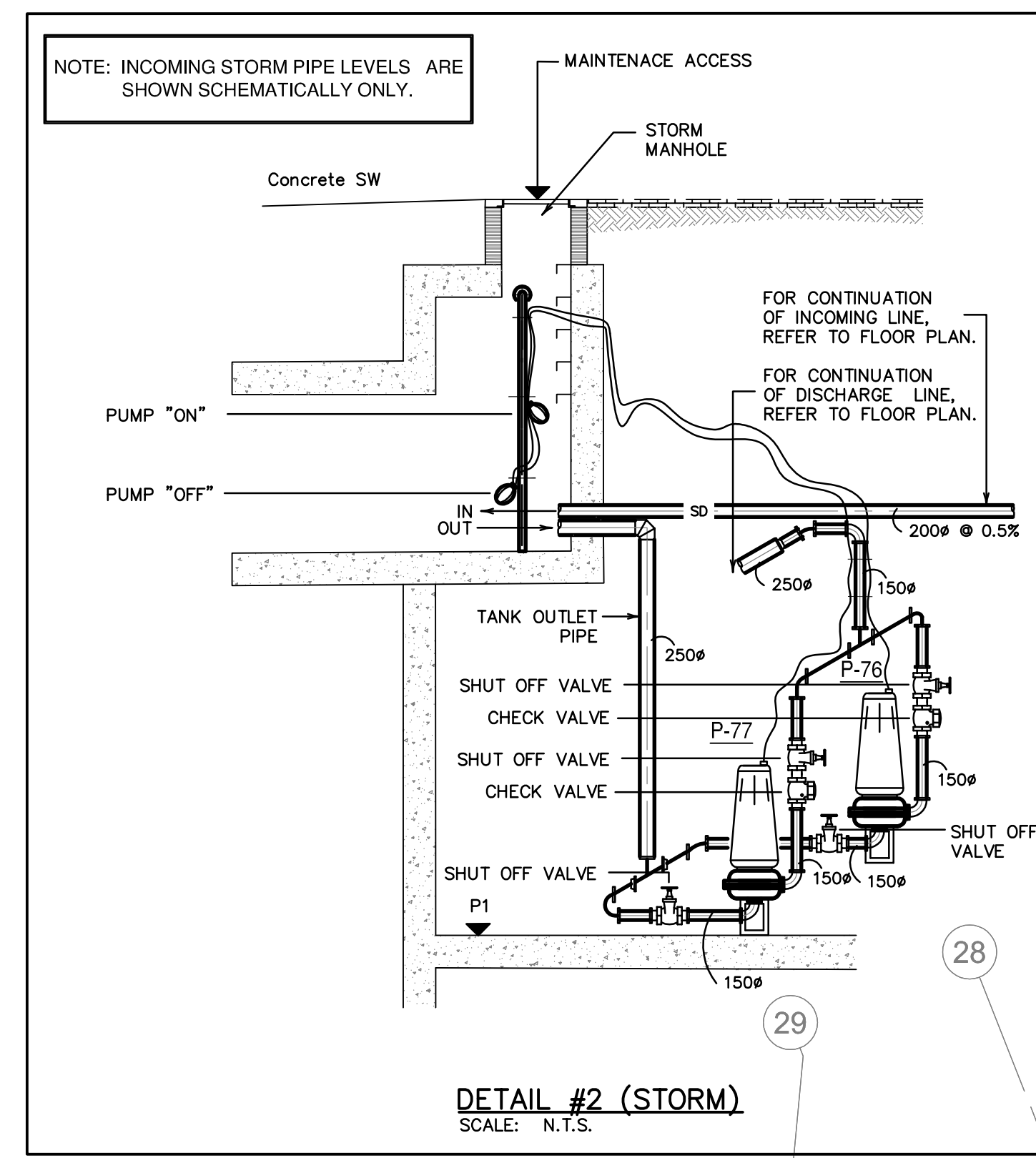
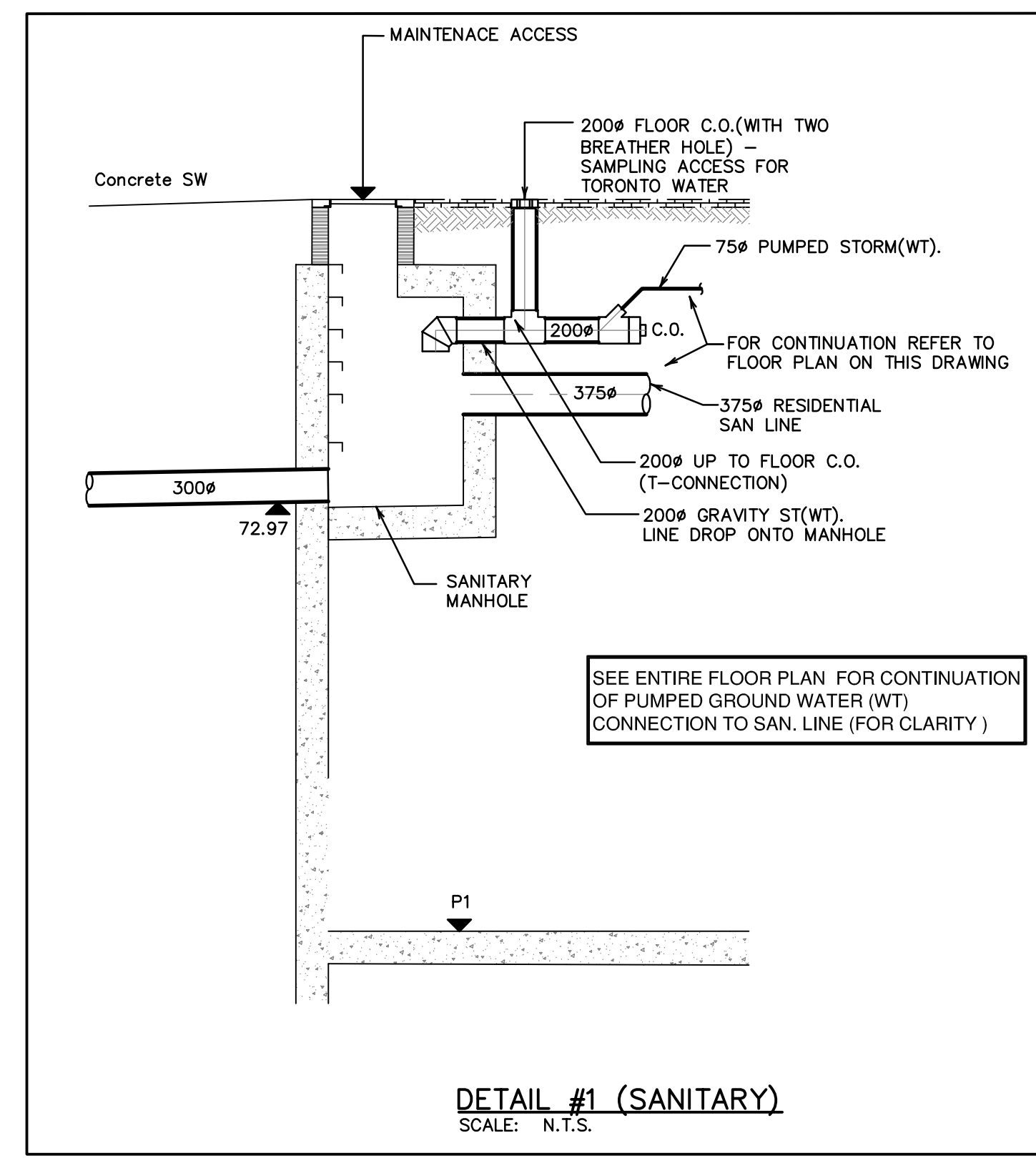
TENYORK
 RISING ABOVE IT ALL
 10 YORK STREET
 TORONTO, ONTARIO
TRIDEL
 4800 DUFFERIN STREET, TORONTO, ONTARIO, M3H 5S9
 1416.987.3344 1416.987.5588

**CONSTRUCTION FLOOR P1
 MUNICIPAL LEVEL B
 MECHANICAL**

15-14 project number
 March 15, 2013 date
 1:100 scale
 M.B.POLJKA, AIA, P.Eng. drafter
 M1-03 sheet

ISSUANCE

GENERAL INFORMATION



MCW
MCW Consultants Ltd.
 207 Queen's Quay West, Suite 615, Toronto, ON, M5J 1A7
 E-Mail: mcw_tor@mcw.com www.mcw.com
 Tel: 416-598-0200 Fax: 416-598-5004
 Toronto Vancouver Winnipeg Moncton Ottawa Halifax
 Dauphin Kelowna Trail Saint John



No.	Issuance	Date	No.	Issuance	Date
1	ISSUED FOR BUILDING PERMIT	2013.08.10	11	ISSUED FOR S.I. M010	2015.07.20
2	ISSUED FOR ME. TENDER	2013.09.03	12	ISSUED FOR S.I. M011	2015.08.14
3	ISSUED FOR POST TENDER ADDENDUM NO. 001	2014.05.23	13	ISSUED FOR S.I. M015	2016.01.26
4	ISSUED FOR PRELIMINARY COMMENTS	2014.07.20	14	ISSUED FOR S.I. M017	2016.01.26
5	ISSUED FOR BELOW GRADE CONSTRUCTION	2014.10.16	15	ISSUED FOR S.I. M019	2016.04.06
6	ISSUED FOR CR. M001	2014.10.16	16	ISSUED FOR S.I. M020	2016.04.06
7	ISSUED FOR COORDINATION	2014.10.20	17	ISSUED FOR S.I. M024	2016.12.02
8	ISSUED FOR CR. M002	2015.02.08	18	ISSUED FOR S.I. M025	2017.04.10
9	ISSUED FOR S.I. M005	2015.05.05			
10	ISSUED FOR S.I. M006	2015.06.05			

WALLMAN ARCHITECTS
 30 Duncan Street, Suite 202
 Toronto, Ontario M5V 2C3
 T: 416 340 1870
 F: 416 340 1871
 info@wallmanarchitects.com

TENYORK
 RISING ABOVE IT ALL
 10 YORK STREET
 TORONTO, ONTARIO
TRIDEL
 4800 DUFFERIN STREET, TORONTO, ONTARIO, M3H 5S9
 1 416 967 3344 1 416 967 5588
CONSTRUCTION FLOOR P1 MEZZANINE
MUNICIPAL LEVEL A
MECHANICAL

15-14 project number
 March 15, 2013 date
 1:000 scale
 M.B.POLJKA, AIA, P.Eng. drafter
 M1-04 sheet

ISSUANCE

GENERAL INFORMATION

EXHAUST / SUPPLY AIR FAN SCHEDULE

REFERENCE	DESCRIPTION	LOCATION	SERVING	EXHAUST AIR (L/S)	E.S.P. (KPA)	FAN (RPM)	WEIGHT (KG.)	P.W.L. db RE 10"12 WATTS OCTAVE BAND								MANUFACTURER	MODEL	ENERGY REQUIRED (HP)	MOTOR SIZE (KW)	POWER SUPPLY				STARTER		TYPE	CONTROLS		OTHER REQUIREMENTS		REMARKS	NOTES									
								1	2	3	4	5	6	7	8					VOLTS	PHASE	FED FROM	DM	NORM.	SUPPLIED BY		INSTALLED BY	MANUAL	AUTO.	INTERLOCK BY:			DISC. AT MOTOR	W.P. DISC. AT MOTOR	F.A. SHUT	OTHERS					
EF-01	PARKING EXHAUST	P5 PARKING	P5 PARKING	11800	0.08	624	230	-	-	-	-	-	-	-	-	-	GREENHECK	SBS-242-50	3.7	575	3	6E3MA-1,3,5	YES	-	DV 15	DV 15	2SSWR	-	YES	YES	-	YES	-	-	-	-	-	-	-		
EF-02	PARKING EXHAUST	P4 PARKING	P4 PARKING	11800	0.08	624	230	-	-	-	-	-	-	-	-	-	GREENHECK	SBS-242-50	3.7	575	3	6E3MA-7,9,11	YES	-	DV 15	DV 15	2SSWR	-	YES	YES	-	YES	-	-	-	-	-	-	-		
EF-03	PARKING EXHAUST	P3 PARKING	P3 PARKING	11800	0.08	624	230	-	-	-	-	-	-	-	-	-	GREENHECK	SBS-242-50	3.7	575	3	6E3MA-13,15,17	YES	-	DV 15	DV 15	2SSWR	-	YES	YES	-	YES	-	-	-	-	-	-	-	-	
EF-04	PARKING EXHAUST	P2 PARKING	P2 PARKING	11800	0.08	624	230	-	-	-	-	-	-	-	-	-	GREENHECK	SBS-242-50	3.7	575	3	6E3MA-19,21,23	YES	-	DV 15	DV 15	2SSWR	-	YES	YES	-	YES	-	-	-	-	-	-	-	-	-
EF-05	PARKING EXHAUST	P1 PARKING	P1 PARKING	10856	0.08	624	230	-	-	-	-	-	-	-	-	-	GREENHECK	SBS-242-50	3.7	575	3	6E3MA-25,27,29	YES	-	DV 15	DV 15	2SSWR	-	YES	YES	-	YES	-	-	-	-	-	-	-	-	-
EF-06	RES. STG. EXHAUST	P5 RES. STOR	P5 RES. STOR	142	0.06	1300	25	-	-	-	-	-	-	-	-	-	GREENHECK	50-80-G	0.05	115	1	2P1M-6	-	YES	DV 15	DV 15	MEDIA V BELLY	-	YES	YES	-	YES	-	-	-	-	-	-	-	-	
EF-07	BI-CYCLE STG. EXH	P5 BI-CYCLE STG.	P5 BI-CYCLE STG.	142	0.06	1300	25	-	-	-	-	-	-	-	-	-	GREENHECK	50-80-G	0.05	115	1	2P1M-2	-	YES	DV 15	DV 15	MEDIA V BELLY	-	YES	YES	-	YES	-	-	-	-	-	-	-		
EF-08	RES. STG. EXHAUST	P5 RES. STOR	P5 RES. STOR	38	0.05	1300	15	-	-	-	-	-	-	-	-	-	GREENHECK	50-80-G	0.05	115	1	2P1M-2	-	YES	DV 15	DV 15	MEDIA V BELLY	-	YES	YES	-	YES	-	-	-	-	-	-	-		
EF-09	RES. STG. EXHAUST	P5 RES. STOR	P5 RES. STOR	43	0.05	1300	15	-	-	-	-	-	-	-	-	-	GREENHECK	50-80-G	0.05	115	1	2P1M-2	-	YES	DV 15	DV 15	MEDIA V BELLY	-	YES	YES	-	YES	-	-	-	-	-	-	-		
EF-10	RES. STG. EXHAUST	P5 RES. STOR	P5 RES. STOR	19	0.05	1300	15	-	-	-	-	-	-	-	-	-	GREENHECK	50-80-G	0.05	115	1	2P1M-6	-	YES	DV 15	DV 15	MEDIA V BELLY	-	YES	YES	-	YES	-	-	-	-	-	-	-		
EF-11	RES. STG. EXHAUST	P5 RES. STOR	P5 RES. STOR	109	0.05	1600	25	-	-	-	-	-	-	-	-	-	GREENHECK	50-70-VG	0.12	115	1	2P1M-4	-	YES	DV 15	DV 15	MEDIA V BELLY	-	YES	YES	-	YES	-	-	-	-	-	-	-		
EF-12	RES. STG. EXHAUST	P5 RES. STOR	P5 RES. STOR	57	0.05	1300	15	-	-	-	-	-	-	-	-	-	GREENHECK	50-80-G	0.05	115	1	2P1M-4	-	YES	DV 15	DV 15	MEDIA V BELLY	-	YES	YES	-	YES	-	-	-	-	-	-	-		
EF-13	RES. STG. EXHAUST	P5 RES. STOR	P5 RES. STOR	48	0.05	1300	15	-	-	-	-	-	-	-	-	-	GREENHECK	50-80-G	0.05	115	1	2P1M-4	-	YES	DV 15	DV 15	MEDIA V BELLY	-	YES	YES	-	YES	-	-	-	-	-	-	-		
EF-14	RES. STG. EXHAUST	P5 RES. STOR	P5 RES. STOR	38	0.05	1300	16	-	-	-	-	-	-	-	-	-	GREENHECK	50-80-G	0.05	115	1	2P1M-4	-	YES	DV 15	DV 15	MEDIA V BELLY	-	YES	YES	-	YES	-	-	-	-	-	-	-		
EF-15	RES. STG. EXHAUST	P5 RES. STOR	P5 RES. STOR	142	0.07	1300	22	-	-	-	-	-	-	-	-	-	GREENHECK	50-80-G	0.05	115	1	2P1M-2	-	YES	DV 15	DV 15	MEDIA V BELLY	-	YES	YES	-	YES	-	-	-	-	-	-	-		
EF-16	RES. STG. EXHAUST	P4 RES. STOR	P5 RES. STOR	142	0.07	1300	22	-	-	-	-	-	-	-	-	-	GREENHECK	50-80-G	0.05	115	1	2P1M-8	-	YES	DV 15	DV 15	MEDIA V BELLY	-	YES	YES	-	YES	-	-	-	-	-	-	-		
EF-17	BI-CYCLE STG. EXH	P4 BI-CYCLE STG.	P4 BI-CYCLE STG.	142	0.06	1300	22	-	-	-	-	-	-	-	-	-	GREENHECK	50-80-G	0.05	115	1	2P1M-10	-	YES	DV 15	DV 15	MEDIA V BELLY	-	YES	YES	-	YES	-	-	-	-	-	-	-		
EF-18	RES. STG. EXHAUST	P4 RES. STOR	P4 RES. STOR	38	0.05	1300	16	-	-	-	-	-	-	-	-	-	GREENHECK	50-80-G	0.05	115	1	2P1M-10	-	YES	DV 15	DV 15	MEDIA V BELLY	-	YES	YES	-	YES	-	-	-	-	-	-	-		
EF-19	RES. STG. EXHAUST	P4 RES. STOR	P4 RES. STOR	43	0.05	1300	15	-	-	-	-	-	-	-	-	-	GREENHECK	50-80-G	0.05	115	1	2P1M-10	-	YES	DV 15	DV 15	MEDIA V BELLY	-	YES	YES	-	YES	-	-	-	-	-	-	-		
EF-20	RES. STG. EXHAUST	P4 RES. STOR	P4 RES. STOR	19	0.05	1300	16	-	-	-	-	-	-	-	-	-	GREENHECK	50-80-G	0.05	115	1	2P1M-8	-	YES	DV 15	DV 15	MEDIA V BELLY	-	YES	YES	-	YES	-	-	-	-	-	-	-		
EF-21	NOT USED	-	-	-	-	-	-	-	-	-	-	-	-	-	-	-	-	-	-	-	-	-	-	-	-	-	-	-	-	-	-	-	-	-	-	-	-	-			
EF-22	RES. STG. EXHAUST	P4 RES. STOR	P4 RES. STOR	48	0.05	1300	15	-	-	-	-	-	-	-	-	-	GREENHECK	50-80-G	0.05	115	1	2P1M-12	-	YES	DV 15	DV 15	MEDIA V BELLY	-	YES	YES	-	YES	-	-	-	-	-	-	-	-	
EF-23	RES. STG. EXHAUST	P4 RES. STOR	P4 RES. STOR	38	0.05	1300	16	-	-	-	-	-	-	-	-	-	GREENHECK	50-80-G	0.05	115	1	2P1M-12	-	YES	DV 15	DV 15	MEDIA V BELLY	-	YES	YES	-	YES	-	-	-	-	-	-	-	-	
EF-24	RES. STG. EXHAUST	P3 RES. STOR	P3 RES. STOR	142	0.07	1300	22	-	-	-	-	-	-	-	-	-	GREENHECK	50-80-G	0.05	115	1	2P1M-14	-	YES	DV 15	DV 15	MEDIA V BELLY	-	YES	YES	-	YES	-	-	-	-	-	-	-	-	
EF-25	BI-CYCLE STG. EXH	P3 BI-CYCLE STG.	P3 BI-CYCLE STG.	142	0.06	1300	22	-	-	-	-	-	-	-	-	-	GREENHECK	50-80-G	0.05	115	1	2P1M-16	-	YES	DV 15	DV 15	MEDIA V BELLY	-	YES	YES	-	YES	-	-	-	-	-	-	-	-	
EF-26	RES. STG. EXHAUST	P3 RES. STOR	P3 RES. STOR	38	0.05	1300	16	-	-	-	-	-	-	-	-	-	GREENHECK	50-80-G	0.05	115	1	2P1M-16	-	YES	DV 15	DV 15	MEDIA V BELLY	-	YES	YES	-	YES	-	-	-	-	-	-	-	-	
EF-27	RES. STG. EXHAUST	P3 RES. STOR	P3 RES. STOR	43	0.05	1300	15	-	-	-	-	-	-	-	-	-	GREENHECK	50-80-G	0.05	115	1	2P1M-16	-	YES	DV 15	DV 15	MEDIA V BELLY	-	YES	YES	-	YES	-	-	-	-	-	-	-	-	
EF-28	RES. STG. EXHAUST	P3 RES. STOR	P3 RES. STOR	19	0.05	1300	16	-	-	-	-	-	-	-	-	-	GREENHECK	50-80-G	0.05	115	1	2P1M-14	-	YES	DV 15	DV 15	MEDIA V BELLY	-	YES	YES	-	YES	-	-	-	-	-	-	-	-	
EF-29	NOT USED	-	-	-	-	-	-	-	-	-	-	-	-	-	-	-	-	-	-	-	-	-	-	-	-	-	-	-	-	-	-	-	-	-	-	-	-				
EF-30	RES. STG. EXHAUST	P3 RES. STOR	P3 RES. STOR	48	0.05	1300	15	-	-	-	-	-	-	-	-	-	GREENHECK	50-80-G	0.05	115	1	2P1M-18	-	YES	DV 15	DV 15	MEDIA V BELLY	-	YES	YES	-	YES	-	-	-	-	-	-	-	-	
EF-31	RES. STG. EXHAUST	P3 RES. STOR	P3 RES. STOR	38	0.05	1300	16	-	-	-	-	-	-	-	-	-	GREENHECK	50-80-G	0.05	115	1	2P1M-18	-	YES	DV 15	DV 15	MEDIA V BELLY	-	YES	YES	-	YES	-	-	-	-	-	-	-	-	
EF-32	RES. STG. EXHAUST	P2 RES. STOR	P2 RES. STOR	142	0.07	1300	22	-	-	-	-	-	-	-	-	-	GREENHECK	50-80-G	0.05	115	1	2P1M-20	-	YES	DV 15	DV 15	MEDIA V BELLY	-	YES	YES	-	YES	-	-	-	-	-	-	-	-	
EF-33	FIRE PROT. RM EXH	P2 FIRE PROT. RM	P2 FIRE PROT. RM	284	0.06	1300	25	-	-	-	-	-	-	-	-	-	GREENHECK	50-80-G	0.06	115	1	2P1M-22	-	YES	DV 15	DV 15	MEDIA V BELLY	-	YES	YES	-	YES	-	-	-	-	-	-	-	-	
EF-34	RES. STG. EXHAUST	P2 RES. STOR	P2 RES. STOR	38	0.05	1300	16	-	-	-	-	-	-	-	-	-	GREENHECK	50-80-G	0.05	115	1	2P1M-22	-	YES	DV 15	DV 15	MEDIA V BELLY	-	YES	YES	-	YES	-	-	-	-	-	-	-	-	
EF-35	RES. STG. EXHAUST	P2 RES. STOR	P2 RES. STOR	43	0.05	1300	15	-	-	-	-	-	-	-	-	-	GREENHECK	50-80-G	0.05	115	1	2P1M-22	-	YES	DV 15	DV 15	MEDIA V BELLY	-	YES	YES	-	YES	-	-	-	-	-	-	-	-	
EF-36	RES. STG. EXHAUST	P2 RES. STOR	P2 RES. STOR	19	0.05	1300	16	-	-	-	-	-	-	-	-	-	GREENHECK	50-80-G	0.05	115	1	2P1M-20	-	YES	DV 15	DV 15	MEDIA V BELLY	-	YES	YES	-	YES	-	-	-	-	-	-	-	-	
EF-37	NOT USED	-	-	-	-	-	-	-	-	-	-	-	-	-	-	-	-	-	-	-	-	-	-	-	-	-	-	-	-	-	-	-	-	-	-	-	-				
EF-38	RES. STG. EXHAUST	P2 RES. STOR	P2 RES. STOR	48	0.05	1300	15	-	-</																																

